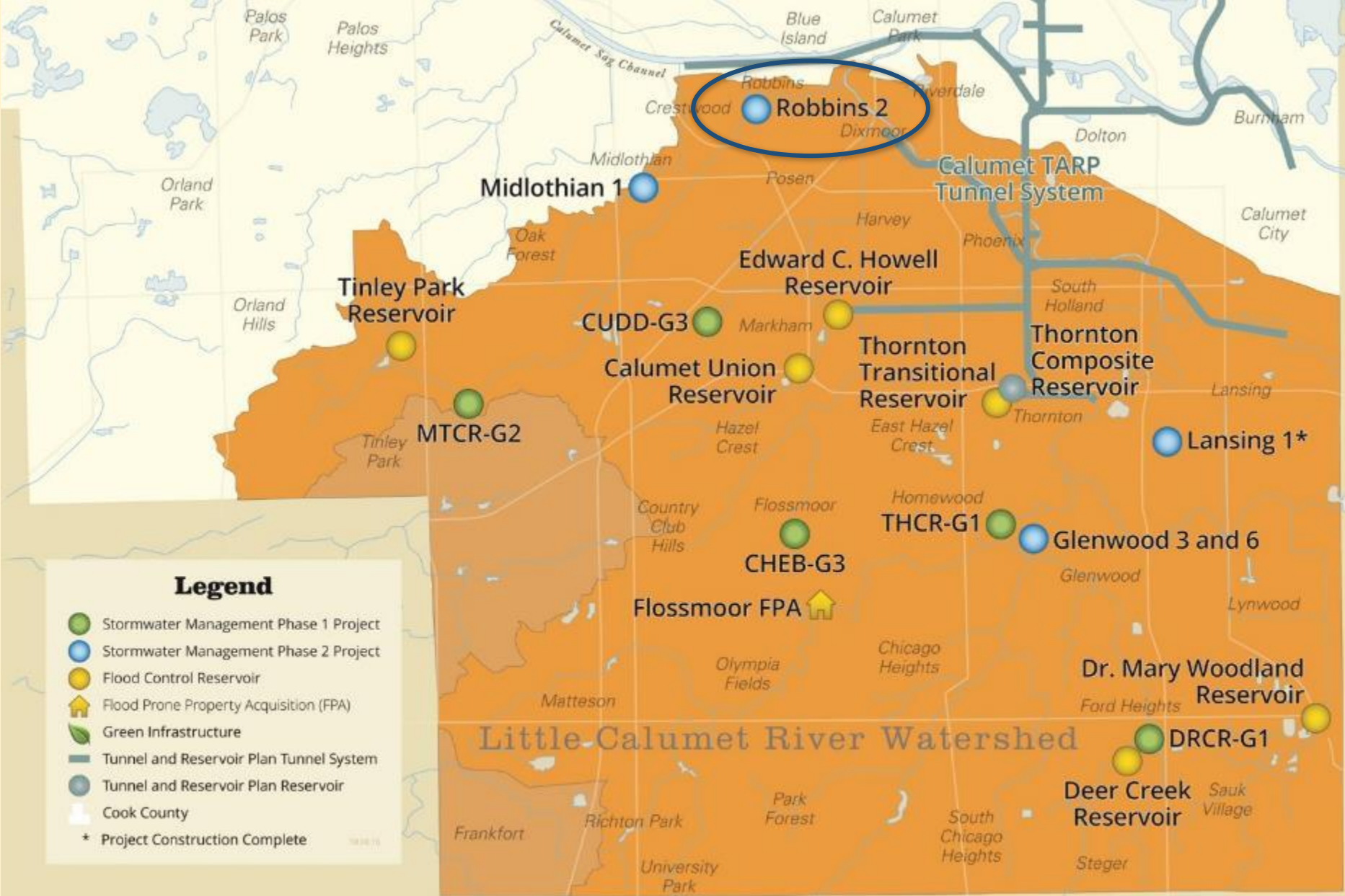


Village of Robbins Stormwater Park Project

October 5, 2018

Metropolitan Water Reclamation District of Greater Chicago
Calumet Stormwater Collaborative

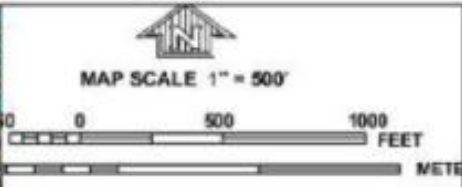
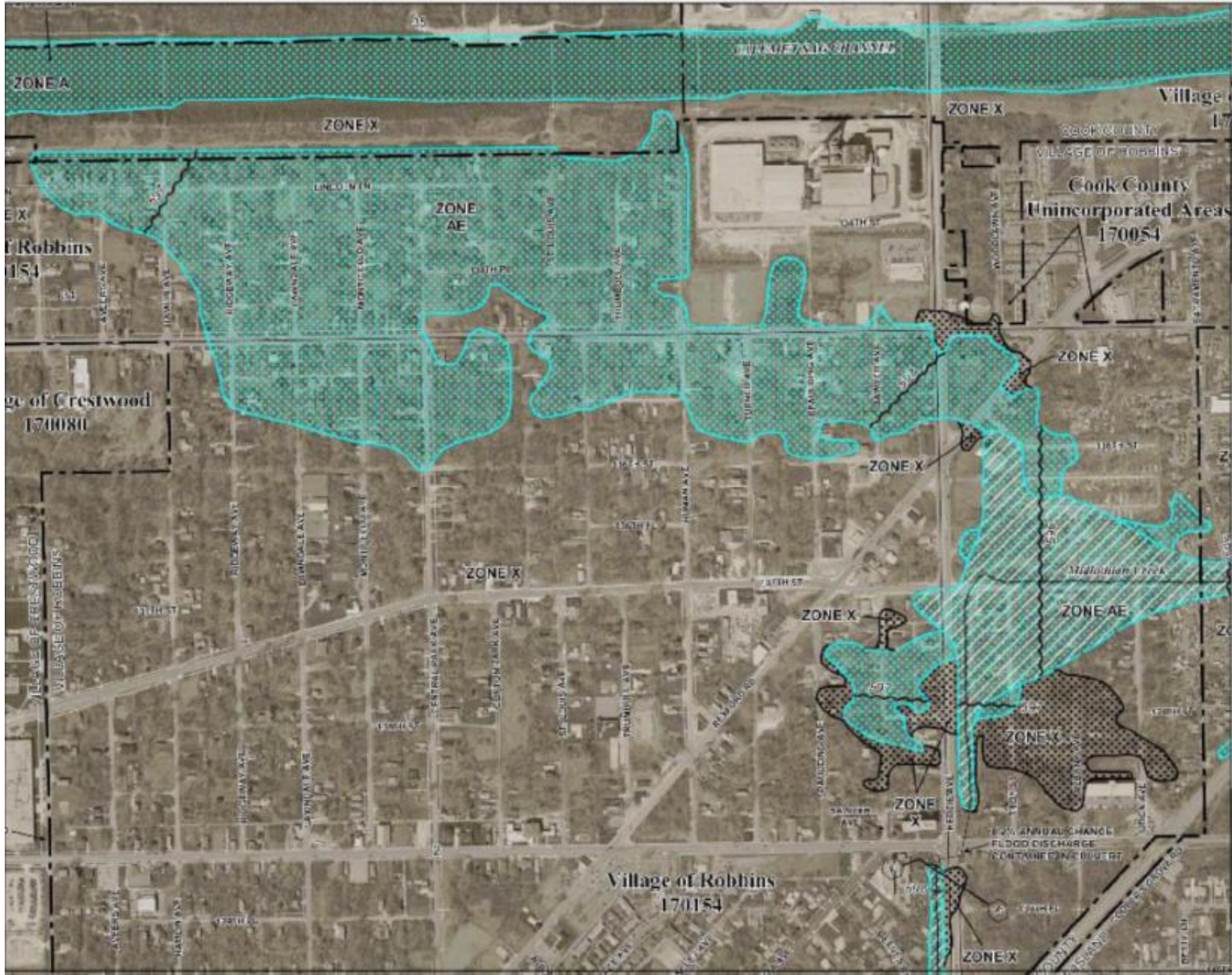
Richard Fisher



Metropolitan Water Reclamation District of Greater Chicago
Stormwater Management, Green Infrastructure, Tunnel and Reservoir Plan and Flood Control Projects and Facilities

📱 mwrtd.org





NFP

NATIONAL FLOOD INSURANCE PROGRAM

PANEL 0639J

FIRM
FLOOD INSURANCE RATE MAP
COOK COUNTY,
ILLINOIS
AND INCORPORATED AREAS

PANEL 639 OF 832
 (SEE MAP INDEX FOR FIRM PANEL LAYOUT)

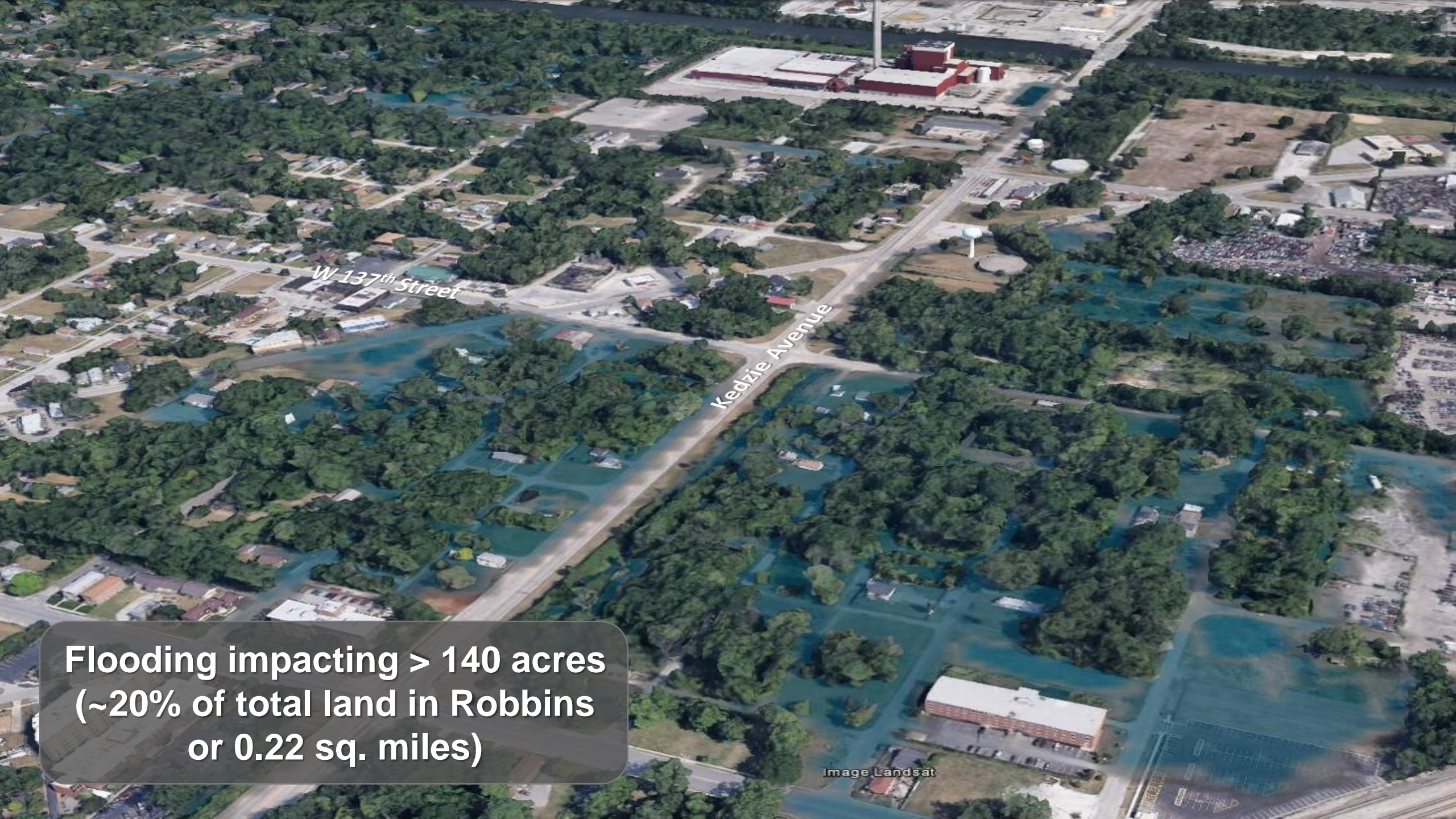
COUNTY	RATE	THRU	DATE
ALTON	1.00	300	-
ARMONK	1.00	300	-
COOK COUNTY	1.00	300	-
CREMORA	1.00	300	-
MASSMAN	1.00	300	-
POPLARVILLE	1.00	300	-
ROCKFORD	1.00	300	-

MAP NUMBER
17031C0639J

MAP REVISED
AUGUST 10, 2008

Federal Emergency Management Agency

This is an official copy of a portion of the above referenced flood map. It was extracted using FIRM Online. The map does not reflect changes or amendments which may have been made subsequent to the date on the title block. For the latest product information about National Flood Insurance Program Base maps check the FEMA Flood Map Store at www.fema.gov.

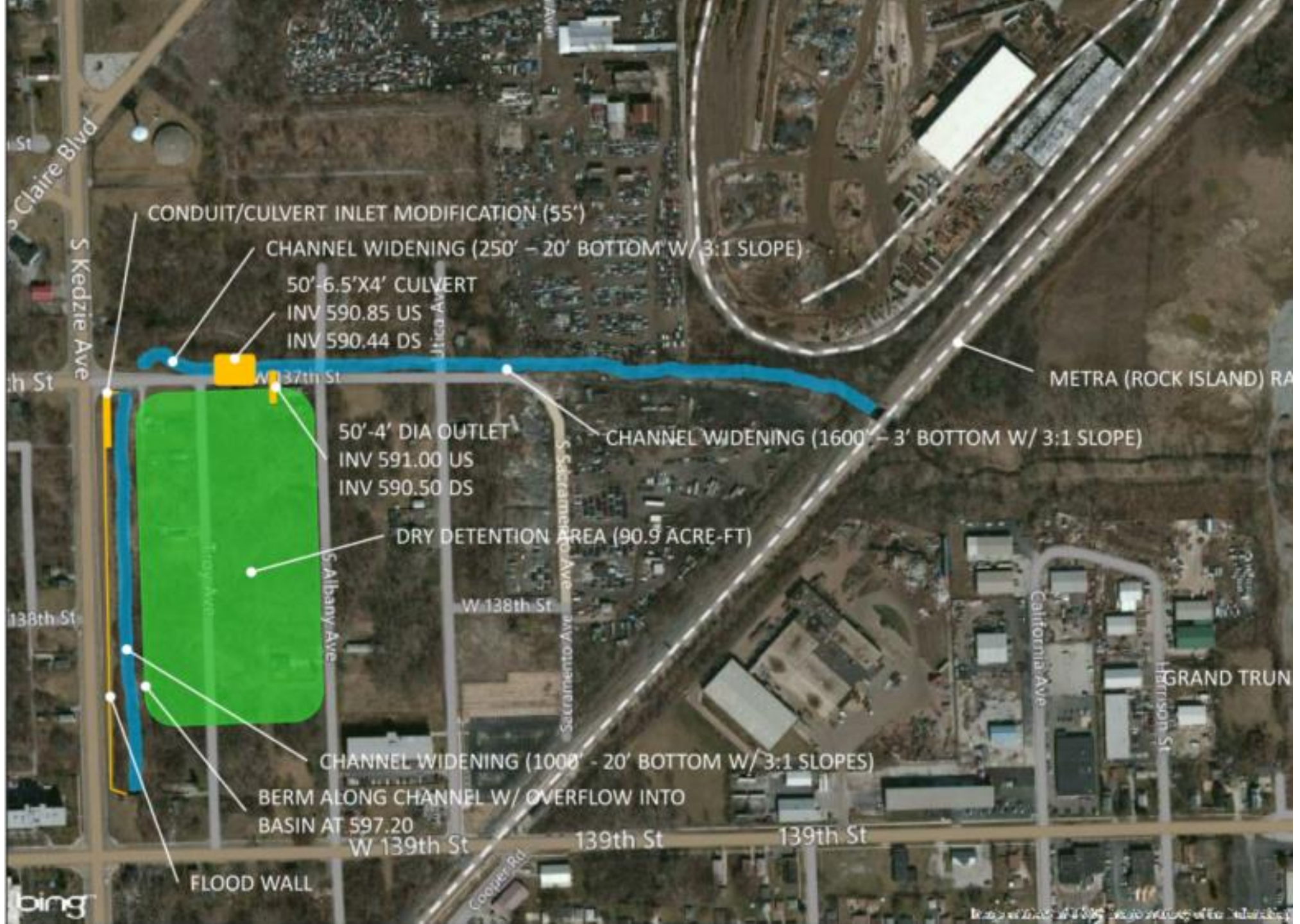


W 137th Street

Kedzie Avenue

**Flooding impacting > 140 acres
(~20% of total land in Robbins
or 0.22 sq. miles)**

Image Landsat





KEDZIE AVENUE

EXISTING 84 IN DIA BYPASS CONDUIT

48 IN DIA OUTLET CONDUIT
INV 588.00 US
INV 587.50 DS

137TH STREET

8.84 ACRE-FT DETENTION BASIN

50 FT INLET WEIR STRUCTURE

CHANNEL WIDENING – 20 FT BOTTOM WIDTH (3:1 SIDE SLOPE
RE-GRADING ALONG EASTERN SLOPE

50 FT INLET WEIR STRUCTURE

150 FT – 7'x5' BOX CULVERT

BERM ALONG CHANNEL W/ OVERFLOW AT EL 597.20

FLOOD WALL

139TH STREET



METRA (ROCK ISLAND) RAIL LINE

Challenges of the Previous Work

- Engineered solutions focused only on stormwater management
 - Effective, but high cost (\$6M)
 - Provided 25-year level of protection
 - Solution impacted at least some homes
 - Plans for future development incomplete and not integrated with stormwater alternatives
 - No added benefits beyond flood control



Continuous Flooding



Lack of investment & services



Vacant land



Lack of sports fields



Lack of major open spaces



Poor relationship to transit

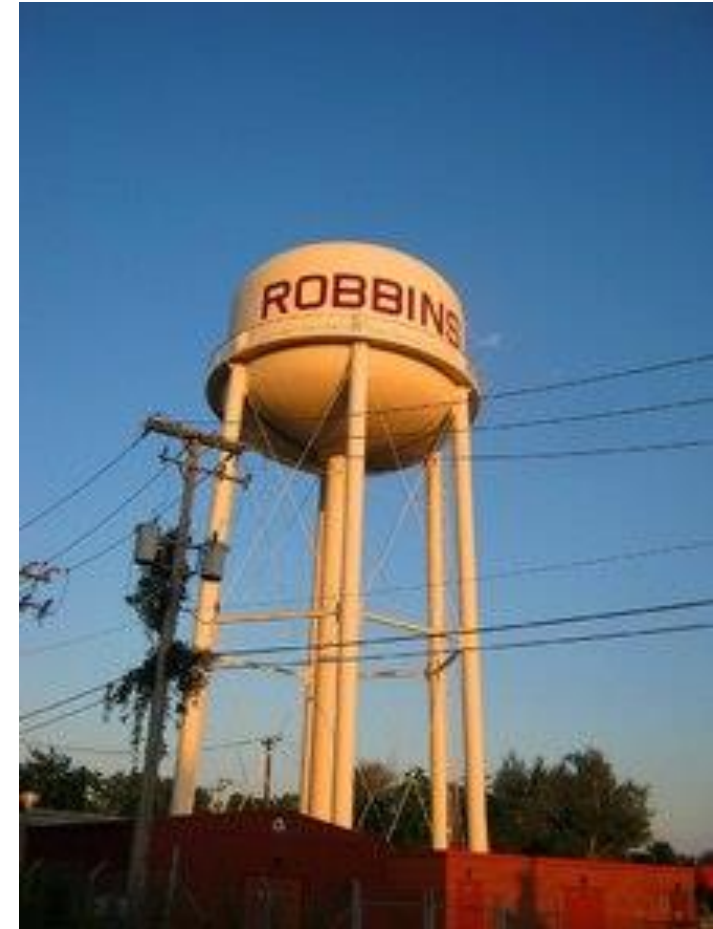
Opportunities

“Let’s design a flood control solution that will maximize local assets and spur economic development.”



Vision Plan for Robbins

- MWRD would like to assist in implementing a local plan
- Maximize local assets
 - People
 - History
 - Transportation
 - Proximity to industry, city
- Guided by and partnered with the Village



Job creation



Potential for transit-oriented development



Creation of recreational spaces



Connections to the regional resources



Community Engagement

Public meetings and workshops

1. No Relocation of Residents
2. Solve the Flooding
3. Respect and engage the historic legacy of Robbins
4. Attract new residents
5. Facilitate development of affordable housing and retail
6. Inspire job creation
7. Create space for youth sports and seniors
8. Engage nature through learning, fishing, walking, & rowing
9. Establish a strategy for maintenance and maximizing the value of land around the park

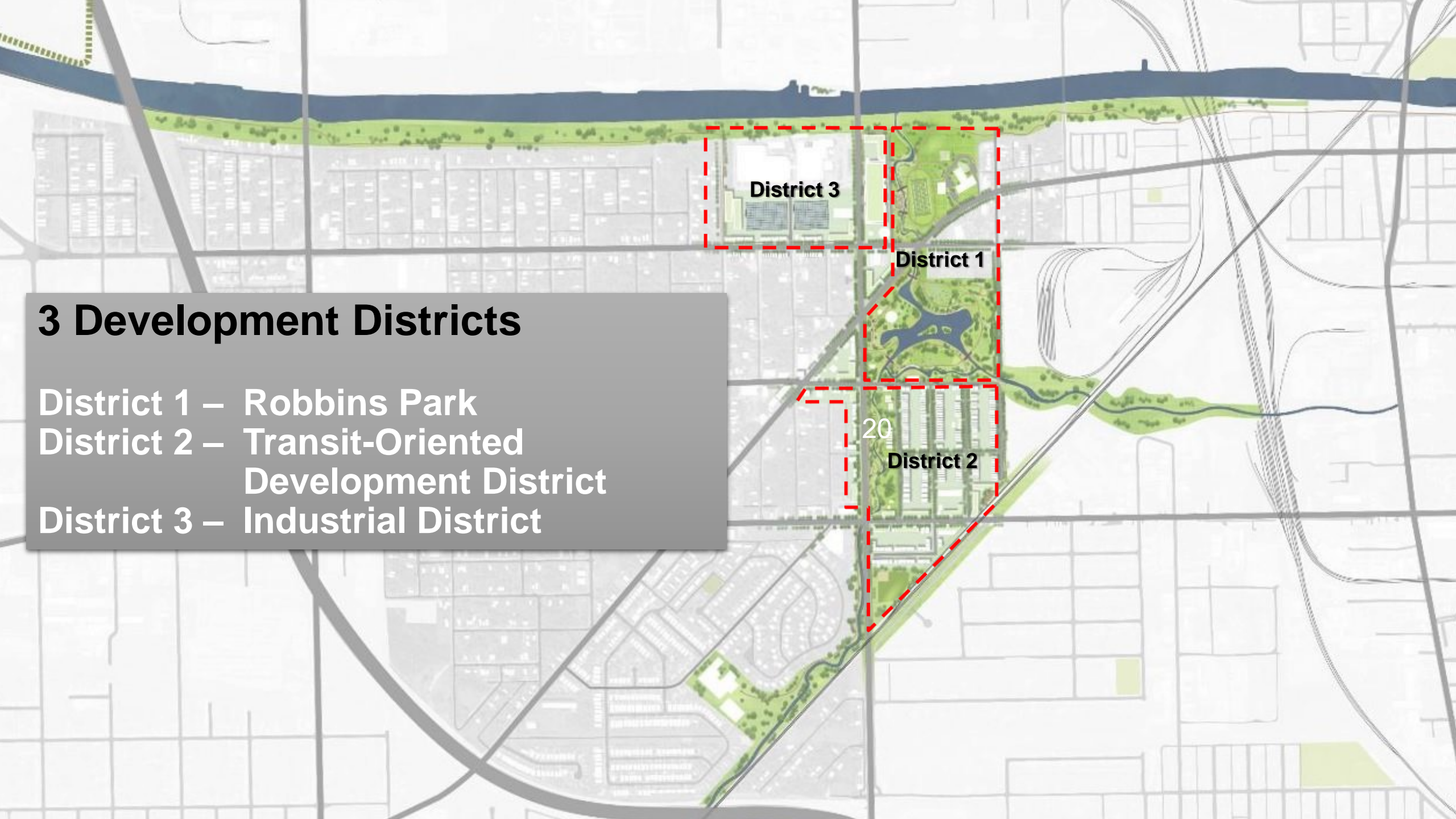


Vision:

A green-blue stormwater solution for Robbins which includes wetlands, lakes, parks and playfields

**District 1 –
Creating Robbins Park**





3 Development Districts

- District 1 – Robbins Park
- District 2 – Transit-Oriented Development District
- District 3 – Industrial District

Technical Experts:

Cook County Department of Transportation and Highways
Regional Transit Authority
Illinois Department of Natural Resources
Chicago Botanic Garden
The Nature Conservancy
South Suburban Mayors & Managers Association

Stewards/Workforce:

U.S. Department of Defense / Innovative Readiness Training Program
Morton Arboretum
Chicago Botanic Garden
OAI, Inc.
Illinois Department of Natural Resources
-Millennium Reserve

Funders/Influencers:

Cook County
U.S. Department of Housing and Urban Development
Illinois Housing Development Authority

Land Holders:

South Suburban Land Bank and Development Authority
Cook County Land Bank Authority
Housing Authority of Cook County
OpenLands

Illinois Department of Natural Resources

The Nature Conservancy
South Suburban Mayors & Managers Association
Metropolitan Planning Council

Core Group for Infrastructure and Pre-Development Leadership:

Village of Robbins
Metropolitan Water Reclamation District Cook County
South Suburban Land Bank and Development Authority
Metra

Other Interested Partners:

Illinois Environmental Protection Agency
Forest Preserve District of Cook County
Chicagoland Metropolitan Agency for Planning
Argonne National Lab
Illinois Association of Park Districts

Potential Private Partners:

UIC's Voorhees Center
Impact Engine
MacArthur Foundation
Grand Victoria Foundation
Chicago Community Trust
Rural Studio
Corvias
Owner of Robbins Power Center
Miller Canfield

Stakeholder Engagement