

TOD and Industrial Plan





History



- One of the first African-American municipalities incorporated for African-Americans migrating from the South in 1917
- Built without traditional planning layout.
 - Many streets were unpaved
 - Rural look and feel
- First African-American owned airport





Demographics

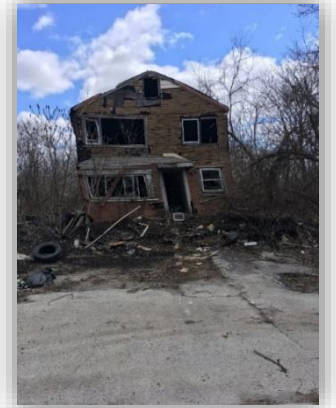


- Pop. Approx. 5200
- 95% African-American
- Median Age = 39
- Median Income = \$24,000
- Increasing Latino population



Neighborhood Character

- Underutilized lots and limited retail options
- Limited developable land due to flooding
- Potential for infrastructure improvements
- Surrounding South Suburbs



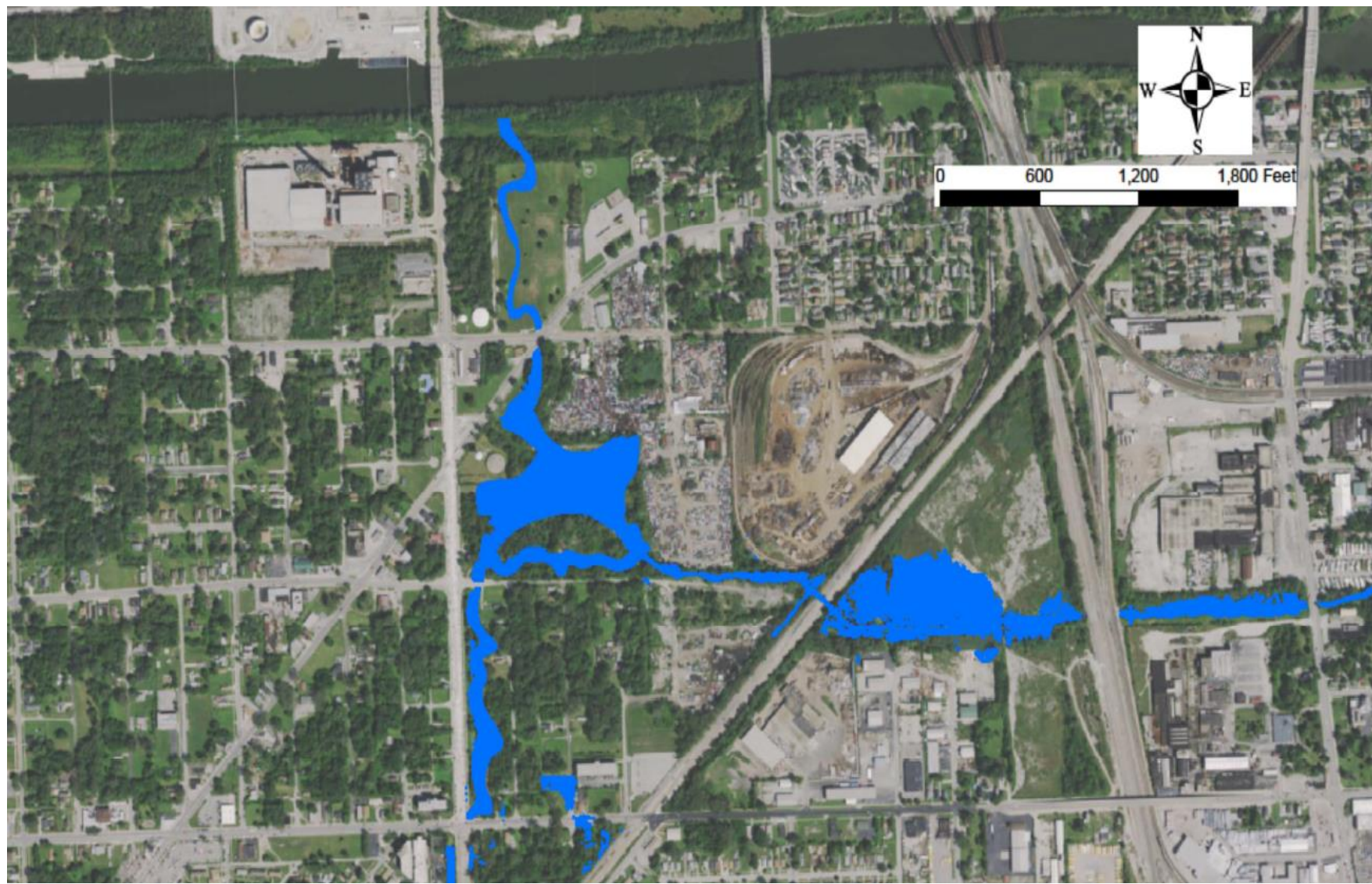


Flooding (Pre-Robbins Park)



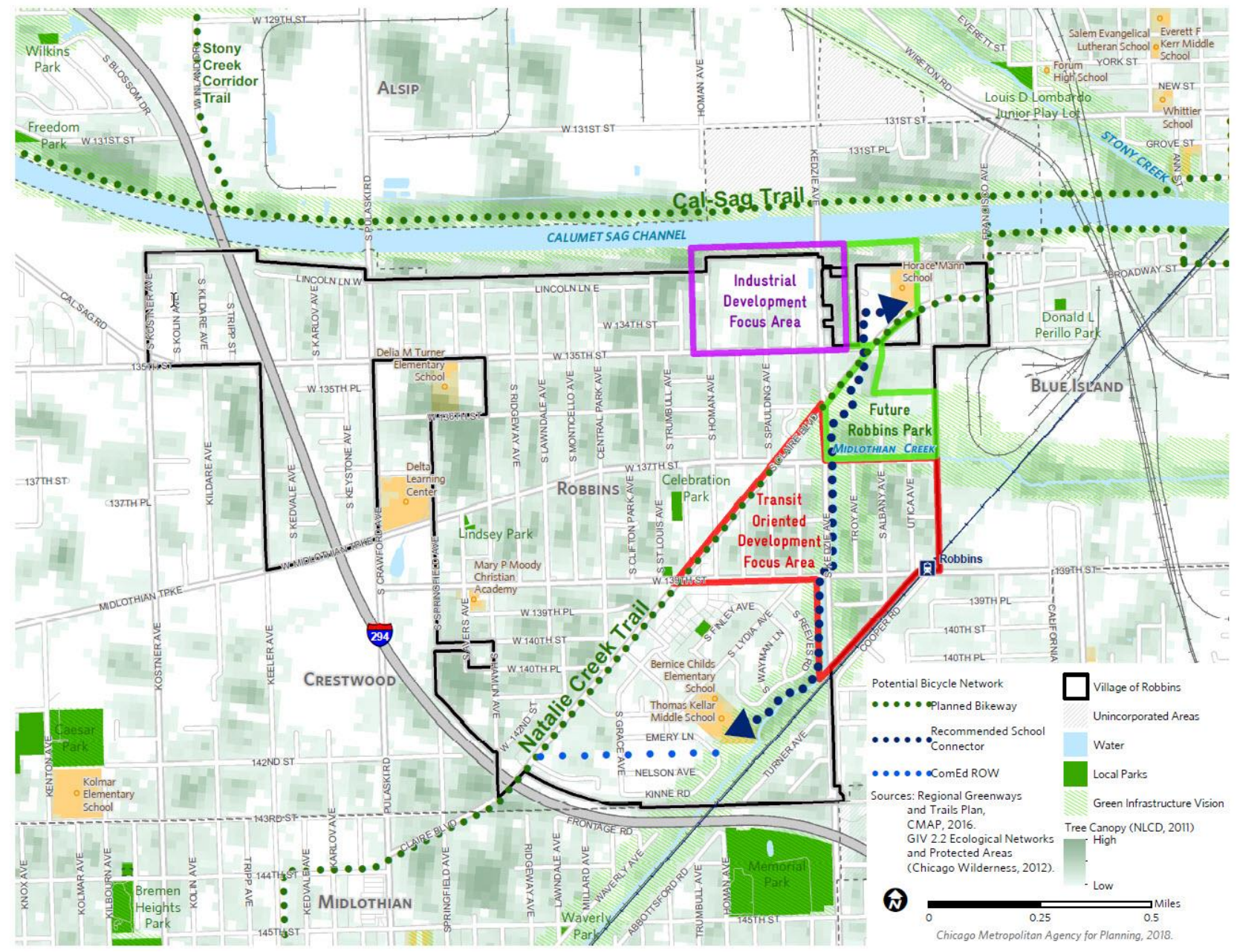


Flooding (Post Robbins Park)





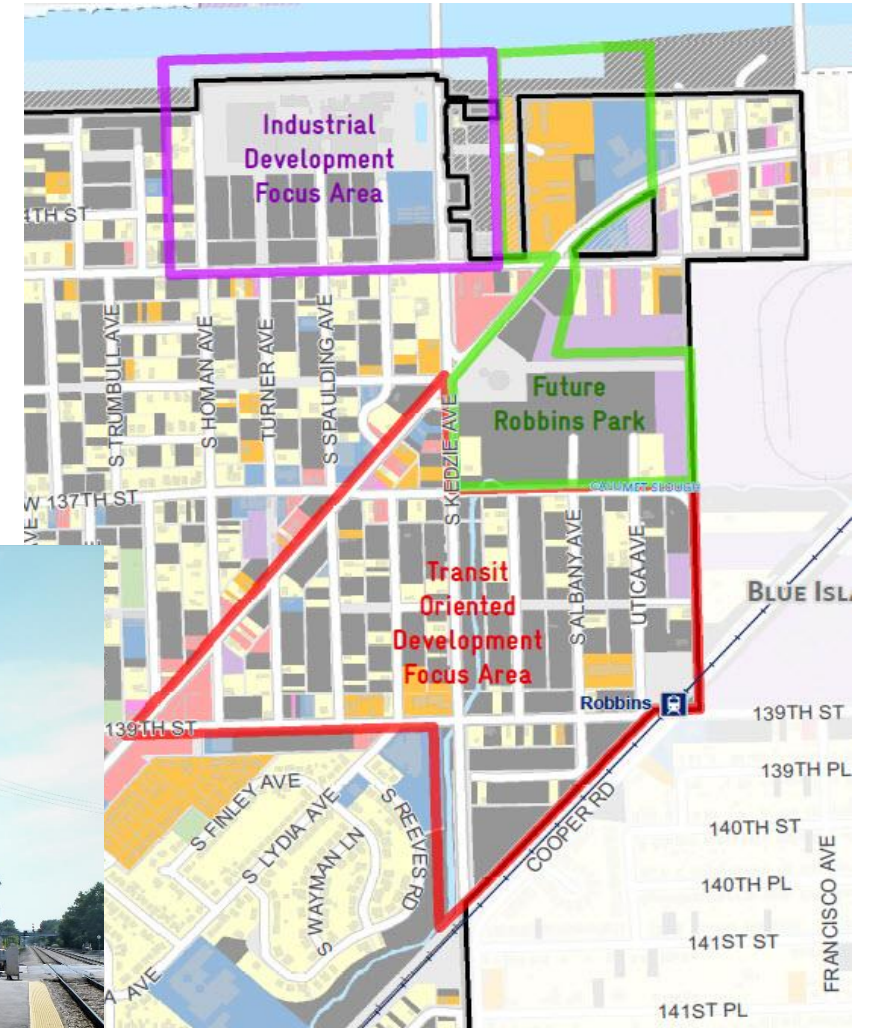
Regional Trails





Transit Oriented Development

- Robbins Metra Station (Rock Island)
 - Rebuilt in 2008
 - ~90 weekday riders
 - ~60% of station area is vacant
- Previous RTA study completed in 2002
- CMAP, RTA & consultant collaboration
- Scope of Work
 - Review existing conditions
 - Interview stakeholders
 - Analyze market for housing and economic development
 - Improve pedestrian and bicycle access to transit





Industrial Development

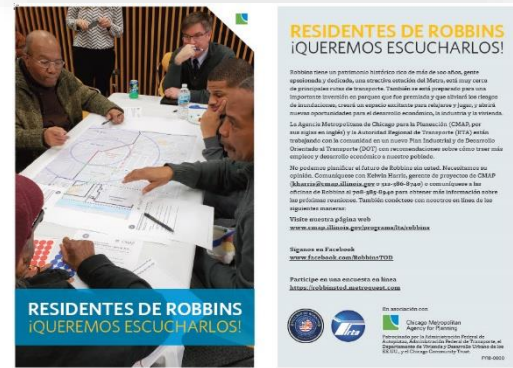
- Site was waste-to-energy Resource Recovery Facility in 1997
 - Closed in 2000
- Anaerobic Digestion proposal to produce and sell methane gas





Community Outreach

- Kick Off meeting - April 16th
- Outreach Methods
 - Website & Facebook
 - Online Survey & Kiosk
 - Bi-lingual Postcards (also Spanish)
 - Cable access channel
 - Festivals and Events
- Steering Committee
- Key-person interviews underway





Thank You