

# CSC 3-YEAR WORKPLAN YEAR-2 UPDATE

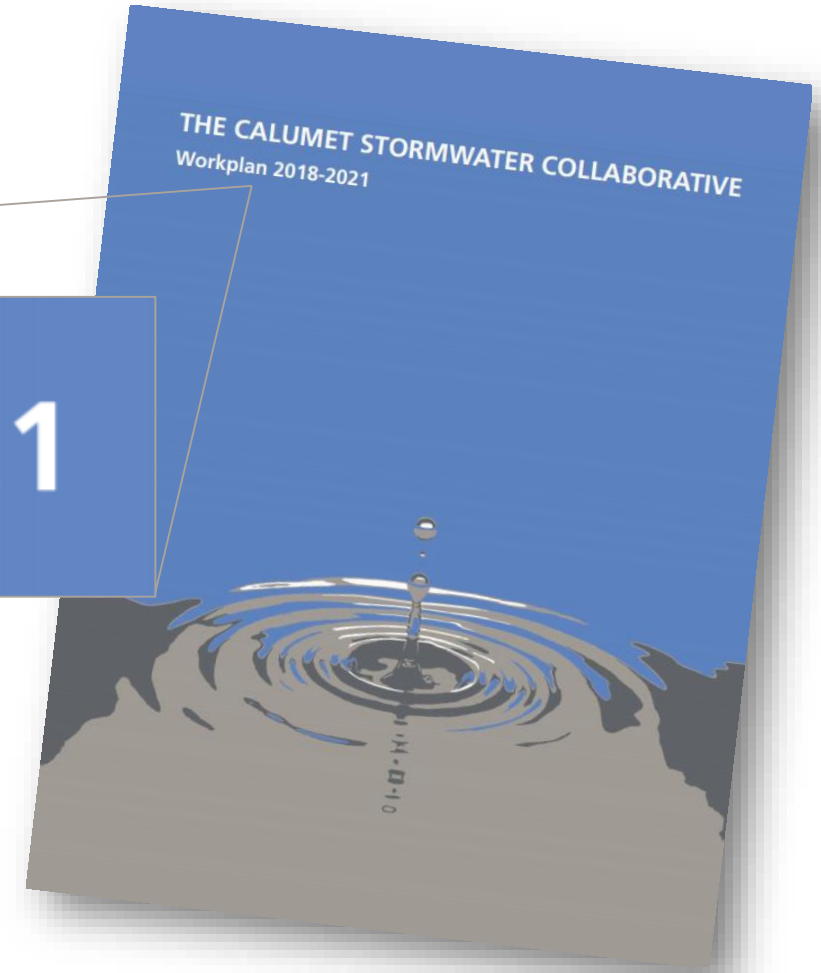
# CSC 3-year Workplan

- Launched Oct. 5, 2018

Workplan 2018-2021

- How are we doing?

[metroplanning.org/calumet](http://metroplanning.org/calumet)



# Fundamental Goals

Significant reduction in non-overbank flooding

Grey and green infrastructure maintains its designed performance over time

Increase municipal capacity and reduce fragmentation across Calumet government actors

Data-driven decision-making is more prevalent in stormwater management planning

# Multi-year, phased approach

## PHASE 1: Foundational Activities

- Developing baselines and trainings
- Measuring near-term successes
- Refinement

## PHASE 2: Prioritized Strategies & Capacity Building

- Utilizing outputs from Phase 1
- Strategic direction of future activities
- Refinement

## PHASE 3: Targeted Implementation

- Advancing targeted activities
- Measuring long-term successes
- Refinement

# Phase 1: Foundational Activities

## ACTIVITY 1

- Establish a baseline of existing green infrastructure

## ACTIVITY 2

- Establish a baseline of non-overbank flooding

## ACTIVITY 3

- Develop and begin to execute systems to provide relevant training and strengthen management systems to bolster green infrastructure implementation and maintenance

## ACTIVITY 4

- Establish a baseline of municipal capacity in stormwater management

CSC Foundational Activity #1

# ESTABLISH A BASELINE OF EXISTING GREEN INFRASTRUCTURE



# THE GIBI

PHASE 2 IN 2020 (!)

*CSC Workgroup update*

# WHAT IS A GIBI?

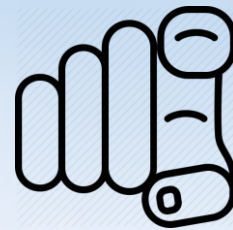
(Wrong answers only)



~~Green Infrastructure Baseline Inventory~~



Grinch Is Back In 2020



Other wrong answer  
(type in chat)



Ginger Bread Icing



A detailed landscape design sketch on a white sheet of paper. The sketch features numerous green circular shapes of varying sizes, representing trees or shrubs, arranged in clusters and along paths. A winding path is visible, leading towards a building footprint on the right side of the page. Several colored pencils are scattered across the top left of the sketch. The pencils include a yellow one, a green one, a purple one, and a dark blue one. The overall scene is a close-up of a professional or student's design process.

**Phase 2**

**Let's build it!**

**Phase 1**

**Needs and feasibility assessment**

# Metropolitan Planning Council



**Proposal scoped, grant awarded**

**Convene  
Data  
Providers**

**Collect  
Existing Data**

**Contact  
Calumet region  
engineering  
firms**

**Build the  
dataset**

**Conduct  
direct  
outreach**

**Convene  
Data  
Providers**

**Collect  
Existing Data**

**Contact  
Calumet region  
engineering  
firms**

**Build the  
dataset**

**Conduct  
direct  
outreach**

# Advisory Committee Meeting October 2020

**Goal: Streamline the data collection process**



We deep dove into the GIBI spreadsheet!

	A	B	C	D	E	F	G	H	I	J	K	L
	No.	Marketing Budget	Categories	Unit	Dec-15	Jan-16	Feb-16	Mar-16	Apr-16	May-16	Jun-16	Jul-16
1					12,034	13,565	10,674	13,095	18,392	12,357	20,775	24,768
2	10460	Benefits	1-Personal	0	345	347	154	1,953	374	534	764	133
3	35246	Payroll taxes	1-Personal	0	521	434	178	519	1,850	543	248	346
4	76745	Salaries	1-Personal	0	0	2,300	189	90	23	456	25,326	25,599
5	76023	Commissions and bonuses	1-Personal	1	12,900	16,646	11,195	15,657	18,639	13,890	1,266	4,800
6	23674	Personnel Total	1-Personal	1	6,000	2,300	5,000	1,500	1,200	1,266	1,500	4,800
7	14678	Web Research	2-Marketing	2	2,000	5,420	3,000	2,100	900	590	4,252	3,674
8	10567	Independent Research	2-Marketing	0	8,200	4,900	2,000	8,000	10,100	5,312	10,252	15,074
9	96843	Firm Research Fees	2-Marketing	3	16,200	12,620	10,000	14,800	10,100	134	357	2,466
10	17695	Market Research Total	2-Marketing	2	1,239	190	1,245	432	134	612	453	355
11	94015	Promotions	3-Commu	2	522	431	573	323	234	13,555	24,890	45,780
12	75321	Branding	3-Commu	1	10,432	-	10,430	14,093	12,890	234	425	236
13	95235	Web Advertising	3-Commu	0	-	532	156	1,090	567	34	346	865
14	32564	Direct Marketing	3-Commu	0	-	1,243	12	12	34	15,138	28,812	56,965
15	68508	Newspaper Advertising	3-Commu	4	12,662	19,330	12,416	16,505	13,904	1,367	247	478
16	06342	Communication Total	3-Commu	0	19,300	15,333	15,000	15,890	12,009	1,45	207	109
17	89063	Travel	4-Other	0	200	150	155	200	120	500	100	500
18	07421	Phone	4-Other	0	400	500	100	200	746	462	678	346
19	93012	Computer/Office Equipment	4-Other	2	683	153	356	235	13,375	2,074	1,632	1,703
20	24601	Postage	4-Other	2	20,583	16,136	15,611	16,525	18,392	12,357	20,775	24,768
21	35151	Other Total	4-Other	0	12,034	13,565	10,674	13,095	18,392	12,357	20,775	24,768
22	10460	Benefits	1-Personal	0	345	347	154	1,953	374	534	764	133
23	35246	Payroll taxes	1-Personal	0	521	434	178	519	1,850	543	248	346
24	76745	Salaries	1-Personal	0	0	2,300	189	90	23	456	25,326	25,599
25	76023	Commissions and bonuses	1-Personal	1	12,900	16,646	11,195	15,657	18,639	13,890	1,266	4,800
26	23674	Personnel Total	1-Personal	1	6,000	2,300	5,000	1,500	1,200	1,266	1,500	4,800
27	14678	Web Research	2-Marketing	2	2,000	5,420	3,000	2,100	900	590	4,252	3,674
28	10567	Independent Research	2-Marketing	1	2,000	4,900	2,000	8,000	10,100	5,312	10,252	15,074

Finalized attributes, how not to double count, what type of data to collect..



**We created messaging!**

**“Why should data providers and municipalities contribute data to this?”**



**We brainstormed ideas for resources!**

**What materials could support data acquisition requests?**



Stormwater Management - Met x +

metroplanning.org/work/project/23/subpage/1

Twitter Facebook YouTube Instagram Newsletter Contact

Search...

Home Our work Our people News Events Library About MPC DONATE

Featured projects Project managers Support our work

## Green Infrastructure Baseline Inventory

Facebook Twitter Print Email Chat

### Calumet Stormwater Collaborative

Water flows across municipal boundaries, so it's important to coordinate on regional solutions to our shared stormwater challenges. The Metropolitan Planning Council, in coordination with the Calumet Stormwater Collaborative, are currently developing the Green Infrastructure Baseline Inventory, a **comprehensive, publicly available dataset documenting existing engineered green stormwater infrastructure** in the Calumet region of Illinois. This data will serve as an invaluable public resource to inform decisions and strategic planning to improve stormwater management across the Calumet region.

**Calumet Region Communities**

Legend

- Calumet Sag Channel- Little Calumet River
- Cook County
- Rivers and Lakes
- City of Chicago
- Forest Preserve

# Central Point of Information

- Project information & timeline
- Fact sheet PDF
- Map
- FAQ & contact information
- 2 options for data collection: spreadsheet & online form

Stormwater Management - Met x +

metroplanning.org/work/project/23/subpage/1

Twitter Facebook YouTube Messenger Instagram Newsletter Contact

# Metropolitan Planning Council

Search...

Home Our work Our people News Events Library About MPC DONATE

Featured projects Project managers Support our work

## Submitter's Information

Please include contact information for any followup questions.

1. Submitter's Name

2. Submitter's Role

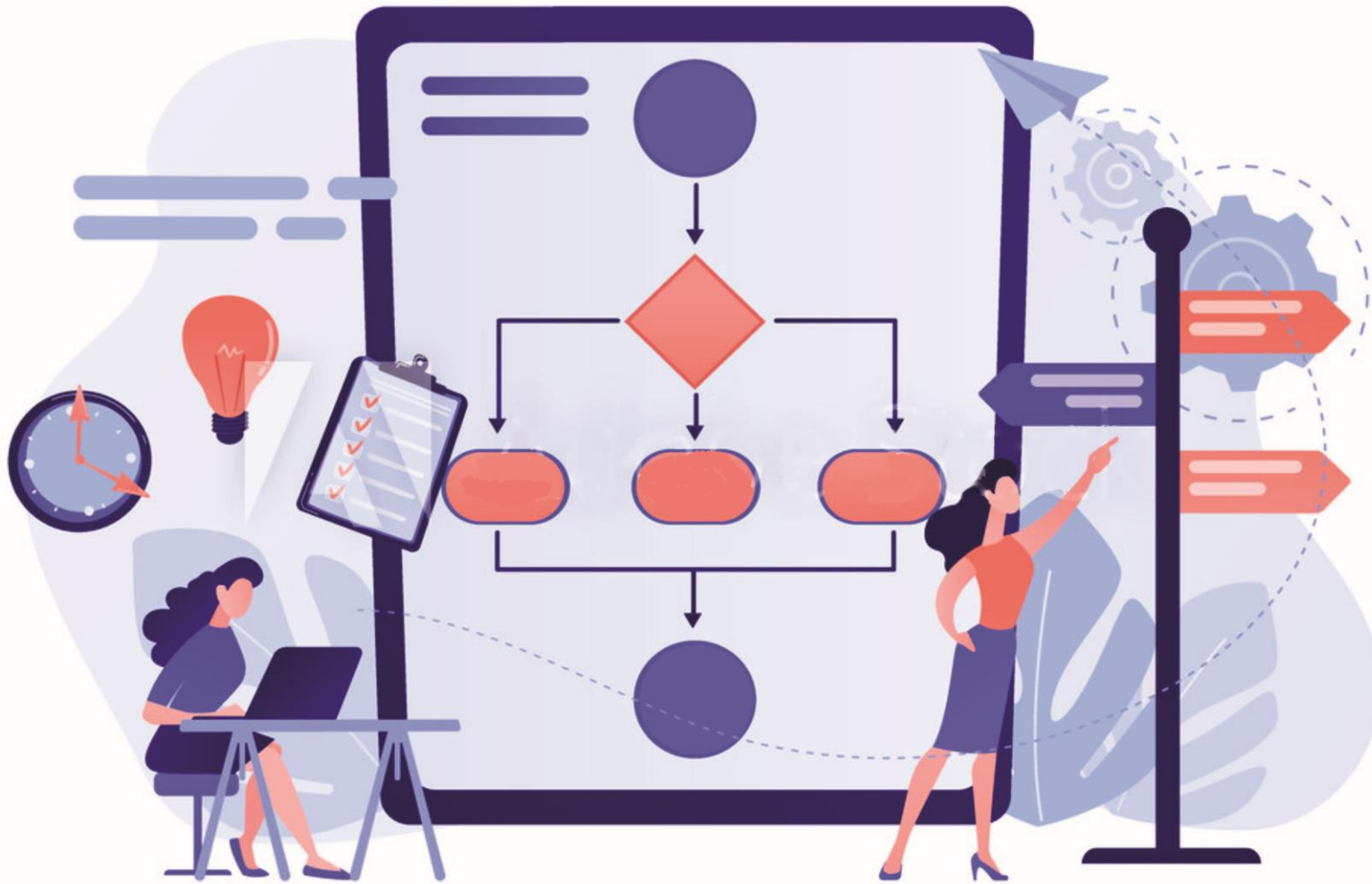
3. Submitter's email address

Next

# Data Collection

- **Online Form:** easy to use for data sources with only a few GI installations
- **Spreadsheet:** for data sources with many GI installations, can be downloaded and uploaded on website

# Beta Testing



Meet with a data sources to beta test online form and spreadsheet to ensure usability and function



# Launch!



Website landing page



Continued outreach



Data management

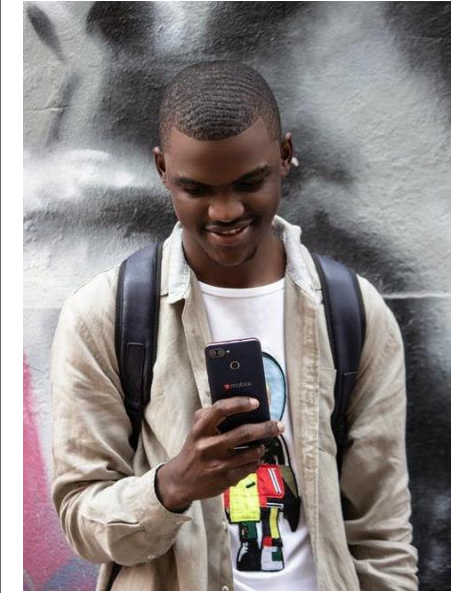
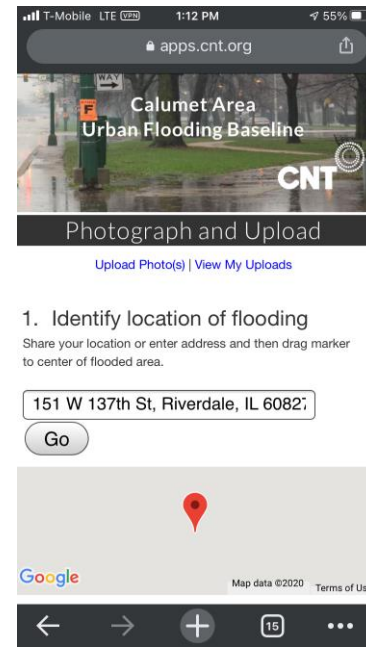
CSC Foundational Activity #2

# ESTABLISH A BASELINE OF NON- OVERBANK FLOODING

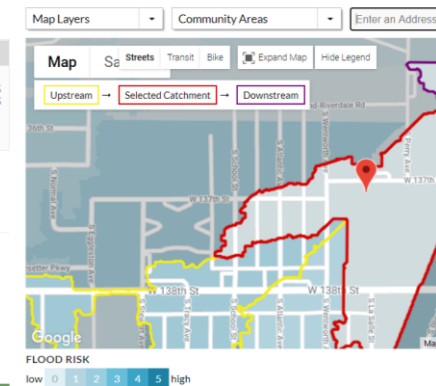
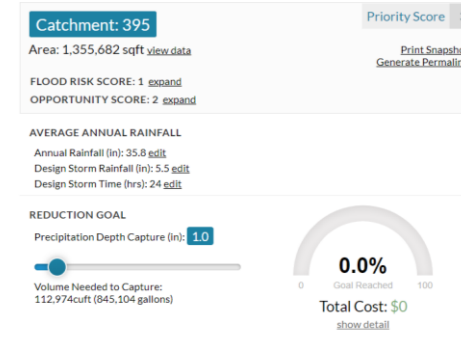
Year end review - December 6, 2019

# Calumet Urban Flooding Baseline – Update!

- [Phase 1 report](#) is complete! Thanks to those who reviewed.
- CNT is alpha testing a data collection web app (upper left).
- We are also recruiting a resident advisory group.
- Our goal is to preview a data visualization tool (lower right prototype) with municipal engineers in February for feedback.
- We plan to pilot a data collection effort in the South Suburban Communities MWRD master planning area in the spring of 2021.



## CNT/RainReady Resilience Planning Tool



CSC Foundational Activity #3

**DEVELOP AND PROVIDE RELEVANT  
TRAININGS AND MANAGEMENT SYSTEMS**

# Training and Maintenance Workgroup

Develop & execute training and management systems to bolster green infrastructure implementation and maintenance

## Issue

Lack of maintenance of stormwater infrastructure assets (green or gray) over time, and the consequence of this issue declining performance of infrastructure assets.



Examples of bioswales in downtown Indianapolis, IN. Left bioswale is in need of maintenance and revegetation; right bioswale is well vegetated and appears to be working properly.

Source: U.S. EPA. (2016) *Operation and Maintenance of Green Infrastructure Receiving Runoff from Roads and Parking Lots*. Technical Memorandum.



# Activities Completed

- Convene a pilot training session
- Evaluate approaches for on-going NGICP training.
- Develop a mechanism for providing *National Green Infrastructure Certification Program* (NGICP) training and testing in the Chicago area.
- Advance *Rainscaping* training for Master Gardeners.
- Evaluate the need for and feasibility of 1-day green infrastructure basic training for those who cannot participate in NGICP.
- Reach out to target audiences to engage them in trainings. (ongoing)
- Collect information on impacts/results. (ongoing)
- Evaluate results and refine as appropriate. (ongoing)

# Introduction to Green Infrastructure Systems & Maintenance

March 10, 2020  
South Suburban College, South Holland IL

7 modules, 6 trainers

13 training participants, from both Illinois and Indiana

- Exceeded expectations.
- Interest in NGICP certification.
- More information on all GI topics covered.

## Outcomes:

Continue emphasizing stormwater issues during the COVID-19 pandemic

- *Frontline communities are impacted by both*
- *High unemployment : Landscaping and Green Infrastructure Maintenance are essential jobs*

How to deliver in a pandemic?

Refining Our Niche – how are we filling the gap?

Broaden Marketing Outreach – reach our intended audience

Next trainings hosted by CRTI

- *Feb 2021- Part 1: Virtual, June 2021- Part 2: Hands-on*



**Training for Green Jobs!**

Currently enrolling for a 1-day training for competitive pay jobs in landscaping and green infrastructure

**March 10, 2020** Location: **South Holland, IL**

**Free Tuition Free Placement Assistance Lunch Provided!**

Email: [highbridge@oailinc.org](mailto:highbridge@oailinc.org) or call (312) 528-3557

Presented by the Calumet Stormwater Collaborative Training and Maintenance Workgroup

Logos: Calumet, OFI



# Green Infrastructure Maintenance Training: 2020-2022 funded by CRTI's GLRI grant

- CRTI awarded a GLRI grant to remove pavement along the Little Calumet in Alsip
  - Keep water onsite instead of runoff into river
  - And install GI including amended soil, plugs, trees, etc.
- Training included in grant proposal
- Refining / defining our goals
- Refining / defining our audience
- Building the framework
  - Sustainable program
  - Known throughout the region
- Innovation = meeting a lot of organizational goals

Contact: Emily Okallau [eokallau@mortonarb.org](mailto:eokallau@mortonarb.org)



# Rainscaping Course

## Illinois classes expected Spring 2021

Created by Purdue Extension Rainscaping Team. Illinois Extension to offer classes Spring 2021 (if safe to do so).

Focuses on residential-scale rain gardens.

Five, 3-hour training modules in a workshop setting.

Participants are typically Master Gardeners, Master Naturalists, and others with baseline gardening and/or stormwater knowledge.



See <https://extension.purdue.edu/rainscaping/> for more info.

**Contact: Eliana Brown [brown12@illinois.edu](mailto:brown12@illinois.edu)**

# National Green Infrastructure Certification Program (NGICP)



**Next class: January 2021**

In addition to online course work, class meets for required LIVE online discussions.

**Practices covered:**

- Bioretention (rain gardens, curb cuts, stormwater planters/tree boxes, tree trenches, and bioswales)
- Permeable pavements (porous asphalt, pervious concrete, pervious pavers)
- Rainwater harvesting (rain barrels and cisterns)
- Rooftop detention practices (green roofs and blue roofs)
- Dry wells
- Stormwater wetlands

Participants typically are employed in the GI field. Course developed by WEF.

**Contact:** Heidi Leuszler [hleuszler@parkland.edu](mailto:hleuszler@parkland.edu)



# Green Infrastructure Maintenance - Shared Services

---

- OAI funded to pilot this concept in the Calumet Region and Northwest Indiana
- Priority communities: City of Blue Island, IL, Village of Midlothian, IL, and City of Gary, IN
- Research and outreach support from MPC and Daylight
- Request for Qualifications for contracted service provider and Access and Indemnification Agreements with all landowners
- Maintenance provided to priority communities cost-free in 2020
- Planning is underway for continuation in 2021

# Newest member of OAI and the T&M working group:

Leslie  
Sebastian  
Dowling-  
McClelland

Born  
6/15/20



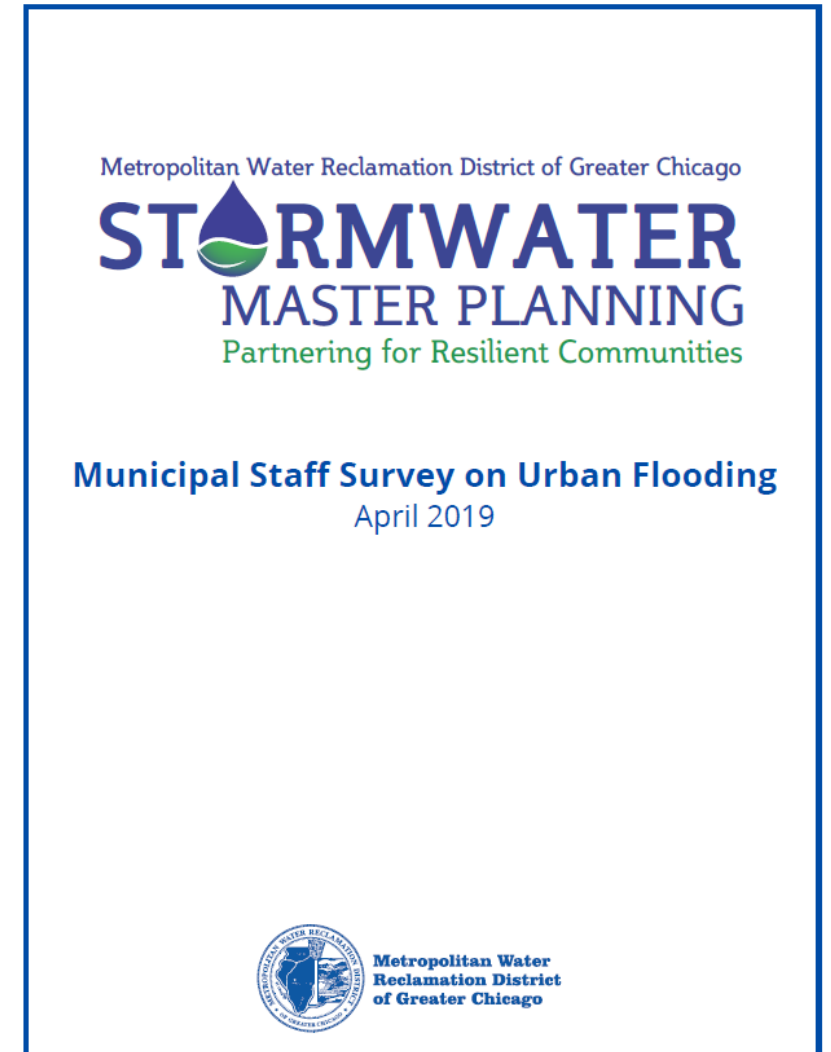
CSC Foundational Activity #4

# ESTABLISH A BASELINE OF MUNICIPAL CAPACITY IN STORMWATER MANAGEMENT



# MWRD + MO&E Work Group

- MWRD municipal survey distributed in May 2019
- Received 82 responses and 80 non-responses (approx. 50% reply rate)



# Next steps

- Brainstorm activities for the CSC to increase municipal capacity
- Discuss alignment of understanding with other working group activities

# Phase 1: Foundational Activities

## ACTIVITY 1

- Establish a baseline of existing green infrastructure

## ACTIVITY 2

- Establish a baseline of non-overbank flooding

## ACTIVITY 3

- Develop and begin to execute systems to provide relevant training and strengthen management systems to bolster green infrastructure implementation and maintenance

## ACTIVITY 4

- Establish a baseline of municipal capacity in stormwater management

# CSC 2020 ATTENDANCE

*And...*

...the Perfect Attendance Award...

...goes to



**Graig Neville**  
*CERA Solutions*





# Runners up (Jan-Nov 2020)

## 2<sup>nd</sup> place

1. Chelsey Grassfield, Friends of the Chicago River
2. Emily Okallau, CRTI/The Morton Arboretum
3. Jen Jenkins, The Nature Conservancy
4. Karen Kreis, Village of Midlothian
5. Lisa Krause, IDNR Coastal Management Program
6. Patrick Lach, Hey and Associates
7. Vidya Balasubramanyam, IDNR Coastal Management Program

## 3<sup>rd</sup> place

- Bill Wood, SmithGroup
- Margaret Schneemann, Illinois-Indiana Sea Grant

# *Honorable Mentions*

## Government Agencies

Cook County  
Cook County Dept. of Emergency Management and Regional Security  
DuPage County  
DuPage County Stormwater Management  
Forest Preserves of Cook County  
IDNR Coastal Management Program  
Metropolitan Water Reclamation District of Greater Chicago  
National Fish and Wildlife Foundation  
National Oceanic and Atmospheric Administration  
Chicago Metropolitan Agency for Planning

## Planning, Land Managers + Academics

Illinois-Indiana Sea Grant  
Purdue Extension  
Purdue University  
University of Michigan  
University of Illinois at Chicago  
University of Illinois at Urbana-Champaign  
University of Illinois Extension

## NGOs

Alliance for the Great Lakes  
Audubon Great Lakes  
Calumet Collaborative  
Center for Neighborhood Technology  
Chicago Conservation Corps  
CRTI at The Morton Arboretum  
Daylight  
Delta Institute  
First Street Foundation  
Foresight Design Initiative  
Friends of the Chicago River  
Greenleaf Communities  
Healthy Schools Campaign  
Metropolitan Planning Council  
OAI  
Openlands  
The Conservation Fund  
The Nature Conservancy  
The Trust for Public Land

## Communities

Village of Midlothian

## Private Companies

Baxter & Woodman  
CERA Solutions  
Christopher B. Burke Engineering  
Environmental Design International  
Geosyntec Consultants  
Grantify  
Hey and Associates  
Lewis & Associates  
Metro Strategies  
Mott MacDonald  
Robinson Engineering  
SmithGroup  
SPAAN Tech

## Community Groups

Blacks in Green  
Evanston Watershed Collective  
Greenest Region Corps

Thanks for a tremendous 2020!