



Calumet COLLABORATIVE

Calumet Stormwater Collaborative
August 2, 2019

The image features a light blue background with a map of the Calumet region. The map shows Lake Michigan at the top, with Chicago to the west and Gary to the east. The Little Calumet River and Trail Creek are labeled. A dark blue silhouette of a city skyline is at the bottom left, and a silhouette of a bird perched on a branch is at the bottom right. A dark blue rounded rectangle in the center contains the text 'Calumet' in large white letters and 'COLLABORATIVE' in smaller white letters below it.

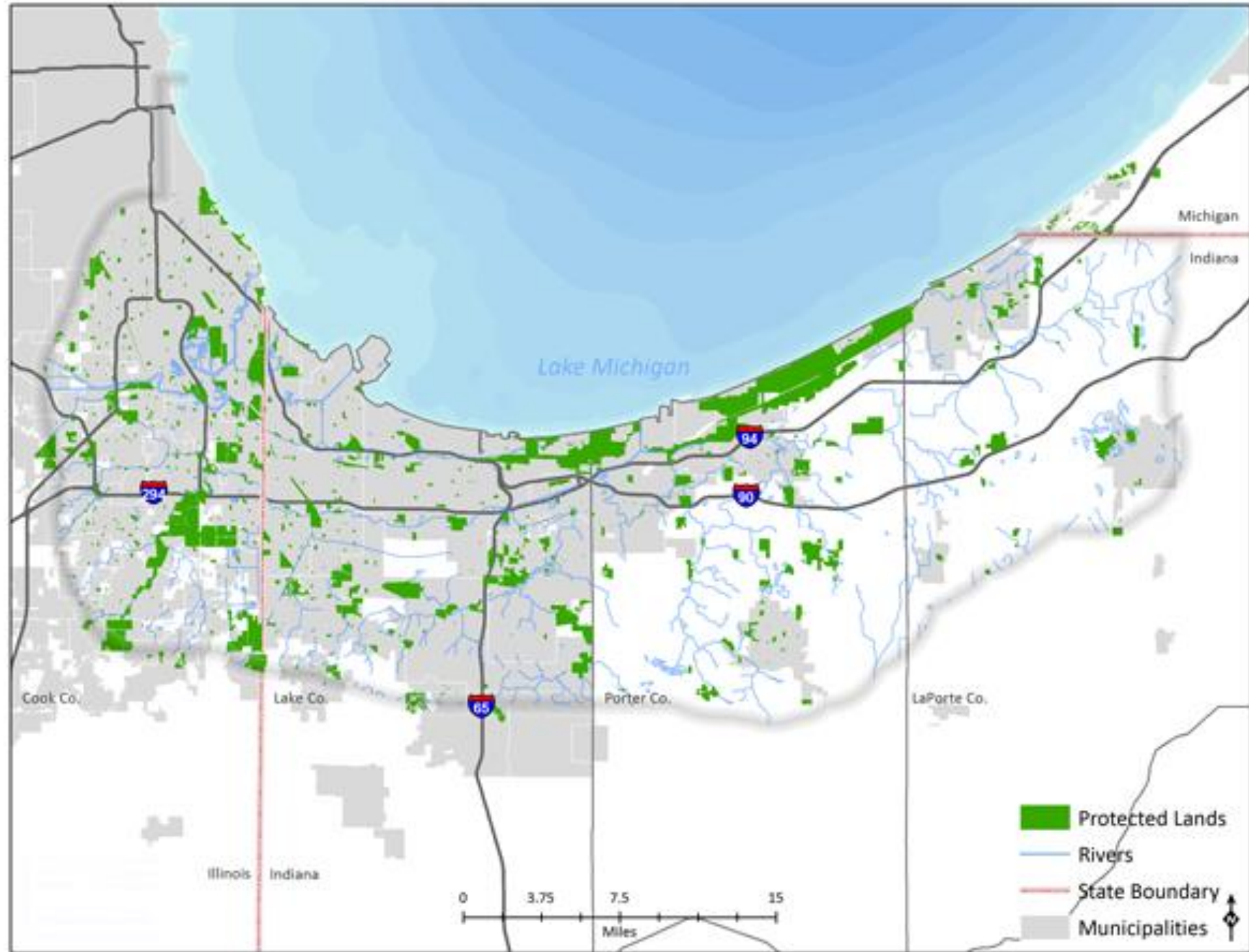
Calumet

COLLABORATIVE

Advancing a thriving Calumet region
through transformative sustainable development

Calumet COLLABORATIVE

Collaborative
501(c)(3) nonprofit
using **sustainable
development** to
transform the
region through
collective action



Sustainable Development





THE CHICAGO COMMUNITY TRUST AND AFFILIATES



Economy

Community



GAYLORD & DOROTHY DONNELLEY FOUNDATION



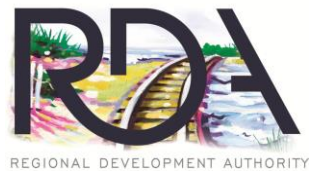
Culture

Environment





THE CHICAGO COMMUNITY TRUST AND AFFILIATES



Economy

Community



GAYLORD & DOROTHY DONNELLEY FOUNDATION



National Trust for Historic Preservation
Save the past. Enrich the future.™

Calumet Heritage Partnership



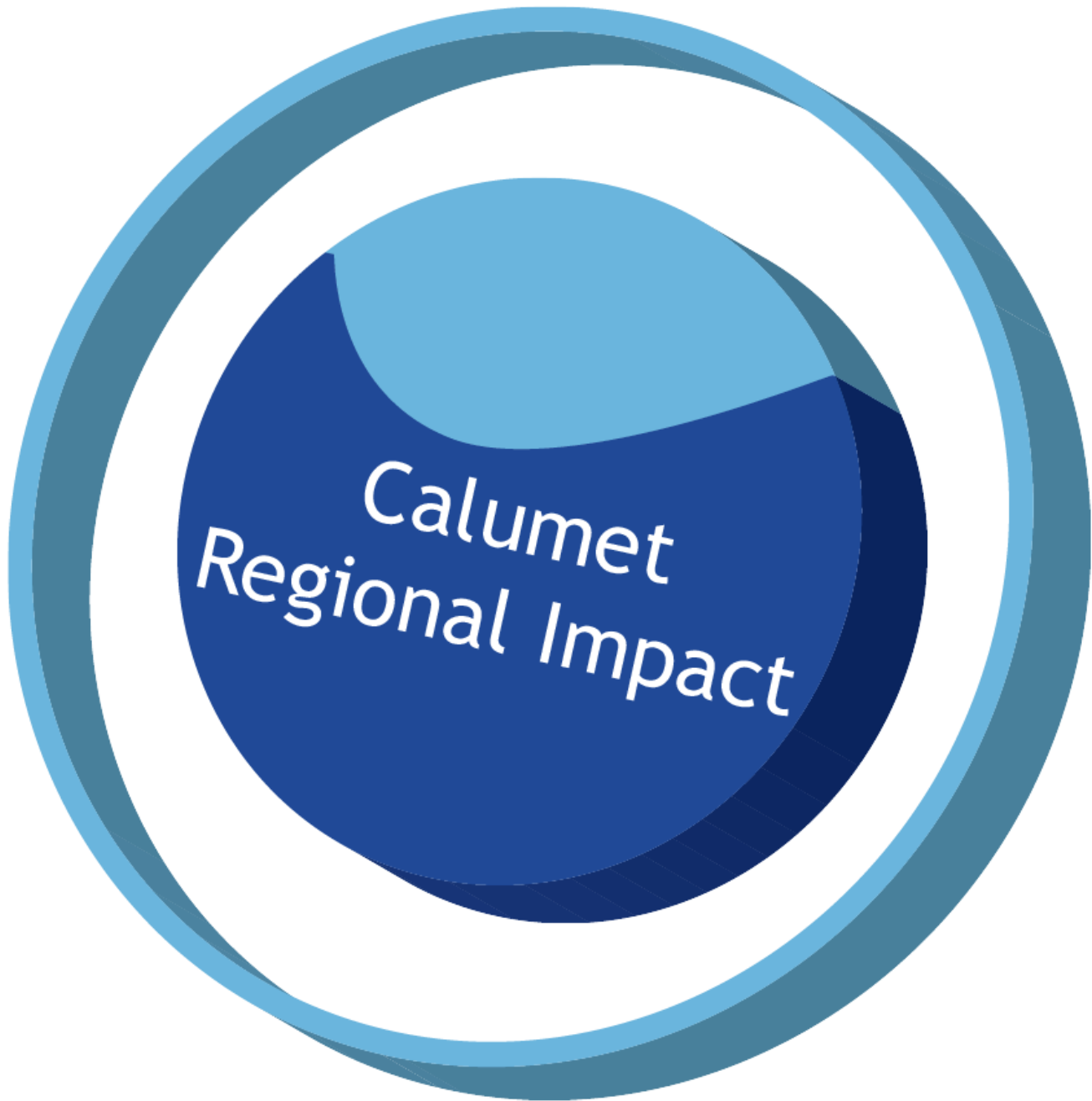
Culture

Environment



Urban League of Northwest Indiana, Inc.





Convene Workgroups
Capacity Building
Project Management
Facilitate
Advocacy
Communicate
Celebrate Success

Brownfield Redevelopment



Wayfinding



Jim Boyce, Daily Southtown

Economy

Community

Economic Opportunity

Livable Communities

Culture

Environment

Calumet National Heritage Area



Culture & Heritage

Environment

Bi-state Conservation Strategies



Brownfield Redevelopment

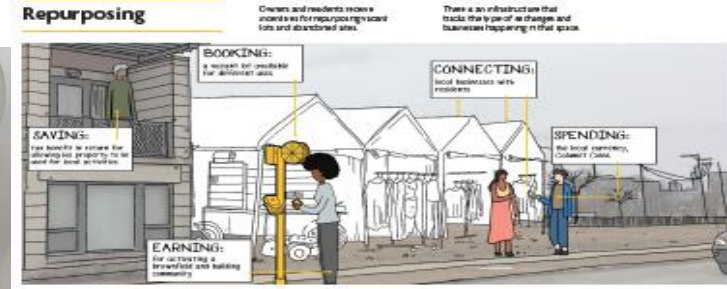
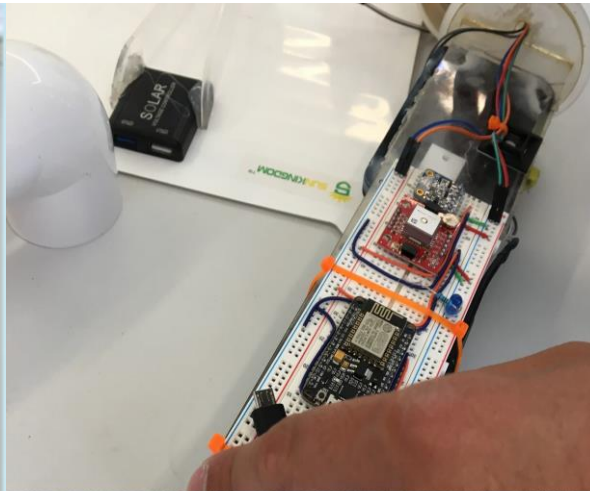


THE CHICAGO
COMMUNITY TRUST
AND AFFILIATES

IIT Institute of Design



IIT-ID The Future of Brownfields



Building skills

Residents receive on-the-job training to strategically fit local projects. Compensation is flexible and can be directed towards immediate needs, mid-term, or long-term goals.



Liquidity

Residents with a proven track record can access funds in advance of completing a job to pay off barriers.

Use parking tickets, Caltrans Code, left to grow over time can be spent at a future date.

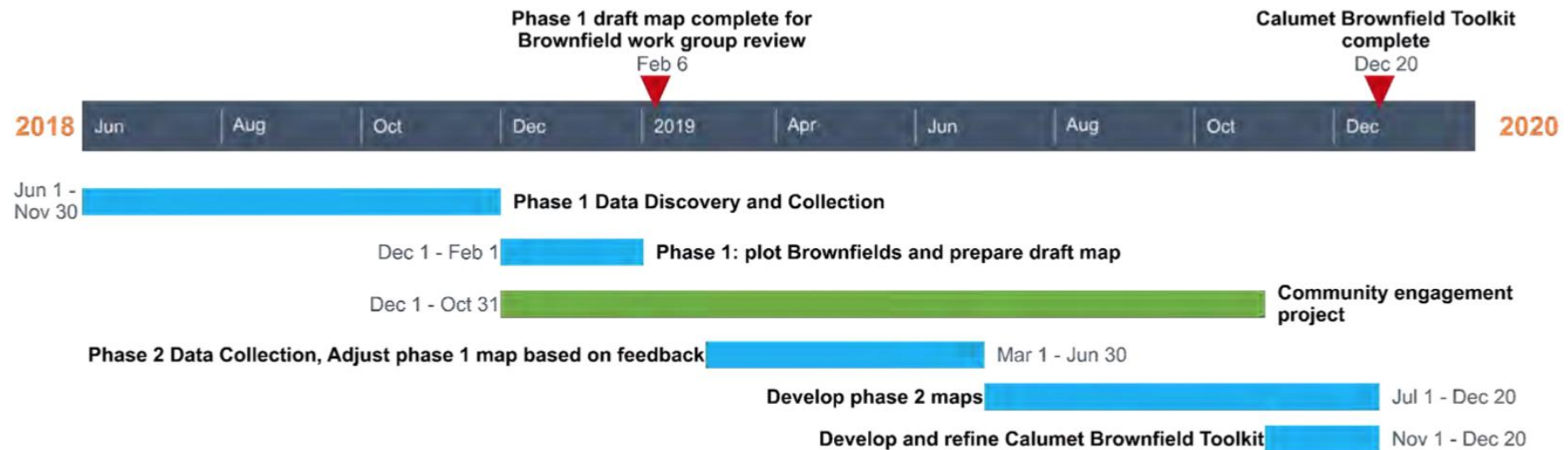


Brownfields Mapping Project

Brownfield Mapping Project

ABOUT THE PROJECT

The Calumet Collaborative is joining forces with Illinois and Indiana organizations to create a GIS (Geographic Information Systems) map of Brownfields and underutilized land in the Calumet region and their environmental condition. This inventory will help organizations align on bi-state strategies and projects to advance sustainable Brownfield redevelopment in the Calumet. Community needs will also be incorporated into strategies by incorporating a community engagement advisory panel.



Robbins Capacity & Resilience

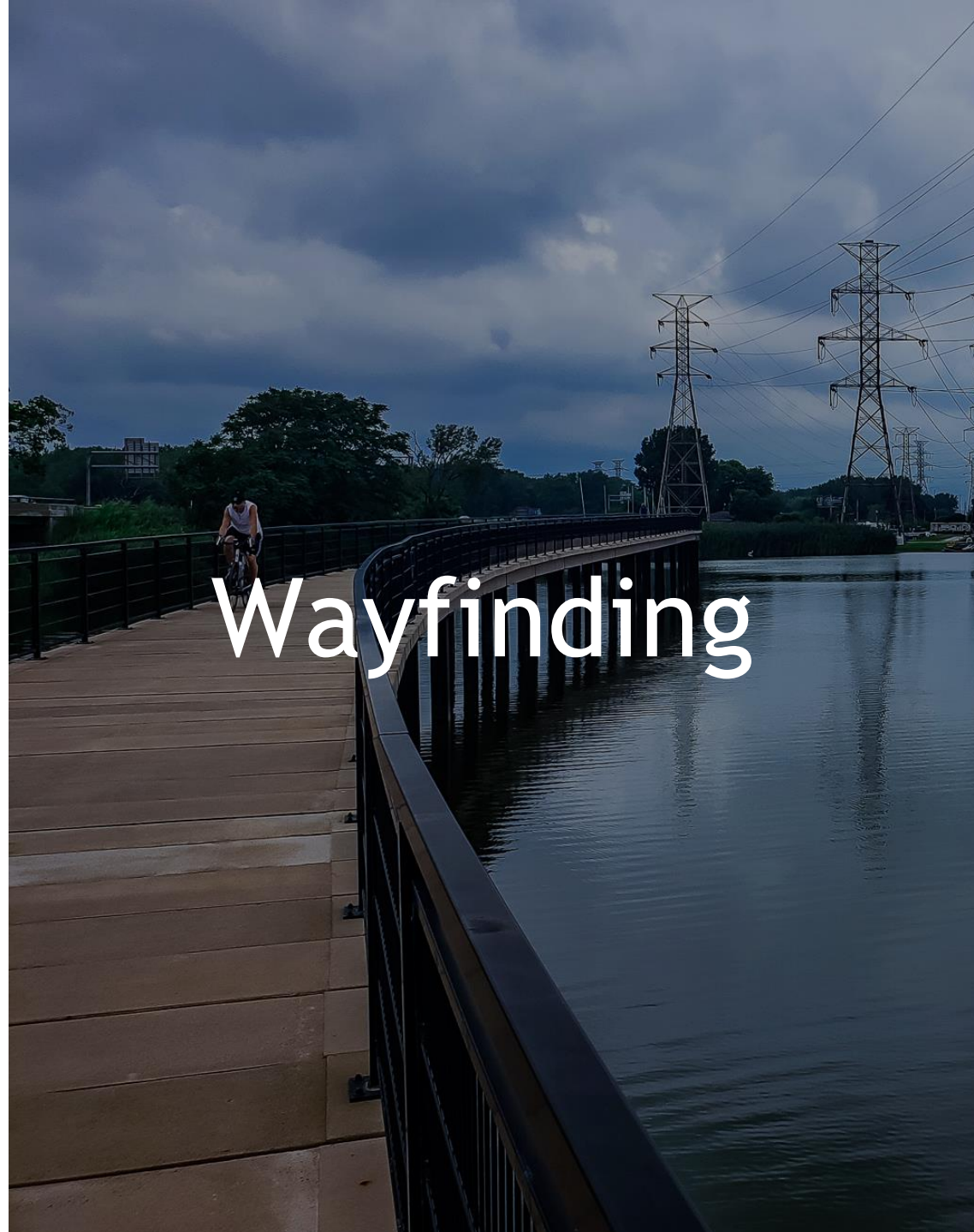


Chicago Metropolitan Agency for Planning





GAYLORD & DOROTHY
DONNELLEY FOUNDATION



Wayfinding

Calumet Heritage Identity & Branding

CALUMET HERITAGE AREA | IDENTITY & BRAND

Mood Board 1: VINTAGE INDUSTRIAL

The Calumet has an undeniable visual aesthetic of industrial class grit that the area exemplifies. While the area may diverge from this past, a brand that captures this history can speak to the future.

KEY WORDS:

CALUMET HERITAGE AREA | IDENTITY & BRAND

Mood Board 2: EXPLORATION & ADVENTURE

The Calumet is a place to explore, to discover, to expect it, and the journey will be an exciting one. The brand aims to capture the world-class region, as well as the sense of discovery.

KEY WORDS:

CALUMET HERITAGE AREA | IDENTITY & BRAND

Mood Board 3: BOLD CONTRAST

The Calumet is a place of bold contrast. Pushing this theme further through design tactics can highlight this quality of the region and move the brand in a contemporary, forward-looking, and creative direction.

KEY WORDS:

Juxtapositions
Innovative
Dramatic
Creative

HISTORIC graphics, in the form of vintage posters and memorabilia, are found throughout the area and often have a weathered look.



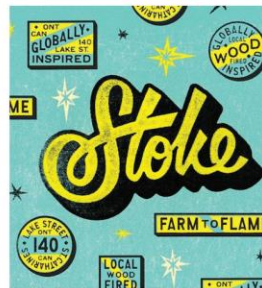
BADGES speak to the sense of place and history. Badges highlight environmental features and could feature any number of Calumet landmarks.



MANIPULATED photographs capture contrast and showcase human intervention in the landscape.



PLAYFUL type treatments incorporate elements with script type and bold, expressive letterforms.



HAND-DRAWN type highlights individuality and an adventurous spirit.



ILLUSTRATIONS highlight more specific elements of a place and work well in groupings.



BOLD TYPOGRAPHY feels both wild and manmade and packs a punch.



Burnham Multimodal Connector (BMC) Bridge

Burnham Multimodal Connector & Burnham Greenway Gap: Project Overview

Opportunity

A Memorandum of Understanding (MOU) has brought together various partners to collaborate on the planning and implementation of the Burnham Multimodal Connector (BMC), a flyover bridge of numerous rail tracks that will provide safe passage from the Village of Burnham to Hegewisch Metra Station and many various trail systems in Illinois and Indiana.

A New Path Forward

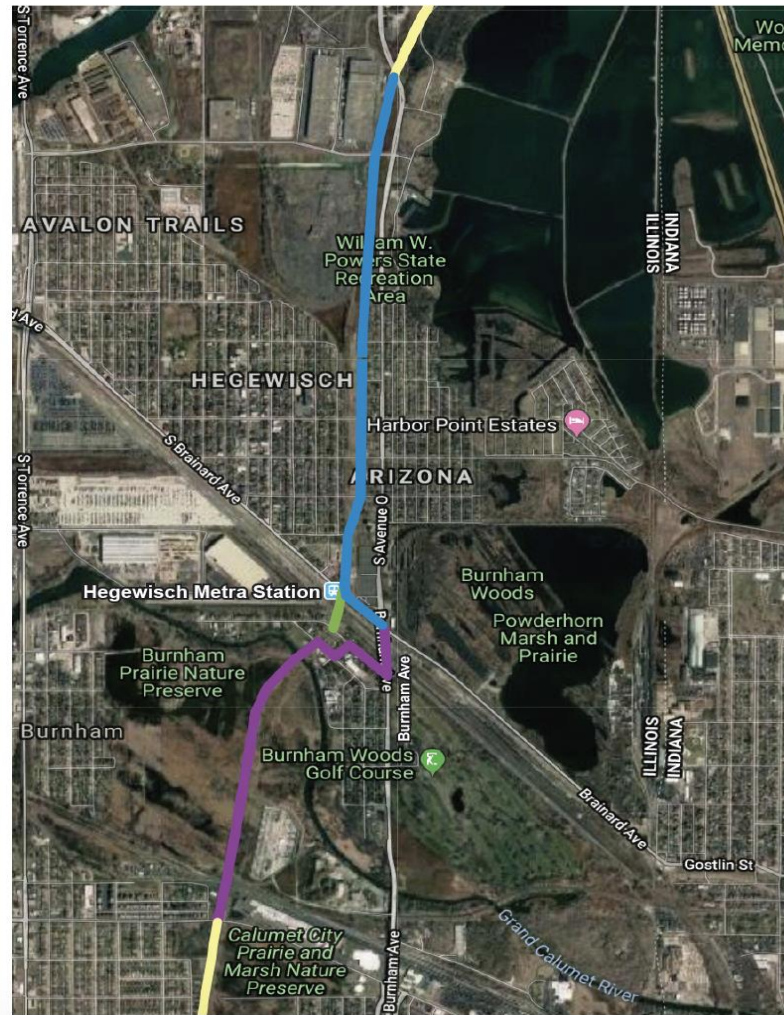
For years a solution has been needed to enhance the safety for crossing a series of railroad tracks in the Village of Burnham. New segments to the Burnham Greenway Trail have been planned to the south (Village of Burnham's Burnham Greenway Project) and north (IDNR Trail Segment) of the proposed BMC project. The BMC MOU presents a meaningful solution and demonstrates how the various Partners involved are working together to plan, build, and advocate for the BMC. Partners include, but are not limited to: Cook County Department of Transportation and Highways serving as project lead, Calumet Collaborative serving as the primary facilitator in outreach and communication, Village of Burnham applying for funding, and NICTD representing the railroad agencies involved. With the help of these Partners and many others, the momentum and framework is in place to bring this project to fruition.

Partners

- Active Transportation Alliance
- Calumet Collaborative
- Chicago South Bend and South Shore Railroad
- City of Chicago Department of Transportation
- Cook County Department of Transportation and Highways
- Metra
- National Park Service
- Northern Indiana Commuter Transportation District (NICTD)
- Openlands
- South Suburban Mayors and Managers Association
- Village of Burnham

Map Legend

- Burnham Multimodal Connector
- Village of Burnham Burnham Greenway Project
- IDNR Burnham Greenway Trail
- Existing Burnham Greenway



- 3 Municipalities
- 6 Railroads
- 3 Regional Planning Agencies
- 3 Trail Advocacy Organizations
- 1 Utility Company
- State & Federal Agencies

Calumet National Heritage Area



Calumet Heritage
Partnership



CNHA Coordinating Committee

CALUMET HERITAGE AREA

ABOUT PROGRAMS NATIONAL HERITAGE AREAS CONNECT Search

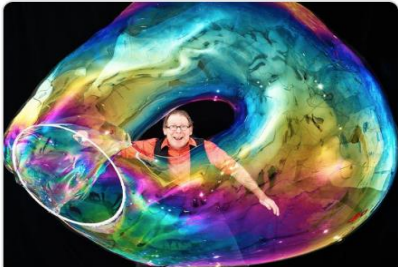
The Calumet Heritage Area is a place of nationally significant natural, industrial, labor, and cultural heritage assets, that are preserved and interpreted to advance economic opportunity, and enrich the lives of its residents and visitors from across the nation.



CNHA Coordinating Committee - Calendar

[Subscribe](#)[Pinboard](#)[Agenda](#)[Monthly](#)

Events from May 1st



Mon 6th May

Underbelly Festival

Underbelly fans! It's our 11th year on the South Bank and it's going to be our BIGGEST YET!

[Festival](#)

Sat 11th May - Sun 12th

Barnes Children's Literary Festival

We at BCLF want to get children excited about literature, literacy and creativity whilst giving them the tools

[Literary](#) [Culture](#)

Tue 21st May 2:00pm

MY GREAT ORCHESTRAL ADVENTURE

Oh no, the conductor of the orchestra is stuck in the future! We need to try and bring him back to the present day!

[Culture](#)

Sat 1st Jun 11:00am - 4:00pm

Family Fun Day: all about elements

Get hands-on with science at this season's Family Fun Day! In partnership with the Royal Society of Chemistry we

[STEM](#)

Calumet Heritage Area

[back](#) [twitter](#) [facebook](#) [linkedin](#) [print](#) [share](#) [email](#)

Calumet Voices, National Stories Exhibit (Reception)

Thu Jun 27th 5:30pm - 7:30pm

[Calumet-Heritage](#) • [Calumet-Voices-Exhibit-Event/Program](#) • [Class/Learning/Speaker](#) • [Environmental/Nature](#) • [Family-&-Community](#) • [Food-&-Drinks](#) • [Free-Event/Program](#) • [Indoors-Event/Program](#) • [Lake-Michigan/Waterways](#) • [Museum/Exhibition](#) • [Music/Concert](#) • [Southeast-Chicago](#)

11141 S Cottage Grove Ave, Chicago, IL 60628 [map](#)

The Calumet Heritage Partnership and Field Museum is proud to present the opening of the first "Calumet Voices, National Stories" traveling museum exhibit. Come learn about and experience the cultural and environmental heritage of the Calumet Region during this exhibits opening night. Guest lecturer, Mark Bowman, of the Field Museum, will give a presentation on the industrial and environmental heritage and memories encapsulated in this region, as well as the development of the Calumet National Heritage Area. An acoustic band will be playing Jazz, Rock and Roll, and Rhythm and Blues. Hors d' oeuvres and drinks will be provided by the Pullman Cafe.





Save the Dunes



ArcelorMittal



Bi-State Conservation Strategies

Conservation Action Planning (CAP) Process

March

3 months

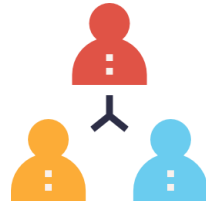
May



3 geographies



9, 2-hour meetings



27 people
16 organizations

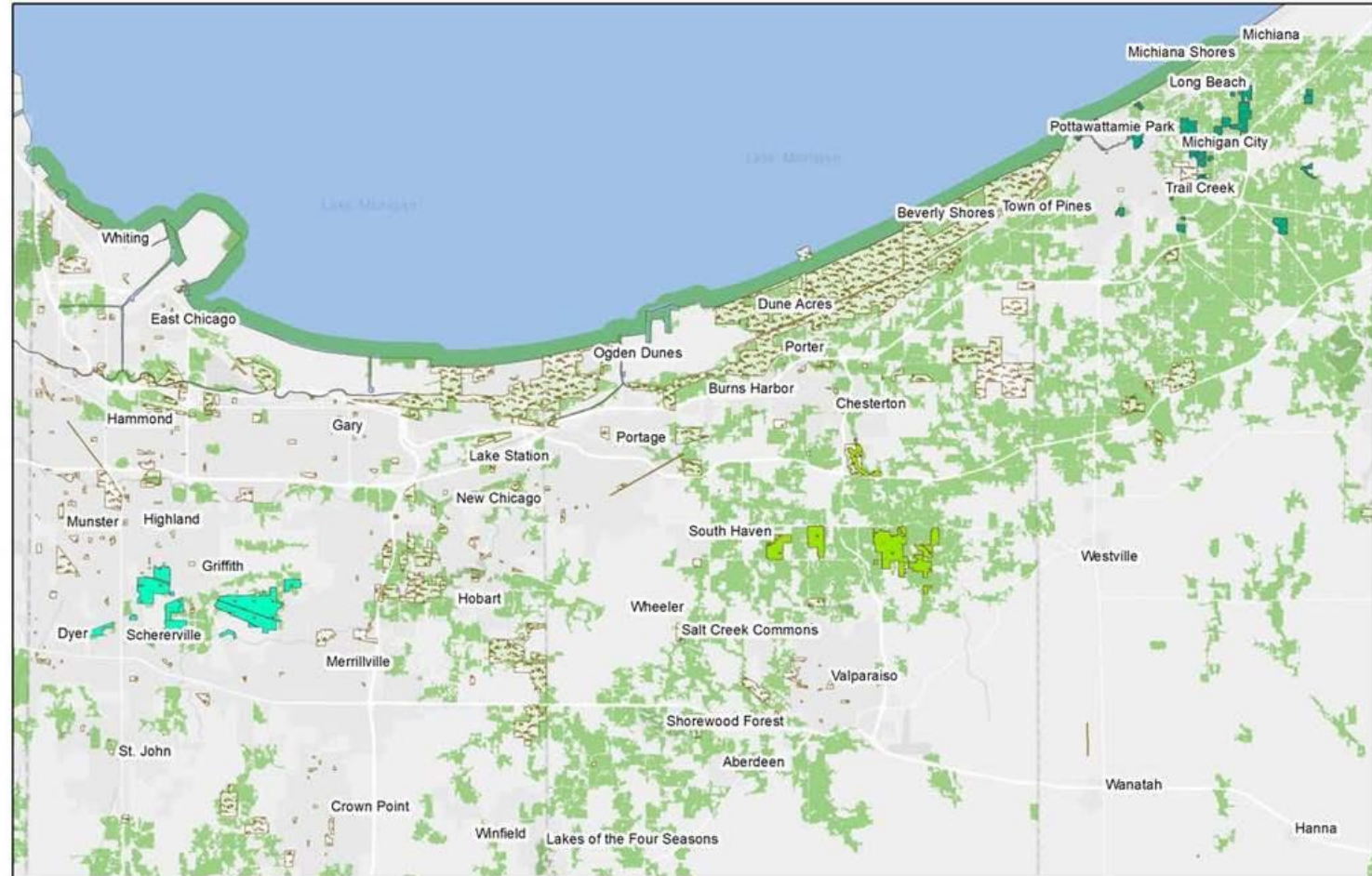
June

2 months

July



Final strategic plan covering 5 years



Legend

- Conservation Lands Class A
- Amber Flatwoods
- Hoosier Prairie
- Moraine
- Managed Land
- Core Habitat Patch, >40 ac.

Conservation Action Plan Focus Areas



Ambler Flatwoods

Conservation Action Plan *Factsheet*



Conservation Strategies

"Conservation Classes," graded according to their conservation potential, enable land managers to strategize conservation priorities. Utilized here, these rated classes identify opportunities for achieving the best conservation outcomes. They include management and restoration (Class A), land acquisitions (Class B) and increasing connectivity and buffering for existing natural areas (Class C). Additional strategic tools include policy development and stakeholder engagement. Collectively, these strategies are a guide to conserving Ambler Flatwoods.

Conservation Class A: Management and restoration of existing protected lands.

Conservation Class B1: Acquisition of land that adds to existing conservation areas or serves as buffer zones that protect conservation priorities from future development.

Conservation Class B2: Acquisition or other means of land protection that have the capacity to connect nature preserves, recreation sites and/or trails.

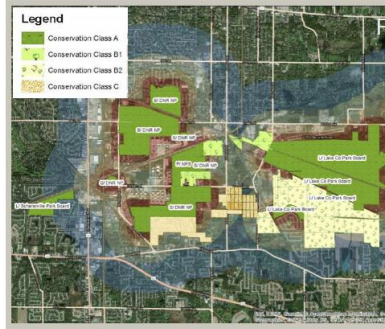
Conservation Class C: Incorporate conservation priorities into municipal planning and increase connectivity by incorporating working lands such as ROWs (Right-of-Ways).

Additional Strategic Tools
Development of policies that protect natural resources and outreach activities that cultivate local land stewards.

The Conservation Action Plan for Ambler Flatwoods was prepared collaboratively by:
CALUMET COLLABORATIVE | THE FIELD MUSEUM | THE NATURAL HISTORY SOCIETY OF INDIANA
INDIANA DEPARTMENT OF NATURAL RESOURCES
NORTHWEST INDIANA REGIONAL PLANNING COMMISSION
SAVE THE DUNES | SHIRLEY HEINZE LAND TRUST

Hoosier Prairie

Conservation Action Plan *Factsheet*



Conservation Strategies

"Conservation Classes," graded according to their conservation potential, enable land managers to strategize conservation priorities. Utilized here, these rated classes identify opportunities for achieving the best conservation outcomes. They include management and restoration (Class A), land acquisitions (Class B) and increasing connectivity and buffering for existing natural areas (Class C). Additional strategic tools include policy development and stakeholder engagement. Collectively, these strategies are a guide to conserving Hoosier Prairie.

Conservation Class A: Management and restoration of existing protected lands.

Conservation Class B1: Acquisition of land that adds to existing conservation areas or serves as buffer zones that protect conservation priorities from future development.

Conservation Class B2: Acquisition or other means of land protection that have the capacity to connect nature preserves, recreation sites and/or trails.

Conservation Class C: Incorporate conservation priorities into municipal planning and increase connectivity by incorporating working lands such as ROWs (Right-of-Ways).

Additional Strategic Tools
Development of policies that protect natural resources and outreach activities that cultivate local land stewards.

The Conservation Action Plan for Hoosier Prairie was prepared collaboratively by:
CALUMET COLLABORATIVE | THE FIELD MUSEUM | THE NATURAL HISTORY SOCIETY OF INDIANA
INDIANA DEPARTMENT OF NATURAL RESOURCES
NORTHWEST INDIANA REGIONAL PLANNING COMMISSION
SAVE THE DUNES | SHIRLEY HEINZE LAND TRUST



Wild white indigo (Photo by River Valley Park)



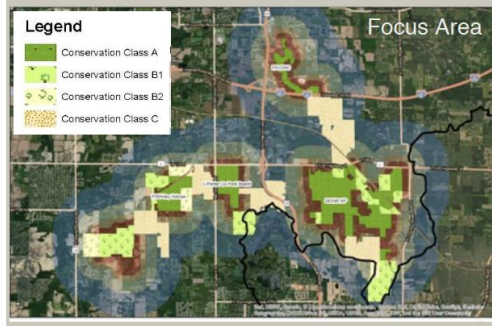
Liatris species nestled in mid-summer. (Photo by River Valley Park)

Moraine

Conservation Action Plan *Factsheet*



Common cottongrass, trillium and barred owls are among many species that call Moraine home. (Photos by Derek Nimetz, DNR)



Conservation Strategies

"Conservation Classes," graded according to their conservation potential, enable land managers to strategize conservation priorities. Utilized here, these rated classes identify opportunities for achieving the best conservation outcomes. They include management and restoration (Class A), land acquisitions (Class B) and increasing connectivity and buffering for existing natural areas (Class C). Additional strategic tools include policy development and stakeholder engagement. Collectively, these strategies are a guide to conserving Moraine.

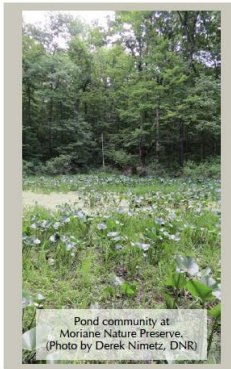
Conservation Class A: Management and restoration of existing protected lands.

Conservation Class B1: Acquisition of land that adds to existing conservation areas or serves as buffer zones that protect conservation priorities from future development.

Conservation Class B2: Acquisition or other means of land protection that have the capacity to connect nature preserves, recreation sites and/or trails.

Conservation Class C: Incorporate conservation priorities into municipal planning and increase connectivity by incorporating working lands such as ROWs (Right-of-Ways).

Additional Strategic Tools
Development of policies that protect natural resources and outreach activities that cultivate local land stewards.



Pond community at Moraine Nature Preserve. (Photo by Derek Nimetz, DNR)

The Conservation Action Plan for Moraine was prepared collaboratively by:
CALUMET COLLABORATIVE | THE FIELD MUSEUM | THE NATURAL HISTORY SOCIETY OF INDIANA
INDIANA DEPARTMENT OF NATURAL RESOURCES
NORTHWEST INDIANA REGIONAL PLANNING COMMISSION
SAVE THE DUNES | SHIRLEY HEINZE LAND TRUST

Funding provided by:
INDIANA LAKE MICHIGAN COASTAL PROGRAM



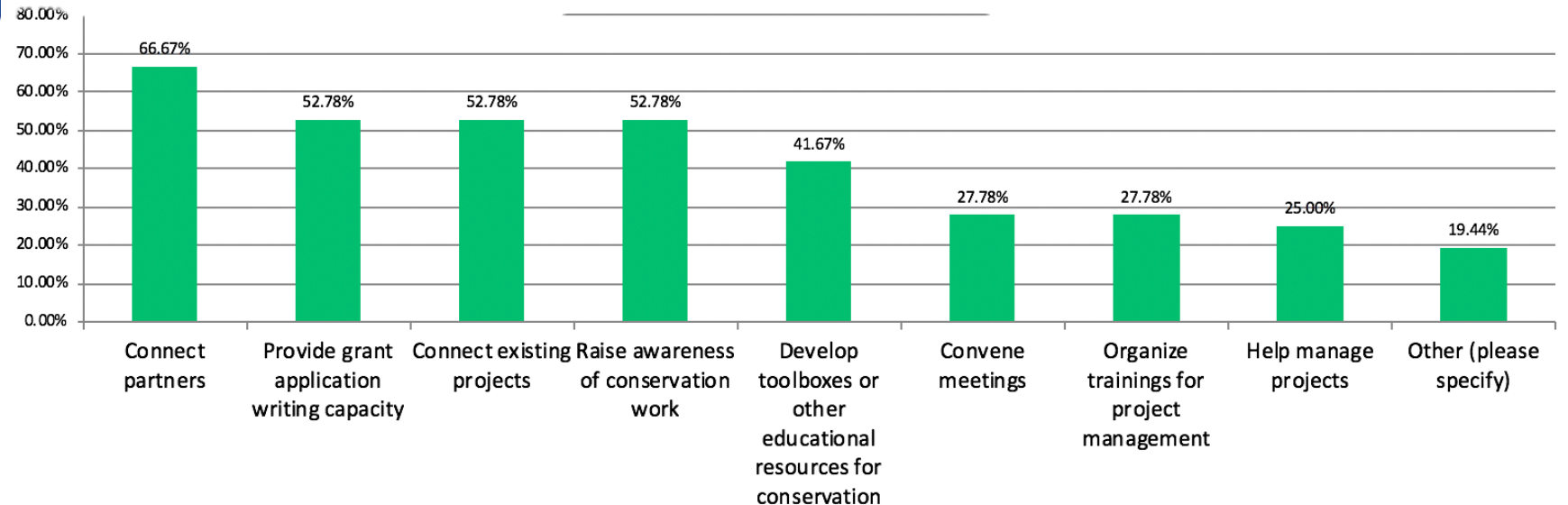
Final report on calumetcollaborative.org

Conservation Survey

Not enough staff / capacity was ranked #1 challenge for conservation work

role **staff** priority **Funding**
organizations **worktime** 69% identified more funding would help overcome conservation challenges
Lack partners **resources** start **land**
45% want a stronger network of partners that can help identify resources, and lend support and guidance **support** **projects**

Calumet Collaborative Role



Illinois International Port District

Please join the Illinois International Port District for the first annual State of the Port



The Illinois International Port District's First State of the Port Address

8/29/2018

[0 Comments](#)



Clayton K. Harris III, Director of the Illinois International Port District, in front of the boat "Innovation"

On August 23rd, Clayton K. Harris III, Director of the Illinois International Port District, presented the first State of the Port address. The Illinois International Port District hosted this meeting as part of an effort to engage the public with what's currently going on at the Port, and visions for the future.

After all, there is a "difference between being IN the community and being PART of the community", a sentiment driven home by Mr. Harris, and this public meeting was just one example of how the Port District supports the community and will continue to do so moving forward.

Metrics - How Do We Measure & Report



Metrics - Alignment

Economic Opportunity & Brownfield Redevelopment

Economic Opportunity & Brownfield Redevelopment		
Related SDGs	Related SDG Target	SDG Indicators / Possible Metrics
8 - Decent work and economic growth	By 2030, achieve full and productive employment and decent work for all women and men, including for young people and persons with disabilities, and equal pay for work of equal value	Unemployment and Average hourly earnings of female and male employees, by occupation, age and persons with disabilities
Promote sustained, inclusive and sustainable economic growth, full and productive employment and decent work for all	Related STAR Communities Actions	Related STAR Communities Measures
	Engage in regional coordination with other governmental, public, private, and non-governmental entities to attract and retain businesses in the region Participate in and promote project labor agreements, community benefit agreements and local hiring agreements	EJ102: Employment: Demonstrate the percentage change between the jurisdiction's employment rate and the national rate is 10% or better EJ103: Equitable Employment: Demonstrate the percentages of employed are proportional to the population in the labor force for each racial/ethnic group
9 - Industry, innovation and infrastructure	Related SDG Target	SDG Indicators / Possible Metrics
	By 2030, upgrade infrastructure and retrofit industries to make them sustainable, with increased resource-use efficiency and greater adoption of clean and environmentally sound technologies and industrial processes, with all countries taking action in accordance with their respective capabilities	CO2 emission per unit of value added
Build resilient infrastructure, promote inclusive and sustainable industrialization and foster innovation	Related STAR Communities Actions	Related STAR Communities Measures
	Conduct an assessment or inventory of the community's working lands Provide support services or programs for future operators and owners of working lands Include evaluation of green infrastructure potential during early site reviews of proposed developments and subdivisions	NS601: Protection (Working Land): Demonstrate an increase in the acreage of working lands in the jurisdiction NS602: Production (Working Land) Demonstrate an increase over the past 3 years in the production of goods from local working lands NS101: Green Stormwater Infrastructure: Demonstrate that 35% of the jurisdiction's land area has designated green stormwater infrastructure providing bioretention and infiltration services



Metrics - Alignment

ONTO 2050

3 principles

- Inclusive Growth
- Resilience
- Prioritized Investment

Indicators in 6 categories (82 page guide):
Community, Prosperity, Environment,
Governance, Mobility and Inclusive Growth

NWI 2050 Focus Areas

-  • Economy + Place
-  • Environment
-  • Mobility
-  • People & Leaders


Greenest Region Compact

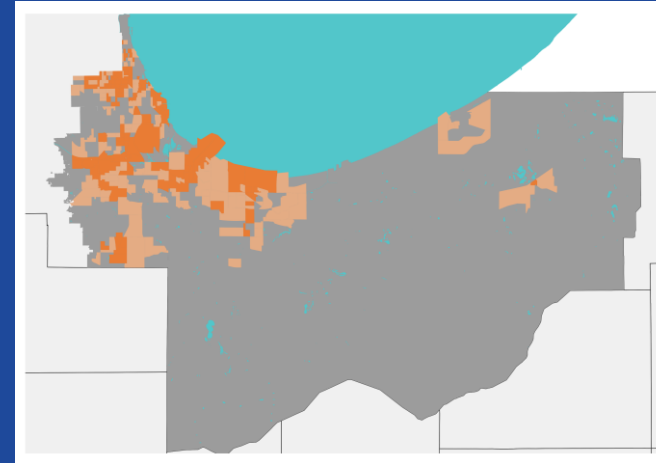
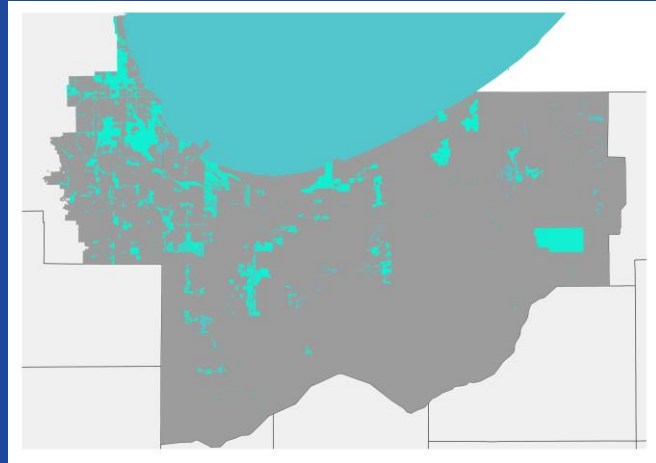
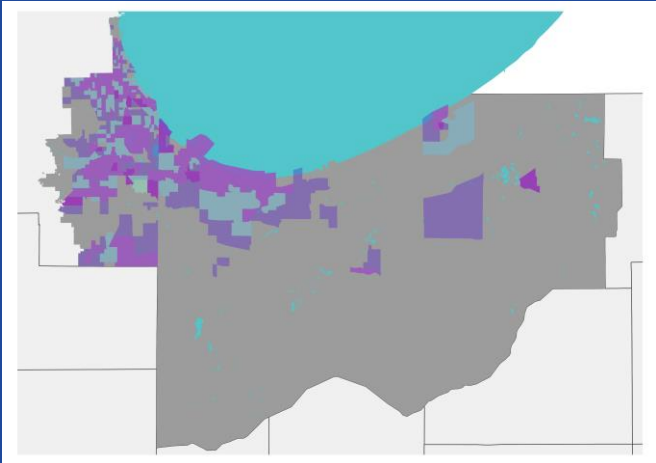
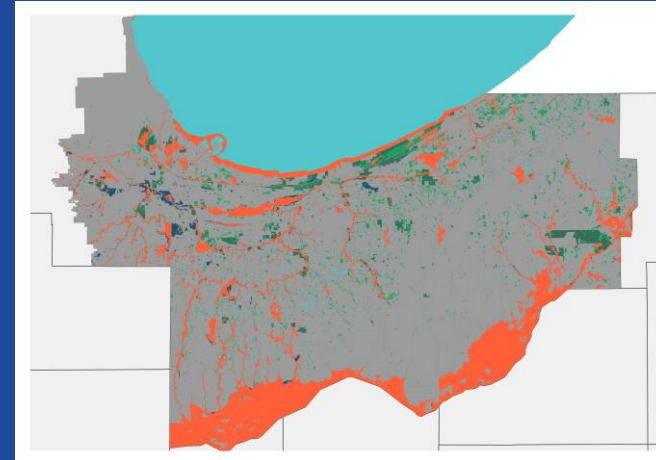
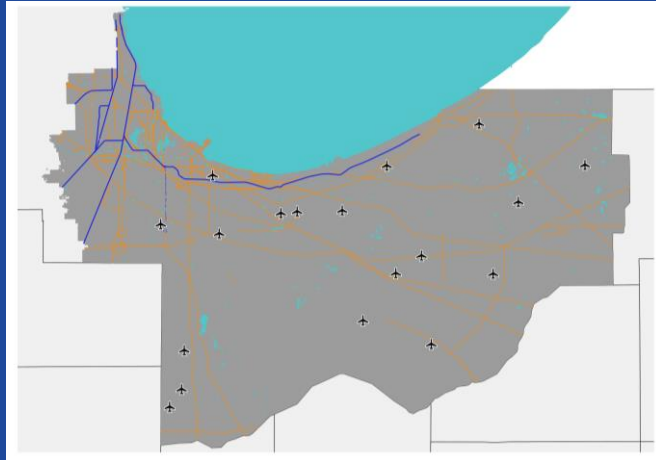
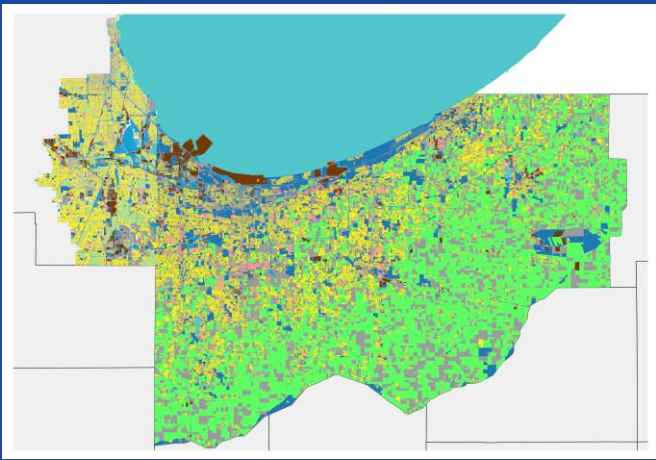
Framework's 10 categories:

- Climate
- Economic Development
- Energy
- Land Use
- Leadership
- Mobility
- Municipal Operations
- Sustainable Communities
- Water
- Waste & Recycling



Metrics - How Do We Measure & Report

Project Dashboard: Brownfield Redevelopment				April 2019			
Strategic Initiative: Explore and align bi-state Brownfield Redevelopment Strategies							
Focus Area: Economic Opportunity							
Project Description	Align on sustainable bi-state redevelopment strategies for Brownfields and underutilized land.			Legend	On Track / Exceeding Goal: Needs Attention		
Project Goals / Objectives	Build off existing resources including vacant land and community assets, utilize productive reuse examples, identify opportunities for action, while engaging multiple stakeholders throughout the process.			Pending Finished			
Funding & Staff Allocation	Funding \$15,000 available of \$50,000 Source Chicago Community Trust	Staff Sarah Coulter (15% Allocation) Ashley Hodges (25% Allocation)		Key Contacts outside of Calumet Collaborative			
Reference Materials & Tools	Future of Brownfields Project Reports The Future of Brownfields News Brownfield Project Packet			Andre Nogueira	UIC Voorhees		anogueira@iit.iit.edu
Suggested Metrics / KPIs	Acres in productive or value added use from previous brownfields Number of jobs, from previous brownfield acreage that has been put back to productive use Reduction in residential blight - decrease in vacancy rate			Jessica Kursman	UIC Voorhees	312.413.0215	kursman2@uic.edu
				Barb Scaperdine	MWRD	312.751.5938	scapardineb@mwrdr.org
				John Watson	MWRD		Watson@mwrdr.org
				Jose Alarcon	SSMMA	708.922.4673	Jose.Alarcon@ssmma.org
				Nick Zettel	UIC Voorhees		
				Margaret Renas	Delta Institute	312.554.0900	mrenas@delta-institute.org
Status on Projects							
Dates	Projects	Status	Progress	Next Steps and/or Immediate Needs			
Now - Q2 2019	IIT Institute of Design " Future of Brownfields" Project		The ACT Calumet workshop allows students to create prototypes that explore using digital technology to empower local residents to reactivate abandoned properties. IIT ID Received funding from Kresge Foundation to pilot the FLAG Calumet installation kit which connects youth to nature and science using an art installation in parks that measures environmental data.	Convened partners to participate in an Act Calumet forum on April 10, which gave feedback on student prototypes - that feedback was incorporated through a workshop during the following week. Final class where all prototypes will be presented is on May 9th.			
Now - Q4 2019	Calumet Brownfield Mapping (UIC, MWRD, NIRPC, SSMMA, Delta Institute, Cook County)		UIC developed a methodology for Brownfield mapping which starts with creating a base map of key assets and brownfields before adding social and economic information. Contracted a masters student at UIC to help with the more technical mapping components of this project. Brownfield Work Group met on April 22nd to discuss the exact definition of Brownfields and how underutilized sites will appear on the Brownfield Map. A phased approach to mapping 5 types of underutilized sites will be used.	The work group is prioritizing 3 types of Underutilized Sites for Phase 1 of Brownfield Mapping: EPA Brownfields, Abandoned Industrial Sites, and Closed Landfills / Dumps. Further research is being done to come to agreement on how these 3 types of underutilized sites will appear on the map. All other aspects of the base map (water, transportation, zoning, land use) is near complete.			
Now - Q3 2019	Community Engagement Strategy for Brownfield Development		Signed contract to bring Delta Institute on using \$15,500 of the available \$30,000 CCT Brownfield funds. Delta will work on building a community engagement model that will incorporate community feedback into Brownfield redevelopment strategies.	Discovery and phase 1 of Community Engagement project are complete and being reviewed before moving onto Phase 2, which starts to build out community engagement advisory panels that are par of the larger community engagement model.			
April - June 2019	Brownfield and Opportunity Zone (BOZ) Bootcamp		Calumet Collaborative is an organizational partner for Brownfieldlistings.com BOZ Bootcamp on June 19th, and is specifically coordinating the Site Pitch Competition, where site owners will have the chance to pitch sites in an opportunity zone to judges and win a prize and potential connections for further investment and development.	The pitch competition parameters have been agreed upon. Next steps are to create digital collateral to promote the pitch competition and sign ups.			
Not started (likely Q4 2019)	Create educational resources (toolkit) for municipalities, professionals, developers, and others working with economic development in the region		This project will start after the Brownfield Map has been created and the community engagement project is complete, as they will both be key resources in creating educational resources or toolkits.				
Lead Partners				Supporting Partners			
The Chicago Community Trust Brownfieldlistings.com Cook County Environment and Sustainability Delta Institute Illinois Institute of Technology (IIT) Institute of Design (ID) Metropolitan Water Reclamation District (MWRD) Northwest Indiana Regional Planning Commission (NIRPC) South Suburban Mayors and Managers Association (SSMMA) University of Illinois Chicago (UIC)				Black Metropolis Heritage Commission Center for Neighborhood Technology Chicago Metropolitan Agency for Planning (CMAP) Chicago Neighborhood Initiatives City of Gary Congressman Vislosky Cook County Bureau of Economic Development Illinois International Port District (IIPD) Indiana Regional Development Authority Metropolitan Planning Council Neighborhood Housing Services NWI Forum OAI, Inc. US Forest Service			

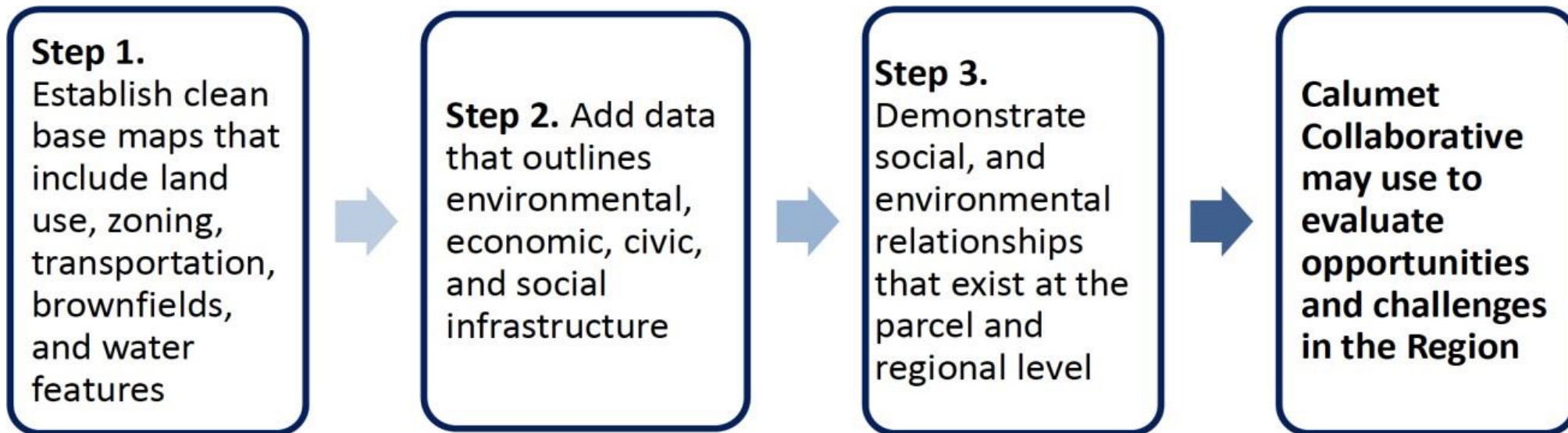


Brownfield Mapping Project



Project Mission, Output & Methodology

Mission	Put underutilized sites back into productive reuse
Output	Map of underutilized sites in the Calumet region with additional layers of assets, opportunities, and barriers that inform decision making for putting sites back into productive reuse
How	The Calumet Collaborative Brownfield Working Group will determine what information is put on the map and how it is displayed, ensuring the map resonates with various audiences. Once base information is on the map, the Calumet Collaborative Brownfield Working group will determine what to work on



Map Use: How, What, Who

How

- Long-term land use and planning strategies
- A launch point to determine:
 - What to work on to put underutilized sites back into productive reuse
 - Best future use of a site

What

- Shows sites that are contaminated or have perceived contamination (Stage 1 Sites)
- Base map layers to aid in decision making
- Data dictionary distributed

Who

- Current Audience: Calumet Collaborative Brownfield Working Group & Advisory Council
- Future Audiences (requires funding):
 - Economic Development organizations
 - Community Organizations / Public
 - Environmental Organizations / conservation
 - Developers

Over a Year of Collaborative Work



**Nathalie P. Voorhees Center
for Neighborhood and
Community Improvement**



**Metropolitan Water
Reclamation District
of Greater Chicago**



**Illinois Environmental
Protection Agency**



**THE CHICAGO
COMMUNITY TRUST
AND AFFILIATES**



Brownfield Working Group

Small Group Meetings

One-on-one Calls /
Meetings

Trainings & New Software
(QGIS)

Data Collection and Analysis



**Uniform data between
Illinois & Indiana**

Brownfield Definition

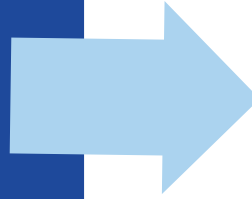
Start with the EPA Definition and further define

A brownfield is a property where the expansion, redevelopment, or reuse of which may be complicated by the presence or potential presence of a hazardous substance, pollutant, or contaminant

Stage 1

Map underutilized sites where information is more readily available and easier to manage, and that potentially pose greater health risks to the community

1. US EPA or State Brownfields
2. Closed & Active Landfill, C&D Landfill
3. Abandoned Industrial Sites



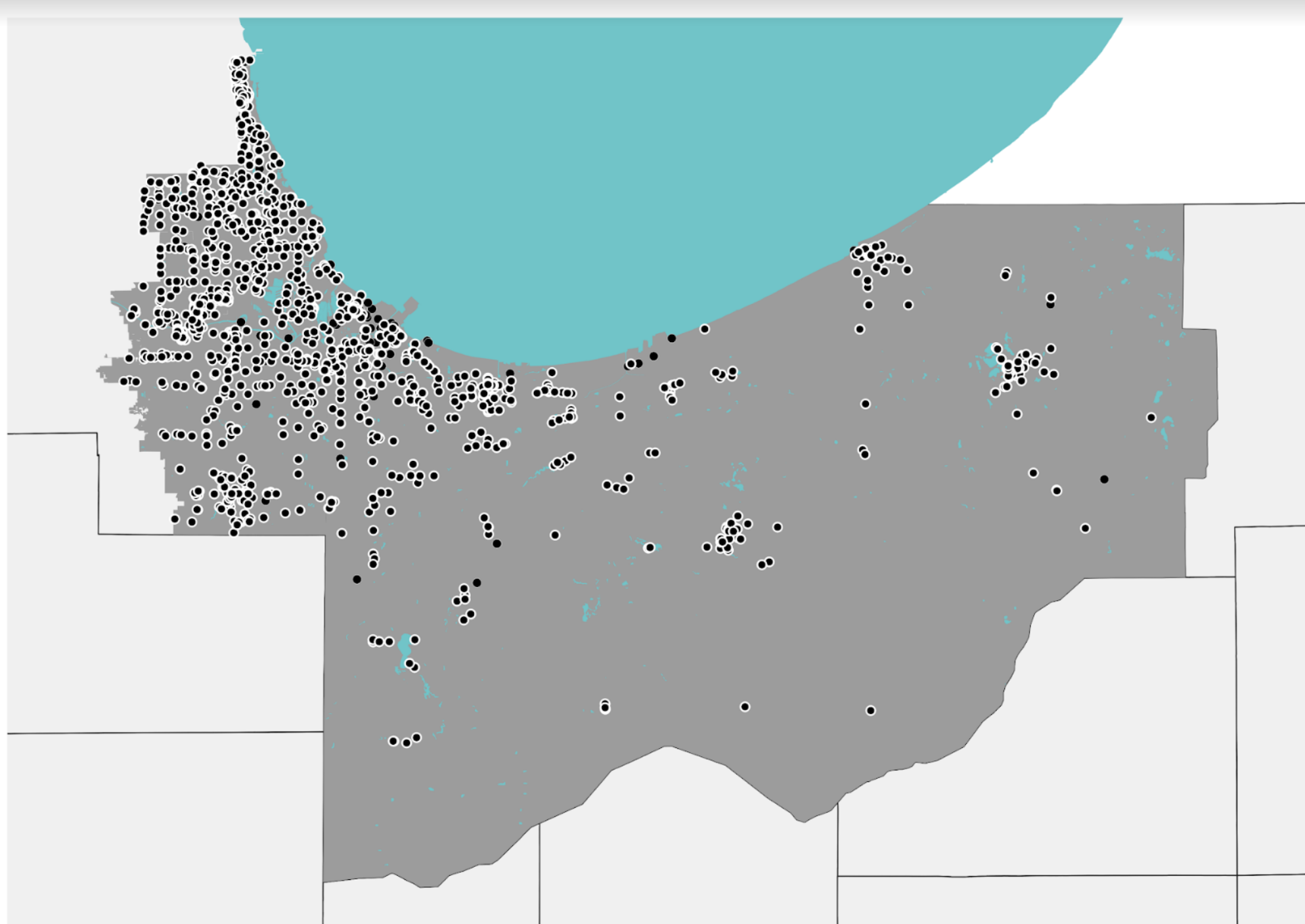
Stage 2

In order to map and manage these sites, more research and time is required

4. Unmanaged Natural Areas
5. Vacant or Blighted residential lots
6. Vacant or Blighted commercial lots

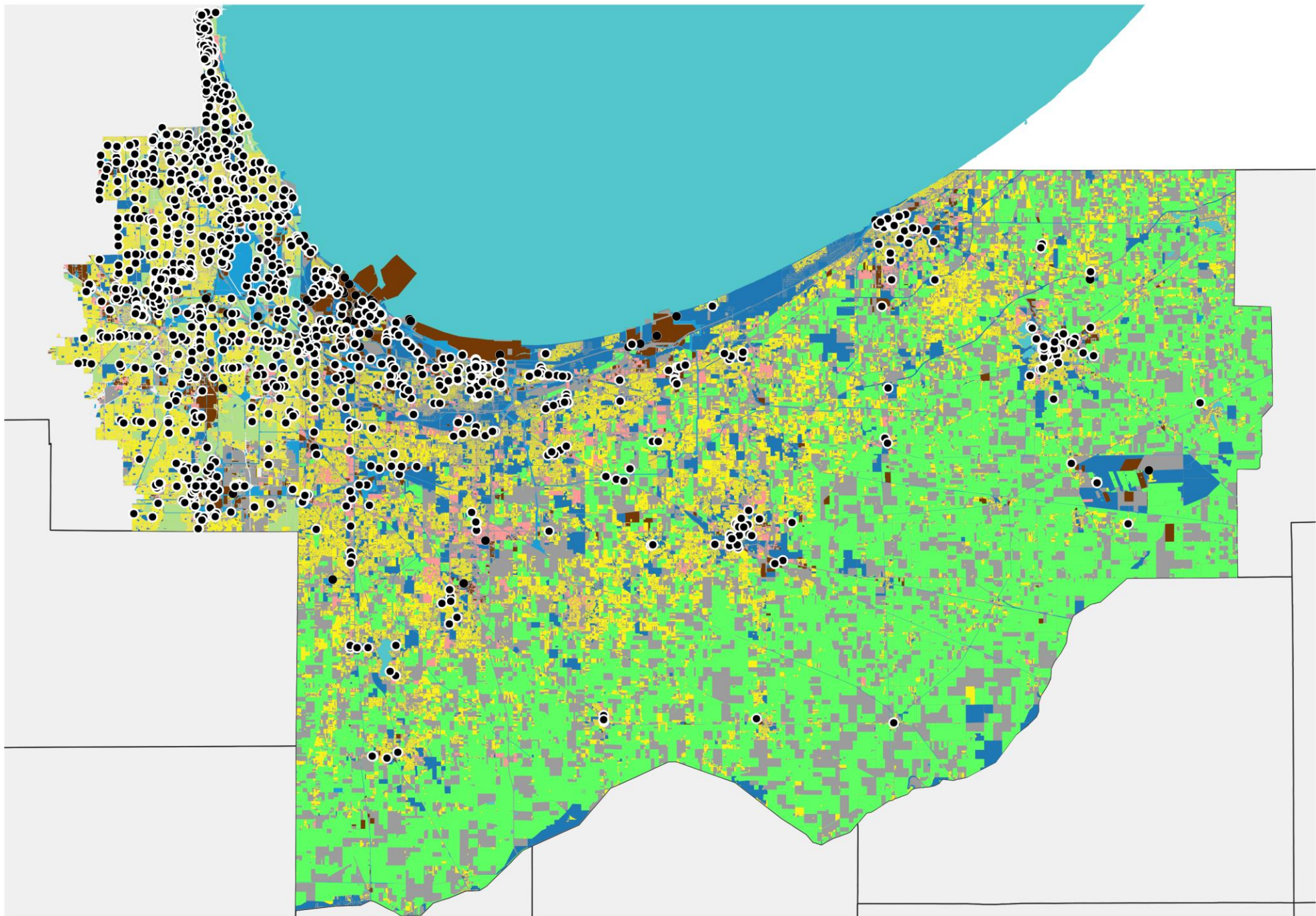
Stage 1 Sites

- EPA Brownfields
- State Site Remediation
- LUST
- Closed Landfills
- RCRA Hazardous Waste needing Corrective Action



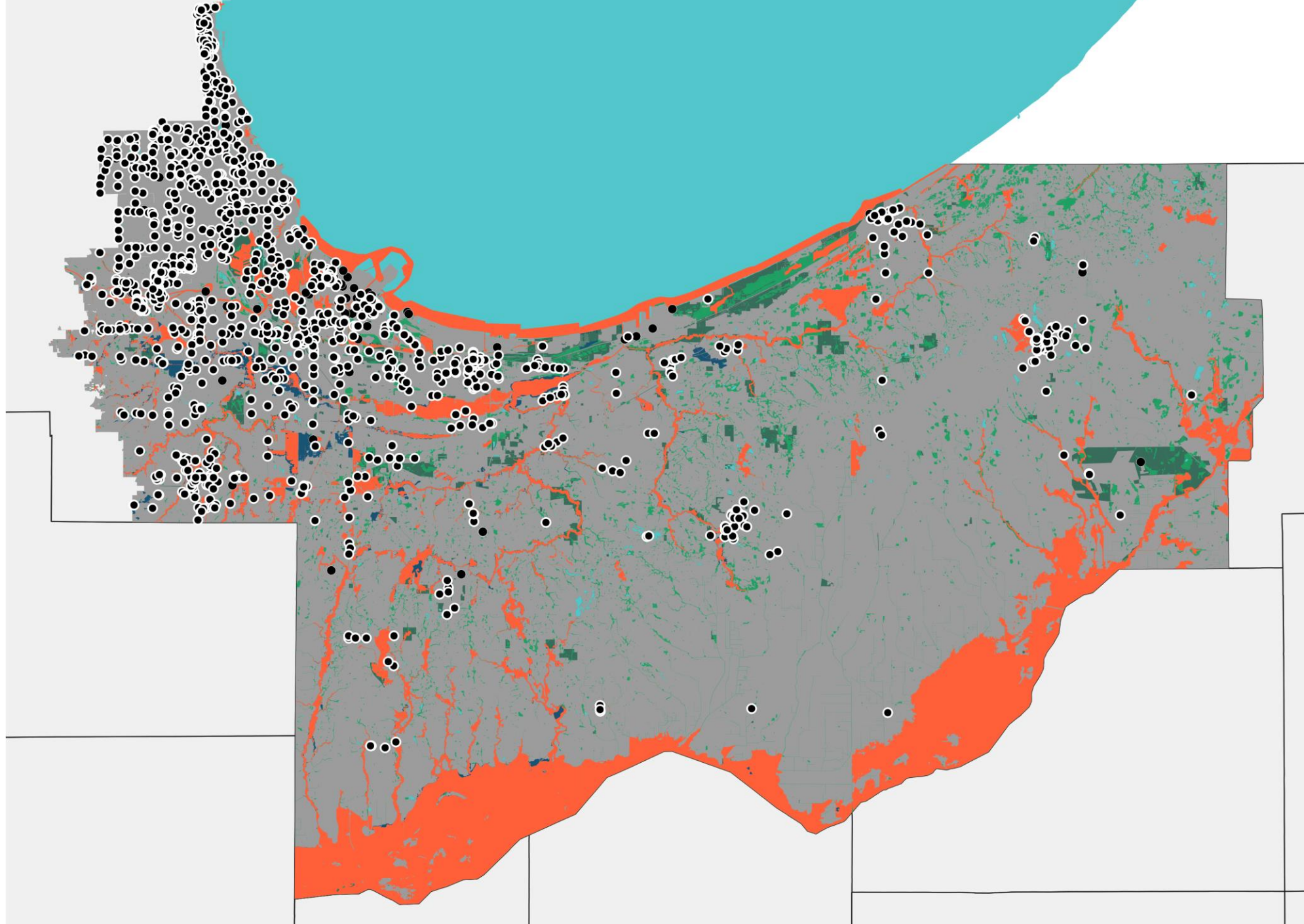
Land Use

- Agriculture
- Commercial
- Other
- Industrial
- Institutional
- Open Space
- Other
- Residential
- Utilities_Transportation
- Vacant_Agr
- Vacant
- Vacant
- Vacant
- Vacant
- Vacant
- Water



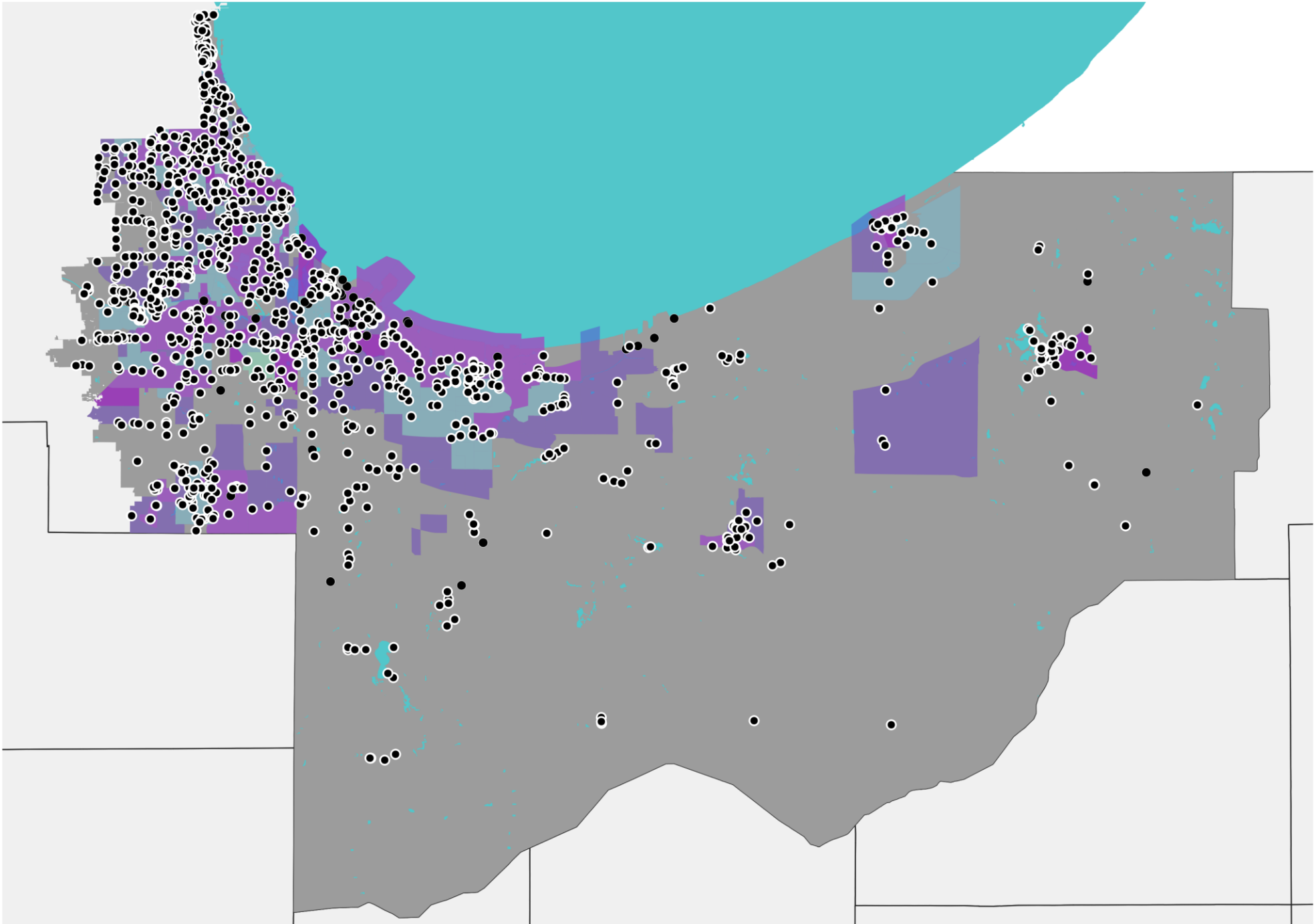
Environment

-  100YearFloodPlain
-  500YearFloodPlain
-  Wetlands
-  USGS_ProtectedAreas




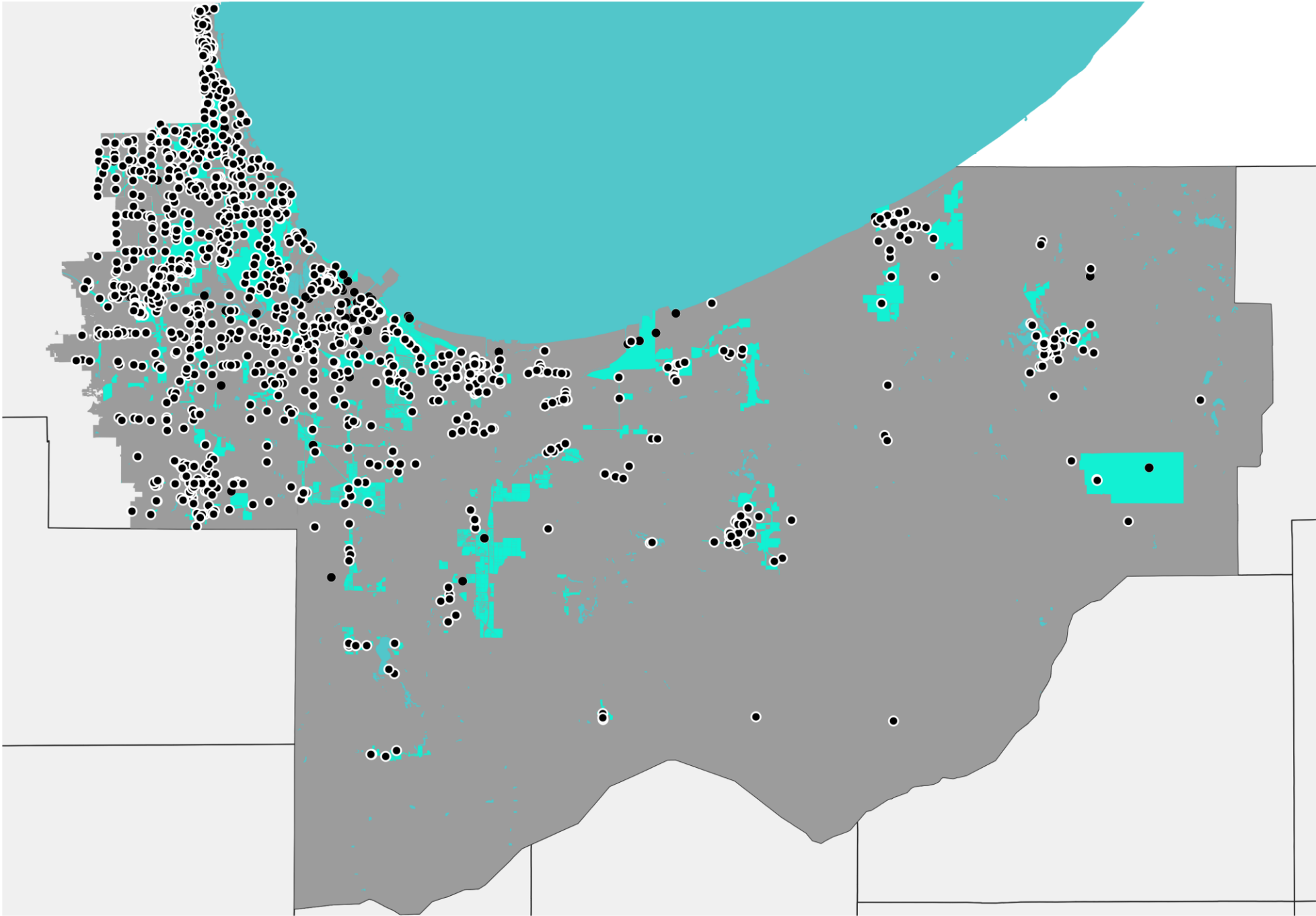
Economic Development

- OpportunityZones
- HUBZones
- NewMarketTaxCredit



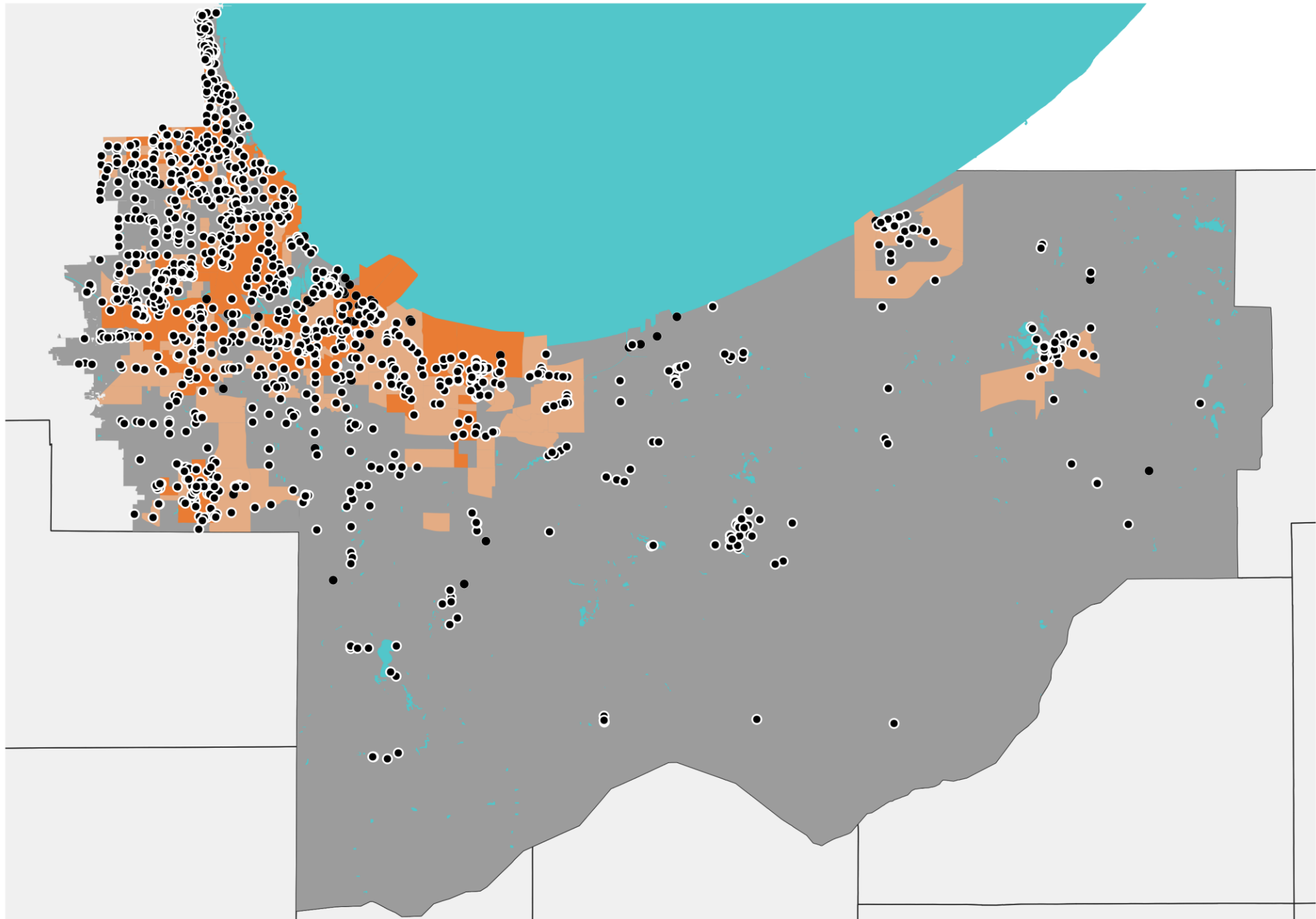
Economic Development

 *TaxIncrementFinancing*
(TIF)



Social Vulnerability Index above 0.75

(on a scale from 0 to 1)



Connect & Work with us




Sarah Coulter

Executive Director


sarah@calumetcollaborative.org

Sign up for our
e-Newsletter



How Collaboration Drives Conservation Planning

In Mid-March, Calumet Collaborative and partners embarked on a Conservation Action Planning (CAP) project for 3 areas of Northwest Indiana that were not previously covered in the Coastal and Estuarine Land Conservation Program (CELCP) Plan. A number of diverse stakeholders in the region were involved to develop comprehensive 5-year conservation strategies with actionable outcomes, along with a detailed report, in just a 5-month time period, which speaks to the power of collaboration and collective action.



[Read this article](#) to understand how collaboration and the CAP process played major roles in developing the [Calumet Land Acquisition & Habitat Restoration Report](#). You can also read summaries of each conservation area's plan: [Oak Ridge/ Hoosier Prairie](#) (Lake

Thank you!



calumetcollaborative.org



Facebook.com/calumetcollaborative



Instagram.com/calumetcollab



Twitter.com/calumetcollab