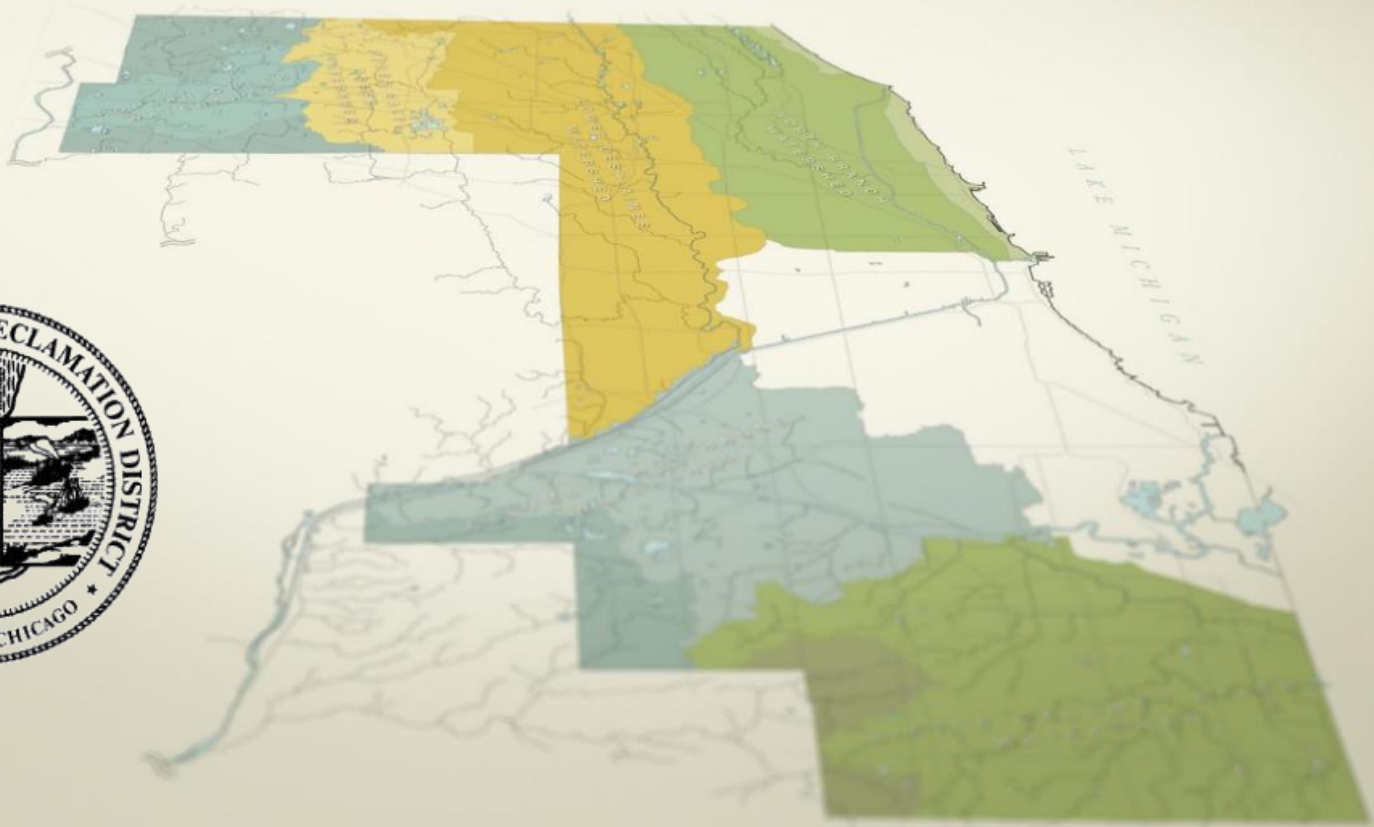


MWRD Geographical Information System Assistance



Calumet Stormwater Collaborative

January 5, 2018



WMO Article 8 – IICP

Infiltration / Inflow Control Program (IICP)

Ongoing maintenance, operation, and rehabilitation effort to identify and remove groundwater infiltration and stormwater inflow sources from the sanitary sewer system.

- IICP requires sewer system owners to have an accurate, current map of sanitary systems showing extent of service area
 - A Geographical Information System (GIS) is preferable to be used for sewer system mapping as it is more efficient to update than paper maps
 - Sewer mapping is vital for effective operation and maintenance of sewer systems
-
- All IICP information can be found at ii.mwrd.org



GIS / GPS Assistance

MWRD is offering GPS units to provide sewer system owners resources to begin mapping their sewer systems in GIS or improve their existing sewer system map.

- GPS equipment and related software at no cost
- Municipality must own or operate a sanitary sewer system that discharges directly and/or indirectly to District facilities, or own or operate a sewer system in a combined sewer area within the corporate boundaries of the District.
- Sewer system owners must enter into an Intergovernmental Agreement (IGA) with MWRD
- Owners will provide MWRD with their sanitary, storm, and combined sewer data



Leica Zeno 20 Units

- MWRD purchased six Leica Zeno 20 units
- High vertical and horizontal accuracy
- Easy to use
- ESRI ArcGIS Collector App used to collect sewer data
- MWRD provides training documents and if requested field training





GIS / GPS Update

- To be added to the list for the next available GPS unit, submit a letter of intent to Director of Engineering:

Marcella V. Landis

Acting Director of Engineering

Metropolitan Water Reclamation District of Greater Chicago

100 East Erie Street

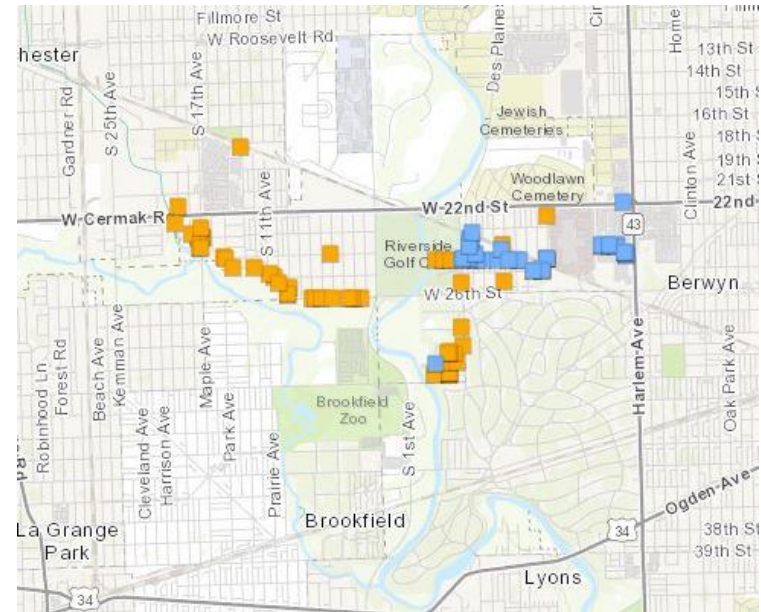
Chicago, Illinois 60611

- Template IGA and modifiable Letter of Intent on website, wmo.mwrd.org
- Changes proposed to IGA will required MWRD approval



Current Status

- In 2017, MWRD entered into IGAs with seven municipalities
- Four municipalities successfully completed data collection and have returned units
- Three municipalities are currently collecting data
- Currently, three GPS units are available for use
 - One municipality submitted a Letter of Intent
- In March 2018 two more units will become available
- Positive feedback on units





Data Collection

- Units available on a rotating schedule
- Time for data collection varies by municipality
 - Dependent on staff availability (one month to ten months)
- One municipality received a grant from AmeriCorps to provide labor
 - Data collected within one month
- Two municipalities shared one unit
 - Data collected within six months
- Reasonable time extensions may be granted based on availability of units



Questions

Contact Information:

Ann Gray, P.E.

Senior Civil Engineer

Local Sewer Systems Section

MWRDGC

111 E. Erie St., Chicago, IL 60611

(312) 751-3085

graya@mwrdd.org