

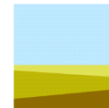


CHI-CAL RIVERS FUND

Green Stormwater Infrastructure Strategy & Priorities



CROWN FAMILY PHILANTHROPIES



GAYLORD & DOROTHY
DONNELLEY FOUNDATION

TheJoyceFoundation



NFWF

The Searle Funds
at The Chicago Community Trust





MISSION

Restore the health, vitality and accessibility of the waterways in the Chicago and Calumet region

Goals

- Enhance fish and wildlife habitat
- Reduce stormwater runoff with green stormwater infrastructure
- Improve public-use opportunities

PUBLIC-PRIVATE PARTNERSHIP

- ArcelorMittal
- BNSF Railway
- The Chicago Community Trust
- Crown Family Philanthropies
- Gaylord & Dorothy Donnelley Foundation
- The Joyce Foundation
- National Fish & Wildlife Foundation
- U.S. Environmental Protection Agency
- U.S. Fish and Wildlife Service
- U.S. Forest Service



CROWN FAMILY PHILANTHROPIES



GAYLORD & DOROTHY
DONNELLEY FOUNDATION

The Joyce Foundation



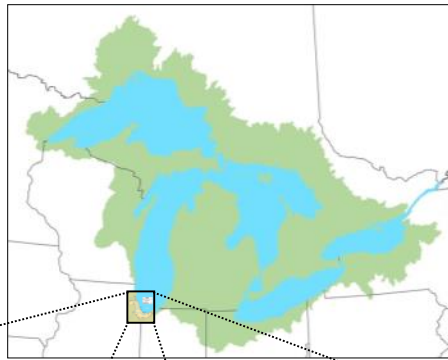
NFWF

The Searle Funds
at The Chicago Community Trust



PRIORITY GEOGRAPHY

- Hybrid of watershed and political boundaries reflecting partner interests and jurisdictions
- Focus on major system waterways
 - Chicago River and IL tributaries
 - North Shore Channel
 - Chicago Sanitary and Ship Canal
 - Bubbly Creek
 - Calumet Sag Channel
 - Calumet River
 - Grand Calumet River
 - Little Calumet River
 - Burns Ditch
 - Salt Creek
 - Lake Calumet
 - Wolf Lake



FOCAL ISSUES

- Habitat degradation
 - ✓ 60% riverbanks are riprap or vertical walls
 - ✓ Canopy cover <12% in 9 of 10 waterways
 - ✓ Mean dissolved O₂ too low for early fish life stages
- Water quality, flooding
 - ✓ 285 combined sewer overflow events since 2010
 - ✓ 7 releases of untreated stormwater/wastewater to Lake Michigan since 2010 (43 billion gallons)
- Public-use limitations
 - ✓ Waterways historically dominated by manufacturing
 - ✓ Health and safety concerns (water quality, access)



FUNDING CATEGORIES

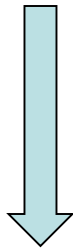
1. Green Stormwater Infrastructure
2. Habitat Enhancement
3. Public-Use Improvement

❖ Summaries of previously funded projects can be viewed at: www.nfwf.org/chi-cal



ACCOMPLISHMENTS: 2013–2016

22 grants: \$4.8 million
Grantee match: \$11.3 million
Total investment: \$16.1 million



- 4.5 million gallons stormwater storage
- 1,453 acres of habitat restoration
- 71 acres of new public green space added or improved

Locations of projects funded 2013–2016



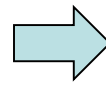
GREEN STORMWATER INFRASTRUCTURE

This category directs funding to green infrastructure projects that increase on-site stormwater capture and storage

- Install green stormwater infrastructure
 - ✓ Rain gardens, bioswales
 - ✓ Green roofs
 - ✓ Pervious surfaces
 - ✓ Other GSI solutions
- Restore urban forests
 - ✓ Plant diverse native tree species to:
 - Retain runoff
 - Moderate water temperature
 - Improve habitat
 - Increase ecosystem resiliency
- Create and enhance urban wetlands
 - ✓ Construction or improvement of wetlands in urban areas
 - ✓ Increased storage and filtration

GREEN STORMWATER INFRASTRUCTURE

- Competitive projects:
 - ✓ Occur in close proximity and/or demonstrate direct benefits to the major waterways of the system
 - ✓ Connect to a larger green infrastructure plan
 - ✓ Be of sufficient size and scope
 - ✓ **Projects must add a minimum 50,000 gallons of stormwater storage capacity annually to be competitive**



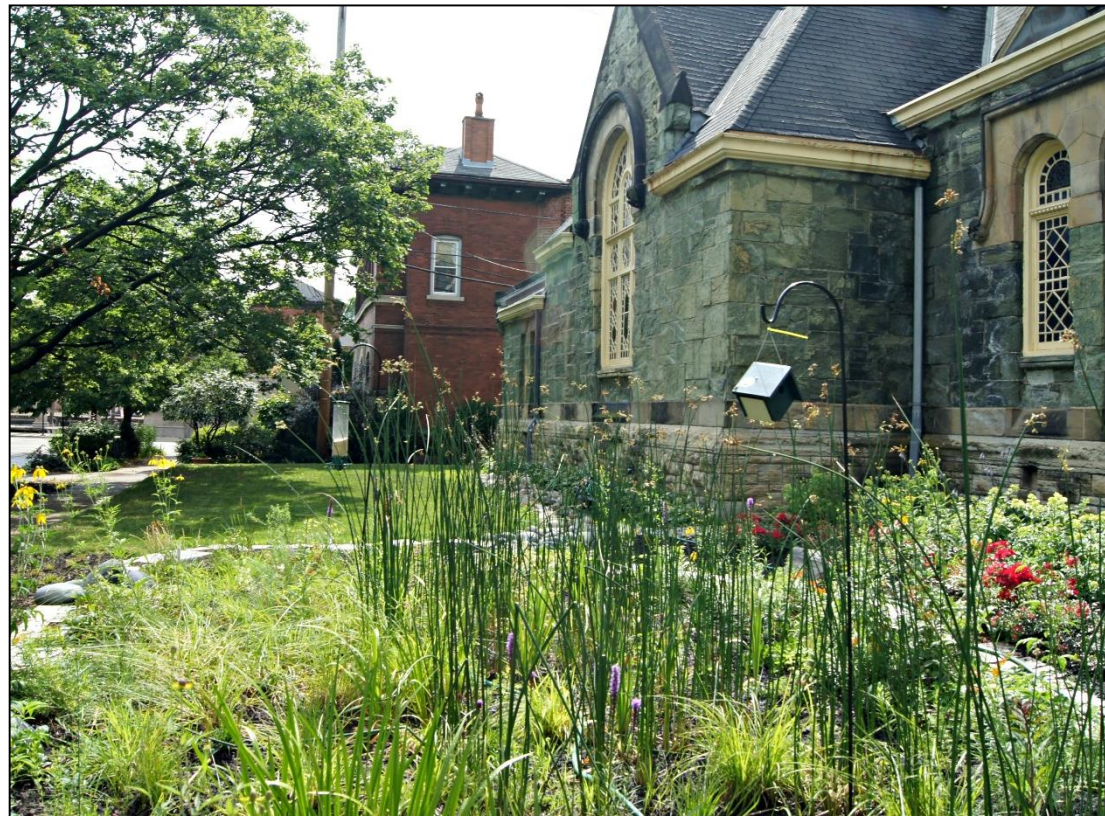
- [EPA Stormwater Calculator](#)
- [i-Tree](#)
- [National Tree Benefit Calculator](#)

GREEN INFRASTRUCTURE INVESTMENTS

11 green infrastructure projects funded totaling **\$2.6 million** in grants

Project Outcomes:

- 4.5 million gallons stormwater storage capacity added
- 401,940 square feet of green infrastructure installed
- 26,590 square feet impervious surface removed
- 71 acres of new public green space added or improved





GSI STRATEGY DISCUSSION

Interest & Need:

- *Observation: Half of the 2017 Chi-Cal Rivers Fund applications were for GSI projects*
 - *Increase from previous years*
 - *Consistent with SOGL program basin-wide*
- What barriers exist to designing and implementing GSI projects?
 - Project design support?
 - Municipal or public buy-in (making the case for GSI)?
 - Funding? For which project elements?
 - Technical assistance?
 - Long-term maintenance?

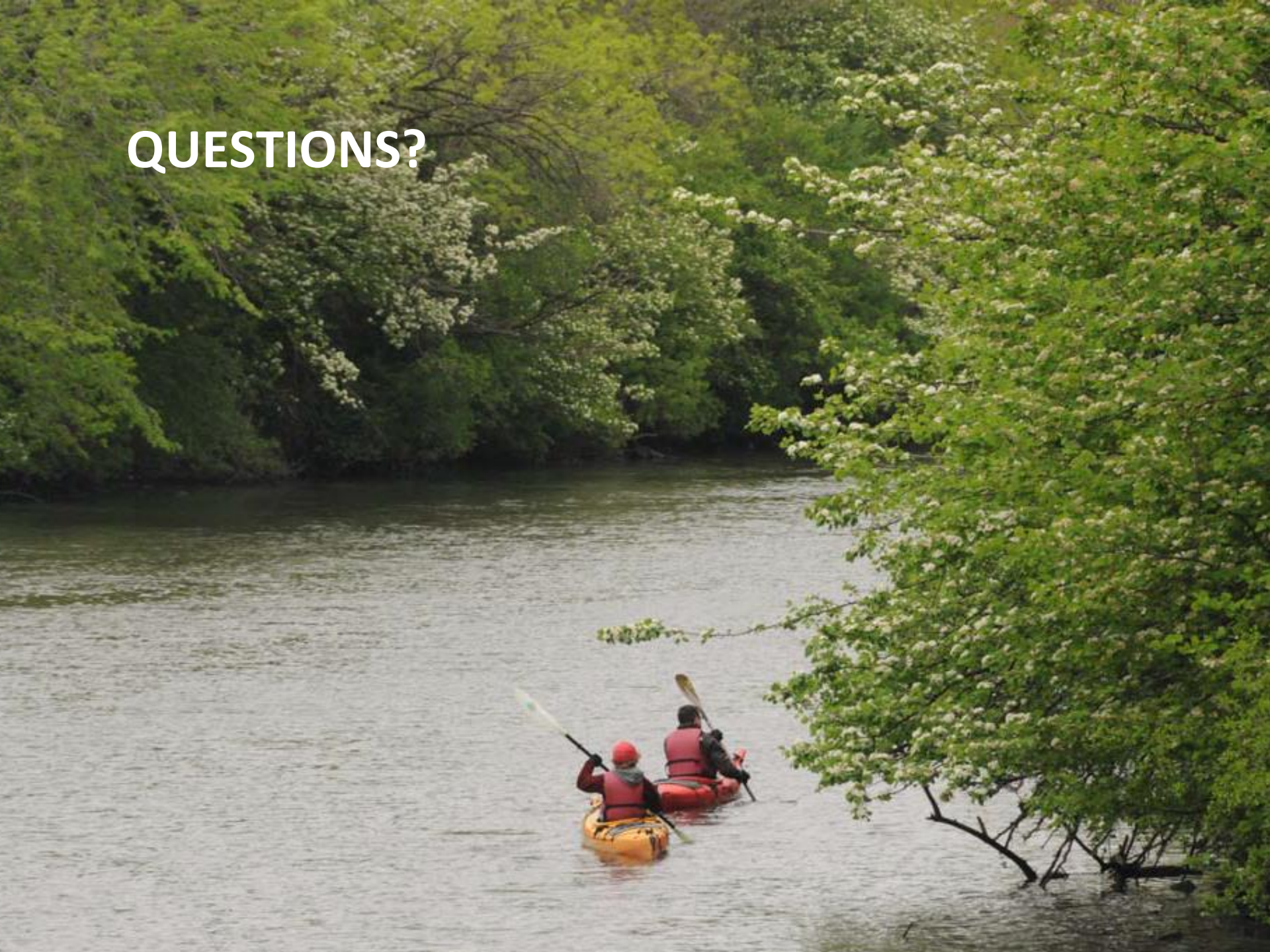


GSI STRATEGY DISCUSSION

Where are the gaps?

- *Observation: Decline in priority-aligned shovel-ready projects since 2013*
 - *Consistent with SOGL program basin-wide*
- How can the funding community help address these needs/fill the gaps?
- When developing and revising funding strategies, what would you like the Chi-Cal Rivers Fund to consider?

QUESTIONS?



CONTACT INFORMATION

Aislinn Gauchay

Director, Central Region
National Fish and Wildlife Foundation
612-564-7284
aislinn.gauchay@nfwf.org

Traci Giefer

Great Lakes Program Manager
National Fish and Wildlife Foundation
612-564-7296
traci.giefer@nfwf.org

www.nfwf.org/chi-cal

