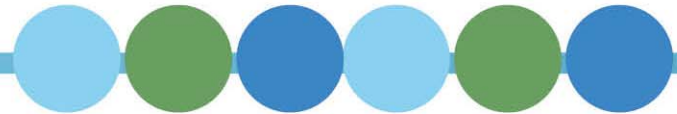


# Linking the Chicago Climate Action Plan and the Go To 2040 Plan

Regional Efforts and Key Initiatives



Suzanne Malec-McKenna

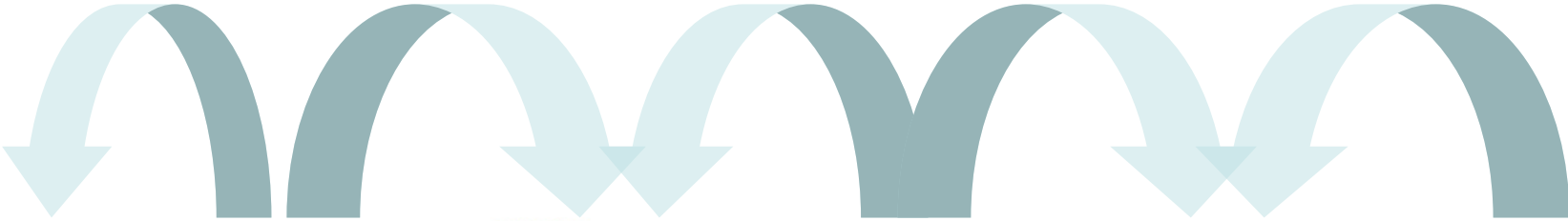
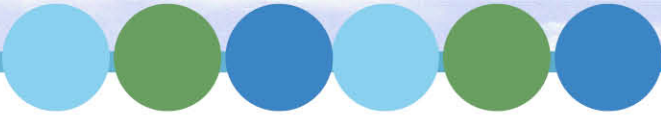
Commissioner, Chicago Department of Environment

April 26, 2011



City of Chicago  
Richard M. Daley  
Mayor

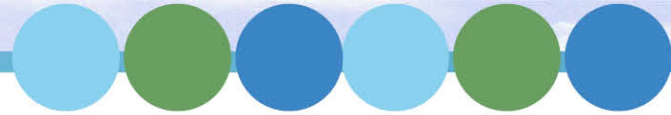
# Working together to reduce emissions



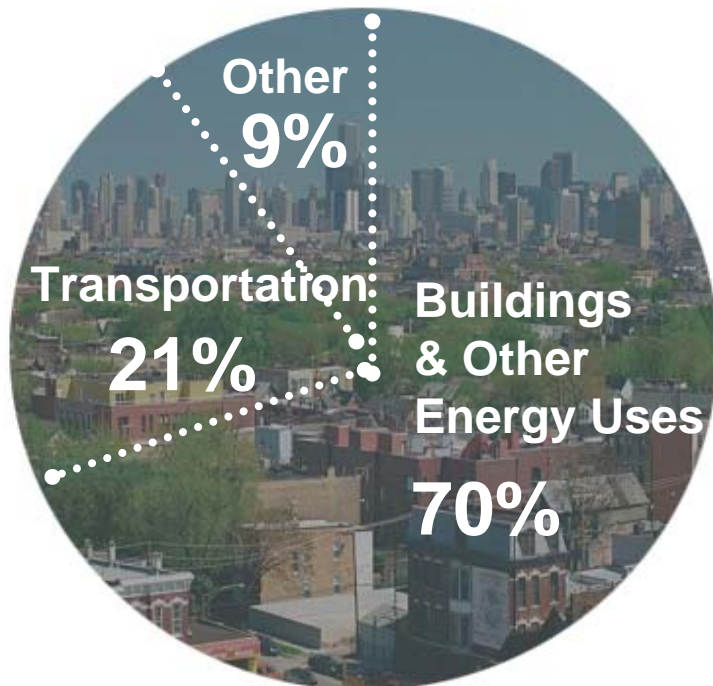
Chicago Metropolitan Agency for Planning

**GO TO 2040**  
Comprehensive Regional Plan

# Year 2000 greenhouse gas emissions

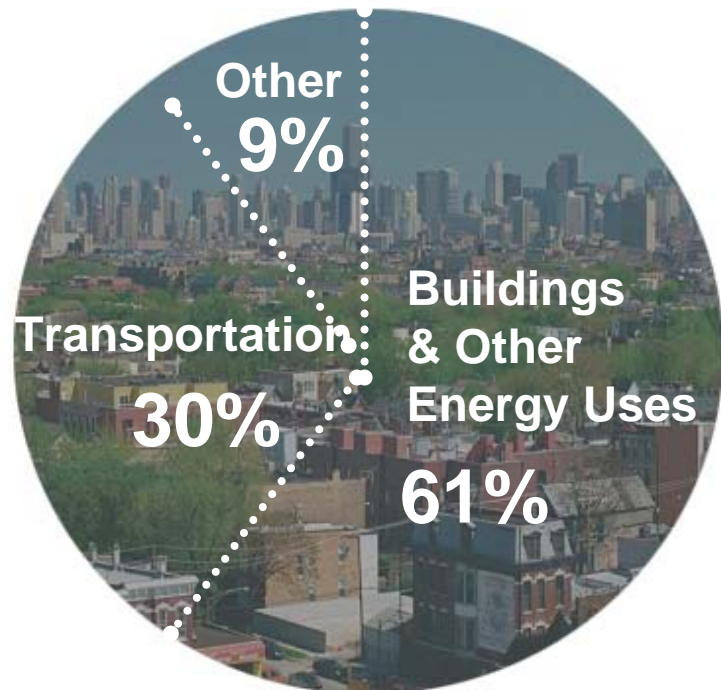


34.6 MMTCO<sub>2</sub>e



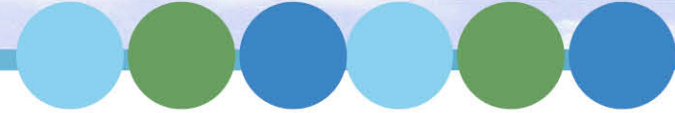
Chicago

105.1 MMTCO<sub>2</sub>e



6-County

# Key Elements



## CCAP

### Energy Efficient Buildings

400,000+ homes

9,200+ commercial/industrial bldgs

### Clean & Renewable Energy Sources

Financing

Distributed Generation

Marquis Projects

### Improved Transportation Options

Electric vehicles

Commuter trip reduction

### Reduced Waste & Industrial Pollution

Refrigerants

Paper

### Adaptation

Human, built infrastructure and ecosystems

## Go To 2040

### Livable Communities

Land Use and Housing

Water and Energy Resources

### Human Capital

Improve Education and Workforce Development

Support Economic Innovation

### Efficient Governance

Improve Access to Information

Pursue Coordinated Investments

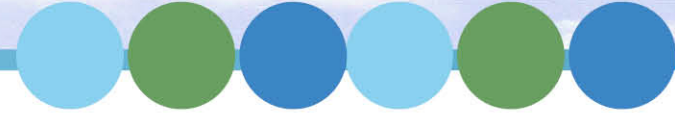
### Regional Mobility

Invest Strategically in Transportation

Increase Commitment to Public Transit

Create a More Efficient Freight Network

# Key intersections between CCAP and Go To 2040

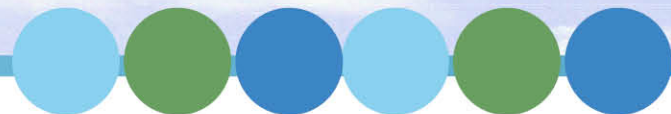


Chicago's Regional Retrofit Strategy

Transportation Committee

2010 Emissions Inventory

# Thank You



[www.chicagoclimateaction.org](http://www.chicagoclimateaction.org)

[www.cmap.illinois.gov/2040/main](http://www.cmap.illinois.gov/2040/main)

 [Facebook.com/chicagoclimate](https://www.facebook.com/chicagoclimate)

 [Facebook.com/GOTO2040](https://www.facebook.com/GOTO2040)

 [Twitter.com/chicagoclimate](https://twitter.com/chicagoclimate)

 [Twitter.com/GOTO2040](https://twitter.com/GOTO2040)