



**Notes From the Field: Green Stormwater
Infrastructure Maintenance and Training in the
Calumet Region**

Kara Riggio, OAI

Danielle Gallet, Waterwell/OAI

Zach Wirtz, Chicago Region Trees Initiative

Agenda

- Service Sharing and Maintenance Program
- Robbins Stormwater Park Project
- Trees as a GSI strategy
- Key Lessons Learned



OAI's Approach to Service Sharing to Maintain GSI

High autonomy ← → Low autonomy

Informal Agreements	Service Contracts	Interlocal Agreements	Consolidation	Regionalization
<ul style="list-style-type: none"> · Verbal or hand-shake agreements · MOUs · Sharing information · Sharing equipment · Coordination 	<ul style="list-style-type: none"> · Another govt provides · Sharing facilities · Joint Ownership · Mutual Aid (MAAs) · Inter-state compacts 	<ul style="list-style-type: none"> · Joint powers & authority · Functional consolidation (merged dept) · Special districts · Regional districts · COGs · Shared purchasing 	<ul style="list-style-type: none"> · City/County mergers · Annexation 	<ul style="list-style-type: none"> · Merger across county lines · Merger across state lines

Simple ← → Complex

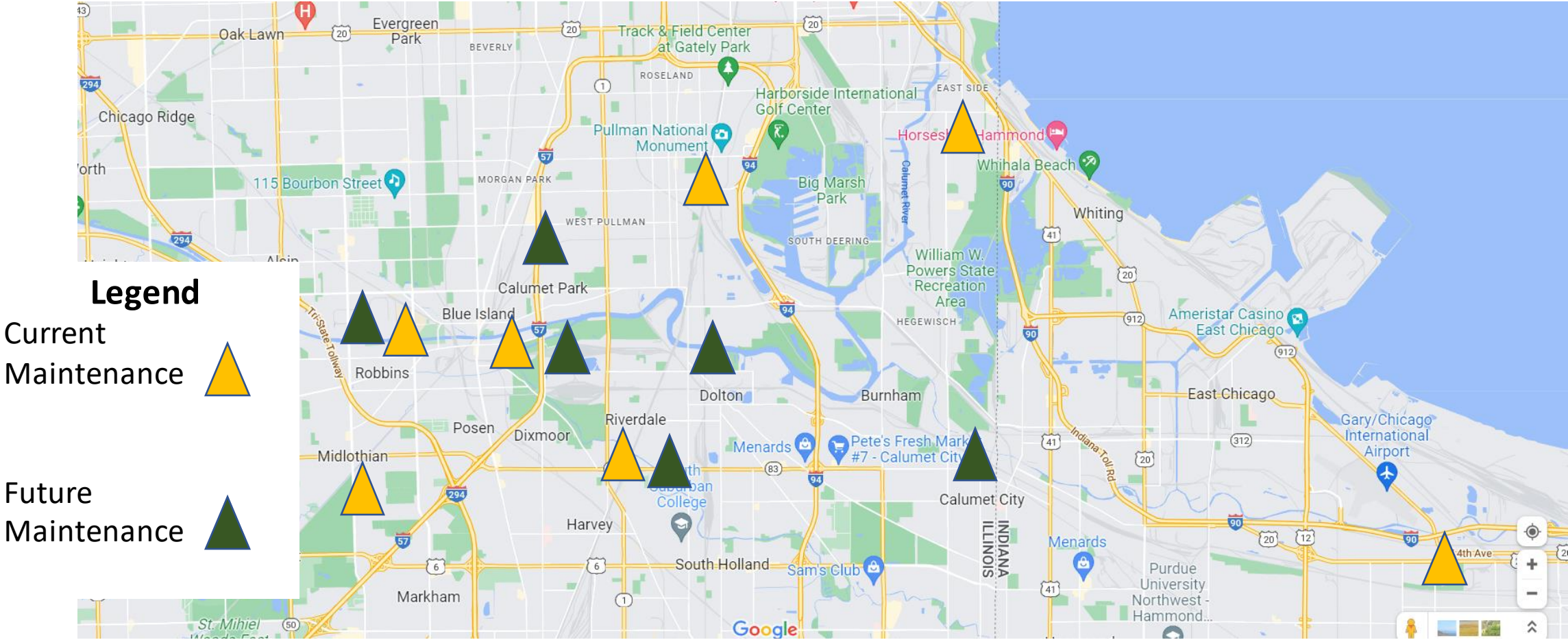


Joint Procurement | Single Contract | Better Maintenance

- Geographic clustering
- High quality maintenance
- Request for Qualifications seeking a project partner
- Professional Services Agreement
- Access and Indemnification Agreements



Current and future maintenance areas



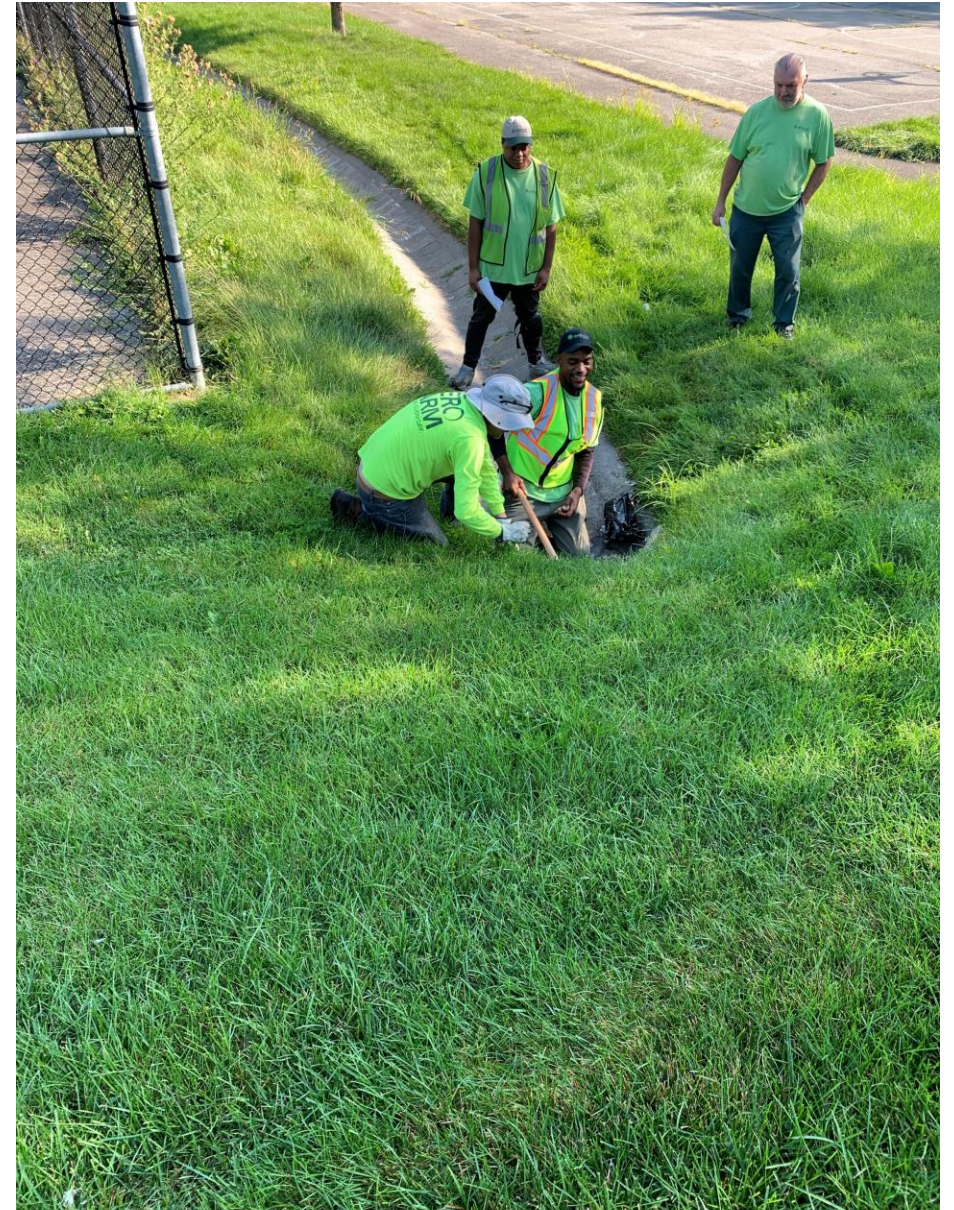
Training and Maintenance with Chicago Region Trees Initiative and CSC partners

- Annual regional ½ day training since 2020
- Training and content development: OAI, Chicago Region Trees Initiative, MWRD, National Green Infrastructure Certificate Program, Illinois Dept. Of Natural Resources, Cardno
- On-site, hands on



Training and Maintenance with Chicago Region Trees Initiative and CSC partners

- Training participation is growing
 - 170 since 2020
 - Greencorps Chicago, A Safe Haven
 - Dept. Of Public Works, Park District Staff,
 - Engineers, planners, job seekers, community volunteers
- Piloting on-site technical assistance
 - Space to Grow/A Safe Haven
 - Chicago Public Schools
- OAI provides financial and staff support to Greencorps Chicago



Maintenance Videos

- Native plant/invasive identification
- Maintenance through the seasons
- Infiltration and flow
- Tree Care
- General GSI & importance of maintenance
- oaiinc.org/high-bridge



Program growth opportunities



- Maintenance partner for CNT's Rain Ready implementation
 - Blue Island, Calumet City, Dolton, Riverdale, Calumet Park, Robbins
 - \$6million GSI investment in Calumet Communities
 - Support training and maintenance through 2026
- Adding on-site technical assistance
- Adding maintenance and training at newly installed Pekny Park in Riverdale (CNT and TNC/MPC-led initiative)



Robbins Stormwater Park Project

Site + Design Information

2 Phases:

- Phase 1 involves establishing a diversion channel to the Cal-Sag
- Phase 2 involves constructing a stormwater park & pond, and conveyance improvements along Midlothian Creek



Goals of the Project

From <5-year to a
100-year storm
level of service

Remove 140 acres
from the
floodplain

Protect 92
structures

More than 1,300
parcels out of 100-
year floodplain

Park-like aesthetic
and usability

Amenity for the
community

OAI's Role

Phase 1

- Native Planting + Establishment
- Local GSI Training + Maintenance



Project Timeline

- Began: August 2022
- Phase 1 Planting: late Spring/early Summer
- Full project complete: 2024



What we are learning



Maintenance challenges are persistent, but not pervasive



Geographic clustering, high-quality and consistent maintenance leads to efficiency and more sites maintained



Center community in design and plant selection

In planning new sites, begin with the end in mind



Think beyond education when planning new sites



Project budgets should include five years of maintenance immediately following installation and high-quality signage



Don't know the scale/scope of the maintenance problem



Funding cycles vs. plant cycles vs. municipal schedules



Don't forget the trees!

Questions

Thank you!

Kara Riggio kriggio@oaiinc.org

Danielle Gallet dgallet@oaiinc.org | danielle@bewaterwell.com

Zach Wirtz zwirtz@mortonarb.org