



CHICAGO
REGION
TREES
INITIATIVE

Our Trees.
Our Communities.
Our Future.

Trees in Green Stormwater Infrastructure

CHICAGO REGION FOREST FEATURES

TOTALS

Number of trees	Chicago	3,997,000	172,297,000
	Seven-County Region	168,300,000	
Tree and shrub canopy cover (i-Tree canopy)	Chicago	16%	23%
	Seven-County Region	26%	

Avoided runoff
(cubic feet/year)

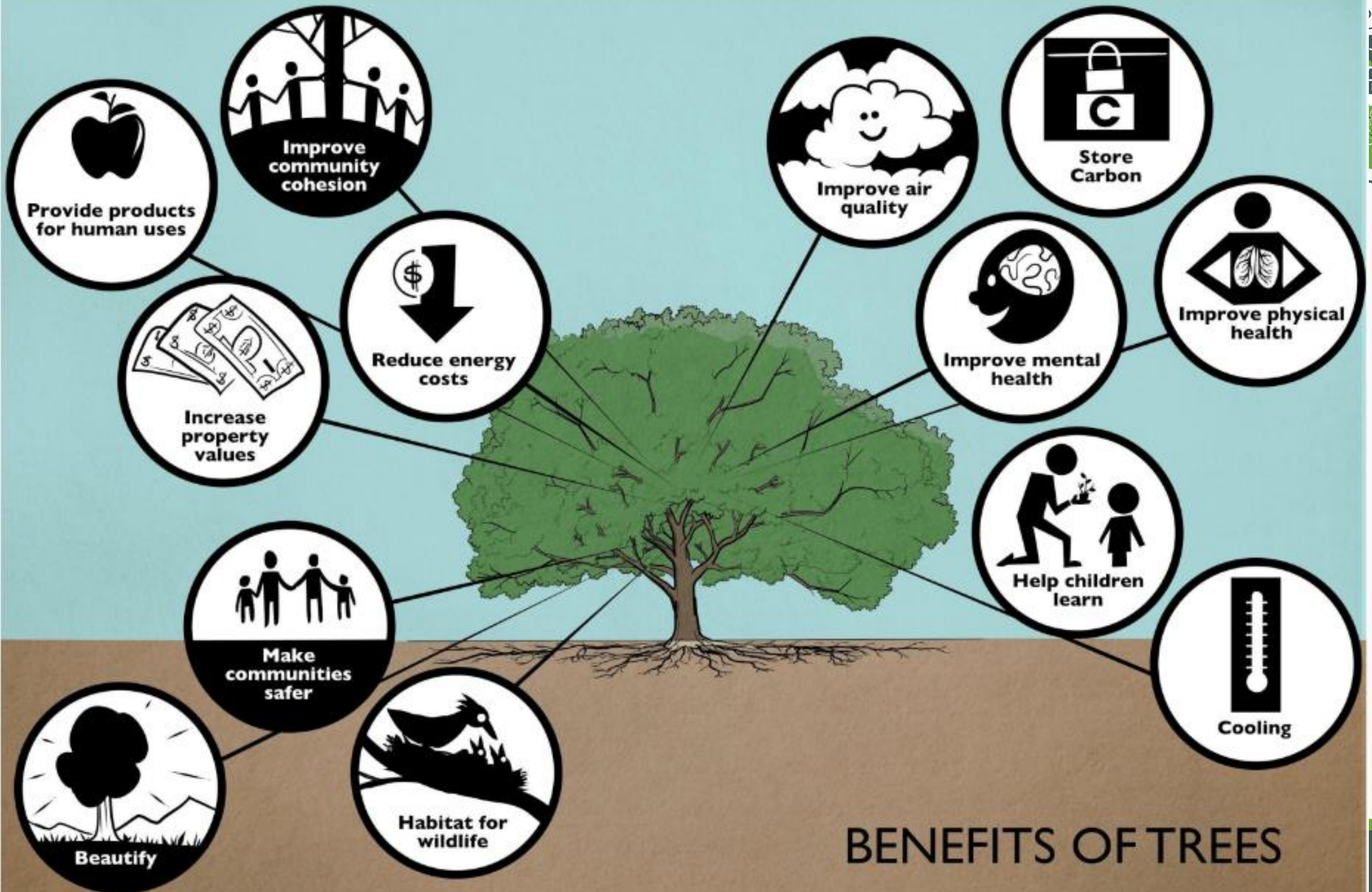
Chicago	65,000,000
Seven-County Region	1,425,000,000

1,490,000,000

Avoided runoff (\$/year)

Chicago	\$4,350,000
Seven-County Region	\$95,300,000

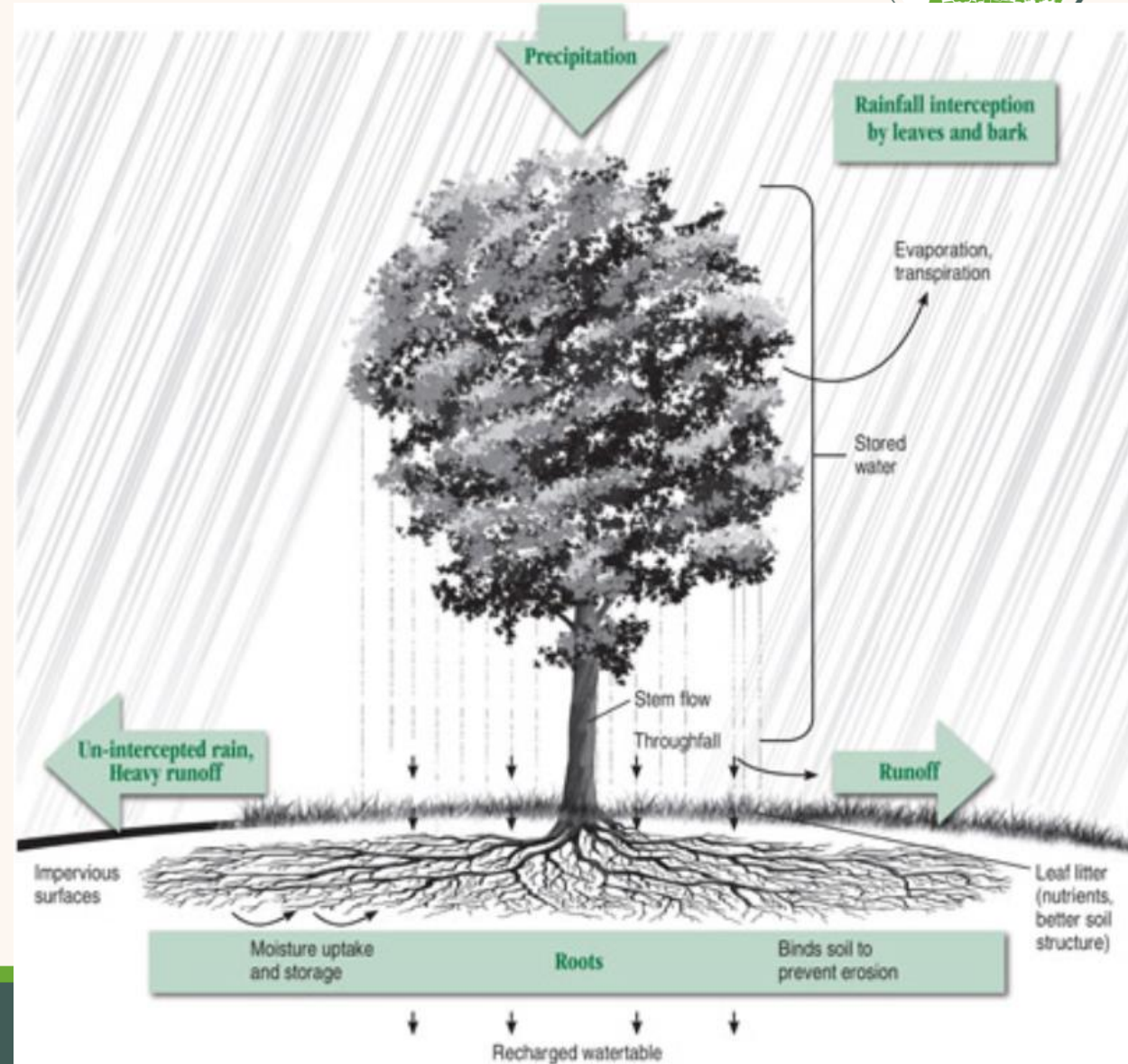
\$99,650,000



BENEFITS OF TREES

Trees and Stormwater

- Trees treat water pollution
- Trees help handle storm runoff and reduce flooding.

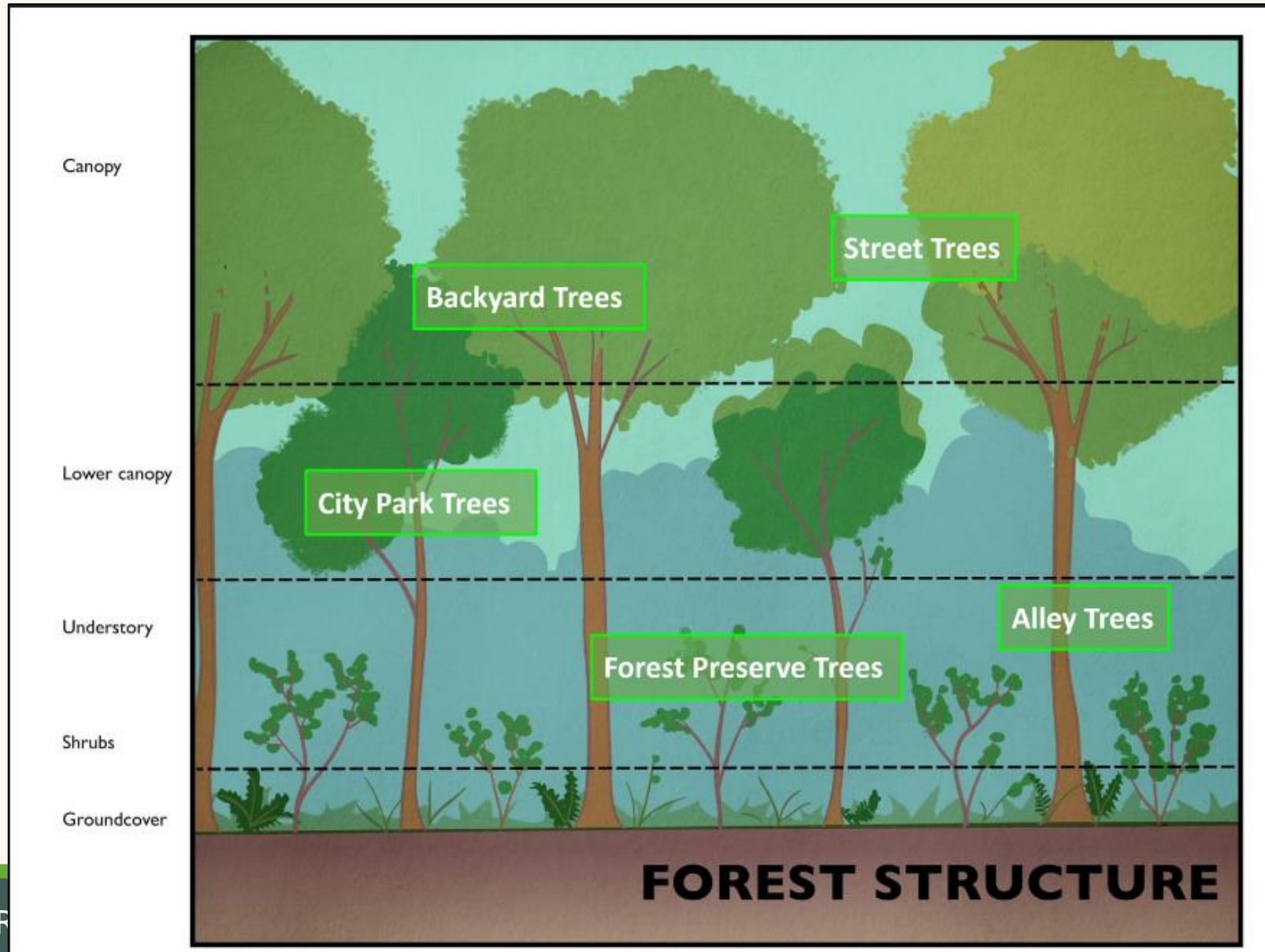




Key Findings of Modeling Cities in the PNW

- Replacing existing canopy with anything else increases runoff
- Increasing canopy cover over impervious surfaces reduces runoff
- Development that retains trees causes smaller increases in runoff
- Large, mature canopy cannot be quickly replaced, and large trees reduce more runoff

Adding Trees to Your GSI











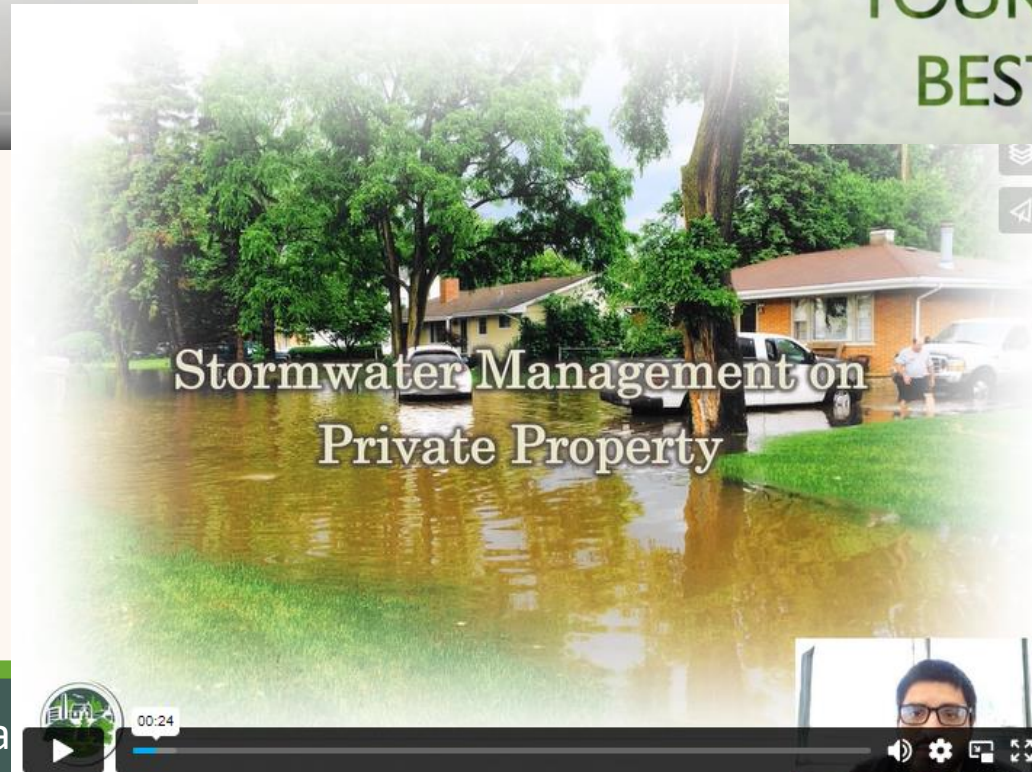


Tree Management Considerations

- Right Tree in the Right Place – Planted the right way!
- Establishment Period – *around* 1 year / inch at planting
- Young Tree Pruning => Less pruning later in life
 - Tree pruning is “art and science”



Resources: Videos

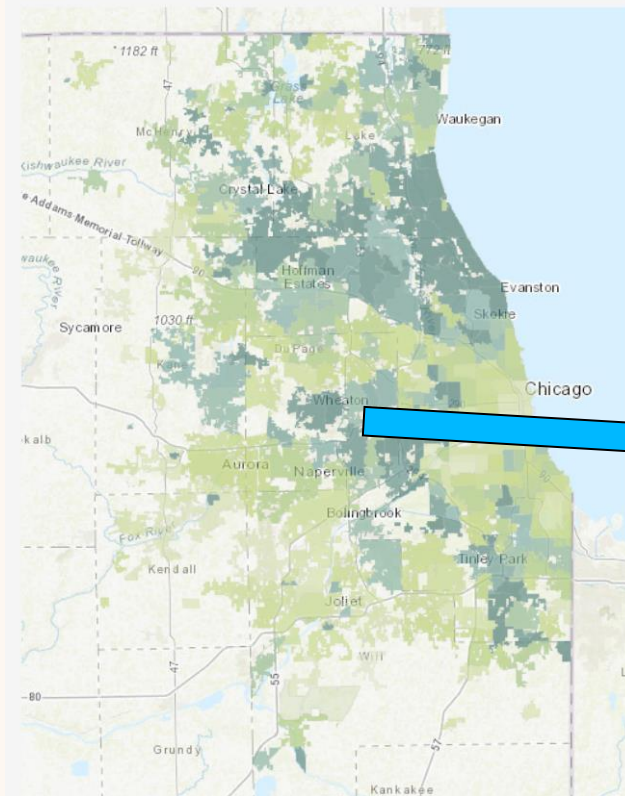


chicagorti.org/program/tree-risk-toolkit/

<https://chicagorti.org/program/homeowner-hub>

Resources: Municipal Canopy Summaries

Interactive Canopy Map



(1 of 3) ▶ □ ×

Community	Lombard
Forest summary	More info
Canopy coverage	26%
Impervious surfaces	36%
Annual benefits	\$1,074,990
Carbon stored	\$4,486,855

🔍 Zoom to

<https://chicagorti.org/maps/municipal-canopy-summaries/>



Additional Trees and Stormwater Resources

- Chicago Region Trees Initiative
 - <https://ChicagoRTI.org>
- Tree and Stormwater Handbook – Puget Sound
 - <https://betterground.org/urban-forests/>
 - https://betterground.org/wp-content/uploads/2021/10/PugetSoundTreeCanopy_web.pdf
- EPA
 - <https://www.epa.gov/soakuptherain/soak-rain-trees-help-reduce-runoff>