

# CALUMET STORMWATER COLLABORATIVE

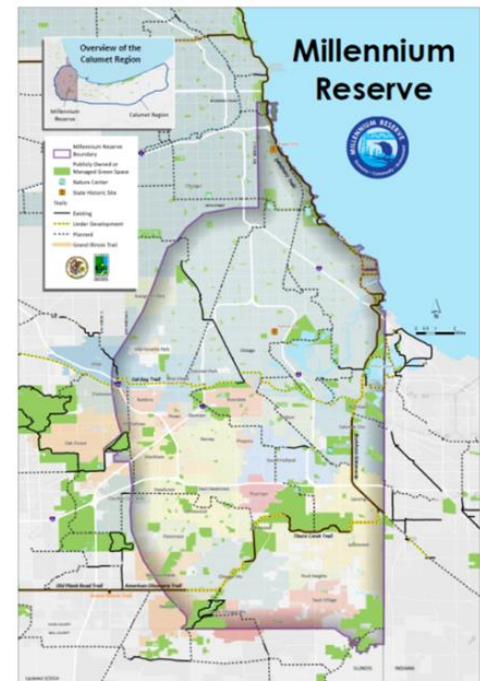
## 2016-2017 WORK PLAN



### Who we are.

The Calumet Stormwater Collaborative was formed in 2014 to pursue the Millennium Reserve priority to “Improve stormwater management through Investments in and coordination of green infrastructure solutions.” [Read more about this Millennium Reserve priority and others here.](#) The negative impacts of precipitation, or “stormwater,” in the Calumet region and southeast Chicago lakefront, from flooding to poor water quality, result from historic land use decisions, declining infrastructure sufficiency and increasingly severe storms. Thus the negative impacts are largely an issue of management, rather than the “fault” of the precipitate itself, and these impacts work at a larger scale than the scope or jurisdiction of any one organization or agency. Systemic change necessitates solutions at the scale of the problem.

However coordination between governments is a fundamental challenge to managing stormwater in any geography, be it a watershed or manmade sewershed. Government units have different regulatory and political pressures with varying financial and technical capacities—absent coordination—inconsistent goals, processes and investments will persist. Other non-government actors also manage land, provide financing tools and assist with on-the-ground solutions, all of whom are just as much a piece of the puzzle. In the Millennium Reserve area—Illinois’ portion of the Calumet Region and parts of the Illinois Lake Michigan coast ([see map](#))—the Calumet Stormwater Collaborative (also known as the Collaborative) serves to provide the appropriate scale, structure and tools necessary to facilitate ongoing coordination.



The Collaborative was convened and is facilitated by the Metropolitan Planning Council (MPC) with funding from The Chicago Community Trust, Grand Victoria Foundation, Joyce Foundation and Prince Charitable Trusts, and is comprised of the key stakeholders controlling land, managing infrastructure, providing financing tools, holding regulatory powers and working on solutions in the region related to stormwater. Stakeholders throughout the Millennium Reserve have identified a wide range of different stormwater management goals, strategies and tactics. The one universal and consistent desire has been for better communication and coordination. That is the core purpose of the Calumet Stormwater Collaborative. The Collaborative addresses three central problems:

1. Stormwater overwhelms current infrastructure;
2. Green infrastructure’s role in stormwater management is still taking shape; and

3. Coordinated action between government units and other stakeholders controlling land, infrastructure, financing tools and regulatory powers is necessary to solve systemic problems in systemic ways.

The Collaborative aims to foster awareness of the many ongoing stormwater management initiatives in the Calumet region, forge a shared understanding of terms, establish common goals and identify opportunities to align existing projects (or develop new ones) toward those goals. There are many agencies working in the Calumet Region, and the purpose of the Collaborative is to help further support and leverage their projects and activities for maximum beneficial impact, not to impede or interfere with the good work already being done. Following are the guiding principles of the Calumet Stormwater Collaborative.

### **Mission Statement**

*The mission statement articulates the current purpose of the collaboration.*

The Calumet Stormwater Collaborative builds intergovernmental and cross-sector partnerships to increase the effectiveness of stormwater management initiatives for the communities and ecosystems of the Calumet region through knowledge sharing, coordination and deployment of interventions at appropriate scales.

### **Vision Statement**

*The vision statement expresses the desired end-state and is best presented in the future tense.*

The Calumet Stormwater Collaborative will be a model of coordinated deployment of knowledge, technology and financial resources to minimize the negative impacts of precipitation and maximize the positive to make the Calumet region a better place to live, work and recreate.

### **Organizational Principles**

- Uphold the Millennium Reserve mission to integrate economy, community and environment.
- The universe of stormwater solutions includes infrastructural and non-infrastructural options, "grey" and "green," and likely things we haven't thought of yet.
- If we are not improving stormwater management first and foremost, we are not doing our job.
- We will work together to understand causes, barriers, opportunities and desired outcomes. We will work to figure what is happening, what is not, why, and what we need to do about it together.
- The Collaborative should focus on collaborative actions which cannot succeed without participation from multiple parties, including enhancing current activities to have greater impact.

### **Fundamental Challenges**

Through the course of facilitated dialogue, the Collaborative identified the following fundamental challenges as those that they, collectively, can make an impact on today, and that but for the intervention of the Collaborative, would not get solved:

- Causes and consequences of non-overbank flooding
- Declining performance and sufficiency of grey and green infrastructure over time
- Drain on public and private resources from repeated ineffective and partial interventions

## Operational Ground Rules

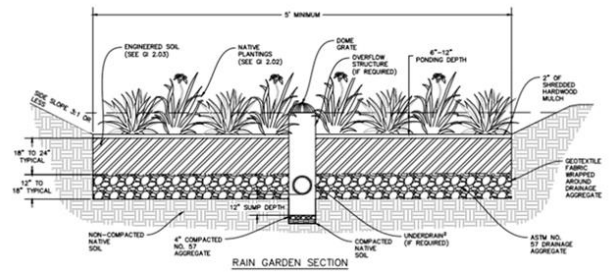
- Listen to each other, respect each other's perspectives, and respect each other's time.
- Engage in honest, transparent, thorough and concise internal and external communications.
- Share all relevant information. Ask questions. Do not assume everyone knows what you know or believes what you believe. Explain and inquire as first options.
- All members are expected to participate in all phases of the process.
- You are a conduit to and from the leadership and membership of your organization.
- Be open to abstract thinking, and be willing to think outside your current priorities.
- Respect organizational drivers outside the scope of stormwater management

## Where we have been.

The Calumet Stormwater Collaborative created and released its first work plan in June of 2015. This document formalized the organizing principles of the Collaborative (as outlined above) and featured its intended actions and initiatives during the first full-year of existence. Developing a work plan for the Collaborative was a core component of the facilitation work led by the Metropolitan Planning Council, with support from Foresight Design Initiative, and all action items were vetted and approved by the Collaborative. To view the year one Calumet Stormwater Collaborative work plan in detail, please click [here](#).

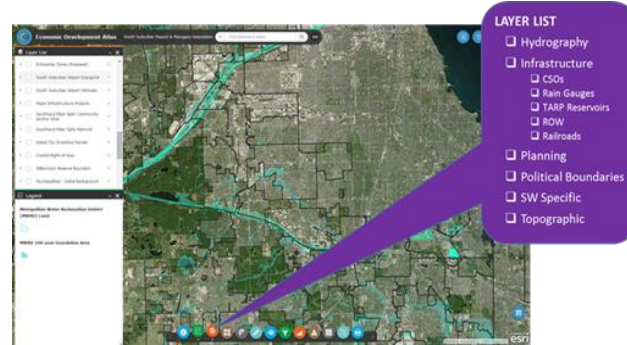
The work plan contained a number of initiatives, many of which were accomplished, or saw great progress in 2015-2016. Those accomplishments include:

- The development and release of [free, engineered design templates for green infrastructure](#) by Delta Institute;
- Completion of the nation's first [RainReady Plan for the Village of Midlothian](#) by the Center for Neighborhood Technology;
- A grant application submittal to the Environmental Protection Agency for watershed plan improvements for 319 funding by MPC;
- The completion of a logic model for the installation, troubleshooting, maintenance and training of green infrastructure by the Illinois Indiana Sea Grant Program and OAI/Highbridge;
- A panel session at WEFTEC featuring the Collaborative and its various members, along with a tour of the Calumet Region for over 40 conference participants to view four different green infrastructure and community engagement sites;



This diagram of a rain garden from the templates explains all the intricate pieces that go into a successful green infrastructure installation. Guidon Design and Delta Institute

- Ongoing development of three new data sharing and usability efforts by the Data & Modeling work group led by CH2M, which includes:
  - A Stormwater Regional Mapping Viewer
  - A Modeling Extents Data Layer
  - A Data Sharing Portal



In order to stay organized and accomplish the 2015-2016 goals and initiatives, a structure was created. This structure included regular monthly meetings of the full Collaborative membership. These meetings regularly had at least 40 people or more in attendance. Additionally, seven work groups were formed in order to carry out the agreed upon initiatives. These work groups were organized and led by various members and agencies involved in the Collaborative. For a list of the work groups, initiatives and accomplishments in 2015-2016, please see Appendix B.

## Where we are headed.

Having had a productive year, the Metropolitan Planning Council, along with the assistance of Foresight Design, established a work planning process for the Collaborative to guide the development of a subsequent year work plan. The intention for the 2016-2017 work plan was to create an increased balance in focus between the value of the Calumet Stormwater Collaborative to its members, and the beneficial impact of the Collaborative to the communities it serves. This work planning process took place during the first quarter of 2016, and was designed to engage participants in a robust work planning process.



The work planning process entailed an engaged strategy of identifying the value and desired impacts of new and existing initiatives, and ironing out any structural or logistical adjustment to the Collaborative in order to achieve success in the coming year. This approach was driven by the desire to provide an improved balance between the value of the Collaborative to its members, and the impact of this partnership for communities in the Calumet region.

## The value of the Collaborative as stated by participants

- Better understanding of where there is need in the region;
- Opportunity to learn more about ongoing efforts;
- Increased knowledge of agency roles and available resources;
- Connecting with potential collaborators, clients, and funders;
- Strengthening existing relationships;
- Building a collective knowledge base on issues;
- Inspiring innovation and new ideas;
- Provides platform for increased partnership efforts and approaches;
- Serves as an important model for regional collaboration.

Based on this robust work planning process, the Collaborative has set new initiatives (or recommitted to existing initiatives) that align with our mission statement, and has reconfigured its work groups to support those initiatives. This includes a restructuring of work groups from seven in the first year to four, which will improve effectiveness and facilitation. Following are the four work groups of the Collaborative as we move into our second work plan. For more information about the work groups and their respective initiatives, please see Appendix A.

### *Data & Modeling*

Impact Statement: Access to stormwater data and feasible monitoring approaches in order to improve knowledge sharing and decision making across the region.

### *Education & Engagement*

Impact Statement: Millennium Reserve region (regional agencies, local governments, community-based groups and residents) is actively engaged and working to identify hot spots, increase awareness about flooding issues, determine effective strategies and find necessary resources for managing stormwater.

### *Planning & Policy*

Impact Statement: Effective planning is utilized to support and ensure the integration of stormwater BMPs into future comprehensive and capital plans and projects; while policies are developed and advanced to realize the improved management of stormwater.

### *Training & Maintenance*

Impact Statement: Advance standardization of training for installation and maintenance of green infrastructure to improve its effectiveness overtime.

In order to further support the work groups, the Collaborative also reconfigured its meeting structure. While we continue to meet every month, the meeting structure will switch every other month between a traditional meeting and a work group-led meeting format. This will ensure a continued support structure for the work groups and the opportunity for all Collaborative participants to be kept informed about the progress of these groups.

**CSC Large Group Meetings**

**May**

**July**

**September**

**November**

**CSC Work Group Focused Meetings**

**June**

**August**

**October**

**December**

---

# CALUMET STORMWATER COLLABORATIVE – APPENDIX A



## 2016-2017 WORK GROUPS & INITIATIVES

Following is a snapshot of the work groups of the Calumet Stormwater Collaborative, and their respective initiatives for the 2016-2017 work plan. The beneficial impacts of the Collaborative are accomplished within these active working groups, which focus on initiatives that would not occur but for the existence of this coordinated and collaborative planning effort.

### Data and Modeling Work Group

**Work Group Lead(s):** Mason Throneburg (CH2M)

**Work Group Purpose:** The Data and Modeling work group focuses on how models, tools and data can be developed, shared and applied to support the overall objectives of the Collaborative. This work group focuses on connections between systems (e.g., surface and sub-surface systems, community systems and regional interceptors and/or tunnel systems) that may exceed the purview of any one agency or community. The working group facilitates stormwater planning informed by its system-wide context, as well as developing a technical basis for the prioritization and selection of stormwater solutions.

**Work Group 2016 Impact Statement:** Facilitate access to stormwater data and feasible monitoring approaches in order to improve knowledge sharing and decision making across the region.

**Initiatives:**

- Produce a stormwater regional mapping viewer.
- Develop a modeling extents data layer, which is a GIS shapefile demonstrating geographies for which stormwater modeling has already occurred.
- Continue work on a data sharing portal, which will be available through the South Suburban Mayors and Managers Association's open data portal.
- Act as a resource for the Collaborative.
- Expand the systemic gap analysis performed in early 2015 (to ascertain what tools are currently in use, and to offer recommendations on building a more cohesive system to optimize public investments) to new Collaborative members and the other work groups.

### Education and Engagement Work Group

**Work Group Lead(s):** Molly Oshun (CNT), Lisa Cotner (IDNR) and Melissa Custic (The Morton Arboretum)

**Work Group Purpose:** Increase local capacity to address stormwater challenges in the Calumet through practical education of residents, agencies, organizations and landowners.

**Work Group 2016 Impact Statement:** The Education and Engagement work group will actively engage the residents, agencies, organizations and land owners of the Millennium Reserve to identify priority areas and determine effective strategies to meet stormwater and green infrastructure needs with Collaborative resources. We will also work with residents to raise public awareness of the challenges and opportunities for improved on-site stormwater management.

**Initiatives:**

- Engage 6 new community groups and/or local government officials regularly in the Collaborative process.
- Leverage the social media bandwidth of Collaborative E&E members to share success stories from the MR region and pause to celebrate through emails, written case studies, public events and/or green infrastructure fieldtrips in Calumet region.
- Increase awareness of flooding issues and solutions by engaging decision makers and community groups in meetings and workshops.
- Leverage Collaborative expertise to host 4 CFM accredited workshops for public officials on key green infrastructure topics (e.g., transportation resurfacing, green infrastructure maintenance).
- Leverage Collaborative expertise to host 2 workshops for public works staff on tree planting and maintenance and tree benefits regarding stormwater.
- Produce Collaborative “pitch” materials for different audiences to share with other work group and members to help shape future engagement opportunities).

## Planning and Policy Work Group

**Work Group Lead(s):** Nora Beck (CMAP) and Danielle Gallet (MPC)

**Work Group Purpose:** The Planning and Policy work group will focus on creating and implementing effective planning practices and policies that advance the integration of stormwater best management practices in the region.

**Work Group 2016 Impact Statement:** Develop guidance on the integration of stormwater best management practices into various community planning and project work, and explore policy avenues to advance improved stormwater management.

**Initiatives:**

- Develop a repository of resources on best practices and key considerations for communities on how to implement stormwater management into their community planning and capital improvement projects.
- Review the Urban Flooding and Awareness Act report and identify possible policy recommendations to pursue.



- Provide input to CMAP on its development of a white paper for communities in how to incorporate stormwater management into land use plans.
- Support the piloting of UIC’s participatory planning tool for green infrastructure in communities.
- Weigh-in on the exploration research being done about the use of vacant land as a stormwater management opportunity.

## Training and Maintenance Work Group

**Work Group Lead(s):** Margaret Schneemann (IISG) and Mollie Dowling (OAI)

**Work Group Purpose:** The Training and Maintenance work group strives to ensure long-term functionality/cost-effectiveness of and commitment to green infrastructure by aligning workforce development, training, installation & maintenance capacity with regional demand drivers.

**Work Group 2016 Impact Statement:** Better understand training and maintenance demand, ability to meet this demand, performance standards and policy barriers in order to identify actions necessary to build capacity for workforce training, volunteer training, and related economic development in the green infrastructure sector of the Calumet regional economy. This work group will foster collaborations and partnerships to advance actions to achieve these efforts.

### **Initiative:**

- Conduct a needs assessment/market analysis to ensure that training and workforce development efforts are a) in alignment with the Calumet coastal zone region’s occupational and employment needs, b) effectively leveraging partnerships and trainings and c) in accordance with demand drivers for green infrastructure, skills gaps, design standards, municipal regulations and the regional policy environment.

# CALUMET STORMWATER COLLABORATIVE – APPENDIX B



## 2015-2016 WORK GROUPS & ACCOMPLISHMENTS

2015 Work Plan Actions	Lead Entity	Participating Entities	Status		
			On Hold	In Progress	Completed
<b>Green Infrastructure Design Template Work Group</b>					
<b>Purpose:</b> Develop user-friendly, free green infrastructure design templates for communities	Delta Institute				
<b>Data Sharing and Modeling Work Group</b>					
<b>Purpose:</b> Focused on how models, tools and data can be developed and applied to support the overall objectives of the Collaborative.					
Create stormwater regional mapping viewer	CH2M & MWRD				
Create modeling extents data layer	CH2M, Geosyntec & SSMMA				
Create data sharing portal	CBBEL & SSMMA				
<b>Community Engagement, Planning and Implementation Work Group: RainReady</b>					
<b>Purpose:</b> Design and test an effective, replicable, affordable and public-friendly service to help homes, businesses and communities find solutions to too much or too little water.					
Design and test RainReady services in MR region	CNT	USACE, Village of Midlothian, SSMMA, Greencorps Chicago, OAI Highbridge, HCBA, Intel, MWRD, City of Chicago DPD, Elevate Energy, IDNR			

Develop two community-wide RainReady plans in MR region	CNT	USACE, Village of Midlothian, SSMMA, MWRD, Cook County, NPS, Active Transportation Alliance, IDNR			
<b>Green Infrastructure Installation, Troubleshooting and Maintenance Training Work Group</b>					
<b>Purpose:</b> Ensure long-term functionality/cost-effectiveness of and commitment to green infrastructure by aligning workforce development, training, installation & maintenance capacity with regional demand drivers.					
Develop ITMT programmatic logic model	IISG & OAI	ITMT Working group members			
Conduct a needs assessment based-off logic model	IISG & OAI	ITMT Working group members			
<b>Fast-tracking Section 319 Planning &amp; Approval Work Group</b>					
<b>Purpose:</b> Enhance existing MWRD detailed sub-watershed plans to enable MR communities to apply and access Section 319 grants & IEPA SRF					
Apply for funding to enhance plans	MPC	IEPA, IDNR, USEPA			
Update plans	MPC	IEPA			
<b>Land Banking Work Group</b>					
<b>Purpose:</b> Create program to address use of dispersed vacant lots for SW mgmt. and neighborhood greening.					
Develop methodology & tool for assessing suitability of vacant lands	Cook County Land Bank	MPC, Openlands & Ancel Glink			
Establish protocol for acquiring & maintaining vacant lands	Cook County Land Bank	MPC, Openlands & Ancel Glink			
<b>Green Infrastructure Inventory Work Group</b>					
<b>Purpose:</b> Develop an easy-to-use, comprehensive source of green infrastructure data in region for use by other working groups.					
Develop comprehensive inventory of all existing green infrastructure in MR	MPC	University of IL			