

Depave Chicago

*Creating a Depave Network to Renature Surface
Parking Lots in the Chicago Region*

Calumet Stormwater Collaborative - Extended member update
June 3, 2022

DEPAVE
CHICAGO



WALDER
FOUNDATION



WATER LAB

Landscape Architecture
COLLEGE OF FINE & APPLIED ARTS

Depave Chicago

New program starting up in 2022-23

Initiative: to create a depave program in the Chicago region to guide and oversee community-based depaving projects

Addressing (subtracting): design (in)equity, urban flooding, heat island, eyesores

Creating (adding): gardens, parks, tiny forests, play spaces, biodiversity

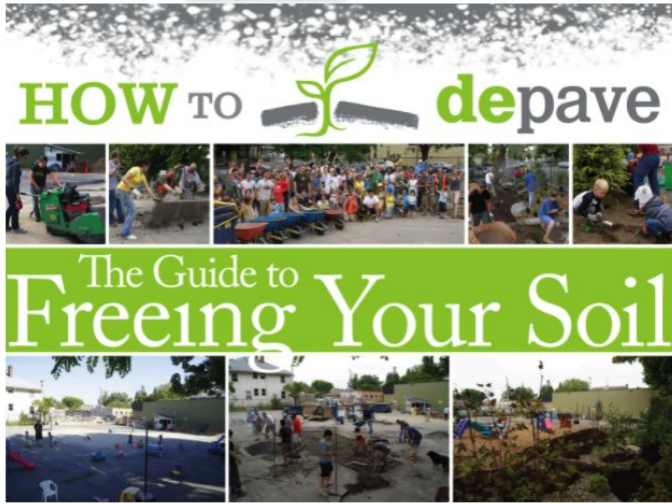
Partner-driven: organizations coming together, aligning goals

Research-driven: urban land/pavement retrofits, cumulative burden on EJ communities, rebuilding soils, 30x30

Start-up funded by a Resilient x Nature grant from the Walder Foundation



Depave started in Portland, Oregon in 2007 <https://depave.org/>



Depave Paradise - Ontario, Canada
Depave Puget Sound - Seattle-Tacoma
DepaveNEO - Cleveland
Depave Nashville - TN
Somerville Climate Action - MA
Depave Detroit - MI
Depave Chicago - -- coming soon!

DEPAVE
CHICAGO

Depave Network
[Learn about the Depave Network here](#)

- Depave Paradise — Canada
- Depave Puget Sound — Seattle-Tacoma
- DepaveNEO — Cleveland
- DepaveNashville — Tennessee
- Somerville Climate Action — Massachusetts

Portland Site Investigation

- Portland Maps
- Portland Sanborn Maps
- US Historical Maps
- Portland Comprehensive Plan Map App
- Watershed Boundaries Map
- Neighborhood Boundaries Map
- Soil Classifications

Stormwater

- Portland Stormwater Manual
- 1. Stormwater Management Facility Design
- 2. Raingarden Size Calculator
- 3. Simplified Approach Facility Design
- 4. Operations & Maintenance Procedures

- Sustainable Stormwater Management
- City of Portland Rainfall Data
- US EPA National Stormwater Calculator

Project Funding Sources

- Portland Bureau of Environmental Services – Community Watershed Stewardship Program
- East Multnomah Soil and Water Conservation District
- West Multnomah Soil and Water Conservation District
- Depaving Incentives – Portland Clean River Rewards
- Oregon Department of Environmental Quality
- U.S. EPA: Environmental Justice Small Grant Program
- Lowe's – Toolbox for Education Grant Program
- Scott's Miracle Grow – Grassroots Grants Program
- Ioby (in our back yard) fundraising platform




WALDER
FOUNDATION


I WATER LAB
Landscape Architecture
COLLEGE OF FINE & APPLIED ARTS

Depaving sites for community benefits and as a watershed management strategy

pierced.org/246/Depave-Puget-Sound

Create an Account - Increase your productivity, customize your experience, and engage in information you care about. Sign In


PIERCE CONSERVATION DISTRICT
 Over 70 Years of Conservation




[Home](#) | [What We Do](#) | [Water Quality](#) | [Green Stormwater](#) | [Depave Puget Sound](#)

DEPAVE PUGET SOUND

Why Depave?

Paved surfaces are the number one contributor to water pollution. Runoff, as it flows over paved surfaces, picks up and carries urban pollutants to local streams and Puget Sound. By removing unnecessary pavement and transforming them into green spaces, we can capture and absorb this runoff instead of sending pollution into storm drains and Puget Sound.



[Get Started!](#) [Find Support](#) [Learn More](#)

Depave Puget Sound is on a mission to transform neighborhoods while addressing the number one source of pollution in Puget Sound: polluted stormwater runoff. Join the regional movement to transform paved spaces throughout Puget Sound.

Whether you're removing pavement outside of your house or in a community space, you can transform these paved hard surfaces into beautifully landscaped green space where rain water can soak into the ground instead of carrying pollution to Puget Sound.

Ready to start depaving? Fill out this [form](#) to get started and PCD staff will follow up to schedule a site visit to learn more about your project.

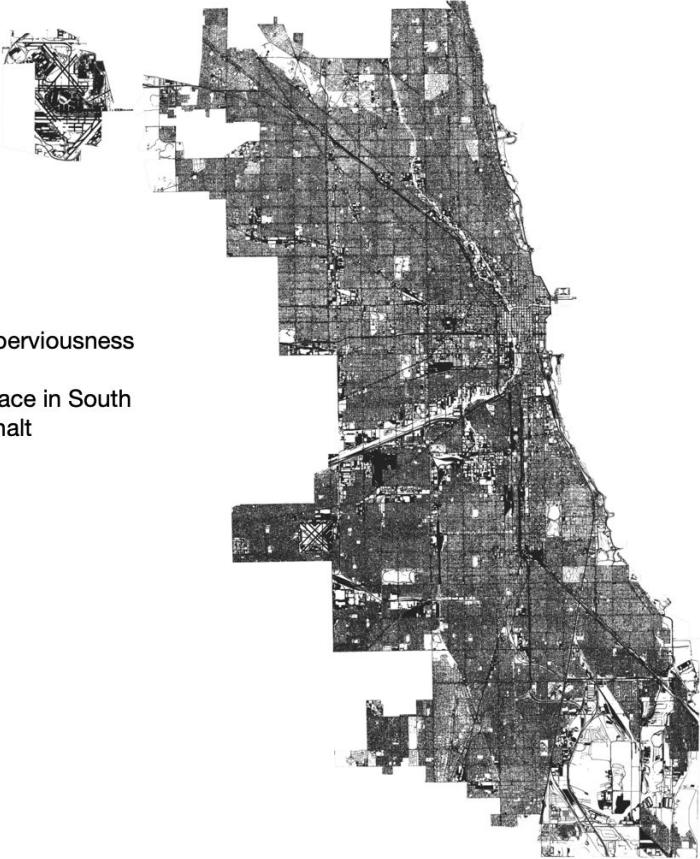
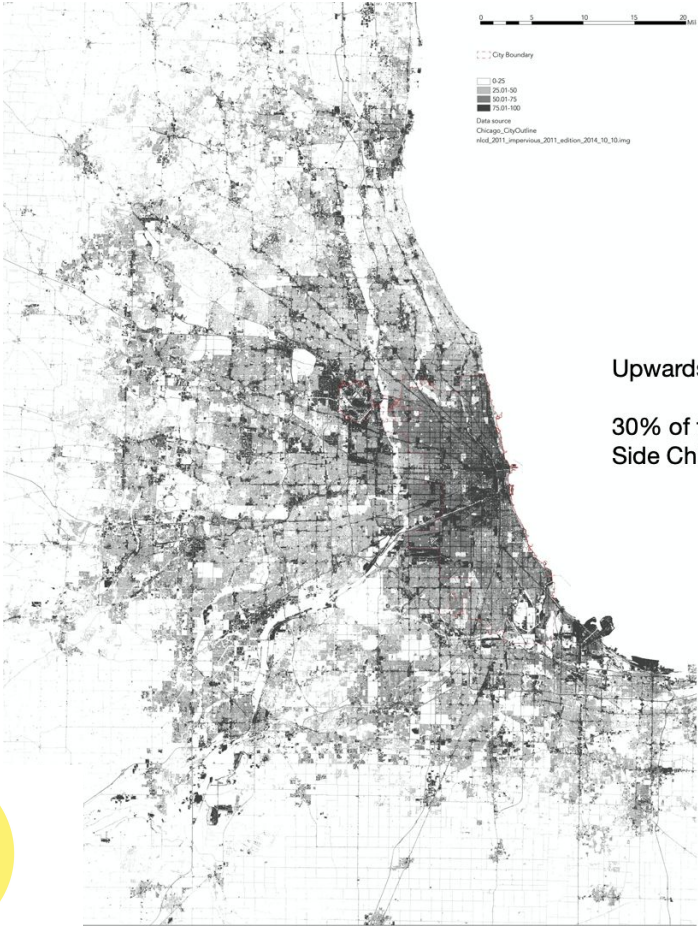
You can find even more support to get started by visiting our [resources page](#).



Misc images : (left) from Depave Puget Sound (left); (upper right) from depave project in Portland, OR; (middle right) small residential project in San Francisco; (lower right) public park conversion of a former airfield runway outside Frankfurt Germany.



Imperviousness in the Chicago region

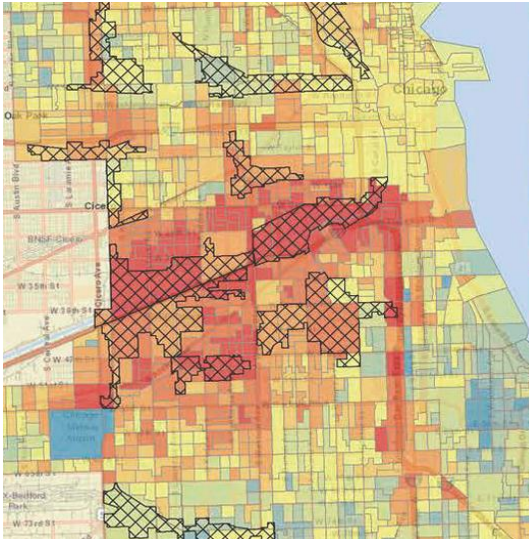


Upwards of 80% imperviousness

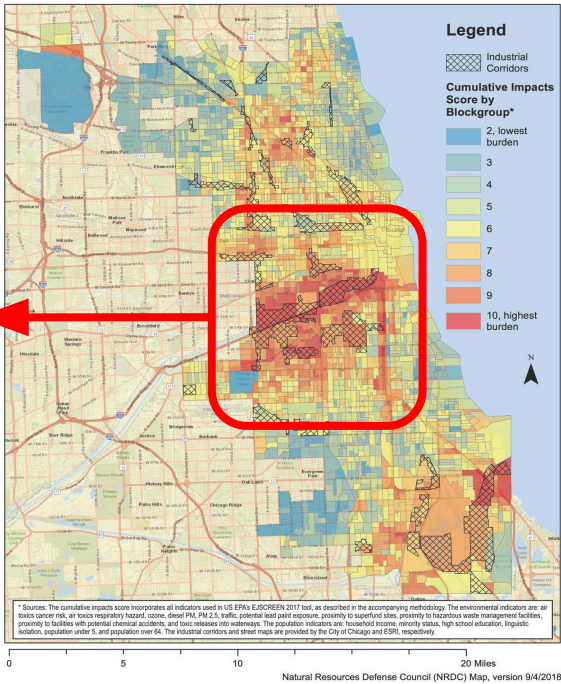
30% of the land surface in South Side Chicago is asphalt

DEPAVE
CHICAGO

Pavements concentrated by land-use/ adjacent to EJ communities



Cumulative Burden of Environmental Exposures & Population Vulnerability in Chicago



DEPAVE
CHICAGO

Targeting sites & engaging communities

Areas of high % imperviousness

Sites along rivers, environmental injustice communities, highway corridors, industrial land-use

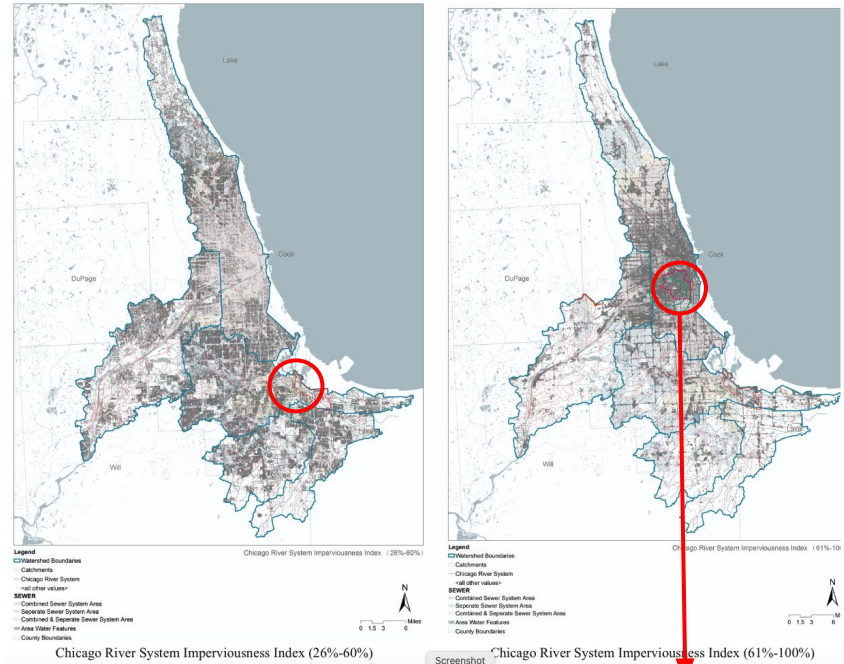
Site types might include:

- schools, churches, abandoned and underutilized parking lots, city-owned sites, industrial sites, commercial parking lots

Establish criteria for site selection

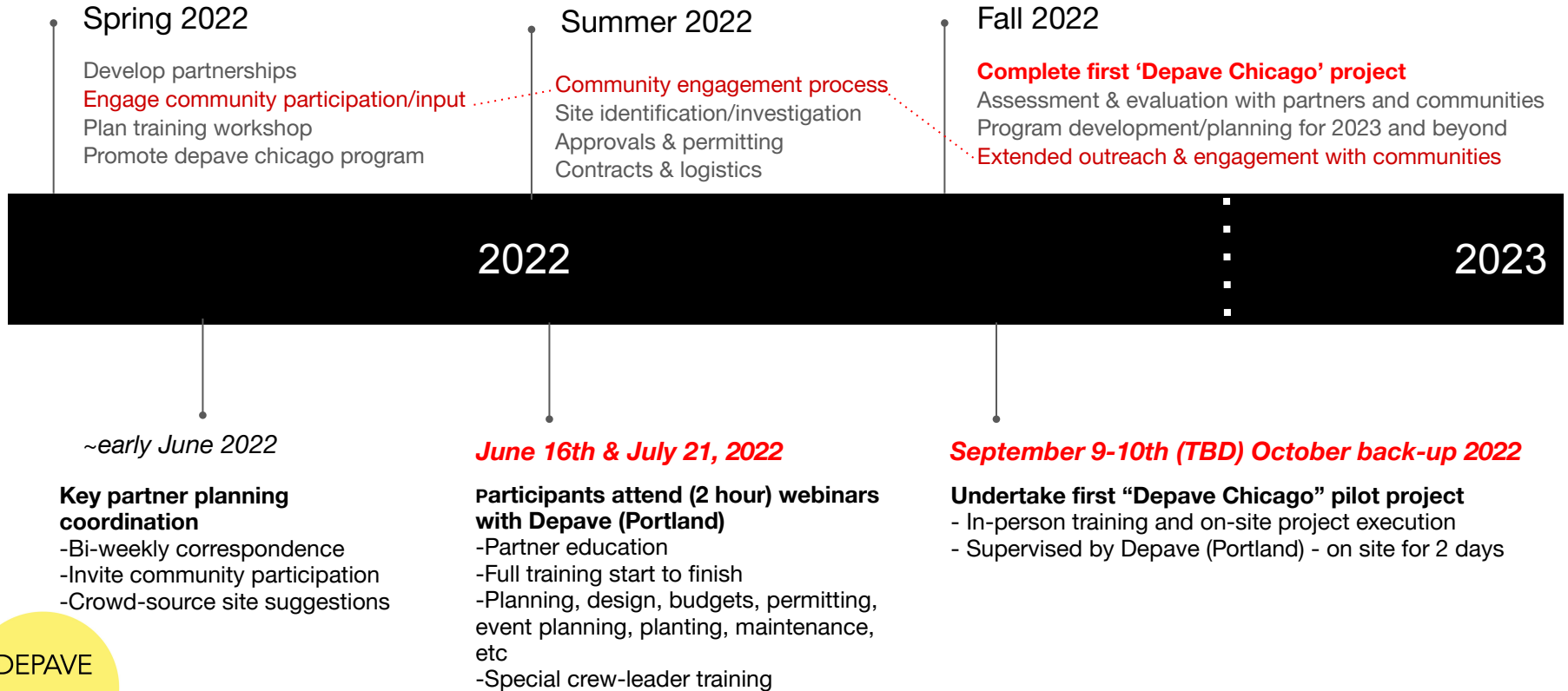
Apply performance metrics to the % of depaving

Design the site with the community and site owners



depaave chicago: site selection

Depave Chicago *timeline*





Mary Pat McGuire
mpm1@illinois.edu



UPCOMING WORKSHOPS - Please sign up below!

Depave Chicago is launching with two important workshops this summer to be followed by an actual depave project (Workshop #3). The workshops will teach partners and participants all the steps involved in completing a depave project. The workshops are free for everyone. We also invite anyone who wants specific training as a crew leader to contact us ASAP. Spaces and stipends are available for this training.

Workshop #1: Thursday, June 16th, 6 - 8:30 PM CST (online via Zoom)

Workshop #2: Thursday, July 21st, 6 - 8:30 PM CST (online via Zoom)

Workshop #3: TBD, in September or October 2022 (in-person)

More About the Workshops:

DEPAVE
CHICAGO

Mary Pat McGuire
mpm1@illinois.edu



WALDER
FOUNDATION



WATER LAB

Landscape Architecture
COLLEGE OF FINE & APPLIED ARTS

More About the Workshops:

Participants should plan to attend all workshops as the training modules build on each other in workshops #1 and #2, and culminate in workshop #3 - a depave project!

Workshop #1 topics include: Depave project partnering, site selection and equity, roles and expectations for site hosts and partners, funding strategies, community-centered design, site investigations such as soil testing, design guidance, permitting, insurance, contractors and volunteers, budgeting projects + plus an opportunity for attendees to design a site!

Workshop #2 topics include: Physical process of depaving, event planning and execution, excavation and hauling, planting events, post-depave monitoring, and an opportunity to create a budget and plan a depave event!

Workshop #3 is an actual hands-on, supervised depaving project to take place in September-October 2022! This event includes a classroom session on removal techniques, use of tools, safety protocols and oversight, and soil testing demo to be followed by the full-day depave event!



DEPAVE
CHICAGO

Mary Pat McGuire
mpm1@illinois.edu



WILDER
FOUNDATION

I WATER LAB
Landscape Architecture
COLLEGE OF FINE & APPLIED ARTS



Interesting in participating in the workshops?

Sign up here to participate in the Summer 2022 workshops and Fall 2022 depave project. By signing up you agree to participate in all 3 events. By participating, you become an important member of Depave Chicago and part of the larger depave network across the U.S.!

Can't make the workshops but want to stay connected? Sign up to receive updates below!

Name *

First Name

Last Name

Email *

Message *

Send

Thank you for spreading the word! We especially want to reach communities who may see benefit in this program, and who want to shape the program and the work we do!

We're also looking for project sites! Please share suggestions with us.

Follow us on Twitter! [@depavechicago](#)

Email me (Mary Pat McGuire) anytime at mpm1@illinois.edu

DEPAVE
CHICAGO

Mary Pat McGuire
mpm1@illinois.edu



WALDER
FOUNDATION



WATER LAB

Landscape Architecture
COLLEGE OF FINE & APPLIED ARTS