

*December 7, 2018*

# **GI Baseline Inventory Update D&M + P&P Work Groups**

# Agenda

- Green infrastructure baseline need assessment overview
- Polling the group! Help us shape the project purpose
- Defining Illinois' Calumet region



CSC exploring GI projects

# Green Infrastructure Needs Assessment

## What is the need?

- IDNR grant to MPC to assess the need for a green infrastructure inventory
- Project came from CSC work plan discussions – a D&M and P&P joint effort!

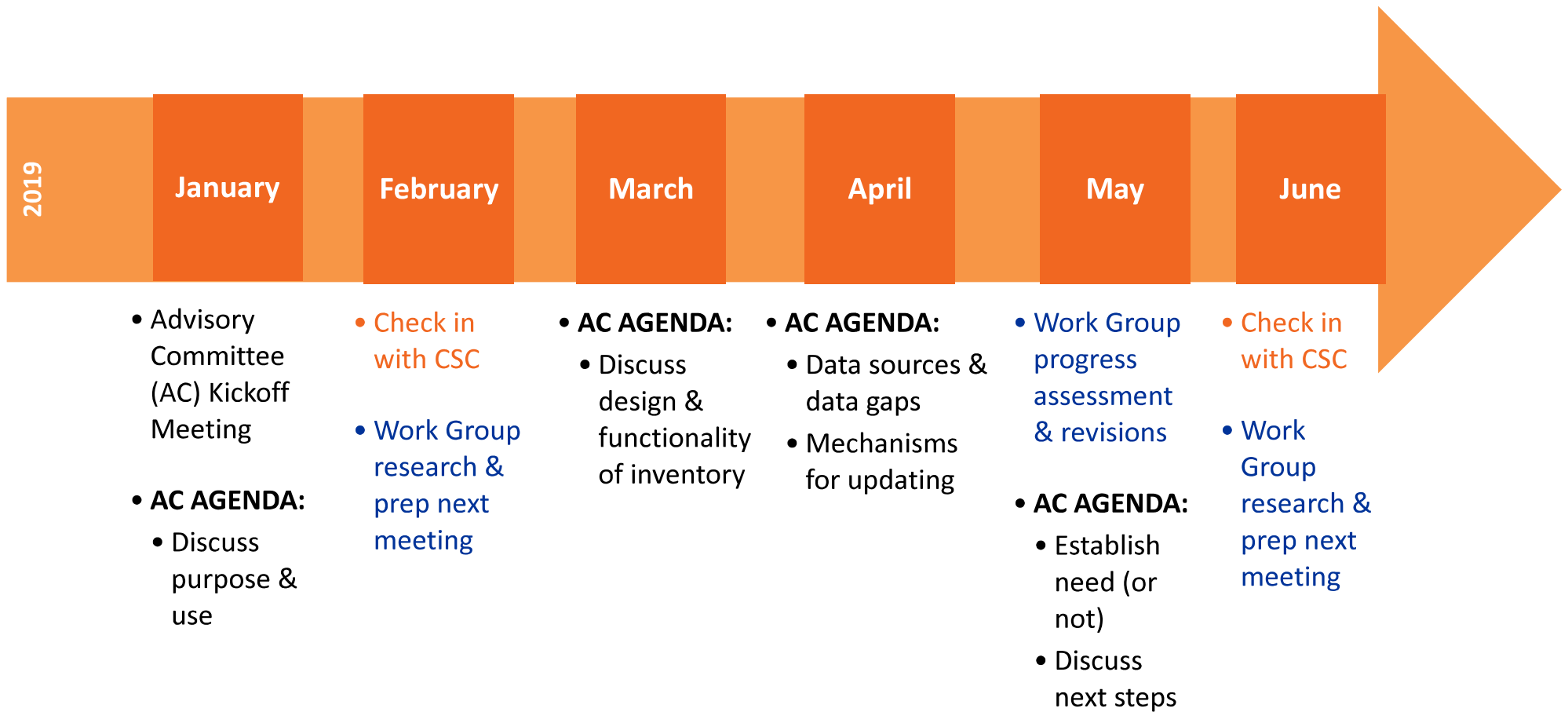
## Project approach

- Background research by MPC
- Series of meetings to determine existing information and shape project goals
- Touch points with the broader CSC

## What can you do?

- Interested???
- Considering joining the project CSC Advisory Committee!
- Or be involved in CSC monthly discussions!

# Needs Assessment Timeline



# What does CSC stand for?

17% A. Christmas Shopping Chaos

4% B. Computer Source Code

39% C. Calumet Stormwater Collaborative

39% D. Cardona's Scrumptious Cake

# What should the primary purpose of a GI inventory be?

- 43% A. Identify where existing green infrastructure investments are
- 39% B. Identify current green infrastructure performance
- 7% C. Identify funding sources used to implement green infrastructure
- 4% D. Quantify the amount of stormwater diverted
- 7% E. Something else entirely!

## What should the **SECOND** primary purpose of a GI inventory be?

- 21% **A.** Identify where existing green infrastructure investments are
- 34% **B.** Identify current green infrastructure performance
- 14% **C.** Identify funding sources used to implement green infrastructure
- 28% **D.** Quantify the amount of stormwater diverted
- 3% **E.** Something else entirely!

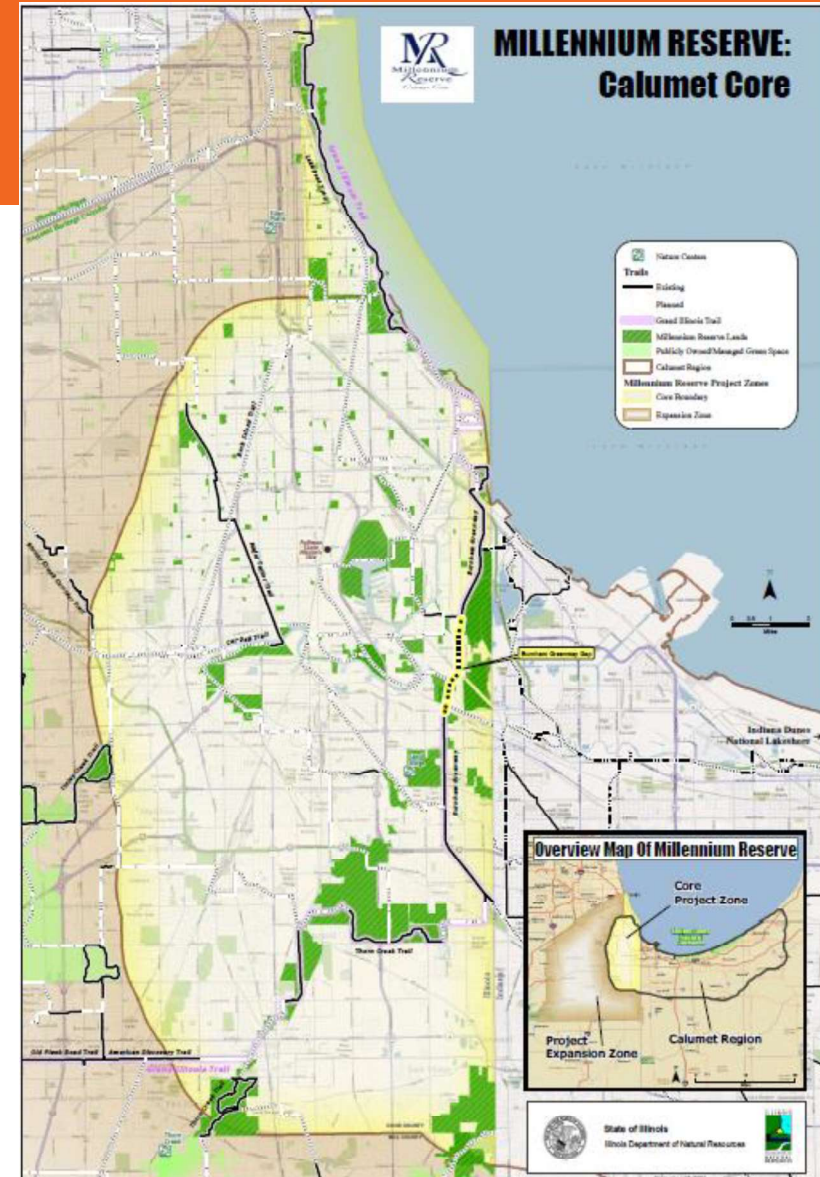
## Who is the most likely user of a green infrastructure inventory?

- 24% A. CSC members & their organizations
- 21% B. Metropolitan Water Reclamation District
- 28% C. Municipalities
- 3% D. Engineering firms
- 10% E. Funders
- 14% F. Someone else entirely!



# Calumet Region

- Millennium Reserve in Illinois
  - The Reserve stretches from downtown Chicago southwest to suburban Park Forest, Illinois

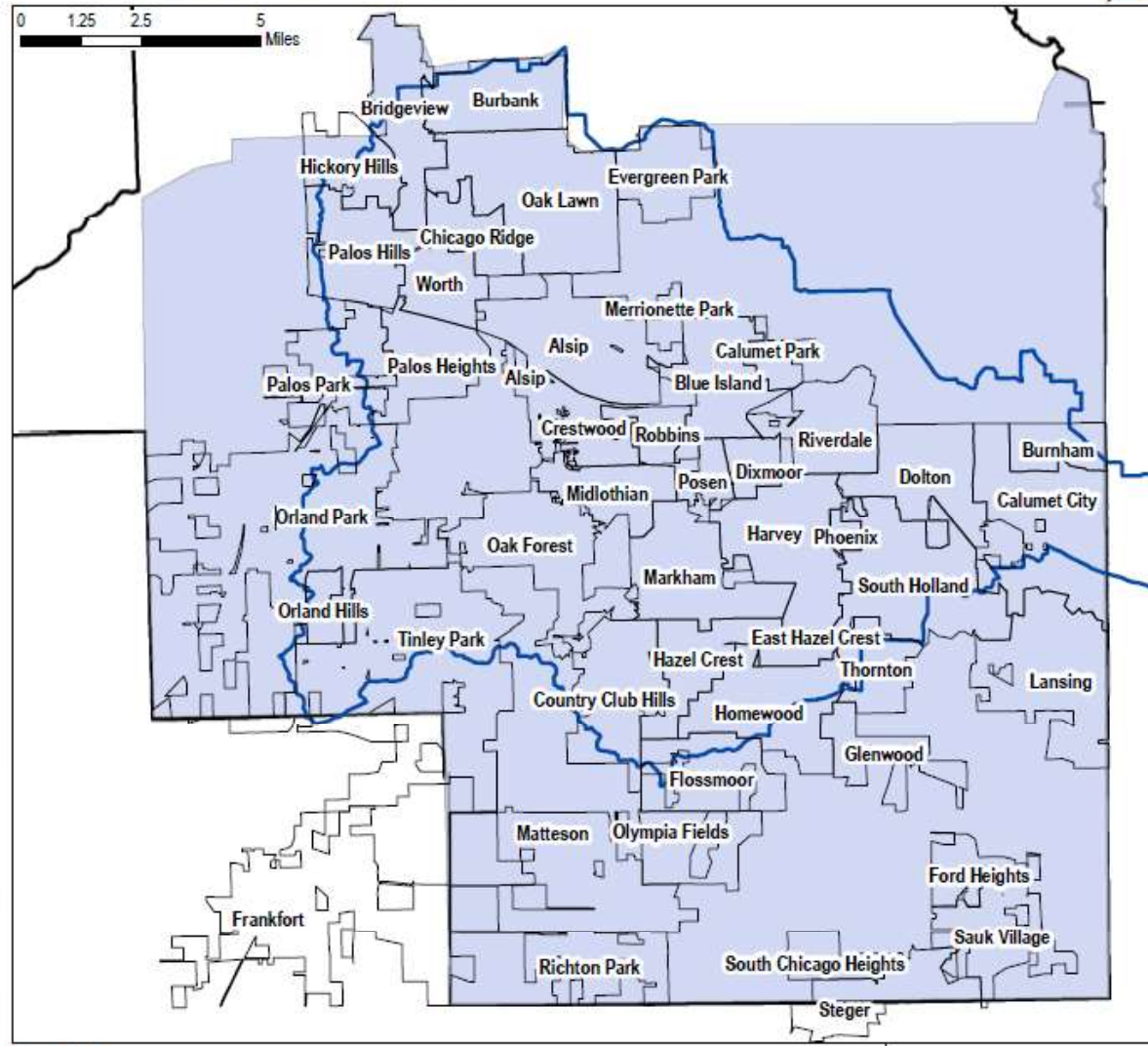


# Calumet Region

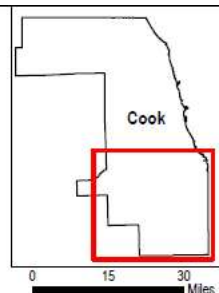
- Two boundaries:
  - The Calumet Water Reclamation Plant.
  - The Calumet Sag Channel and Little Calumet River.

## Calumet Region Communities

Based on Calumet Water Reclamation Plant



Legend  
Calumet Sag Channel- Little Calumet River  
Calumet Water Reclamation Plant Communities



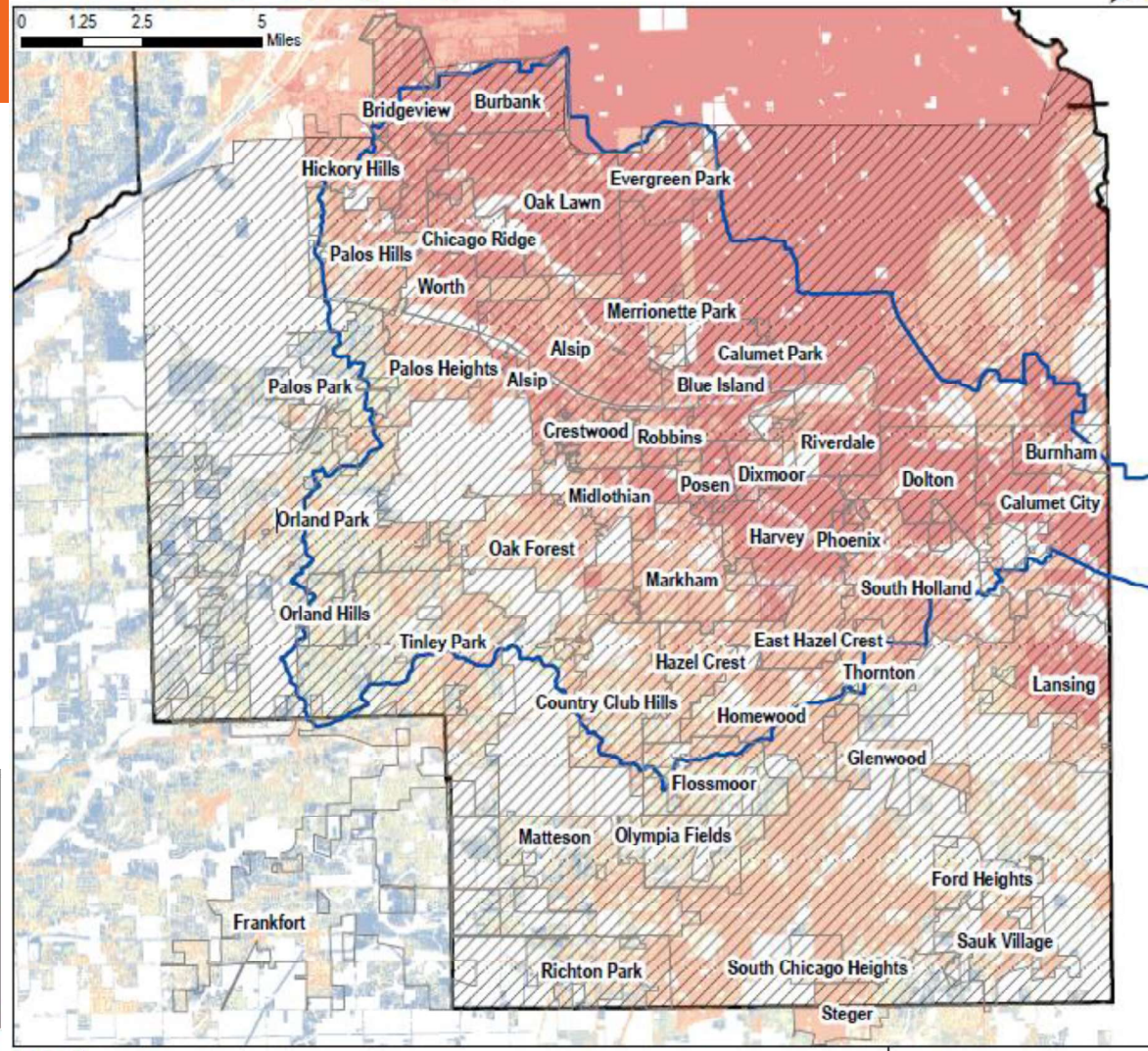
Data: CMAP; Cook County Open Data; Calumet Water Reclamation Plant.  
Projection: NAD 1983 StatePlane Illinois East FIPS 1201 Feet

# Calumet Region

- Two boundaries:
  - The Calumet Water Reclamation Plant.
  - The Calumet Sag Channel and Little Calumet River.

## Calumet Region Communities

Based on CMAP Flood Suceptibility Index (2018)



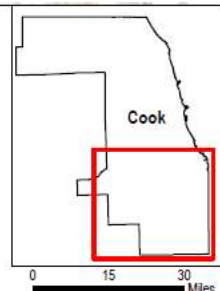
### Legend

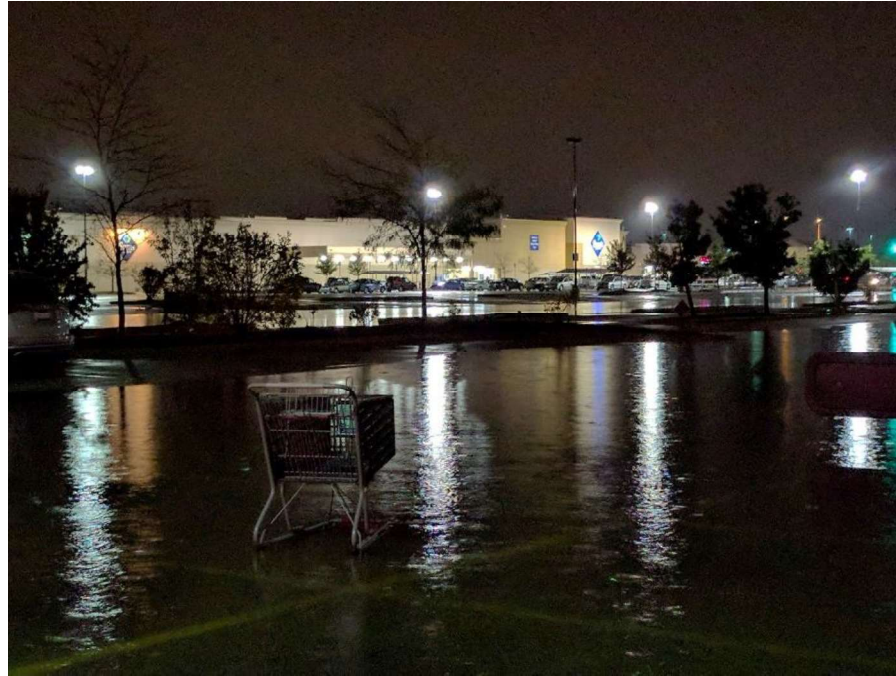
- Calumet Sag Channel- Little Calumet River
- Calumet Water Reclamation Plant Communities

### Flood Suceptibility Index

- 1 - 2
- 3 - 4
- 5 - 6
- 7 - 8
- 9 - 10

Data: CMAP; Cook County Open Data; Calumet Water Reclamation Plant.  
Projection: NAD 1983 StatePlane Illinois East FIPS 1201 Feet





*December 7, 2018*

# UF Baseline Inventory Update D&M + P&P Work Groups

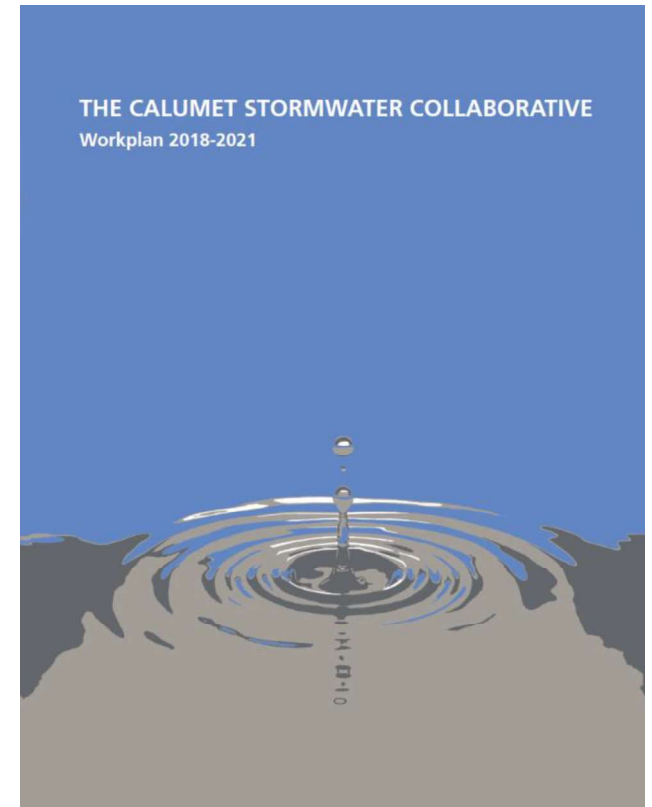
# CSC 3-Year Work Plan

## **GOAL:**

Significant reduction in non-overbank flooding

## **ACTIVITY 2:**

Establish baseline of non-overbank flooding



# Urban Flooding Baseline Inventory

- **Background Research:**

Prior efforts at compiling urban flooding data in the region or across the nation  
What metrics? What data sources?

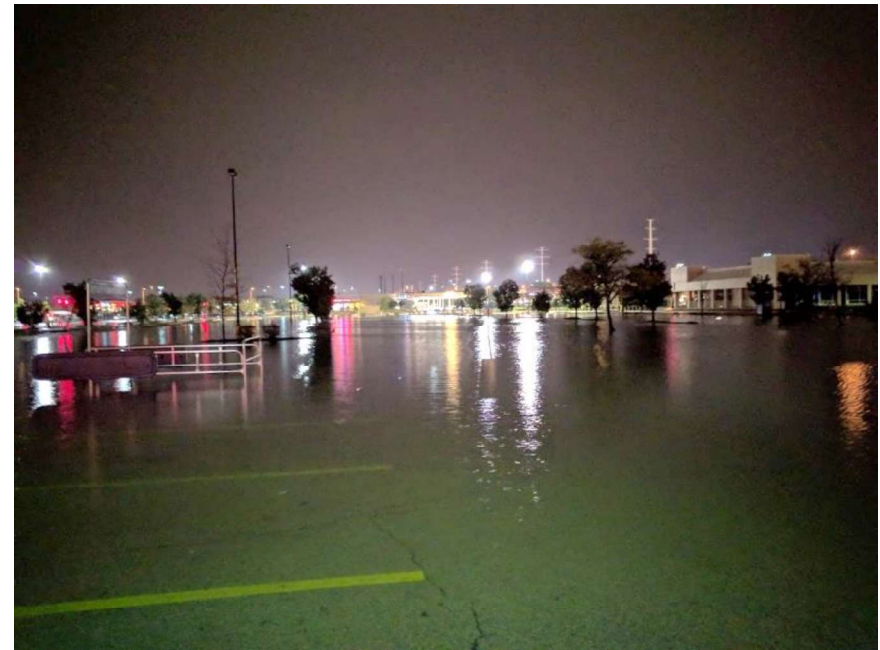
- **Needs & Feasibility Assessment:**

Convene relevant stakeholders to discuss...

- overall need for an urban flooding baseline inventory
- existing conditions
- current gaps in knowledge or process
- potential existing inventories and datasets
- overall feasibility of determining an urban flooding baseline for the Calumet region

# Advisory Committee Meetings

- **Who?**  
Subset of D+M and P+P Work Group members plus relevant stakeholders and potential users of the inventory
- **Where?**  
Meetings will take place outside of regularly-scheduled CSC meetings, either via phone or in person
- **How?**  
Core group will report to, and receive feedback from, D+M and P+P Work Group members and broader CSC



# Tentative Schedule of Meetings

- Meeting 1:  
Definition of “urban flooding”
- Meeting 2:  
Data sources and data gaps
- Meeting 3:  
Potential uses and users of the inventory
- Meeting 4:  
Draft scope of next steps



Source: MWRD



## To understand the extent urban flooding in the Calumet, what should the inventory focus on documenting?

- 41% A. Flood prone areas
- 17% B. Structures impacted
- 21% C. Neighborhoods impacted
- 7% D. Distribution of 311 calls for flooding-related issues
- 3% E. Street closures in a given rain event (validated with satellite)
- 10% F. Other

Should “urban flooding” also capture riverine flooding that impacts nearby residences?

78% A. Yes

22% B. No