



*Rice Native gardens at the Field Museum*

# Chicago Wilderness Mapping Hub: A New Tool for Tracking Conservation Goals

June 3, 2022

## **Mark Bouman**

*Chicago Region Program Director  
Keller Science Action Center  
mbouman@fieldmuseum.org*

## **Mark Johnston**

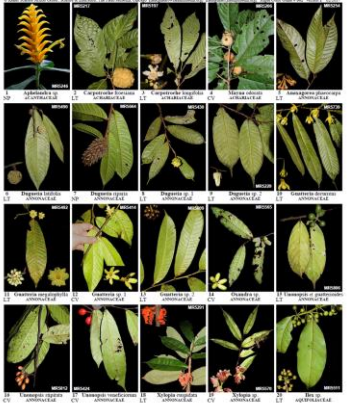
*Lead GIS Analyst and Conservation Ecologist  
Keller Science Action Center  
mjohnston@fieldmuseum.org*



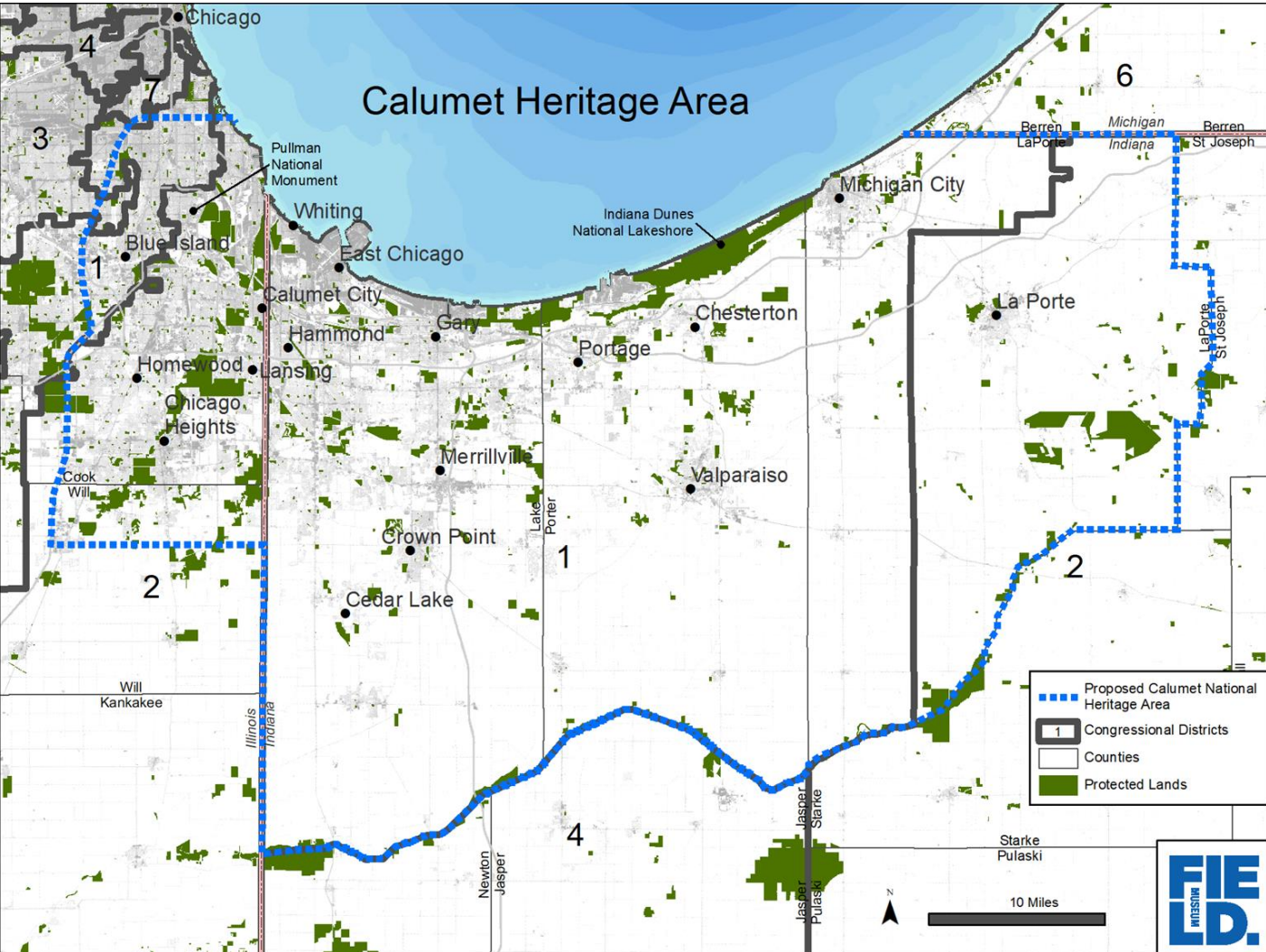
# Science Action Center

## Río Putumayo y Algodón, Loreto, PERÚ Plantas Comunes del medio PUTUMAYO-ALGODÓN

Luis A. Torres Montenegro / María A. Ruiz-Pardo / Andrés A. Barona Calles / César Yonover / Yago Pizarro /  
Departamento de Biología y Geología, Instituto Tecnológico de San Marcos (ITEG), Universidad Nacional del Tumbes, Tumbes, Perú. Email: luis.torres@unata.edu.pe, maria.ruiz@unata.edu.pe, andres.barona@unata.edu.pe, cesar.yonover@unata.edu.pe, yago.pizarro@unata.edu.pe



# Calumet Heritage Area



# MAPPING THE REGION

**Explore the Calumet Region**

The Calumet Region is a unique area for its size and diversity. It is a mix of urban, suburban, and rural landscapes along the Chicago South Side. The region is home to a rich cultural heritage, including the historic Pullman neighborhood, the University of Illinois at Chicago, and the University of Chicago. The region is also home to a diverse population, including many immigrants and refugees. The region is a mix of urban, suburban, and rural landscapes along the Chicago South Side.

**Discover Nature**

The Calumet Region is home to a rich and diverse natural landscape. The region is home to a variety of natural resources, including wetlands, forests, and parks. The region is also home to a diverse population, including many immigrants and refugees. The region is a mix of urban, suburban, and rural landscapes along the Chicago South Side.

**Transform Through Community Engagement**

The Calumet Region is a unique area for its size and diversity. It is a mix of urban, suburban, and rural landscapes along the Chicago South Side. The region is home to a rich cultural heritage, including the historic Pullman neighborhood, the University of Illinois at Chicago, and the University of Chicago. The region is also home to a diverse population, including many immigrants and refugees. The region is a mix of urban, suburban, and rural landscapes along the Chicago South Side.

**Calumet A Region of Natural Significance**

The Calumet Region is a unique area for its size and diversity. It is a mix of urban, suburban, and rural landscapes along the Chicago South Side. The region is home to a rich cultural heritage, including the historic Pullman neighborhood, the University of Illinois at Chicago, and the University of Chicago. The region is also home to a diverse population, including many immigrants and refugees. The region is a mix of urban, suburban, and rural landscapes along the Chicago South Side.

**Map Key**

Legend for the Calumet Region map, including categories for parks, water bodies, and urban areas.

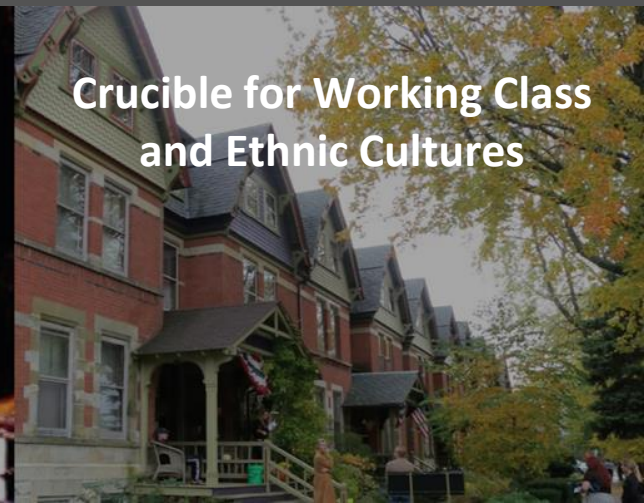
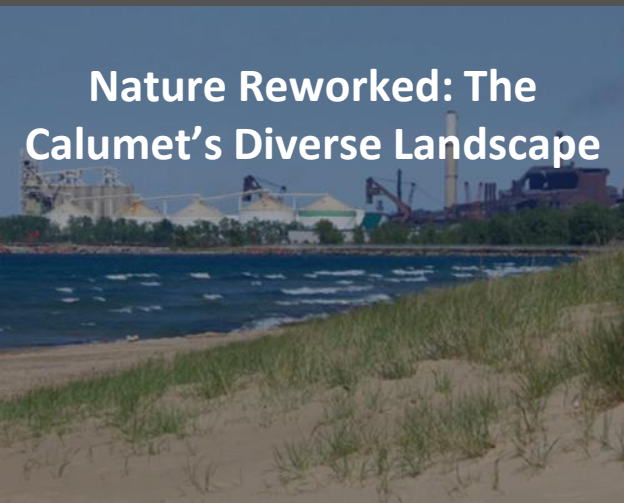
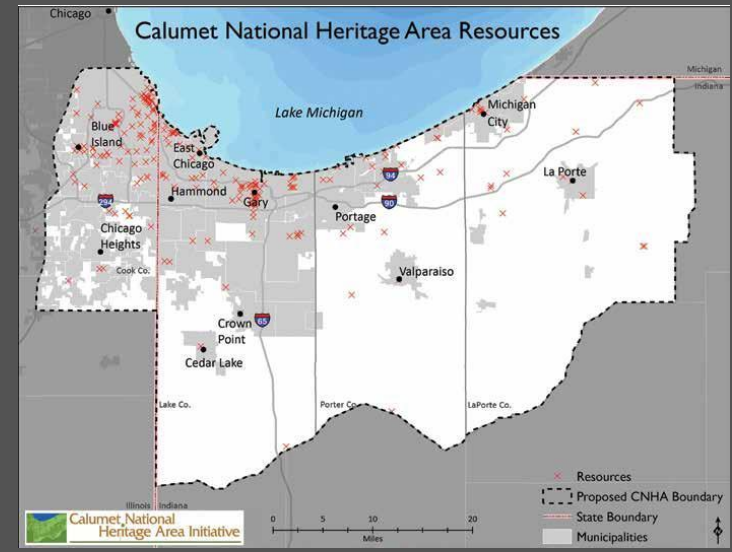
**South Side**

**Calumet Region**

EXIT



The **Calumet Heritage Area** is a place of nationally significant natural, industrial, labor, and cultural heritage assets, that are preserved and interpreted to advance economic opportunity, and enrich the lives of its residents and visitors from across the nation



# Lake Michigan



# LITTLE CALUMET RIVER CONSERVATION ACTION PLAN



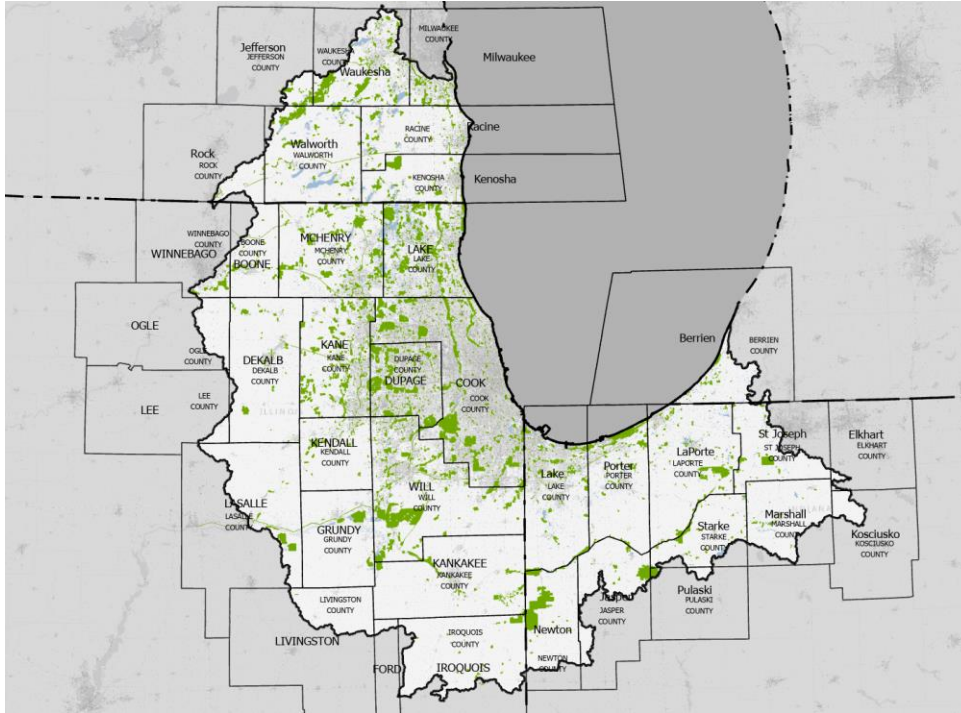
# Chicago Wilderness

## Chicago Wilderness “Green Vision”

Diverse members working together in the region for *vibrant nature that improves environmental and human health, promotes better quality of life, and benefits our collective home – today and for generations to come.*



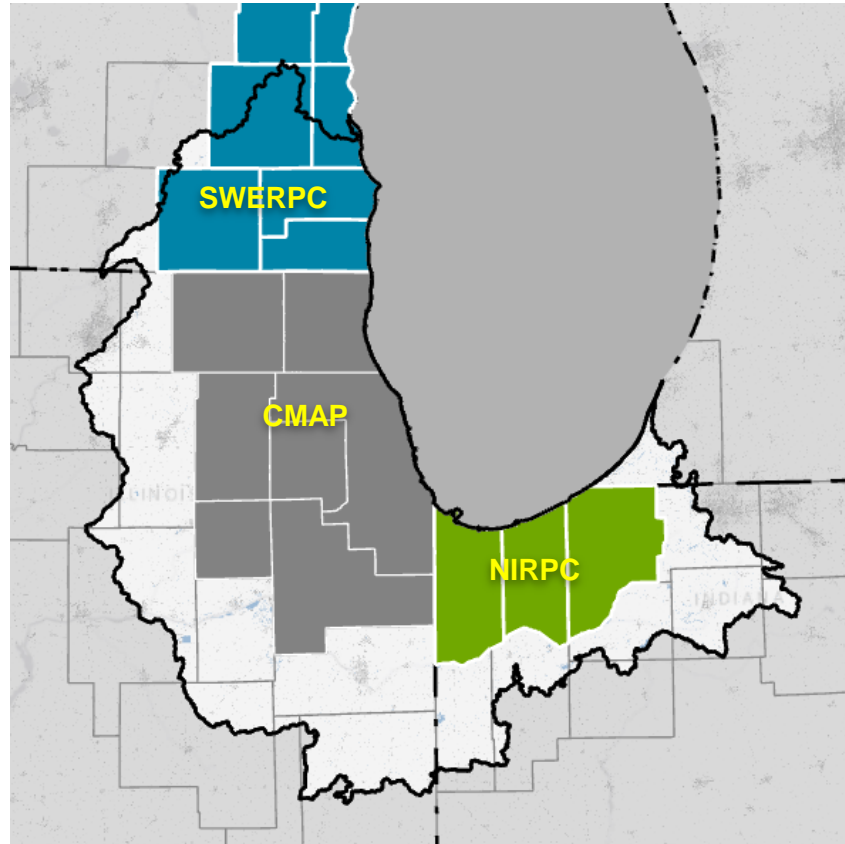
# “Chicago Wilderness” is not only an organization: It’s a massive geography...



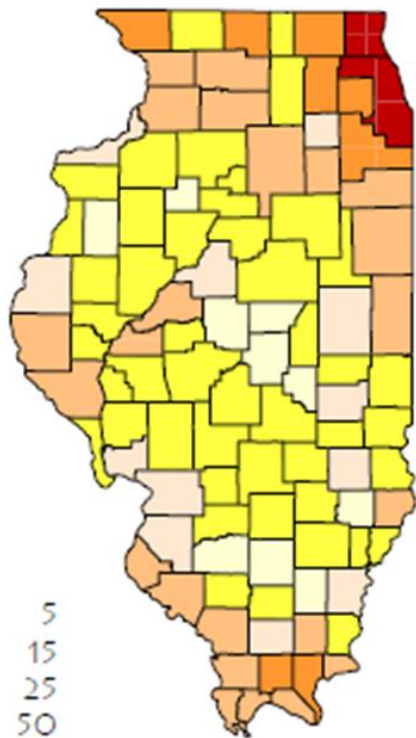
- 4 states
- 37 counties
- 553 municipalities
- 578K protected acres
- 283M agricultural acres
- 8M total acres
- >11M people

# Regional Planning Agencies

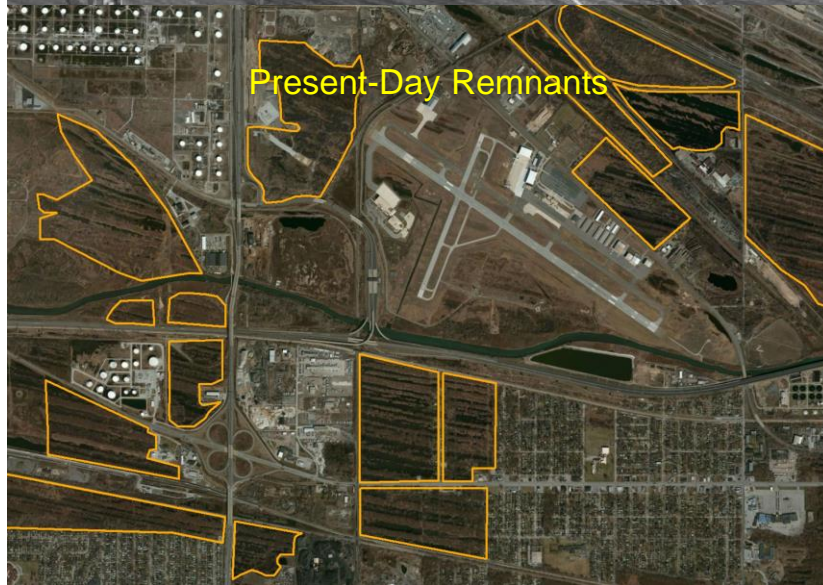
- Regional planning agencies do not cover the CW geography
- No central repository for geospatial data
- Watershed plans are not collected in a central place



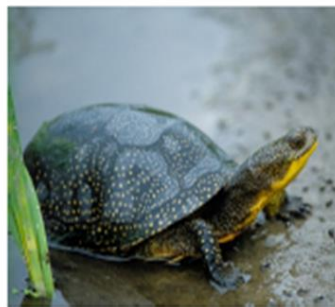
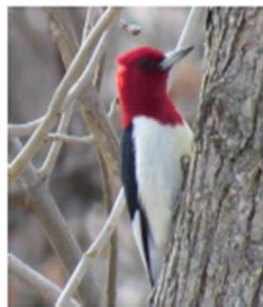
# ENDANGERED AND THREATENED SPECIES IN ILLINOIS



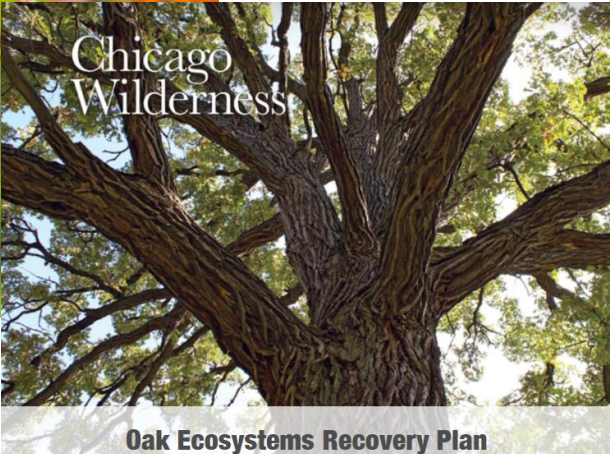
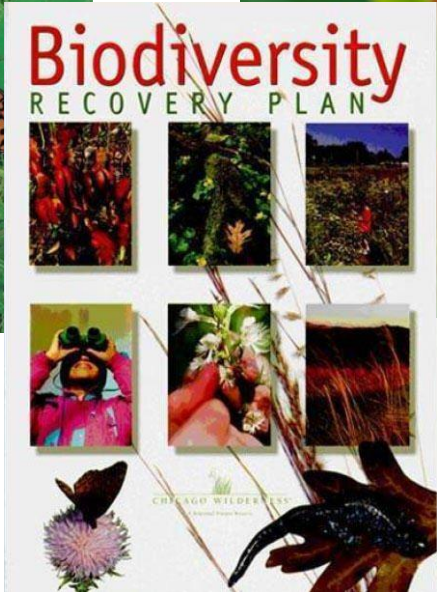
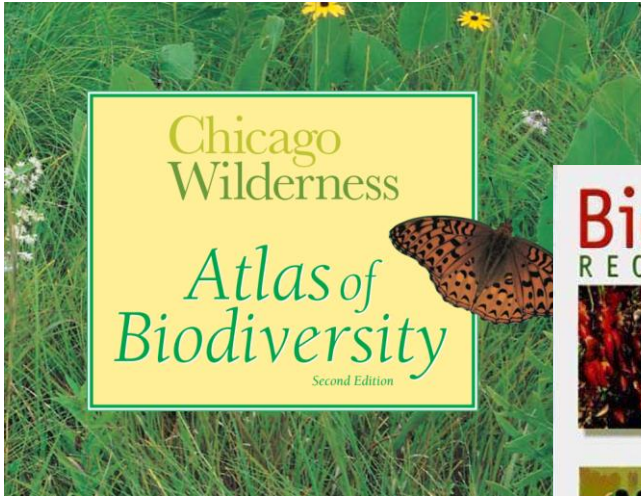
0 TO	5
6 TO	15
16 TO	25
26 TO	50
51 TO	100
OVER	100



# 12 SPECIES

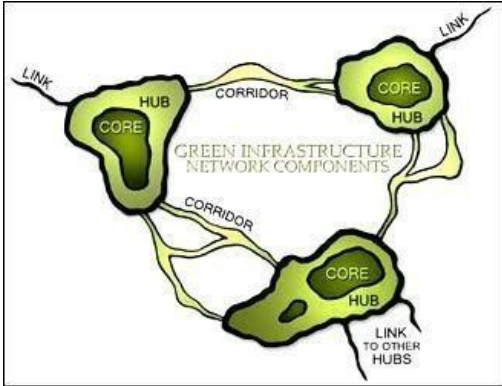
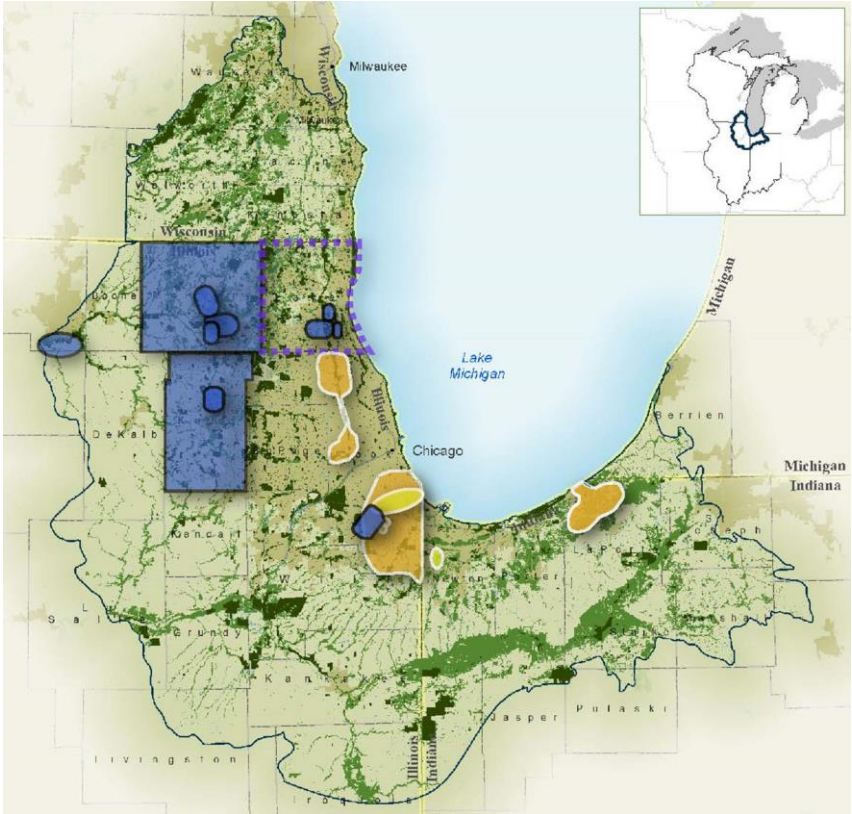


# Reports and Plans



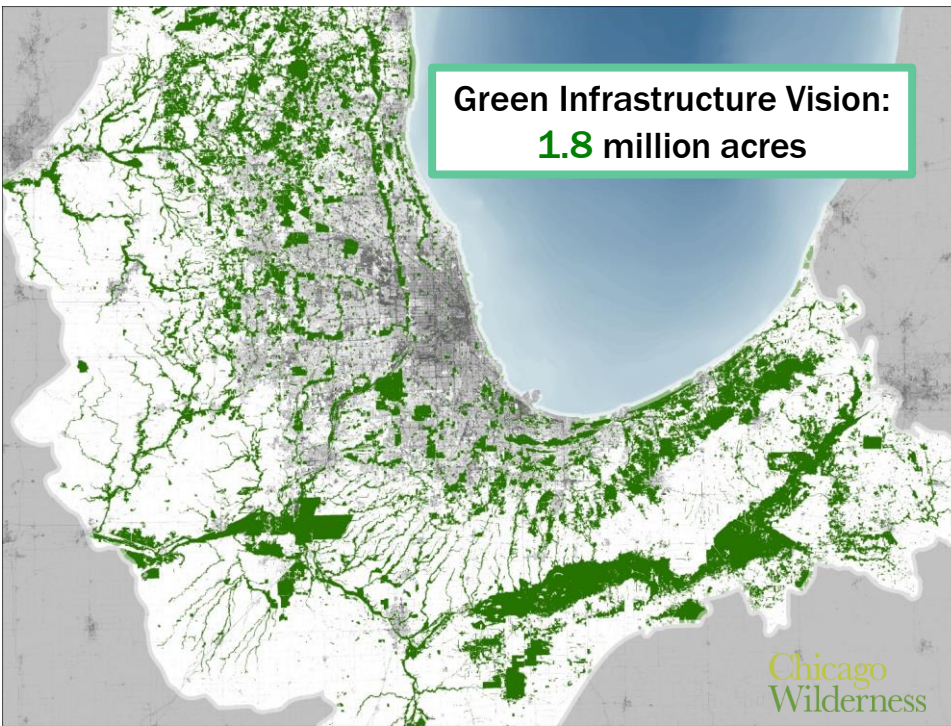
SUSTAINING OAKS  
IN THE CHICAGO WILDERNESS REGION

# Green Infrastructure Vision (GIV)



# The original “Green Infrastructure Vision”

Instead of only focusing on ecological restoration in connected green corridors...



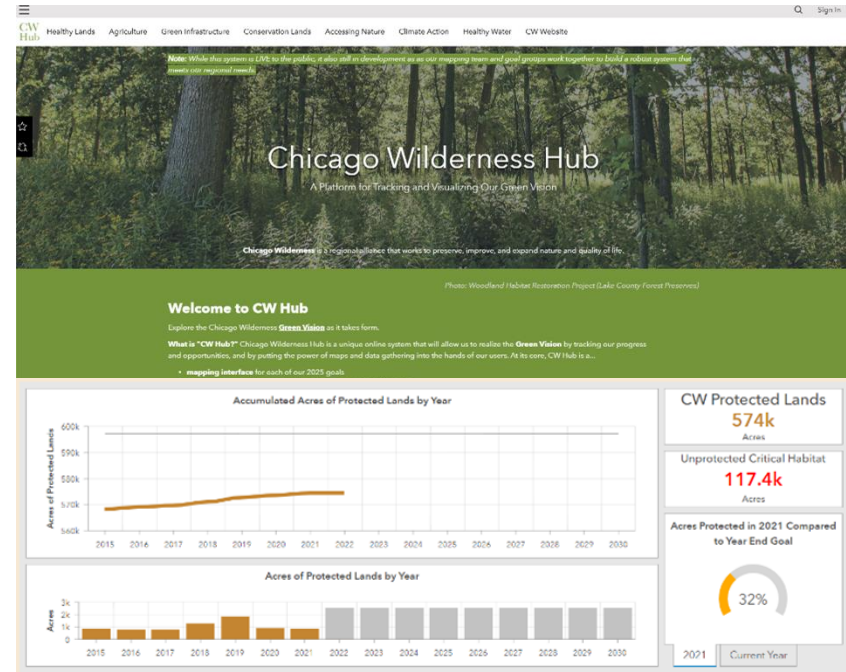
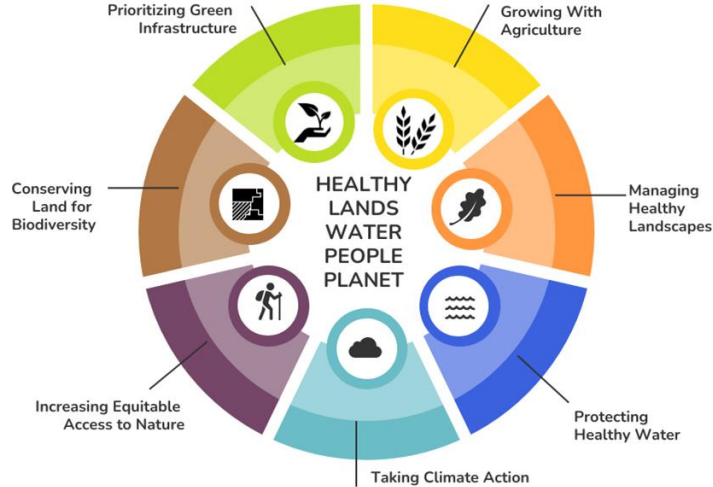
# Has been expanded to the “Green Vision”

The focus now includes all sectors and engages people from **all** walks of life as expressed by 7 conservation goals...



# Chicago Wilderness Green Vision & Hub

## GREEN VISION - 2025 chicago wilderness HUB



25

578k

250+

7



# Purpose of “CW Hub”

- Organize around key conservation goals
- Getting GIS in the hands of the public/stakeholders
- Track our regional progress
- One stop shop for regional conservation
- Landing pages for each conservation goal

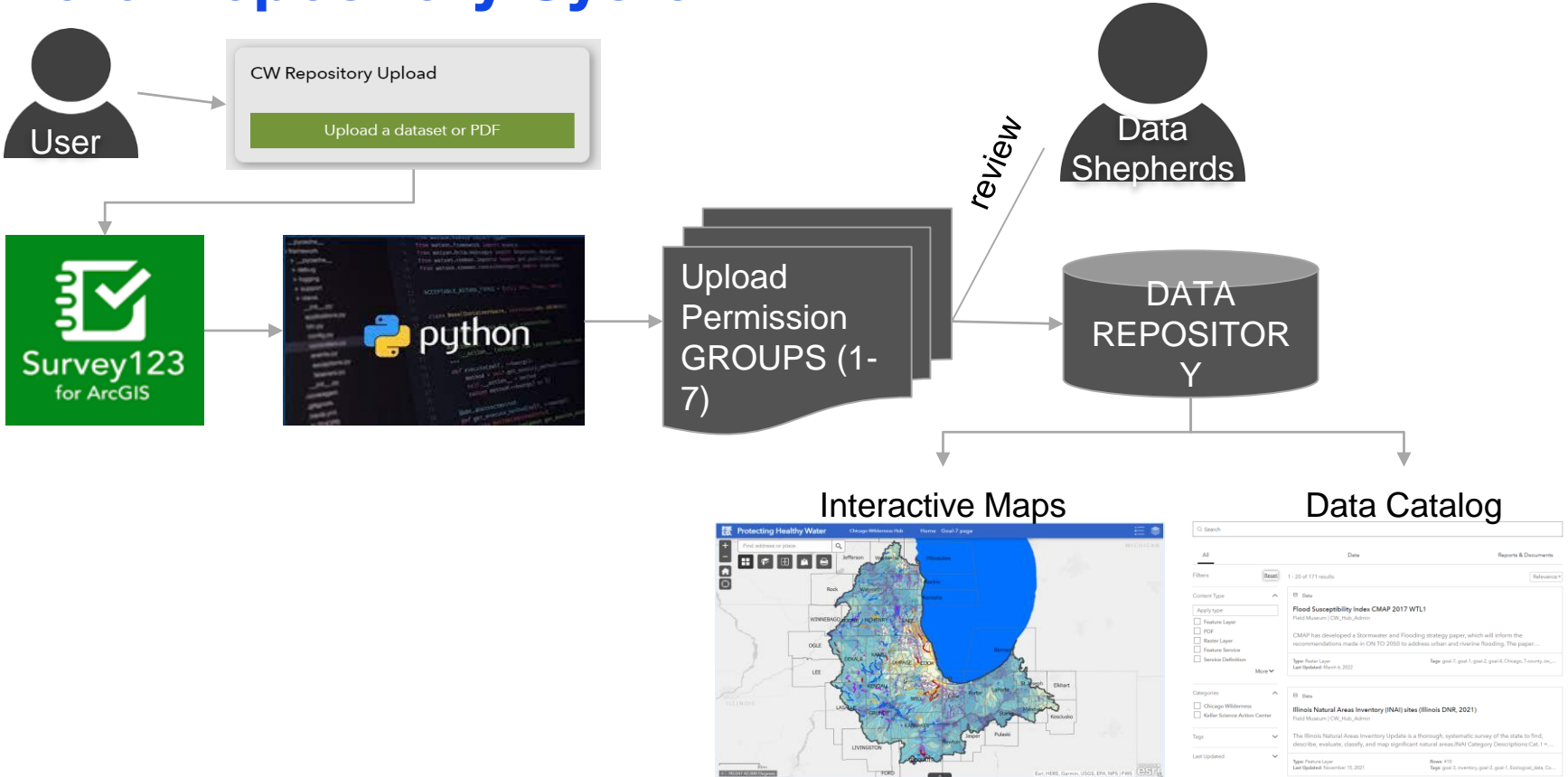
(w/ Interactive maps, map galleries, and resources)

# “CW Hub” Quick Tour

(Demo-1)

[hub.chicagowilderness.org](http://hub.chicagowilderness.org)

# Data Repository System

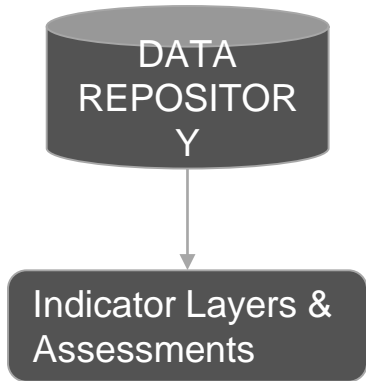


# Demo 2

Using the “Data Repository”

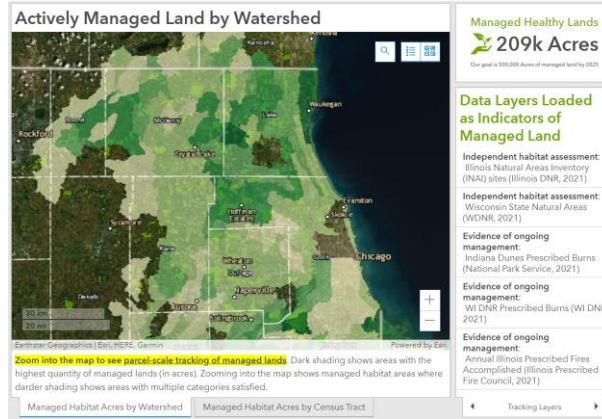
[hub.chicagowilderness.org](http://hub.chicagowilderness.org)

# Data Capture and Tracking System



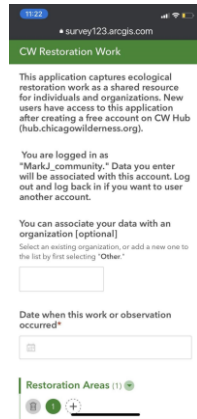
- Habitat designations
- Management activity
- Critical wildlife observations
- Floristic quality
- Habitat connectivity

## Dashboard Tracking Maps



## Field Maps S123 & Quick Capture

### Restoration Work



### Invasive Plant Observations



# Demo 3

Healthy Lands Data Capture and  
Goal Tracking System

[hub.chicagowilderness.org](http://hub.chicagowilderness.org)

# Next Steps

1. Update goal landing pages with a clear vision of the problem and how it will be addressed.
2. Create robust tracking systems and dashboards for each conservation goal.
3. Deploy data capturing systems such as field apps for additional conservation goals.
4. Add thematic interactive maps.



**Questions?**

**Mark Johnston, Ph.D.**

*Lead GIS Analyst and Conservation Ecologist  
Keller Science Action Center  
[mjohnston@fieldmuseum.org](mailto:mjohnston@fieldmuseum.org)*

**Mark Bouman, Ph.D.**

*Chicago Region Program Director  
Keller Science Action Center  
[mbouman@fieldmuseum.org](mailto:mbouman@fieldmuseum.org)*



**FIELD.**  
**MUSEUM**