



# **Strengthening Community Development Through Integrated Water Master Planning**

Drinking Water 1-2-3 Regional Event #4

# What is Master Planning and why is it Important?



**Evaluation of source water, water treatment facilities, distribution system, storage, and ancillary facilities to meet the evolving needs of communities**

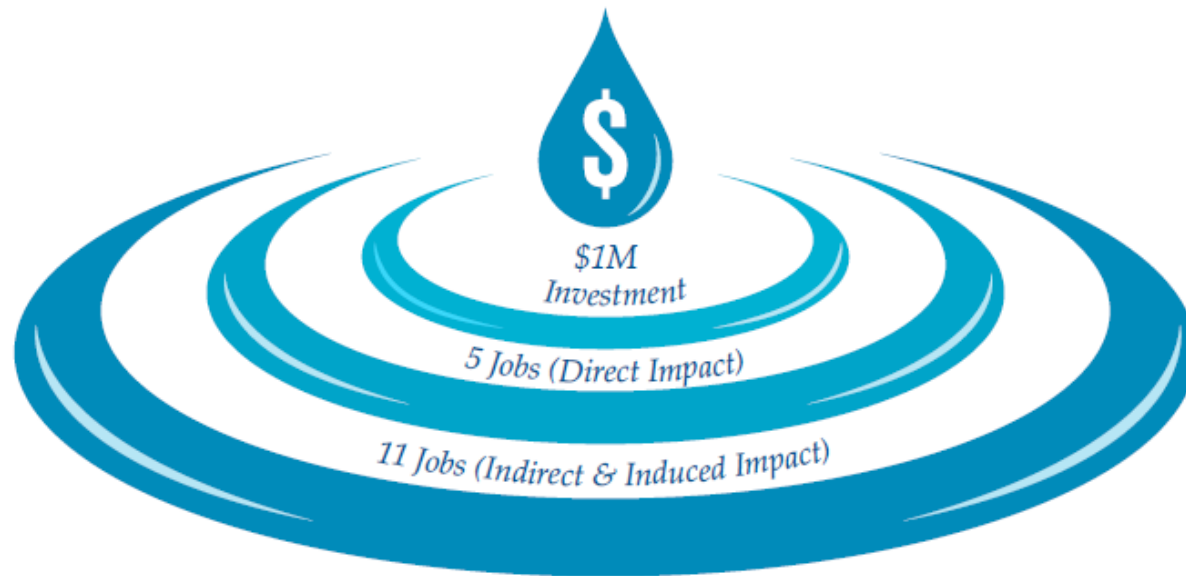
- Capital planning
- Prioritizing improvements
- Managing risk and resiliency
- Best management practices
- Sustainable improvements
- Replacing aging infrastructure
- Opportunities for collaboration with other agencies and communities
- Growth opportunities



# Water Industry is Economic Driver of Community

Water , wastewater, and stormwater utilities will contribute \$524 billion to the economy over the next decade, supporting 189,000 permanent jobs.

$$\begin{array}{cccc} \$1\text{M} & = & 5 \text{ Jobs} & + & 11 \text{ Jobs} & = & 16 \text{ Jobs} \\ \text{Investment} & & \text{Direct Impact} & & \text{Indirect \& Induced Impact} & & \text{Total} \end{array}$$



From WERF September 2014, National Economic & Labor Impacts of the Water Utility Sector



# What is your Brand?

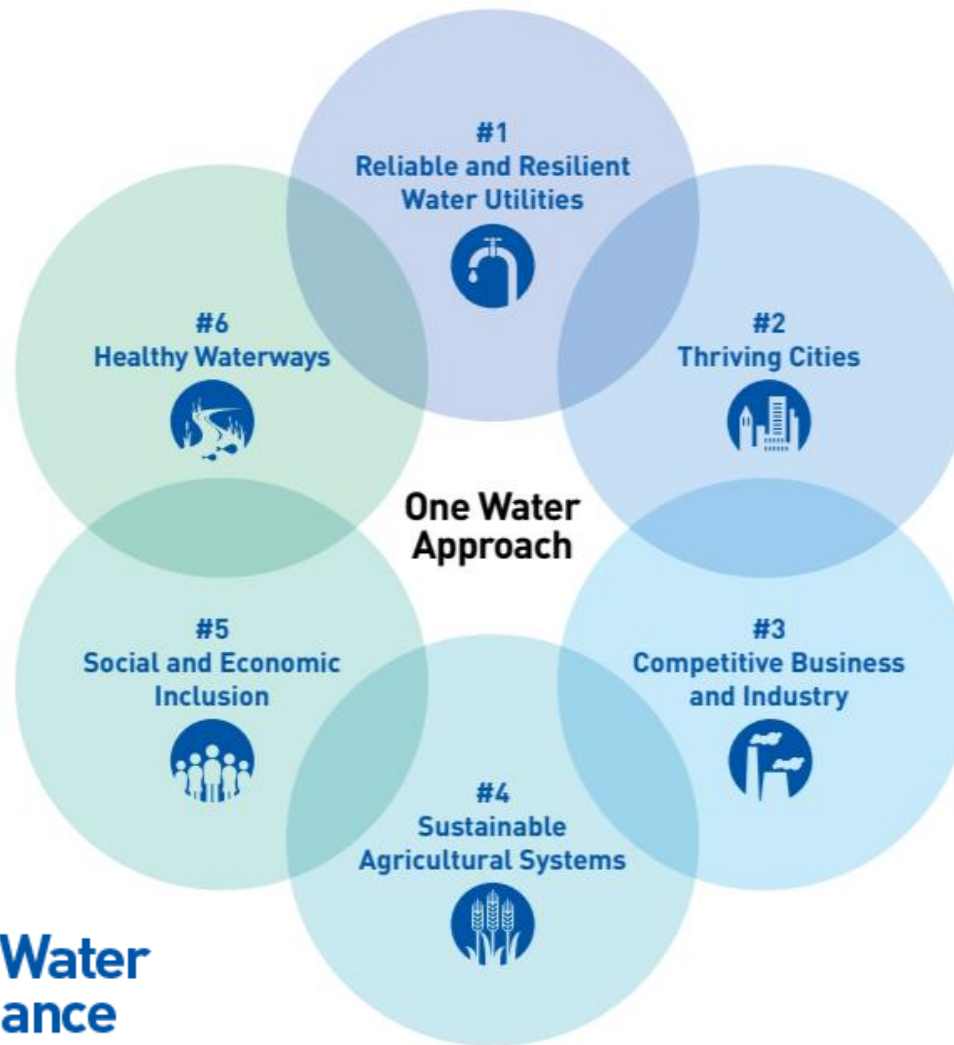
- What are you required to do?
  - Safe and Reliable Treatment and Conveyance of Water
- What are your vision and goals?
  - Economic Health
  - Public Perception
  - Community Leader
  - Technical Innovations
  - Sustainable Solutions



**What is important to your community?**



# One Water Concept



# Pillars of Water Equity



## Pillar 1



- All people have access to clean, safe, and affordable water services

# Pillars of Water Equity



## Pillar 2



- Maximize the economic, social, and environmental benefits of water infrastructure investment for the entire community

# Pillars of Water Equity



## Pillar 3



- Foster community resilience in the face of a changing climate





# Utilities of the Future: A New Paradigm

Past	Future
Handlers of water	Managers of sustainable resources
Seeking permit compliance	Watershed-scale environmental leaders seeking least-cost, highest return solutions
Engineers designing treatment plants	Regional planners of weather-resilient, green communities
Isolated public services units	Integrated members of economically thriving local communities



# What Factors Drive Decisions?

- Economic
- Political
- Community
- Regulatory
- Business



All decisions can be made with a Return on Investment

Water Levels in the Sandstone Aquifer (feet above sea level)



# Envision Sustainable Infrastructure Framework



## QUALITY OF LIFE

Purpose, Community, Wellbeing



## LEADERSHIP

Collaboration, Management, Planning



## RESOURCE ALLOCATION

Materials, Energy, Water



## NATURAL WORLD

Siting, Land and Water, Biodiversity



## CLIMATE AND RISK

Emission, Resilience





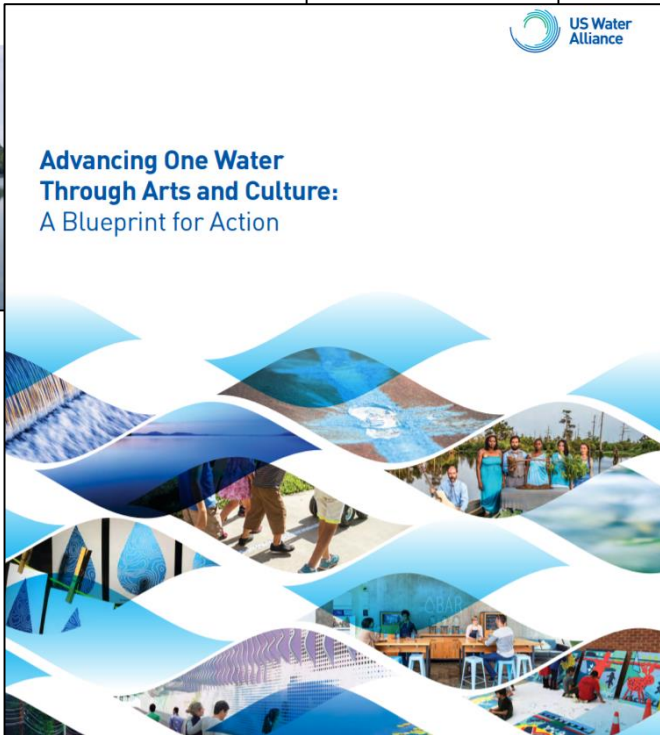
## Integrated Planning: Characterizing the Value of Water to Inform Decision-Making

## AN EQUITABLE WATER FUTURE A National Briefing Paper



Office of Wastewater  
Management  
August 2017  
EPA 830-R-17-001

## Advancing One Water Through Arts and Culture: A Blueprint for Action



## Estimating the Value of Water Resources: A Literature Review



Office of Wastewater  
Management  
August 2017  
EPA 830-R-17-004



**GREELEY AND HANSEN**

**Metropolitan Planning Council**

# Questions?

Andy Martin, PE, ENV SP

312-578-2364

[amartin@greeley-hansen.com](mailto:amartin@greeley-hansen.com)