



HIGH BRIDGE

A SOCIAL ENTERPRISE COMPANY

JULIA PLUMB, PROGRAM MANAGER, HIGH BRIDGE

MOLLIE DOWLING, EXECUTIVE DIRECTOR, OAI, INC.



HIGH BRIDGE

A SOCIAL ENTERPRISE COMPANY

High Bridge is a **transitional jobs** and **social enterprise** company, founded by OAI Inc., which will coordinate **green infrastructure installation and ongoing maintenance**, hiring **local labor** and helping advance technical skills for residents of the **Calumet** region.







WHO IS HIGH BRIDGE ?



in WORKFORCE DEVELOPMENT



- Thirty years of workforce education and training
- Trainings include brownfield remediation and green construction
- Millennium Reserve Industrial Jobs Strategy
- Mollie Dowling & Reggie Greenwood

OAI, Inc. is launching and incubating High Bridge

WHO IS HIGH BRIDGE?

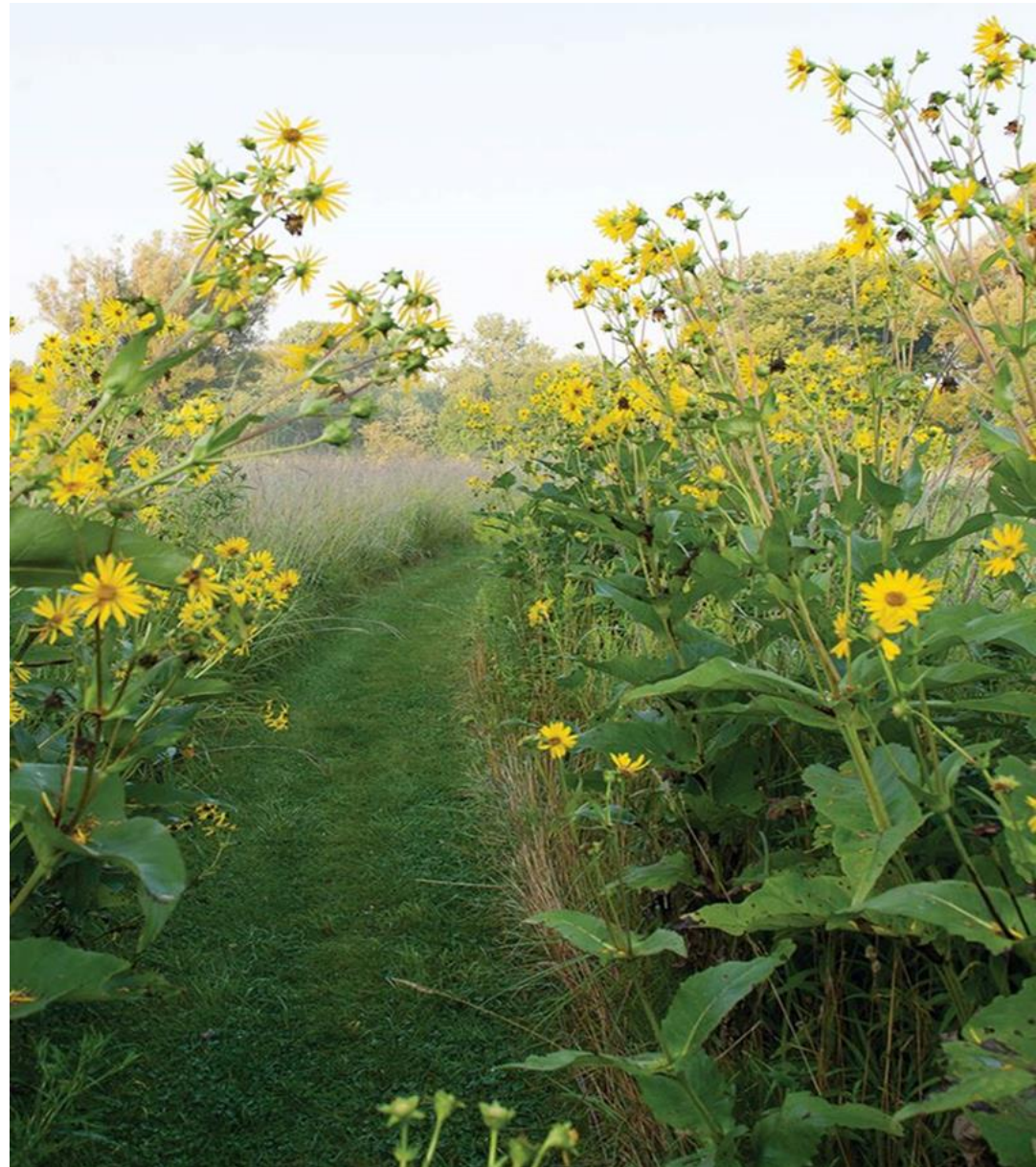


South Suburban Mayors and Managers collaborates on the **vision, ongoing development, and promotion** of High Bridge.

WHO IS HIGH BRIDGE?

- OUR STAFF

Julia Plumb
Program Manager



WHO IS HIGH BRIDGE?

- OUR STAFF

Julia Plumb
Program Manager



WHO IS HIGH BRIDGE?

- OUR STAFF

Julia Plumb
Program Manager



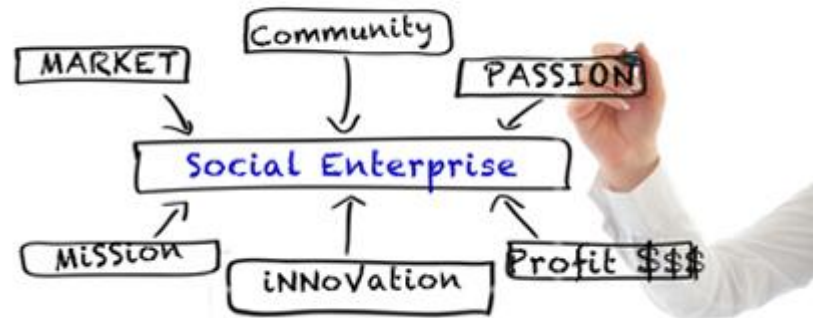
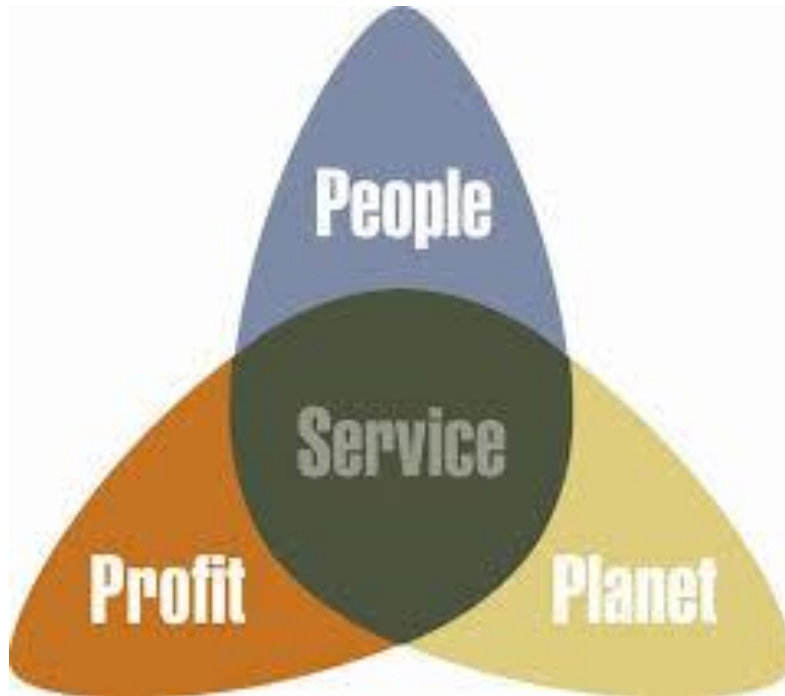
WHO IS HIGH BRIDGE?

- OUR STAFF



WHAT IS HIGH BRIDGE?

- a social enterprise effort



HIGH BRIDGE HIRES

We're Hiring NOW!

Hiring local residents from the communities where new green infrastructure investments are planned – interviewing in Blue Island and Park Forest in late April.

Crew will be laborers with some landscape training or experience, who need a supporting organization (High Bridge) to train them in additional green infrastructure treatments – leading to better paying, longer-term employment.

HIGH BRIDGE HIRES



- Do you have landscaping or horticulture skills that you'd like to move to a more technical and higher-skilled level?
- Are you interested in working to help improve the environment and lessen the flooding problems in south suburban communities?
- Are you driven to launch a career in an industry with a well-funded future and increased public and private investments?

Green Infrastructure Installation in Chicago's South Suburbs:

Jobs and Training for dedicated workers.

2015 Spring, Summer and Fall.

Position Requirements:

- One year of landscaping, horticulture or related restoration work.
- Be at least 18 years old.
- Be a resident of Blue Island, Calumet Park, Midlothian or nearby Little Calumet watershed communities (email with location question).
- Be fit enough to do physical outdoor work and lift at least 40 lbs.
- Have a state ID or driver's license.
- High School diploma or GED.
- Be drug-free.

Landscape installation and maintenance projects that labor crews—named High Bridge—will work on include:

- Installation of rain gardens
- Planting trees, shrubs and native wildflowers
- Grading new installation sites and installing new soil
- Installing rip-rap (boulders) to lessen water erosion and flow, and other permeable treatments
- Wetland enhancements and creation
- Native habitat features to attract birds and other pollinators and improve tree water quality.

How to Apply:

Call or email for an application form to fill out by 4/17/15; top candidates will be selected from these applications. We'll be holding local interviews in mid-April (early evening / weekend times)—check out our Facebook page for more details.

CONTACT HIGH BRIDGE:

High Bridge Co. / CA, Inc.
Office in Chicago and Park Forest
Office: 512-229-9006
Email: highbridge@cainc.org
FB: High Bridge Social Enterprise

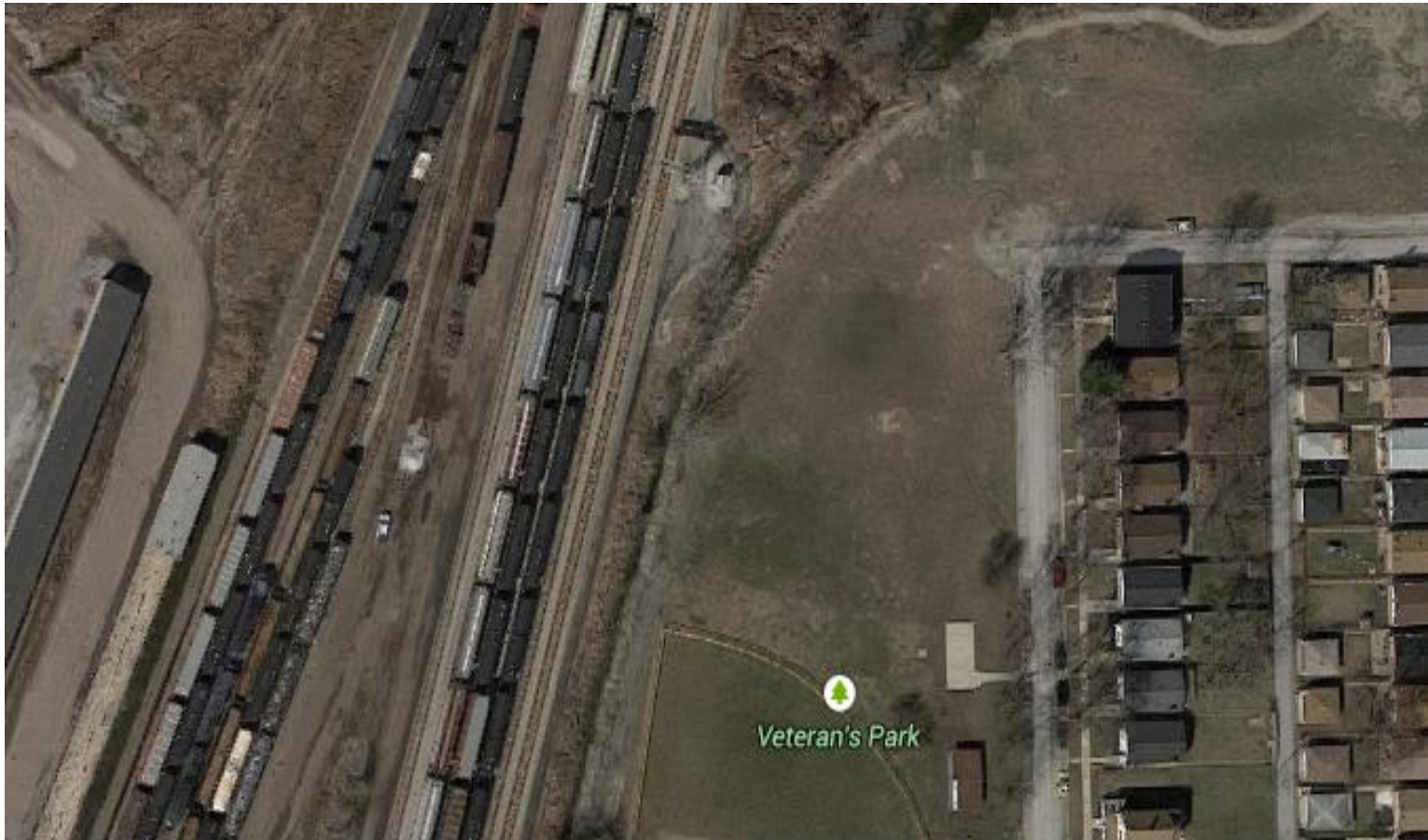
PILOT YEAR PROJECTS:

Three GLRI-funded projects:
1). Blue Island Parkway



PILOT YEAR PROJECTS:

THREE GLRI-funded projects:
2). Calumet Park – Veterans Park



PILOT YEAR PROJECTS:

THREE GLRI-funded projects:
 3). Robbins corner lot on S. Clair BLVD.



GREEN INFRASTRUCTURE SRF SUMMARY

RAIN GARDEN
 AREA: 2,100 SQUARE FEET
 VOLUME: 2,100 CUBIC FEET

Category	Pre-Construction	Post-Construction
Volume	0	2,100

2 = National efficiency standards

ACTIVE PLANTING

AREA: 0.15 ACRES
 VOLUME: N/A

Category	Pre-Construction	Post-Construction
Volume	0	N/A

2 = National efficiency standards



SOUTH DAKOTA PROFESSIONAL ENGINEERS & ARCHITECTS
 301 W. 10TH STREET
 SIOUX FALLS, SD 57104
 PROJECT NO. 13-001
 SHEET NO. 13-001-03
 DATE: 08/20/13

PILOT YEAR PROJECTS:

THREE GLRI-funded projects:
3). Robbins corner lot on S. Clair BLVD.



OTHER PILOT YEAR PROJECTS

- South Suburban College
- Midlothian Triangle
- Blue Island Multi-acre park off of 119th St. – green infrastructure components
- Other County-initiated green infrastructure treatments on redeveloped industrial sites
- South Suburban Land Bank Development Authority

MAINTENANCE



DEVELOPMENT STRATEGY



PARTNERSHIPS



South Suburban Land Bank and Development Authority

THANK YOU

Julia Plumb,

Program Manager

jplumb@oaiinc.org

312.528.3506

Mollie Dowling,

Executive Director

mdowling@oaiinc.org

312.528.3555



**HIGH
BRIDGE**

A SOCIAL ENTERPRISE COMPANY