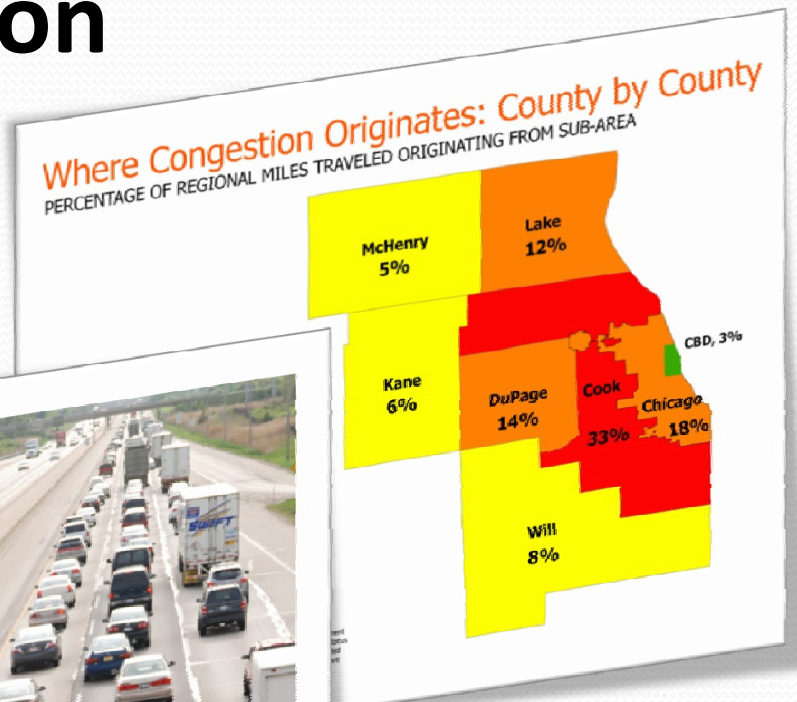
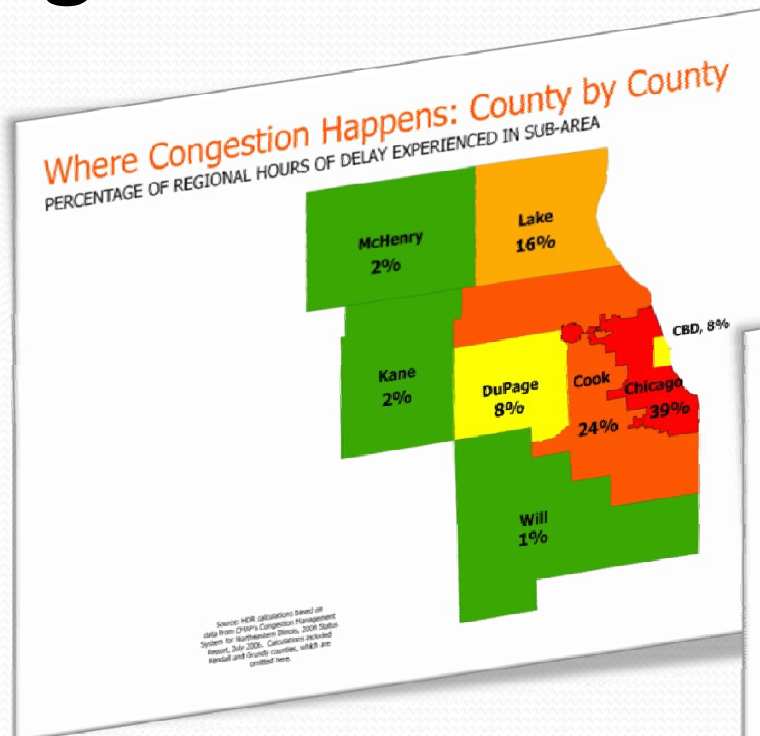


Chicago Region Congestion Pricing Study


Metropolitan Planning Council



Congestion in the Region

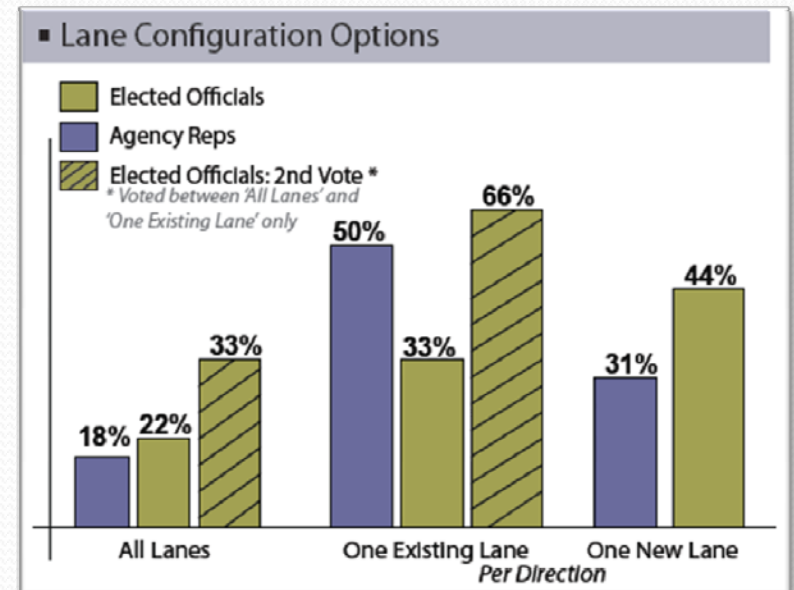
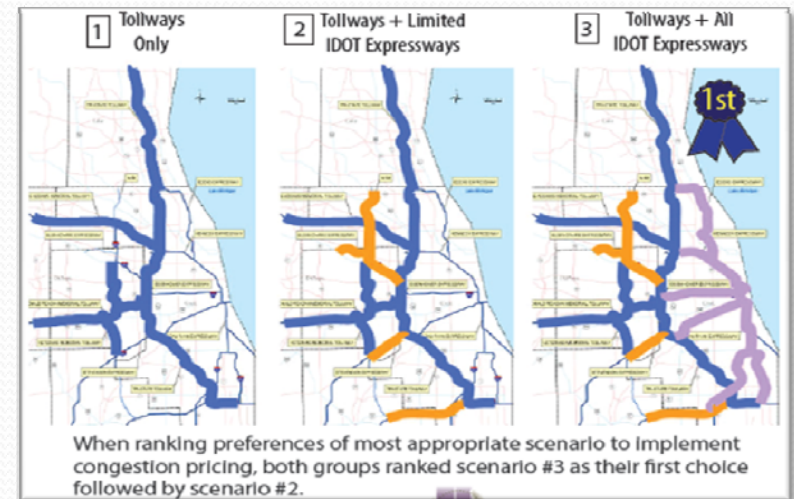


Traffic costs the region \$7.3 billion

- \$33 million environmental damages
- \$354 million in wasted fuel
- \$6.9 billion in wasted time

Chicago Region Congestion Pricing Study

- 2nd Study, Funded by FHWA
- Assess potential of congestion pricing to manage traffic demand
- Illinois Tollway Routes and Chicago Expressways
- Evaluate travel/traffic impacts and toll revenue
- Outreach and Education



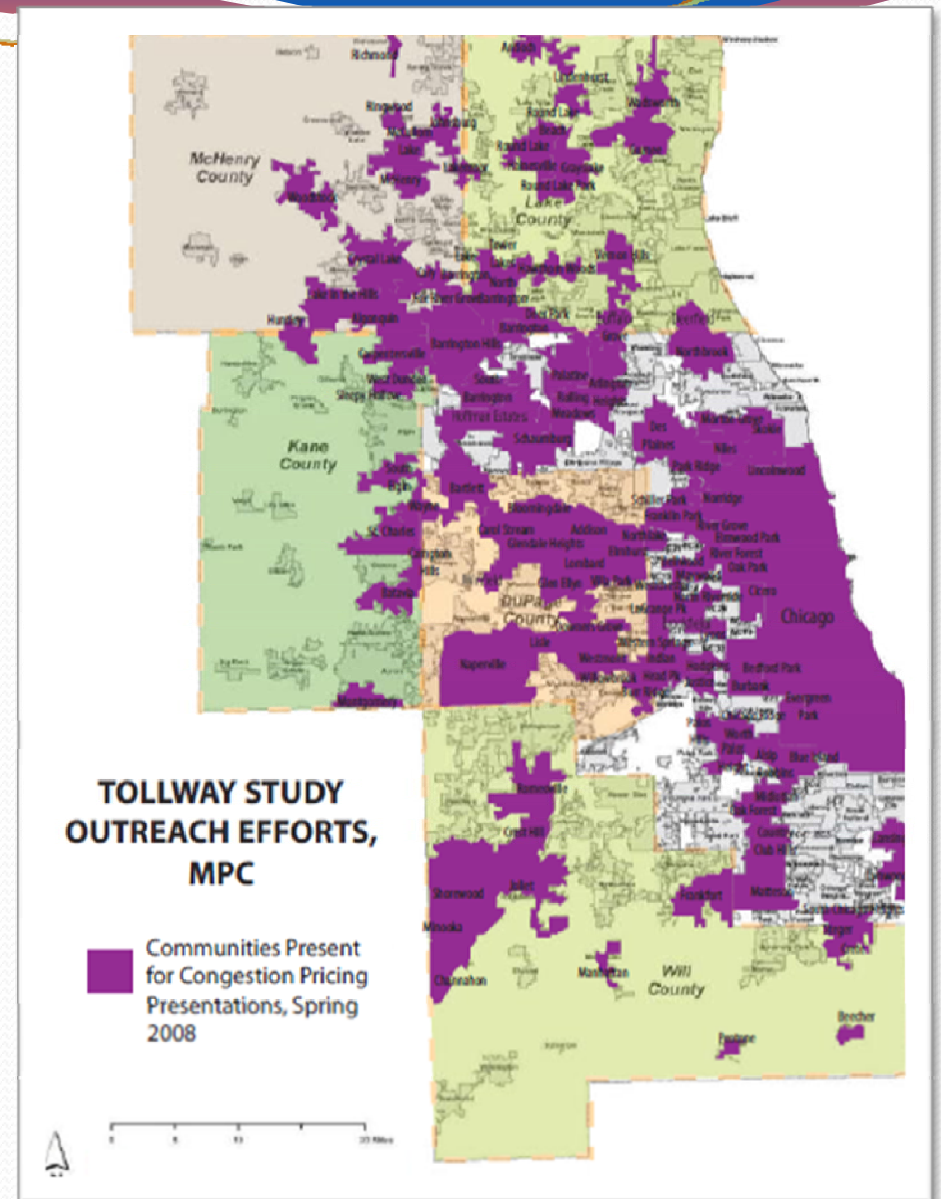
Outreach and Traveler Opinions

Toll Attitudes:

- Chicago travelers have higher willingness to pay tolls and to use toll roads
- Chicago has a robust transportation system
- Chicago has tolled roads for more than 50 years
- Household income is strongly associated with toll attitudes

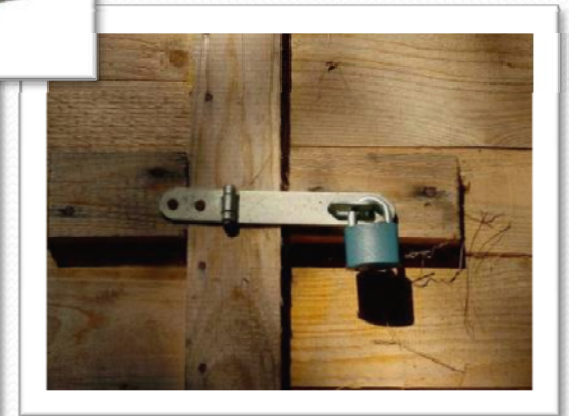
Environmental Attitudes:

- Chicago travelers are not outstanding in their environmental attitudes
- However, there are some regional differences

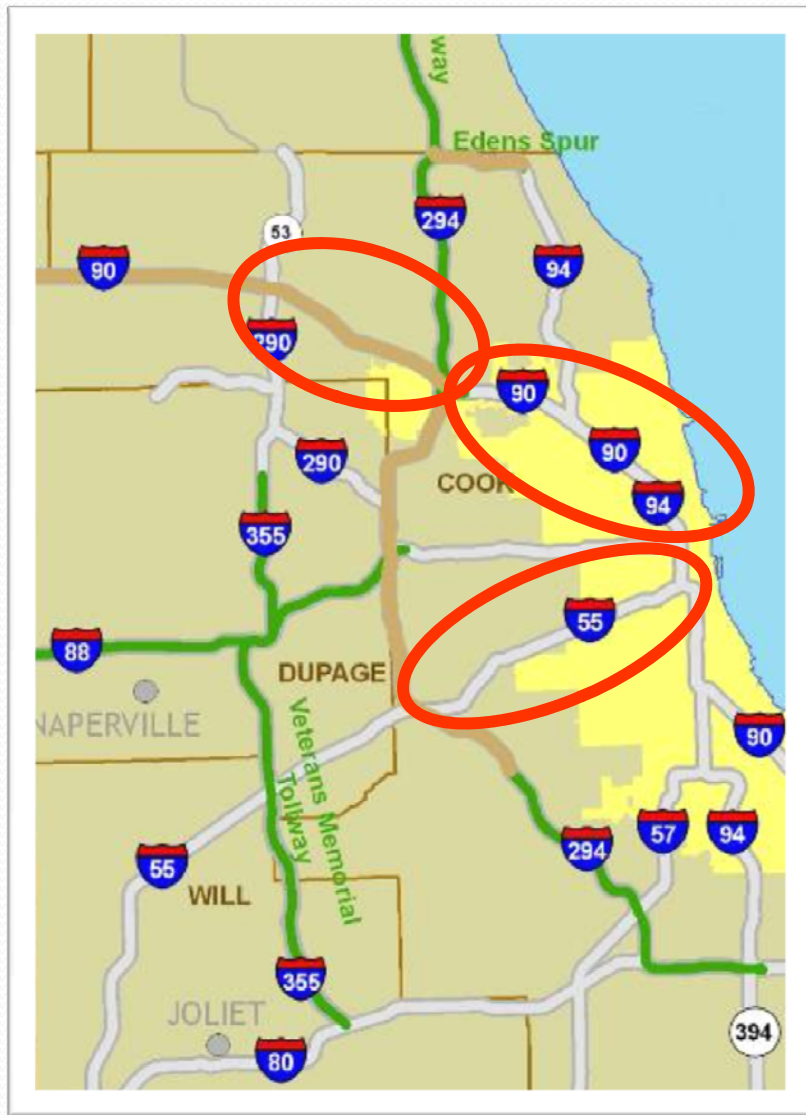


Goals, Benefits and Obstacles

- Congestion Reduction
- Environmental Benefits
- Travel Options
- Revenue Generation



Top 3 Finalist Corridors



I-90 (Kennedy) Reversible Lanes

- 65% selected as #1 corridor
- Convert Existing Reversible Lanes

I-90 (Jane Addams Memorial Tollway)

- Selected by 55% of participants
- Build new as Managed Lane
- On-Going Transit Study (STAR)

I-55 (Stevenson)

- Selected by 45% of participants
- Add new as Managed Lane
- HOV Planned in 90's

Jane Addams Memorial Tollway (I-90): Savings and Costs

	From	To	Dist. (mi)	You'll be traveling		If you pay	You will travel		Drivers in remaining "free" lanes also benefit	They will travel	
				(mph)	In (min)		(mph)	In (min)		(mph)	In (min)
AM Peak EB/Inbound	IL 25	IL53/ I-290	12.1	12.4	58.7	\$3.27	59.1	12.3		32.1	22.6
	IL 53/ I-290	I-294	9.7	57.6	10.1	\$2.62	62.0	9.4		40.8	14.3
PM Peak WB/Outbound	IL 25	IL 53/ I-290	12.1	18.2	40.0	\$2.06	57.4	12.7		48.4	15.0
	IL 53/ I-290	I-294	9.7	50.8	11.4	\$2.91	55.0	10.6		36.6	15.9

PM Rush Hours



+
\$2.06 at 57mph



=
12.7 minutes faster

Criteria for Solutions



- Cost of solution cannot exceed cost of congestion
- Balance needs of business, society and environment
- Must be regional in scope – network systems
- Address congestion on expressways and arterials
- Address wasted time and fuel – options
- Sustainable source of funding
- Maximize Technology

Thank You

Metropolitan Planning Council

