



Introduction to the
Natural Solutions Tool Process
a project of the
Chicago-Calumet River
Watershed Council

CHICAGO CALUMET RIVER WATERSHED COUNCIL

Steering Committee Participants:



What We Heard from Workshops

“Usually a **lack of funding** and **overall coordination efforts.**”

“There is broad focus and **collaboration** on GSI maintenance. There are **multiple avenues** to pursue GSI including shared services, trained volunteer teams, trained DPW staff, etc.”

“**A lead organization** to wrangle us all into a group to talk about all our roles in a solution.”

“Organizational and staff **capacity.**”

“**Competing Priorities** and **cash-strapped** government agencies.”

“**Combined efforts** to **implementing** projects that reduce flooding and improve water quality.”

“**Working in silos**, **lack of shared resource opportunities/mechanisms.** Jurisdictional limitations”

“A **watershed wide work plan** has been development that identifies hundreds of acres of open space for restoration, with additional **priority restoration projects** in motion.”

“To work in a **collaborative manner** to continue to achieve our mission”

“Obtaining support/buy-in from key implementers (gov & non-gov agencies); **sustainable funding**; **coordination** and **capacity.**”

CHICAGO CALUMET RIVER WATERSHED COUNCIL

Elevating & connecting existing efforts

Get RainReady with NATIVE PLANTS

Water Flow Regulation / Flood Control

THE Green Neighbor GUIDE

CITY OF CHICAGO GREEN STORMWATER INFRASTRUCTURE STRATEGY

NORTH BRANCH CHICAGO RIVER WATERSHED-BASED PLAN

CALUMET STORMWATER COLLABORATIVE

Green Infrastructure Partnership Opportunity Program

North Branch Chicago River Watershed Work Group

Lower Des Plaines Watershed Group

Cal-Sag Watershed Planning Council

Calumet Stormwater Collaborative

CRWC

Lake

Lake

Apply Online

Download Fillable Application

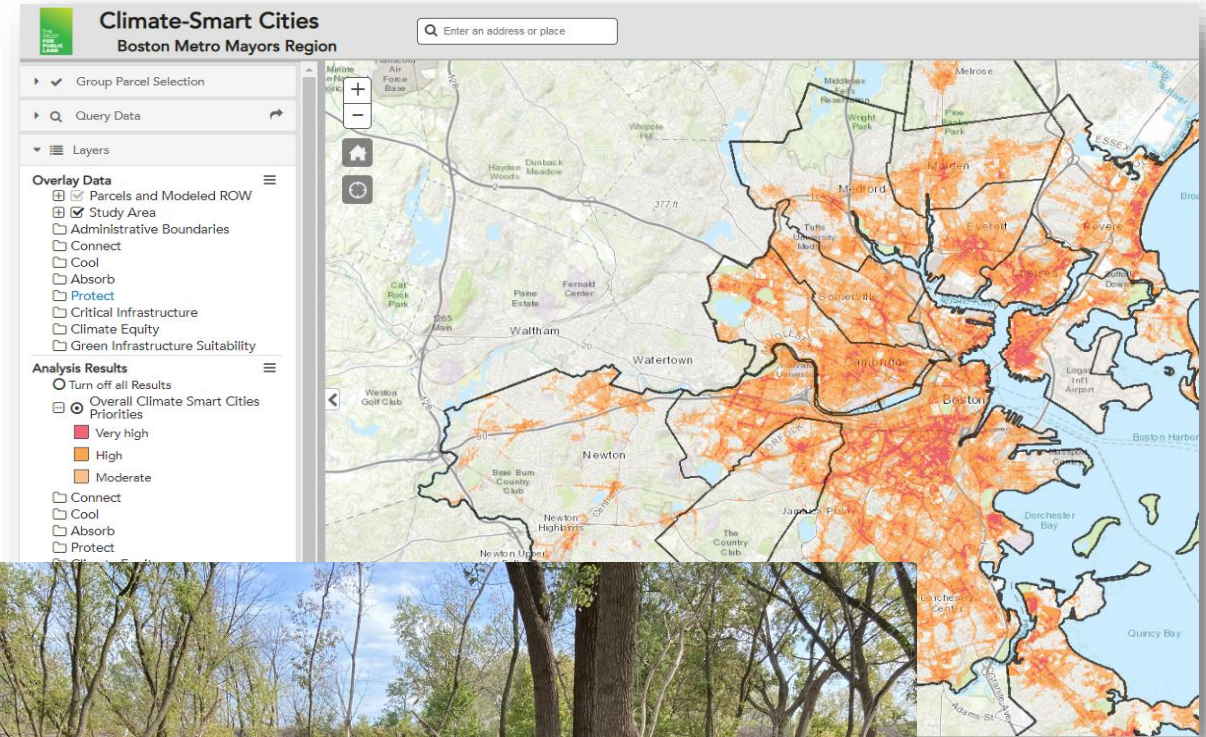
Watershed Council Goals, Purpose & Process

- Collaborative regional watershed-based stormwater management
- Cross jurisdictional cooperation
- Multi-benefit nature-based stormwater solutions
- Create tools for strategic and coordinated investments



Current Projects & Tasks

1. Better understand need through co-created watershed project prioritization mapping tool: **Natural Solutions Tool**
2. On-the-ground pilot project identification and implementation: **Restoration project at Indian Ridge Marsh South**
3. Research of methods for **coordinated capital planning** and joint projects based on national models



CHICAGO CALUMET RIVER WATERSHED COUNCIL

Indian Ridge Marsh South



PS 156 Waverly and LS 392 Brooklyn, NY

We saw these barren asphalt schoolyards and we recognized an amazing opportunity to reinvent them as vibrant city parks.

Photo by: Joe Martinez



About Us



Connecting everyone to the outdoors™

Mission

The Trust for Public Land creates parks and protects land for people ensuring healthy, livable communities for generations to come.



Communities that place a high value on **OUTDOOR ACCESS FOR ALL ARE**



HEALTHIER



MORE RESILIENT



MORE EQUITABLE

OUR COMMITMENTS



HEALTH

We create opportunities for everyone to experience the physical and mental health benefits nature provides, from close-to-home parks to awe inspiring outdoor experiences.



EQUITY

Everyone needs access to the benefits of nature. Working hand in hand with communities, we are closing the park equity gap by creating parks and protecting land where it's needed most.



CLIMATE

The parks we create and the lands we protect safeguard people from extreme heat, poor air and water quality, flooding, and sea level rise, making communities more resilient and prepared for change.



COMMUNITY

We work alongside community members and leaders to create, protect and advance the outdoor places and spaces that are essential to everyone's well-being.

OUR INITIATIVES



LANDS

We work with landowners, partner groups and public agencies to acquire, create access to, and secure public ownership and stewardship of the lands and waters that make our communities great places to live, work, and play.



TRAILS

Working with communities, we are creating and protecting trail systems across the country. Urban, suburban, and rural trails connect people to nature, recreation, schools, workplaces, and their broader neighborhood.



PARKS

Working alongside youth and community members, equitable development entities and builders, we create parks that reflect and serve local communities and connect people to nature and to each other.



SCHOOLYARDS

We work in partnership with students, parents, and communities to redesign and create schoolyards that are open to the public, serving as a hub for community empowerment, improved health and education, and climate resiliency.

OUR TOOLKIT



ADVOCACY



**DATA AND
INSIGHT**



**FUNDING AND
LEVERAGE**



**PUBLIC LAND FOR
PUBLIC GOOD**



**PARK CREATION AND
TRANSFORMATION**

Natural Solutions Tool Overview

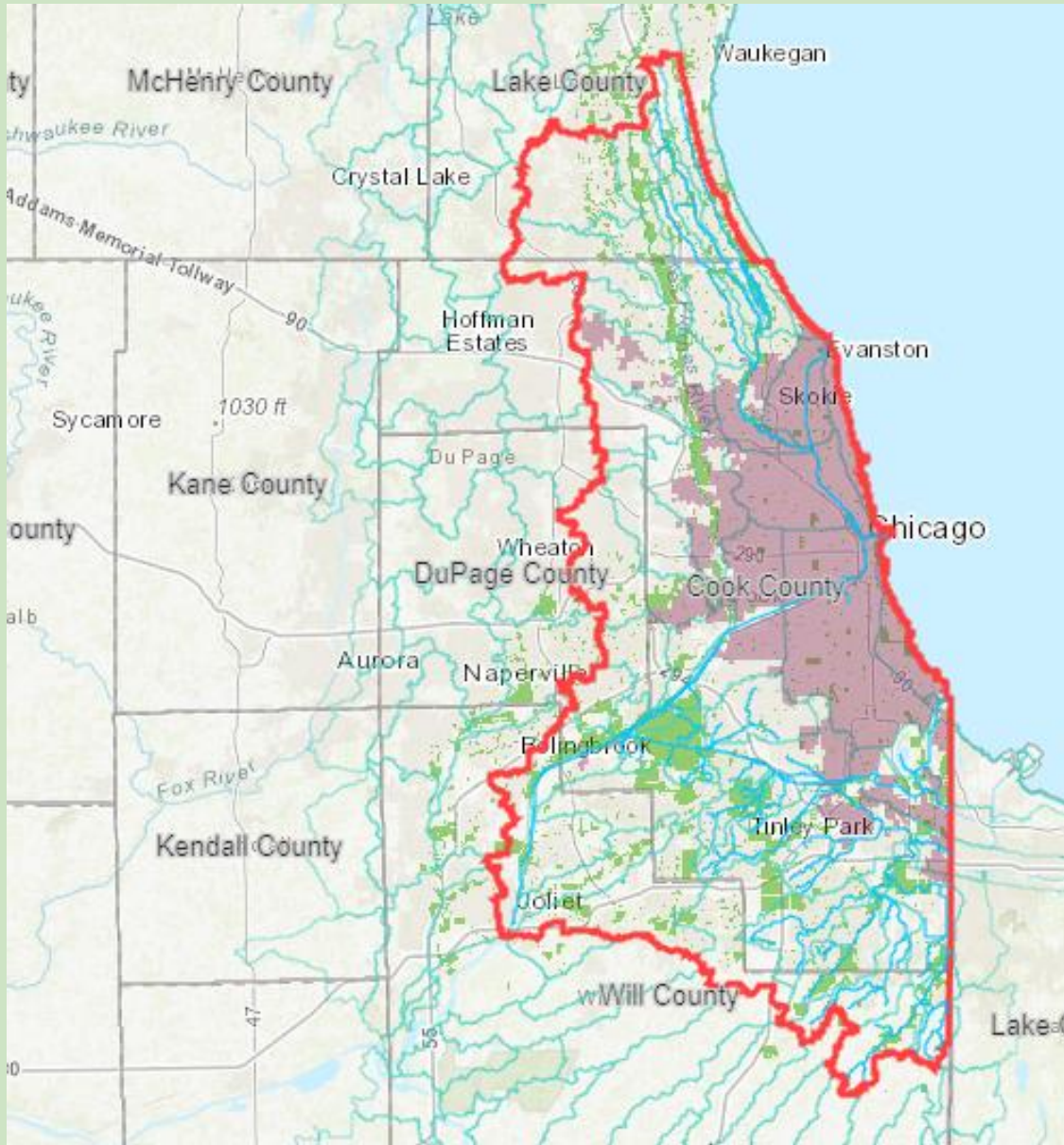
Calumet Stormwater Collaborative

April 1, 2022



Connecting everyone to the outdoors™

Draft Study Area



Tool Functionality

- Overlay data
- Analysis results
- Parcel level analysis and reports
- Scenario tool
- Query parcels and ROW
- 10-minute walk impact report



Draft Modeling Objectives

- Healthy
- Equitable
- Natural
- Connected
- Resilient



Connecting everyone to the outdoors™

CHICAGO CALUMET RIVER
WATERSHED COUNCIL

Natural Solutions Tool

Creation Process

Alliance for the Great Lakes	Sara	Brodzinsky	Illinois Research Climate/UIUC	Ashish	Sharma
Arcadis, Inc.	Horacio	Martinez	Illinois Research Climate/UIUC	Hamed	Ibrahim
Center for Neighborhood Technology	TBD		Lake County Forest Preserves	Matt	Ueltzen
Chicago Metropolitan Agency for Planning	Kelsey	Pudlock	Lake County Stormwater Management Commission	Mike	Prusila
Chicago Park District	Cathy	Breitenbach	Metropolitan Planning Council	Ryan	Wilson
Chicago Wilderness	Ted	Haffner	Metropolitan Water Reclamation District	Moriah	Gelder
City of Chicago Dept of Planning and Development	Jamie	Osborne	Openlands	Craig	Shillinglaw
City of Chicago Dept of Public Health	Raed	Mansour	South Suburban Mayors and Managers Association	Sarah	Kobetis
City of Chicago Dept of Transportation	Sean	Weidel	The Nature Conservancy	John	Legge
City of Chicago Office of Sustainability	Gabriela	Wagener-Sobrero	The Wetlands Initiative	Paul	Botts
Cook County	Debra	Kutska	Trust for Public Land	Caroline	O'Boyle
Delta Institute	Megan	Lewis	Trust for Public Land	Taj	Schottland
Field Museum/CW	Mark	Johnston	Trust for Public Land	Brian	Taverna
Forest Preserves of Cook County	Steve	Silic	Trust for Public Land	Mitchell	Hannon
Friends of the Chicago River	Adam	Flickinger	US Environmental Protection Agency	Krista	McKim
GeoSyntec	Matt	Bardol	Water Lab/UIUC	Mary Pat	McGuire



Connecting everyone to the outdoors™



Natural Solutions Tool

Technical Advisory Team List

- Chicago-Calumet River Watershed Council's regional approach to conservation and restoration
- Chicago Recovery Plan which includes nearly \$87 million for environmental justice and the 2021 City Budget includes \$188 million for climate projects
- We Will Chicago Citywide Plan's guiding principles are Equity and Resiliency and the major pillars include Environment, Climate & Energy; Public Health & Safety; Transportation & Infrastructure
- Climate Action Plan for the Chicago Region has a focus on equitable climate adaptation
- Chicago Wilderness Green Vision prioritizes managing healthy landscapes, expanding green infrastructure, adding conservation lands, increasing access to nature, taking climate action, and protecting water quality
- MWRD Strategic Plan emphasizes "[mitigating] flooding across Cook County through a proactive, equitable stormwater management program"



TRUST FOR
PUBLIC
LAND™

CHICAGO CALUMET RIVER
WATERSHED COUNCIL

Discovery Process Outcomes

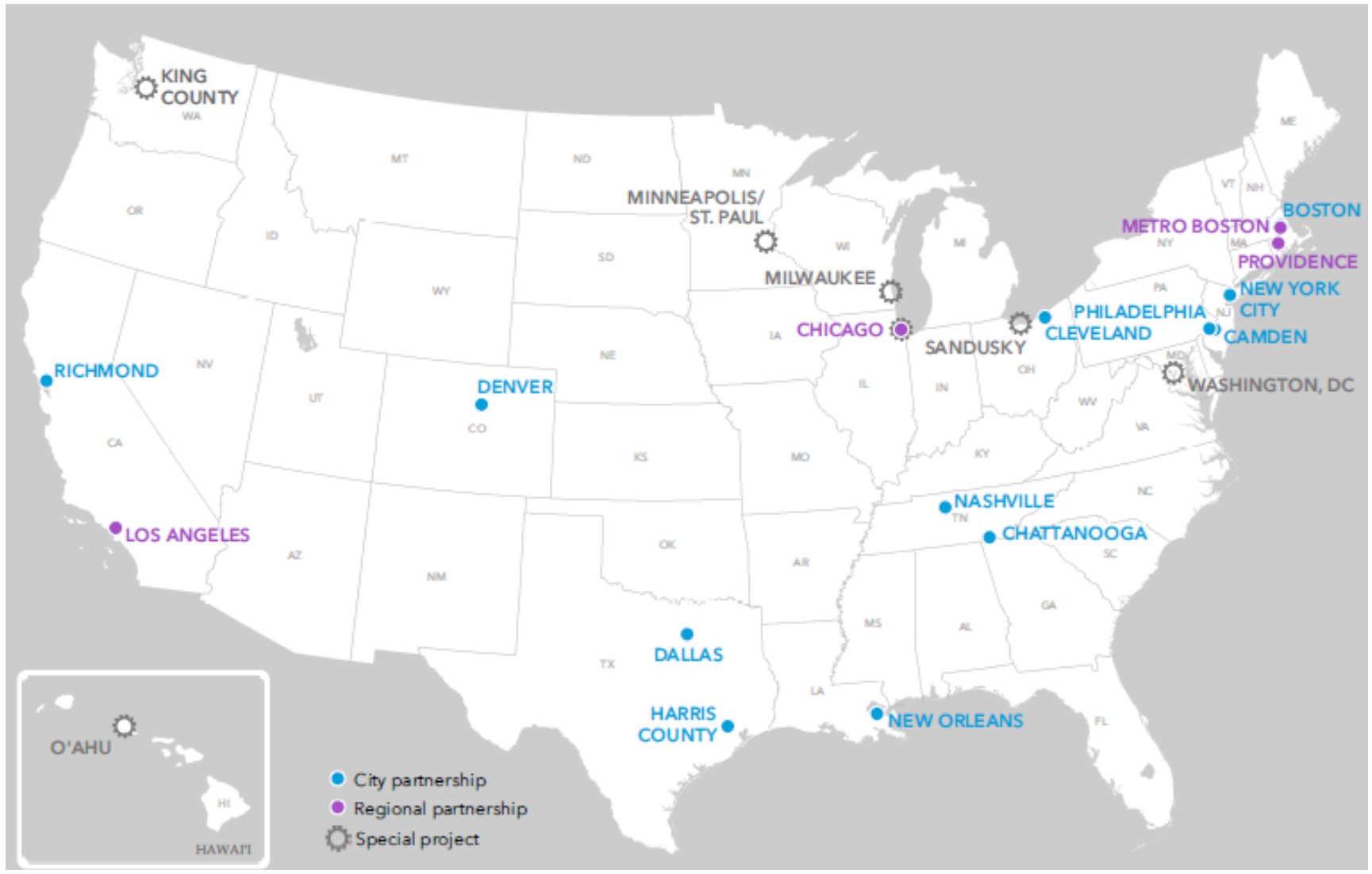
Alignment with Major Initiatives

Data Hubs <i>(a partial list)</i>	Data Layers and Tools <i>(a partial list)</i>
Chicago Data Portal	Calumet Connect <u>Databook</u>
Chicago Wilderness Hub	Calumet Reinvestment Mapping Tool
CMAP Data Hub	Chicago Health Atlas
Cook Central: Data Hub For Cook County	CNT Urban Flooding Baseline Project
<u>Dupage County Maps & Application Portal</u>	Green Infrastructure Vision 2.3: Ecosystem Service Valuation
Lake County, IL Open Data & Records Hub	Illinois State Water Survey
MWRD <u>Geohub</u>	Lake County Wetland Restoration And Preservation Plan Decision Support Tool
South Suburban Mayors And Managers Association GIS Portal	Productive Landscapes Public Web App
Will County GIS Division	The Chicago Region Stewardship Mapping And Assessment Project
	Tree Equity Working Group and Tree Equity Tool



Discovery Process Outcomes

Major Data Sources and Existing Geospatial Tools



**TRUST FOR
PUBLIC
LAND™**

Connecting everyone to the outdoors™

Existing Partnerships

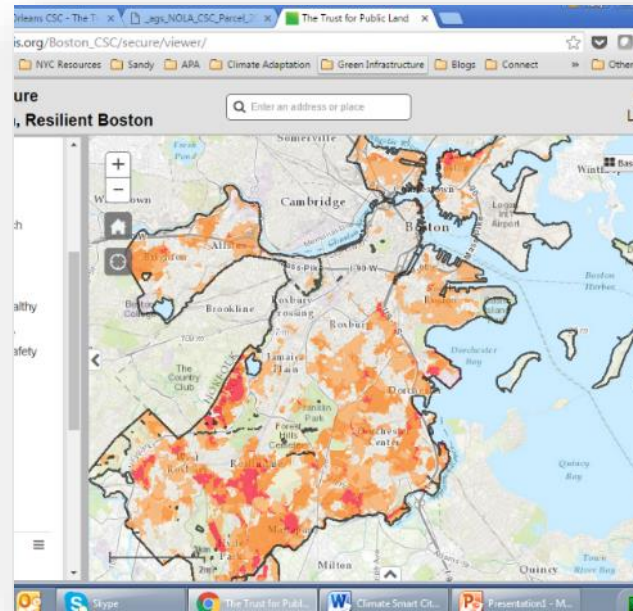
Implementation Case Studies

Creating a network of cities using similar data-driven planning resources

Coalitions



Policy and Planning



Project Development



Demonstration



Connecting everyone to the outdoors™