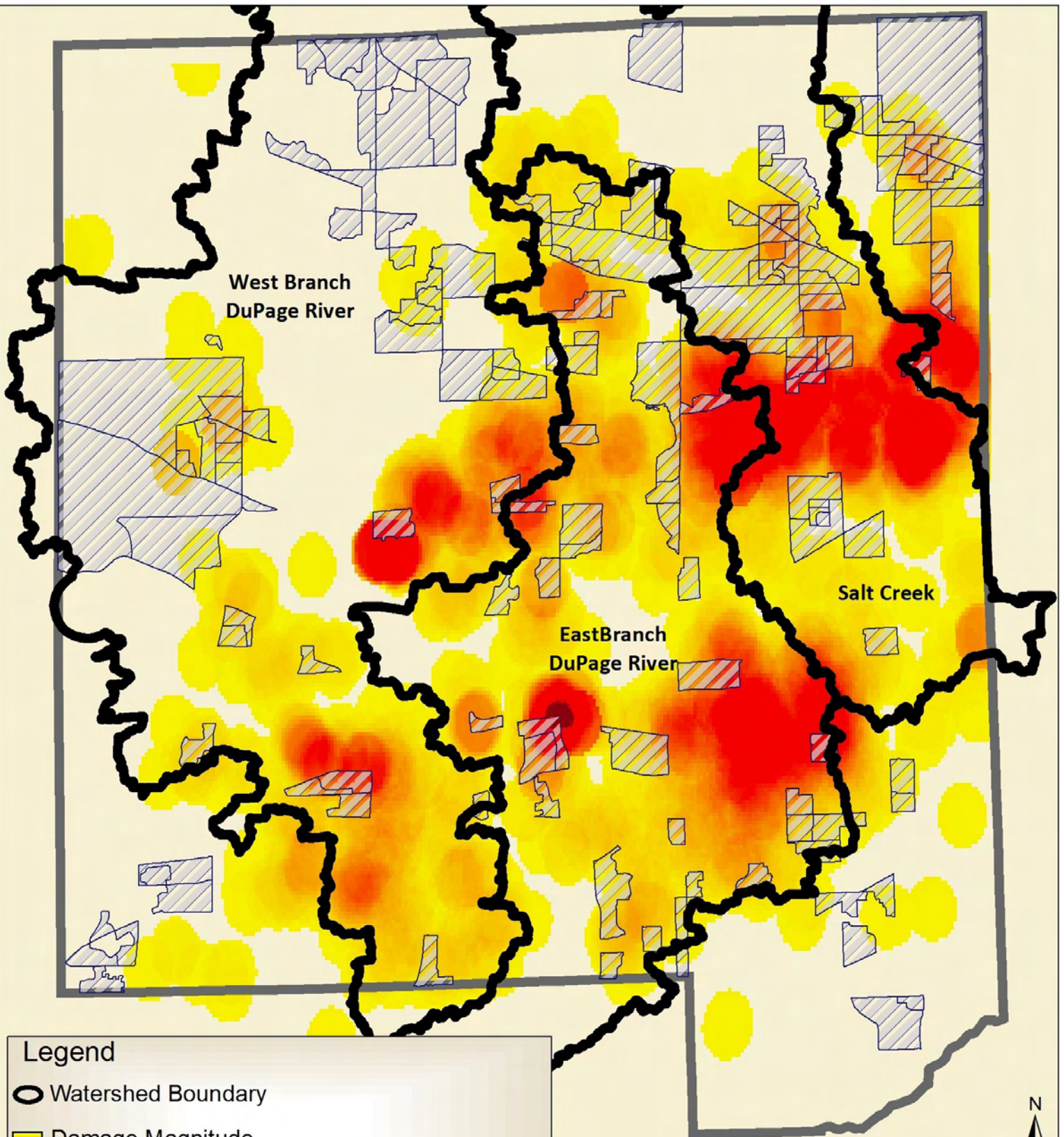


Damage Magnitude - April 18, 2013



Legend

○ Watershed Boundary

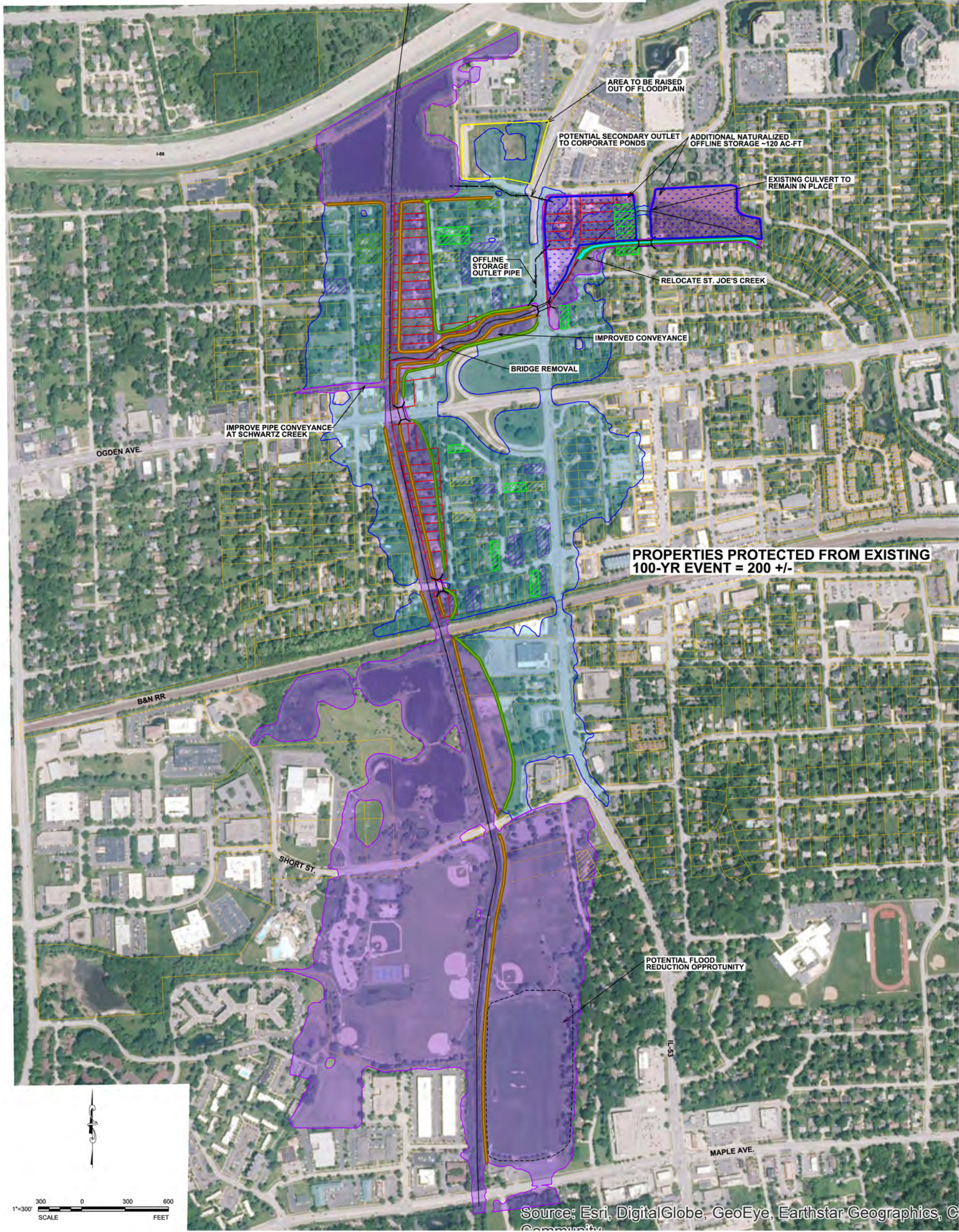
Damage Magnitude
(Low to High)

Low to Moderate Income Population%

0 1 2 4
Miles



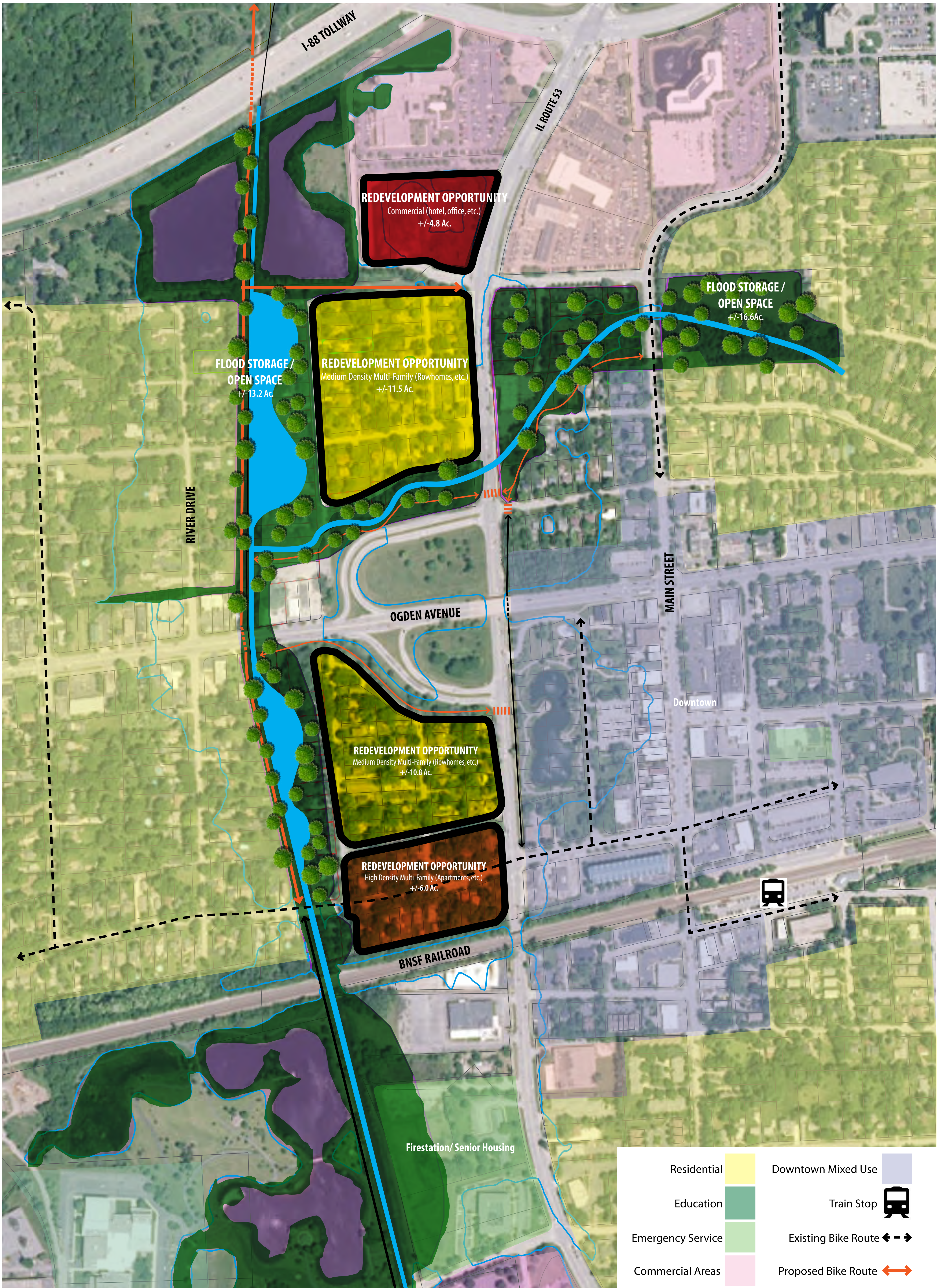
- PROPOSED LEVEE (1961 ELEVATION)
- EXISTING LEVEE
- PROPOSED 100-YR INUNDATION (FEQ MAX WSE)
- EXISTING 100-YR INUNDATION (REGULATORY FIS BFE)
- CDBG-DR_LowIncome (5)
- CDBG-DR_StrategicBuyouts (11)
- LISLE_HMGP (14)
- DUPAGE COUNTY_HMGP (2)
- LISLE_HMGP_ALTERNATES (15)
- CURRENT CONCEPTUAL BUYOUTS (56)



Source: Esri, DigitalGlobe, GeoEye, Earthstar Geographics, © Community

0.0	CONCEPTUAL RESILIENCY IMPROVEMENTS	PROJECT NO.: 15109	DESIGNED BY: DLM	SEAL:	REVISIONS
	EAST BRANCH DUPAGE RIVER RESILIENCY	FILE NAME: ProEastBranch	DRAWN BY: BAO		
LISLE	ILLINOIS	ORIGINAL ISSUE DATE: 7/10/2015	CHECKED BY: GVW		
		SCALE: 1" = 300'	PROJECT MANAGER: DLM		

V3 Companies
 7325 Janes Avenue
 Woodridge, IL 60517
 630.724.9200 phone
 630.724.9202 fax
 www.v3co.com



Redevelopment Diagram

East Branch of DuPage River Resiliency Project

Lisle, Illinois

PREPARED FOR:
V3 Companies

ISSUE DATE: September 21, 2015
All drawings are preliminary and subject to change.
© 2015 Hitchcock Design Group