

GRIP: Gary and Region Investment Project

*Metropolitan Planning Council
The Times of Northwest Indiana*



Hypothesis

By working *together* on *key* transformative projects we can move the NW Indiana *region* forward.

- Connecting to existing transportation and environmental assets
- Coordinating and marshalling local, state, federal and private resources
- Connecting and consolidating land uses
- Leveraging catalytic projects to spark additional adjacent investment

Change is Possible

“If you want to go fast: go alone.
If you want to go far: go together.”
African Proverb

Lakefront



Lakefront



1950



2000s

Grant Park

Metropolitan **Planning Council**

THE TIMES

Photo Left: <http://www.friedmanfineart.net/lib/img/chicago/3/20.jpg>
Photo Right: <http://members.virtualtourist.com/m/p/m/3ae900/>

Elevated Highways



Cline Avenue

Elevated Highways



1950s

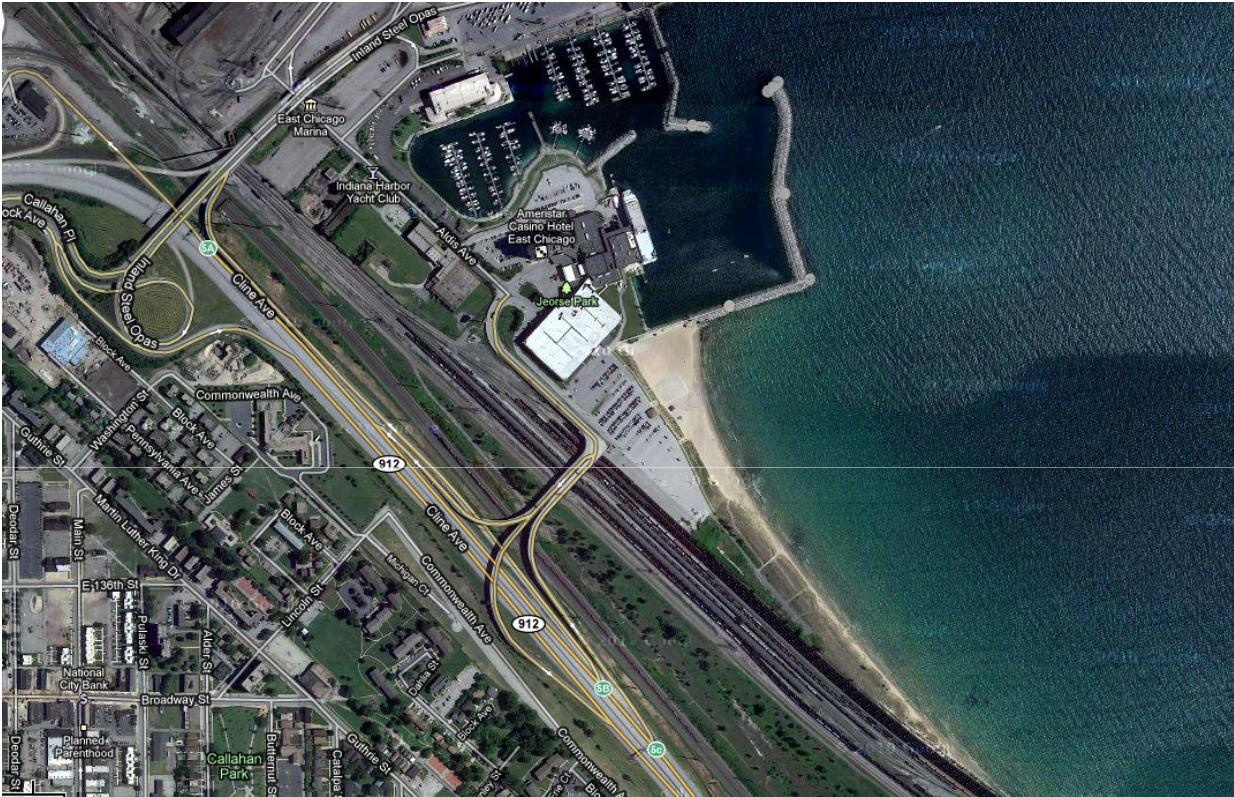


2003

Embarcadero Freeway San Francisco, CA

Metropolitan  Planning Council THE TIMES

Waterfront Reclamation



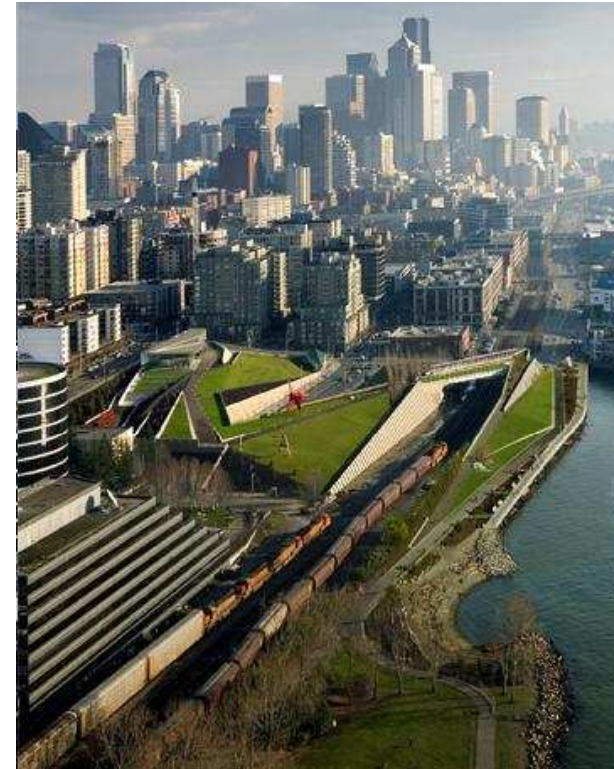
Gary/East Chicago South Shore Redevelopment Plan

Photo: <http://www.glc.org/announce/06/pdf/Monroe-small.pdf>

Waterfront Reclamation



1999



2007

**Seattle Olympic Sculpture Park
Seattle, WA**

Metropolitan **Planning Council**

THE TIMES

Waterfront Reclamation



Lincoln Park Neighborhood



Lake Place Park

Interstate 35 Duluth, MN

Metropolitan **Planning Council** THE **TIMES**

Photo Left: MPR Photo/Bob Kelleher <http://minnesota.publicradio.org/display/web/2010/04/13/i35-duluth-mess/>

Photo Right: <http://www.duluthnewtribune.com/media/full/jpg/2010/05/07/i-35-lakeplace-park.jpg>

Inset: Jon B. DeVries

Transit Investments



Hammond/Whiting
Amtrak Station



Gary NICTD Station

Transit Investments



Before



After

Portland, Oregon

Urban Center Transformation



Gary's Broadway Corridor

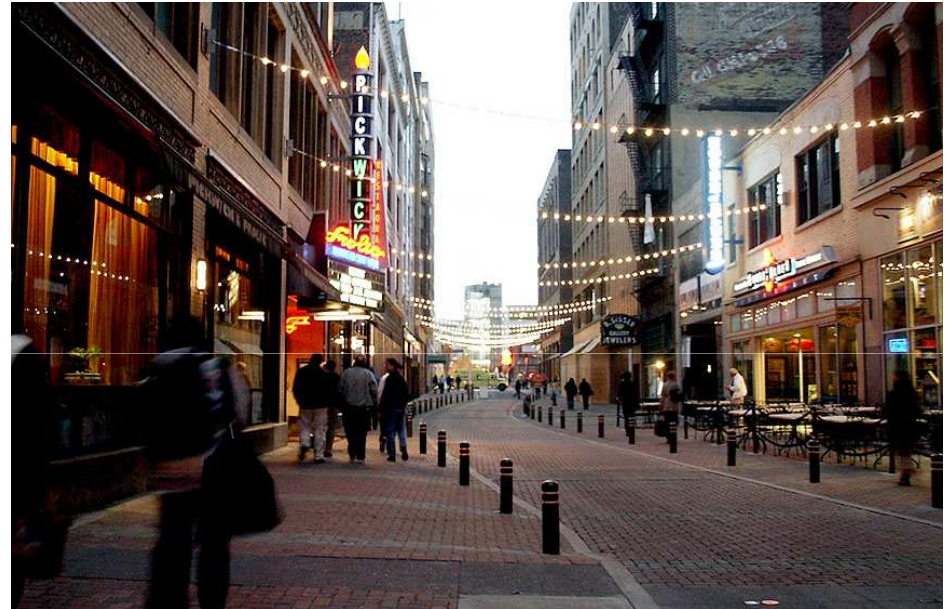


Downtown Gary

Urban Center Transformation



Before



After

Downtown Cleveland – Euclid and 4th avenues

Hypothesis

By working *together* on *key* transformative projects we can move the NW Indiana *region* forward.



Immediate Next Steps

GRIP Launch

- Solicit feedback on transformative opportunities
- Receive guidance on new federal investment strategies
- Learn from national models
- Identify criteria for selecting transformative opportunities



Thank you!

For more information contact Peter Skosey at 312.863.6004 or pskosey@metroplanning.org.

Visit our web site at metroplanning.org.