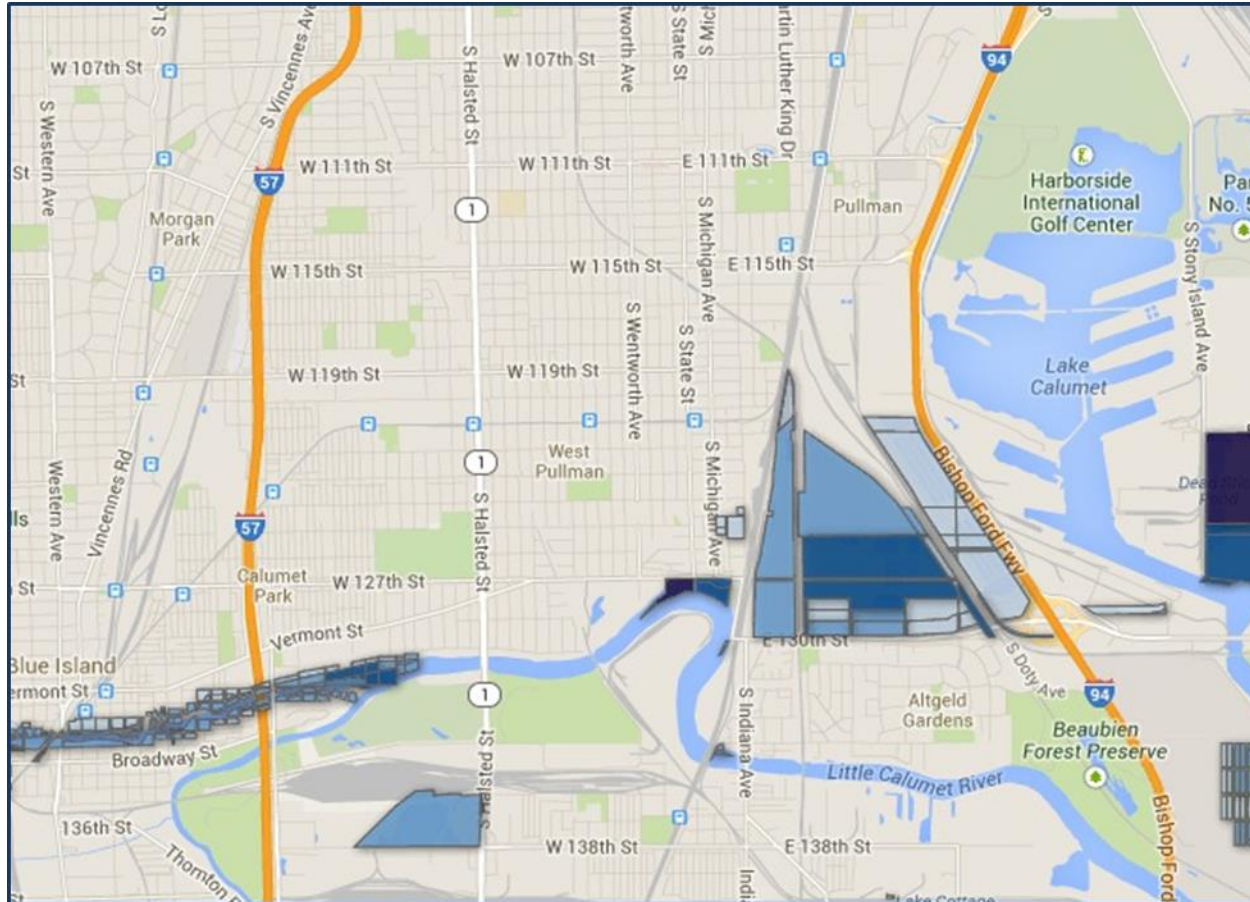


# Land Use Project for the MWRD



openlands  
conserving nature for life

Friends of the Chicago River  


# Larger Initiative: Revitalizing Chicago's Waterways



# Kickapoo Woods: Habitat Enhancement with a Stormwater Focus



# Space to Grow – Grissom Elementary



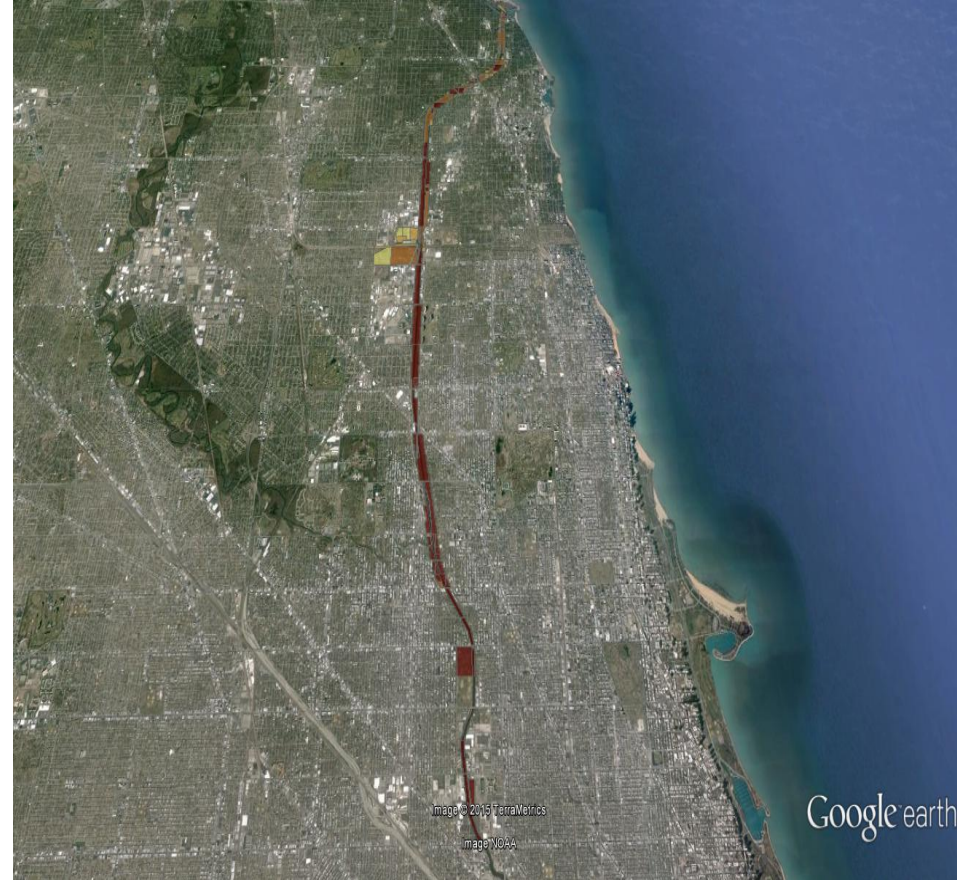


GRISSOM ELEMENTARY SCHOOL

# The Tool Illustrates Opportunities

## Lease and Program Opportunities:

- Lease requests: Deeper understanding, organized visually and spatially, a parcels potential impact on stormwater, recreation, and habitat
- Shared vision of the Collaborative: Illustrates cross-boundary opportunities to enhance recreation, conservation and stormwater management in the Calumet region.



# Variety of Data

## Stormwater Management

---

High Risk Flood Zones

---

Rapid Permeable Soils

---

Induced Stormwater Infiltration

---

Combined Sewer Outfall Sites

---

Green Infrastructure Vision 2.0

---

Illinois Coastal Management Program

---

CMAP 2005 Land Use Inventory Open Space Designation

---

Inventory of Best Management Practices in Chicago

---

ParkScore Index (Trust for Public Land )

---

City of Chicago Inventoried Potentially Vacant Land

---

Chicago Public School Grounds

---

Community and School Gardens in Chicago

---

City of Chicago: Green Roofs

---

Chicago Boulevards

---

Chicago Malls and Plazas

## Conservation

---

Green Infrastructure Vision 2.0

---

Illinois Natural Areas Inventory Sites

---

Illinois Nature Preserves Commission: Protected Land

---

Illinois Listed Threatened or Endangered Species

---

Audubon Important Bird Areas

---

Biological Stream Survey (Streams Rated B or Higher)

---

Chicago Nature Areas Directory

---

Illinois Coastal Management Program Boundaries

---

CMAP 2005 Land Use Inventory Open Space Designation

---

Calumet Open Space Reserve Management Units

---

Land leased or owned by Forest Preserves

---

National Conservation Easement Database

---

National Wetland Inventory

## Recreation

---

Green Infrastructure Vision 2.0

---

Northeastern Illinois Regional Greenways Trails Plan

---

Northeastern Illinois Regional Water Trails Map

---

CMAP 2005 Land Use Inventory Open Space Designation

---

Land leased or owned by Forest Preserves

---

Audubon Important Bird Areas

---

Chicago Natural Areas Inventory

---

Chicago Public School Grounds

---

Illinois Coastal Management Zones

# Stormwater Values

## Areas of Concern, Opportunity and Potential Partnerships



High Risk Flood Zones



Rapidly Permeable Soils



Induced Stormwater Infiltration



Illinois Coastal Management Program



Chicago Boulevards



City of Chicago Inventory of Potentially Vacant Land



Community and School Gardens\*



# Conservation Values

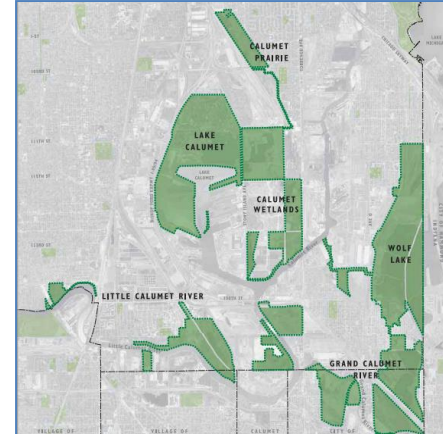
Identify biodiversity and land management conservation opportunities



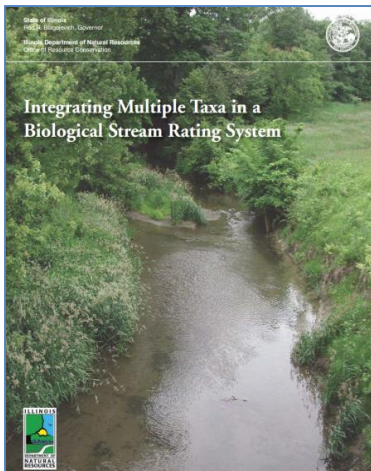
Important Bird Area;  
State Listed Species



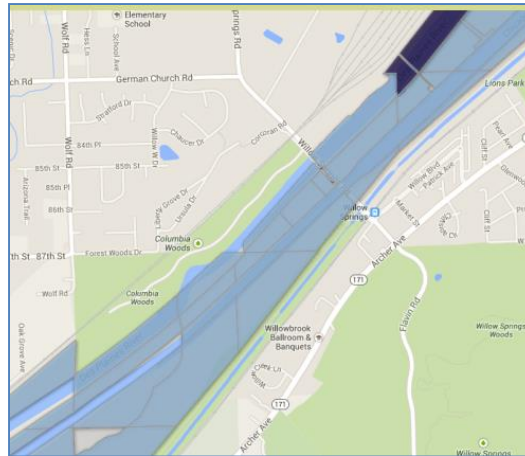
National Wetlands Inventory



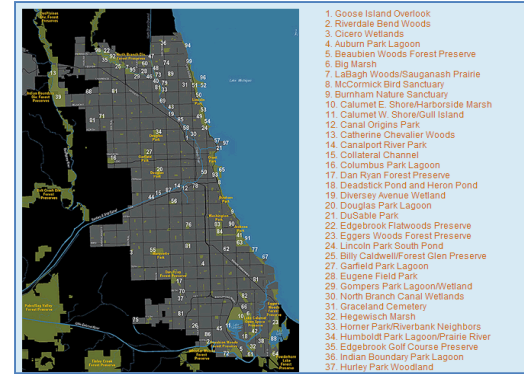
Calumet Open Space  
Reserve Management Units



Biologically Significant  
Streams

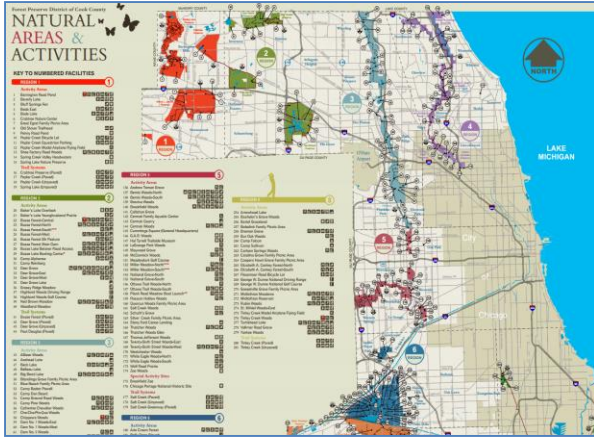


Forest Preserves of Cook County



Chicago Nature Areas Directory

# Recreational Use Values



Forest Preserves Areas and Activities



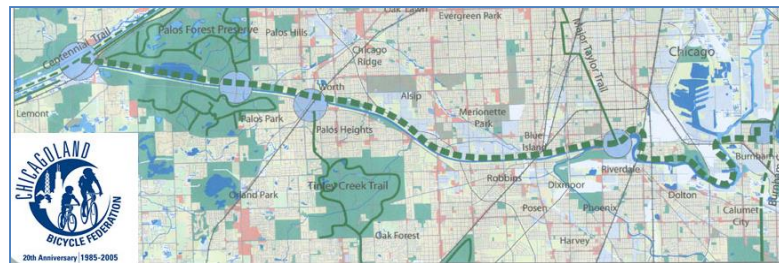
Water Trails & Boat Access



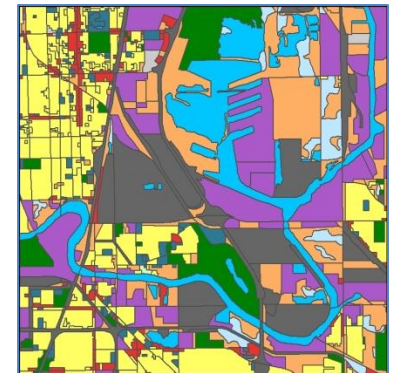
Public Schools: Community Park Space



Wildlife Viewing

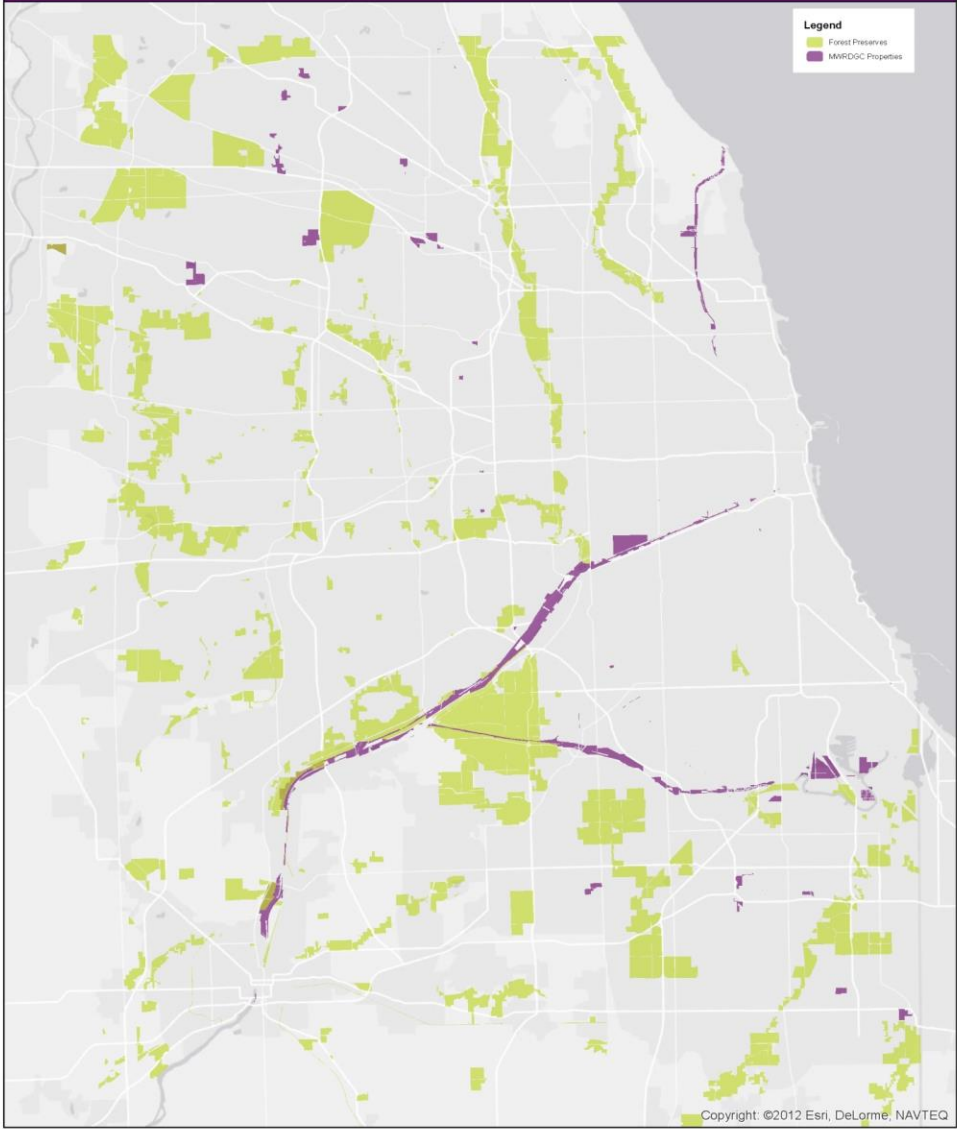


Existing and Proposed Bicycle Trails

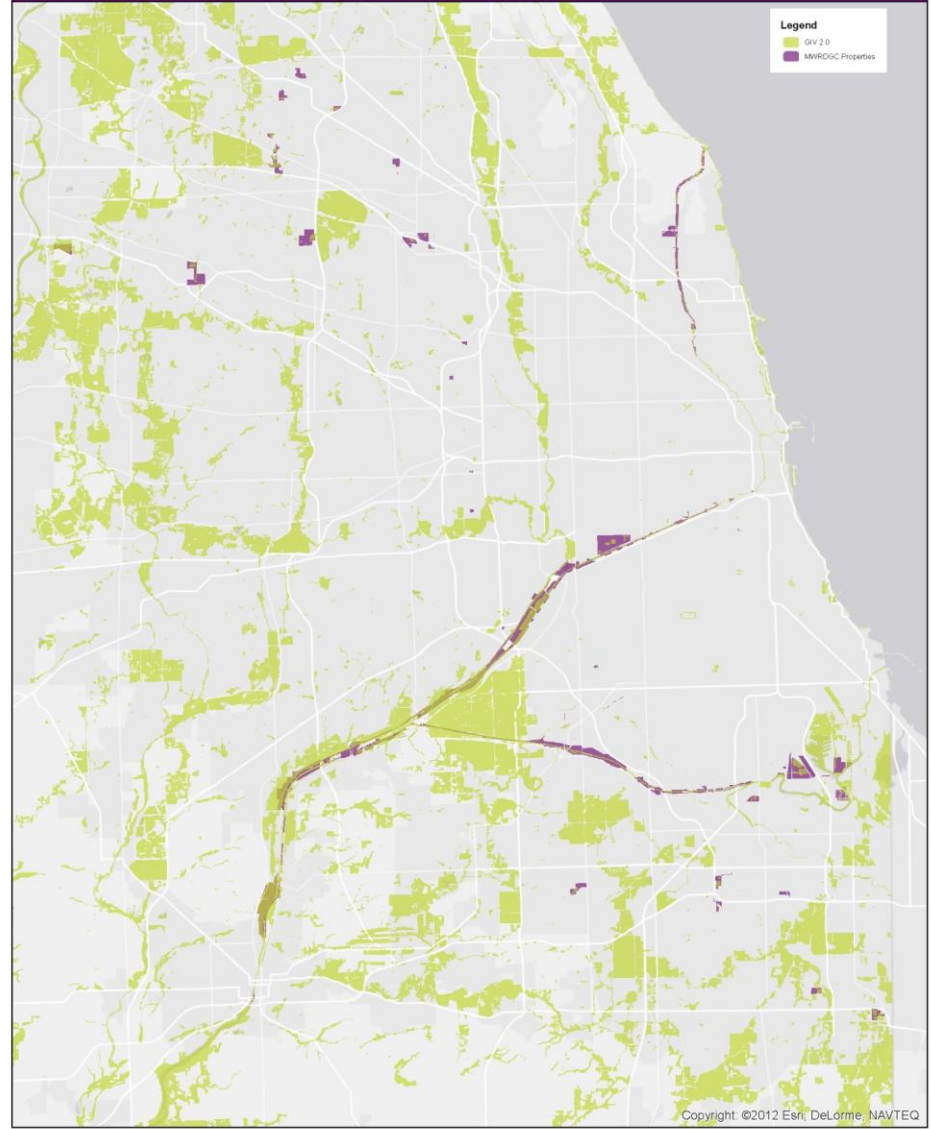


CMAP Land Use Inventory

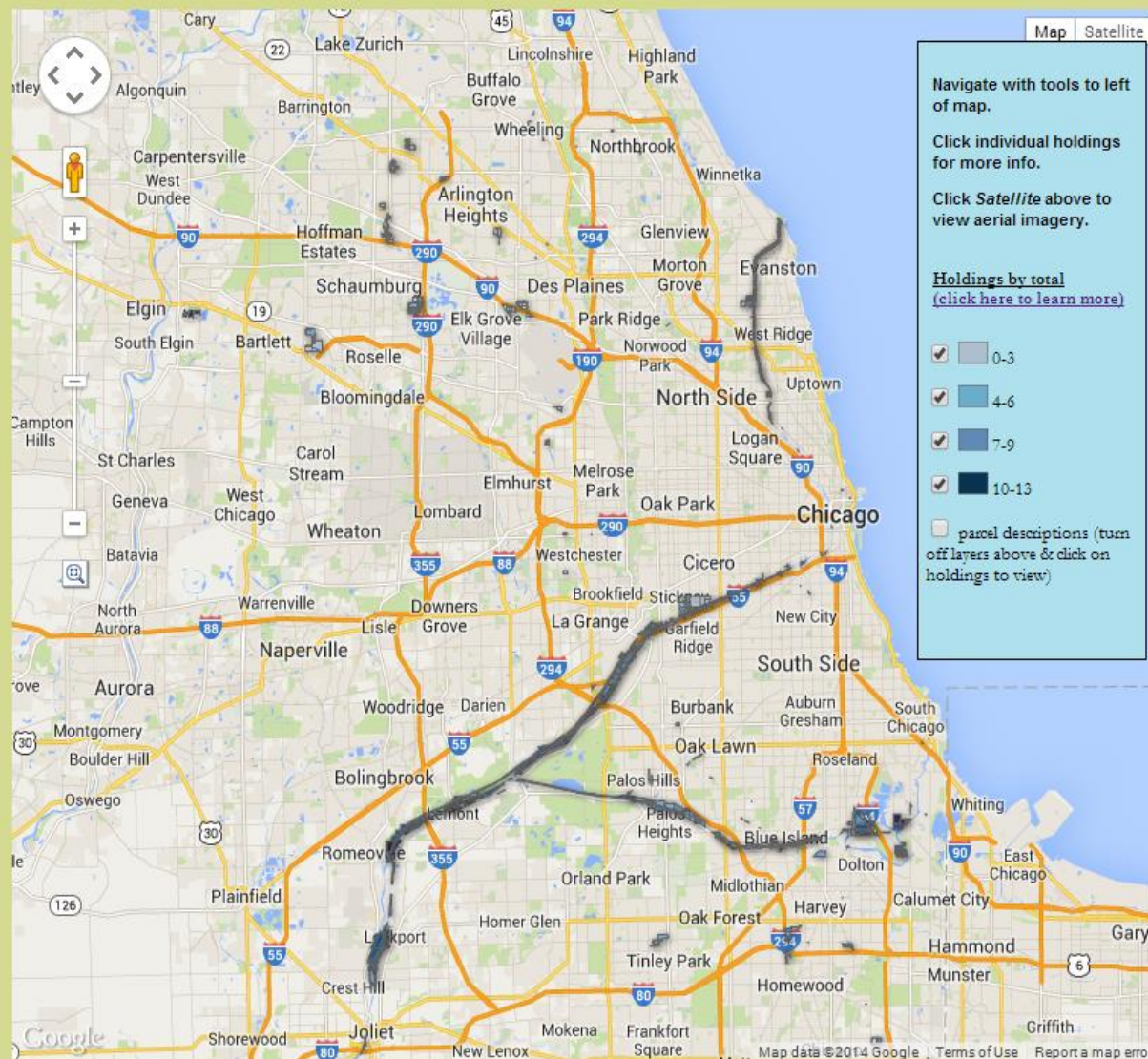
# Forest Preserves



# Green Infrastructure Vision 2.0 (Chicago Wilderness)

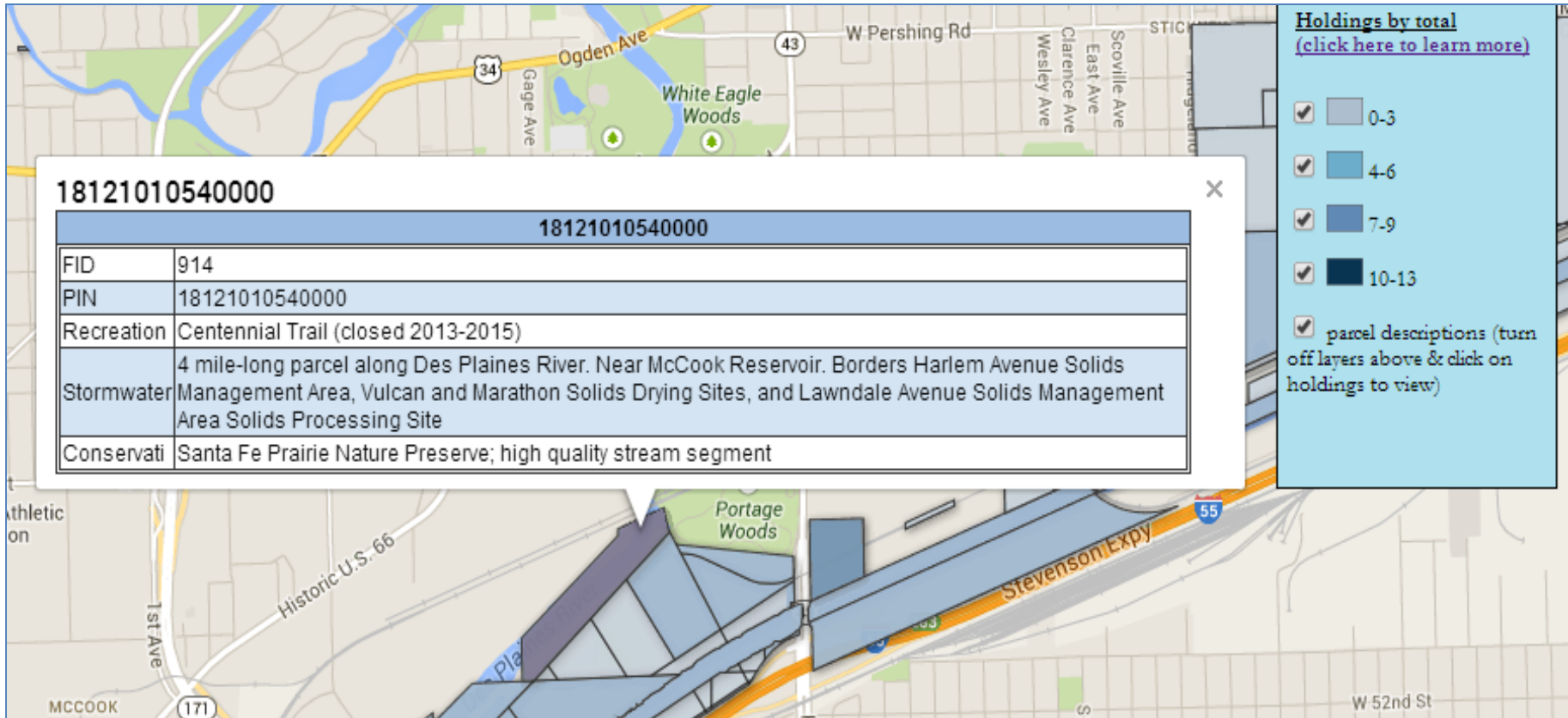


## MWRDGC Holdings Analyzed for Potential Stormwater, Conservation, & Recreation Value



Disclaimer: The data displayed on this map may vary in age and spatial accuracy.





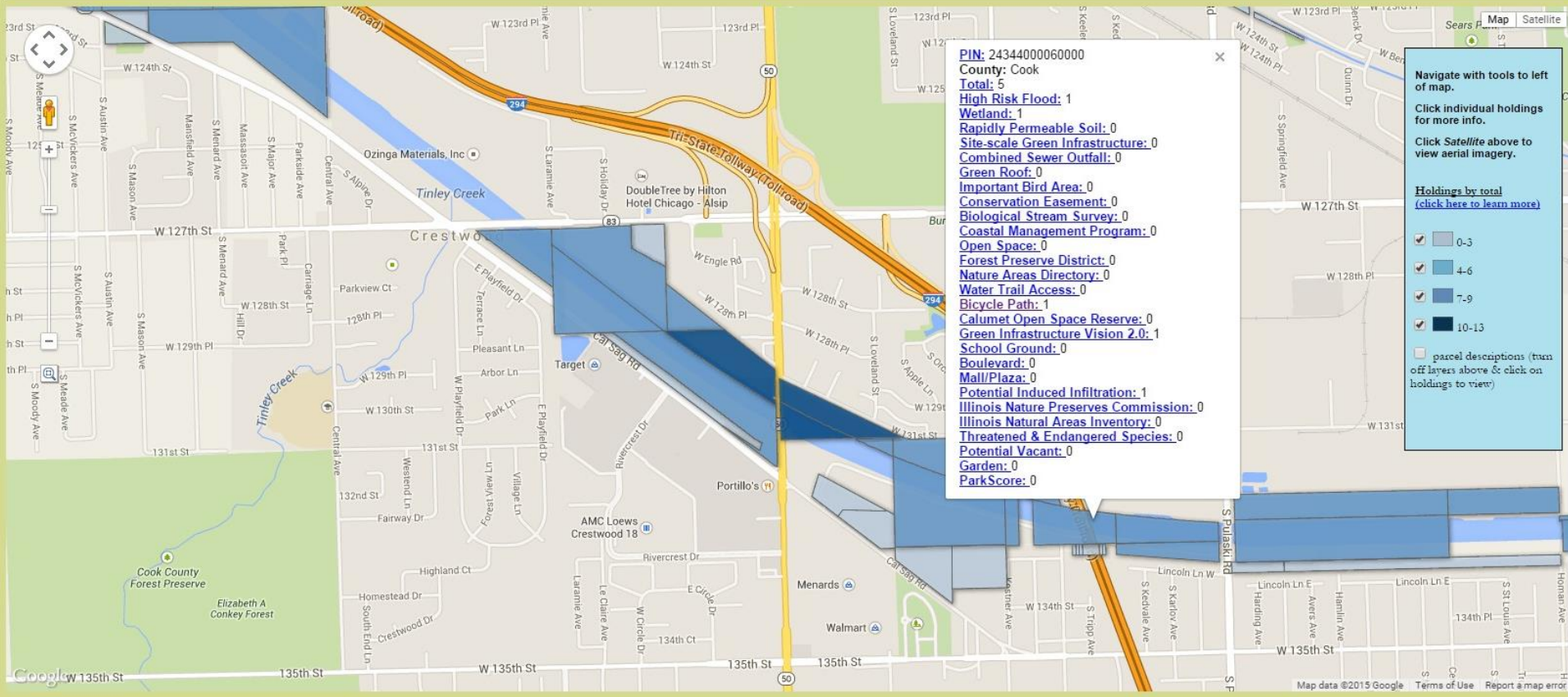
**Holdings by total**  
[\(click here to learn more\)](#)

- 0-3
- 4-6
- 7-9
- 10-13
- parcel descriptions (turn off layers above & click on holdings to view)

**18121010540000**

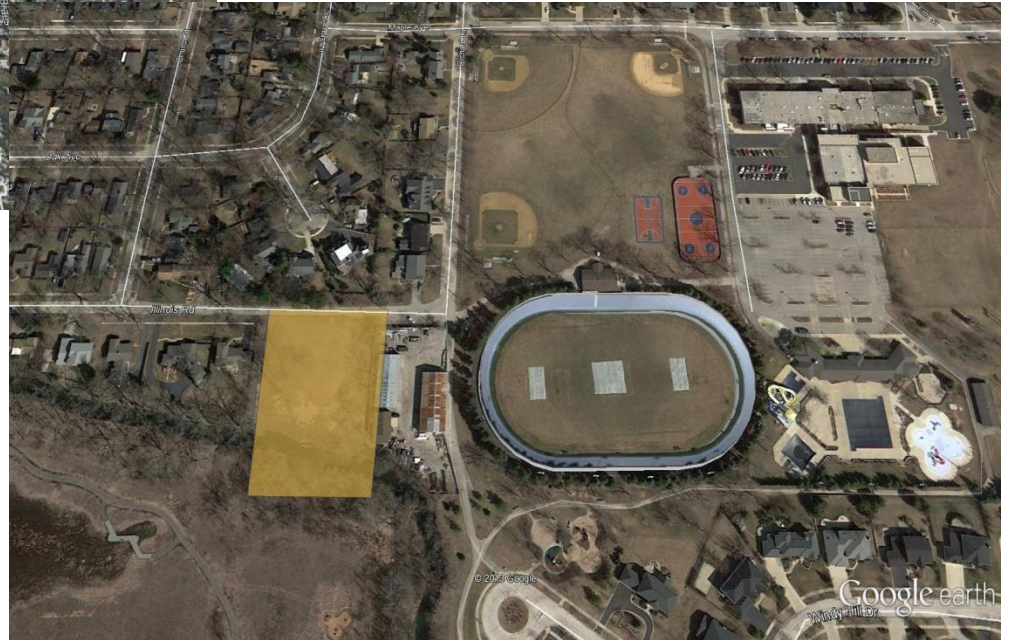
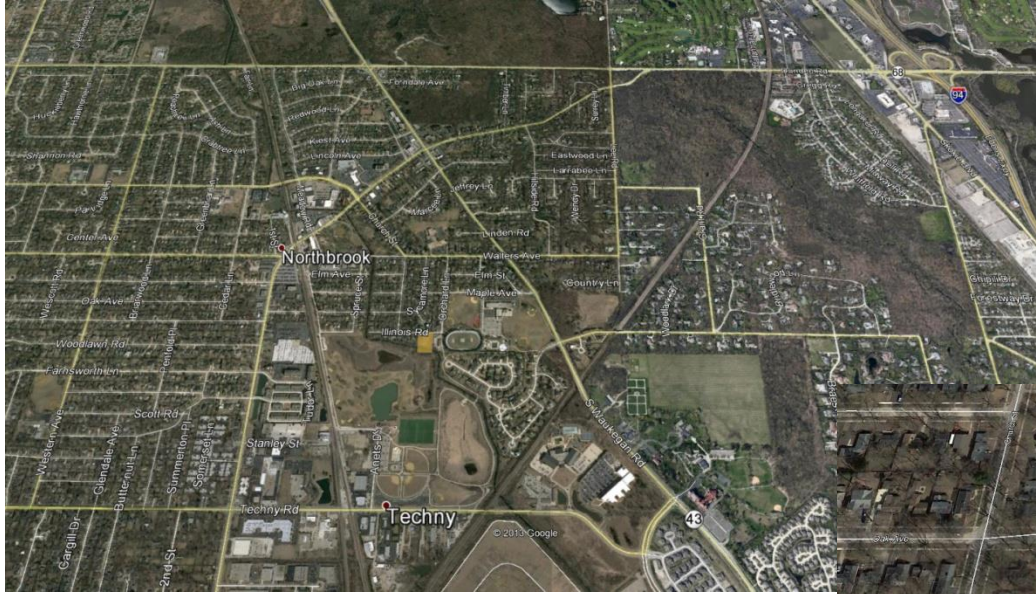
18121010540000	
FID	914
PIN	18121010540000
Recreation	Centennial Trail (closed 2013-2015)
Stormwater	4 mile-long parcel along Des Plaines River. Near McCook Reservoir. Borders Harlem Avenue Solids Management Area, Vulcan and Marathon Solids Drying Sites, and Lawndale Avenue Solids Management Area Solids Processing Site
Conservati	Santa Fe Prairie Nature Preserve; high quality stream segment

**MWRDGC Holdings Analyzed for Potential Stormwater, Conservation, & Recreation Value**



Disclaimer: The data displayed on this map may vary in age and spatial accuracy.

# Northbrook Parcel







# Opportunities

