



Creating Communities of Opportunity

GRIP the Future: Launching the Gary and Region Investment Project

Radhika Fox
Federal Policy Director
PolicyLink

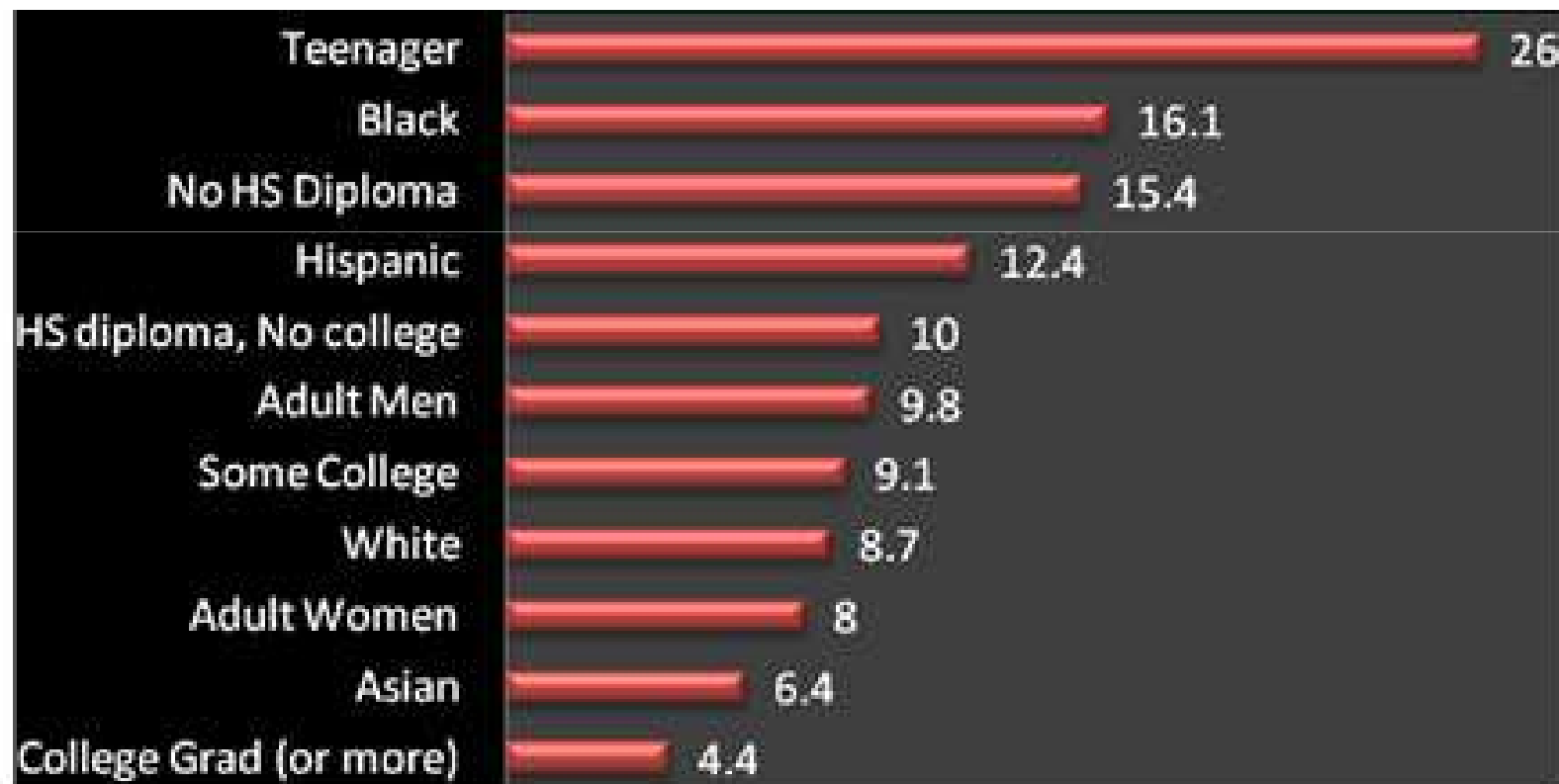
October 27, 2010

PolicyLink is a national research and action institute advancing economic and social equity by *Lifting Up What Works*[®].

- Rising inequality
- Shifting demographics
- Globalization
- Ecological Crisis

Uneven Economic Recession

9.6% Unemployment Rate-September 2010

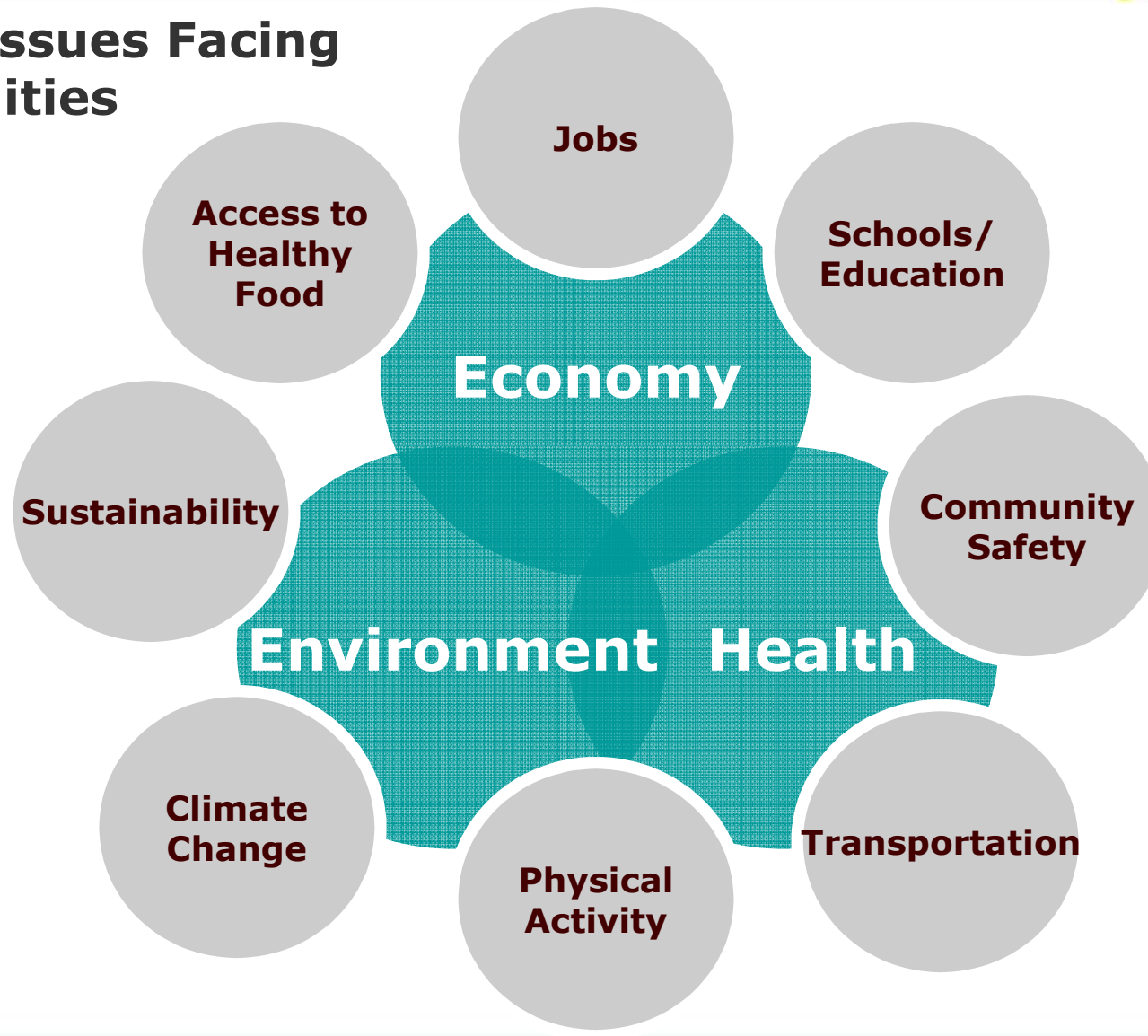


Inclusion Inseparable from Regional Competitiveness

- Rising incomes in cities increase income, population, and home prices in suburbs
- Reducing poverty in core communities improves overall regional economic growth
- Reducing fiscal disparities between cities and suburbs can lead to mutual benefit

Creating Communities of Opportunity

Critical Issues Facing Communities



Moving From Poverty to Opportunity

Low- Income Communities

- Low commercial activity
- Few services
- Unsafe/Limited parks
- Poor performing schools
- Increased pollution and toxic waste sites
- Limited public transportation
- Lack of jobs
- High unemployment

Concentrated Poverty

Healthy Communities

Communities of Opportunity

- Strong commercial activity
- Access to services
- Parks and safe public spaces
- High-performing schools
- Non-predatory financial institutions
- Good public transportation
- Employment and entrepreneurship

- **People:** ensuring benefits for vulnerable communities
- **Places:** spatial distribution of dollars
- **Projects:** that support equitable outcomes
- **Process:** who decides

Lifting Up What Works®: Market Creek Plaza

- Focus on signature, transformative project
- Leveraging public and private dollars
- Multiple engagement mechanisms
- Encourage resident decision-making
- Partner to build capacity and civic engagement
- Anticipating and dealing with matters of race



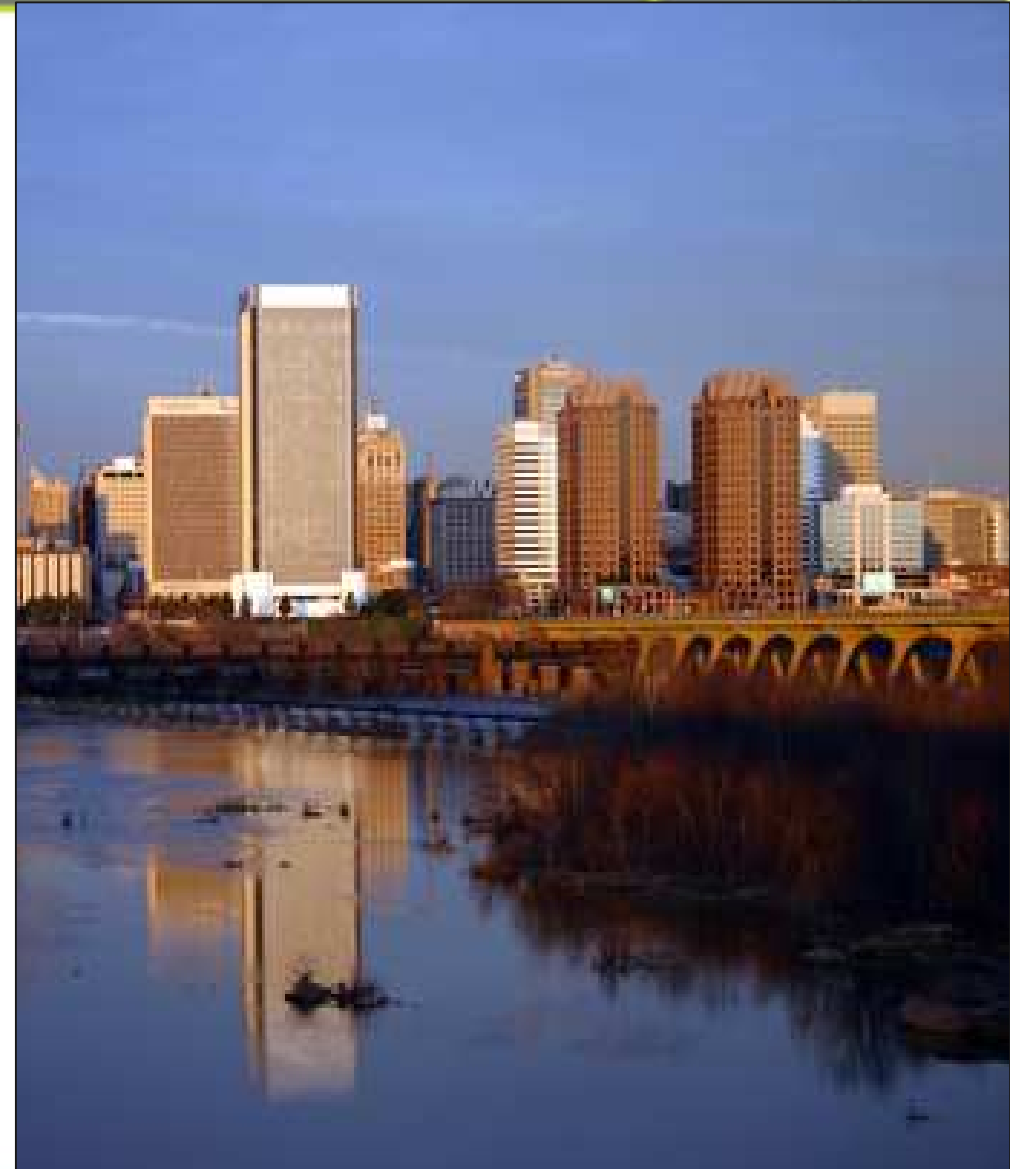
Lifting Up What Works®: Green Impact Zone (Kansas City)

- Leveraged ARRA funding to launch neighborhood transformation strategy
- Targeted to distressed urban core
- Focus on reconnecting neighborhood to the regional economy
- Linking economic development and workforce strategies



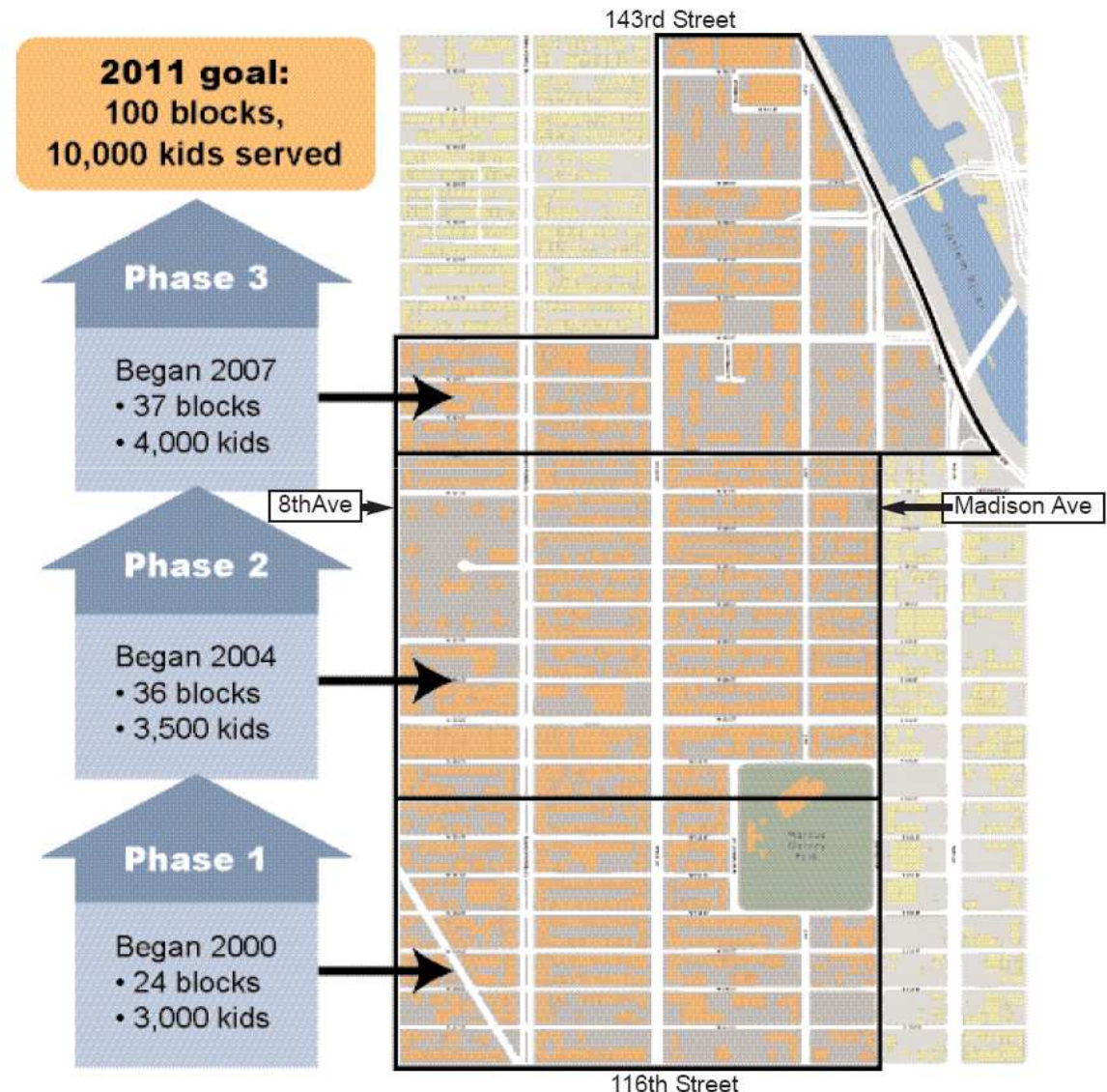
Lifting Up What Works®: Neighborhoods in Bloom

- Early civic engagement facilitated by existing structures
- Critical mass of public resources
- Committed developers, city staff, and residents



Lifting Up What Works®: Harlem Children's Zone

- Shared vision
- Create a pipeline of support
- Build community among residents, institutions, and stakeholders
- Continuous learning and improvement
- Cultivate a culture of success



- Build a belief system - pursue economic competitiveness and social inclusion in tandem
- Start from existing assets
- Create new systems, not just new programs
- Prioritize long-term improvement over short-term fixes
- Take a regional view
- Build capacity of innovative, catalytic organizations and leaders
- Work smarter with resources at hand while also creating new ones.
- Make decision-making transparent, accountable, and accessible.



Contact Information

Radhika Fox: radhika@policylink.org

510-663-2333

www.policylink.org