



South Suburban Atlas
Regional Mapping Intermediary

SouthSuburbanAtlas
South Suburban Mayors and Managers
Association

History

- ▶ Received a \$2.4 million HUD Sustainable Communities Challenge Grant – Green TIME Zone
- ▶ GIS is cornerstone of our work but limited in current capacity
- ▶ Decided to create a GIS web mapping application to provide better services to the region
- ▶ Cook County and Will County are working in conjunction with SSMMA to provide the most accurate, up to date information
- ▶ **Cost benefit based on economy of scale**



Intro to GIS

- ▶ Geographic Information Systems
 - ▶ Hardware, software, and data for capturing, managing, analyzing, and displaying all forms of **geographically referenced information**.
 - ▶ Municipalities all over the **world** use GIS **everyday**
 - ▶ Our system allow you to show relevant information to the **public** while being able to edit and maintain sensitive information on a **private portal**
 - ▶ Goal is to provide GIS at an **affordable price**
 - ▶ Unprecedented collaboration between **Cook County, Will County, CMAP, Forest Preserve Districts, and MWRD**
 - ▶ Part of larger **Open Data** initiative spearheaded by Cook County
-



Keys to Our System

- ▶ Held in Cook County Environment
 - ▶ This means that **no** special hardware is needed.
 - ▶ Just download free Microsoft Silverlight
 - ▶ City of Chicago and CTA moving their GIS functionality to county cloud environment.
 - ▶ Composed of **Cook** and **Will** County Data
 - ▶ Easy to use **editing** capabilities through you web browser



South Suburban Atlas Website

Website: www.ssatlas.org

South Suburban Atlas
GIS Consortium

Home About Us FAQ Join Us Members Partners Products Projects Reports Resources Sponsor Contact Us

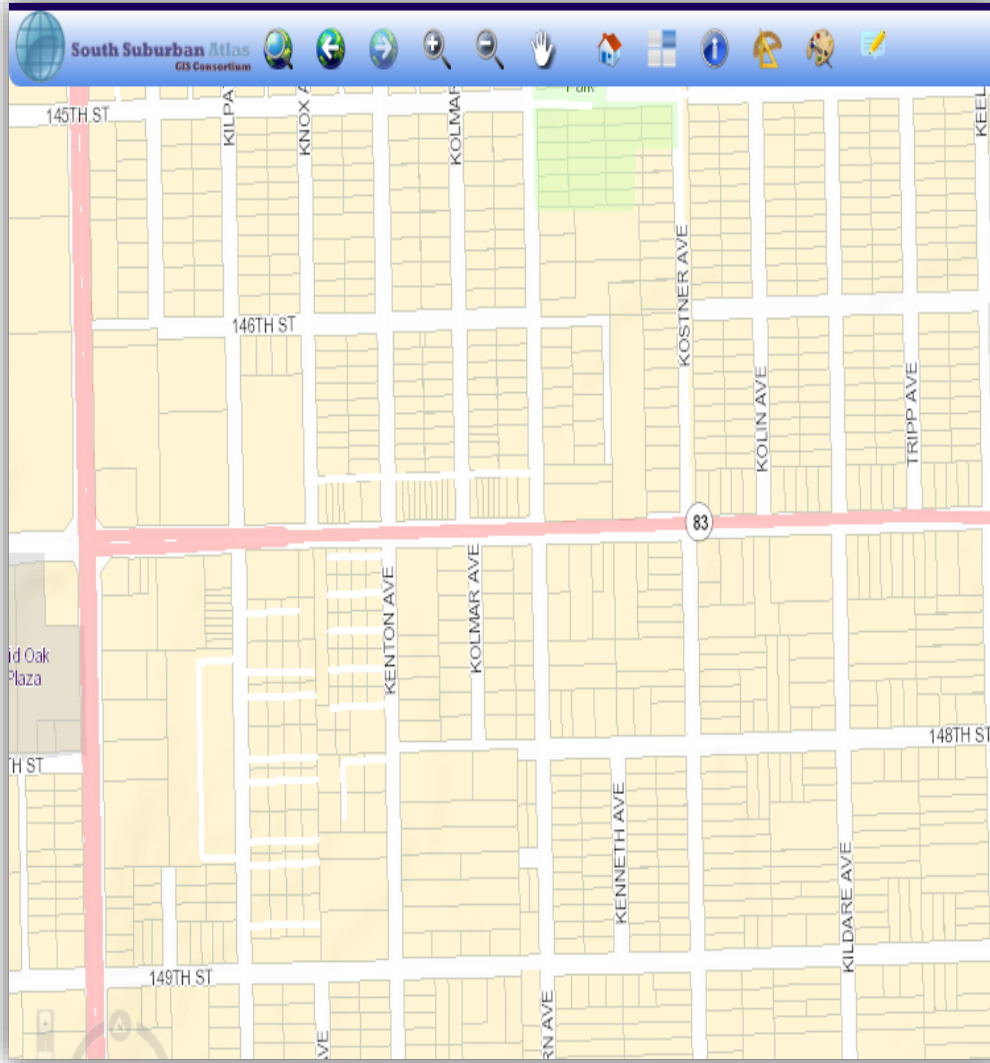
3D Aerial View: Downtown Chicago, OH Distribution Center, OH Chicago Intermodal Terminal, Chicago Logistics Park, Future Customer Site.

2D Map Labels: Hazel Crest, James O Setnes Park, Calumet Country Club, Advocate South Suburban Hospital, Stone Hollow Park, Ravislee Country Club, Homewood, Homewood Estates, Dolphin Park, Lake Park, Flossmoor, Wull Park, Coyote Run Golf Course, Odyssey Country Club, Woodgate Park, Allamong, Matteson, St. James Hospital, Olympia Fields, Olympia Fields Country Club, Highland Park, Flossmoor Country Club, Serena Play Area, Prairie State College, Chicago Heights Golf Course East, Assumption Cemetery, Sweet Woods Forest Preserve, Jurgens Woods For Preserve, Hickory Glen Pa.

Spatial Analysis

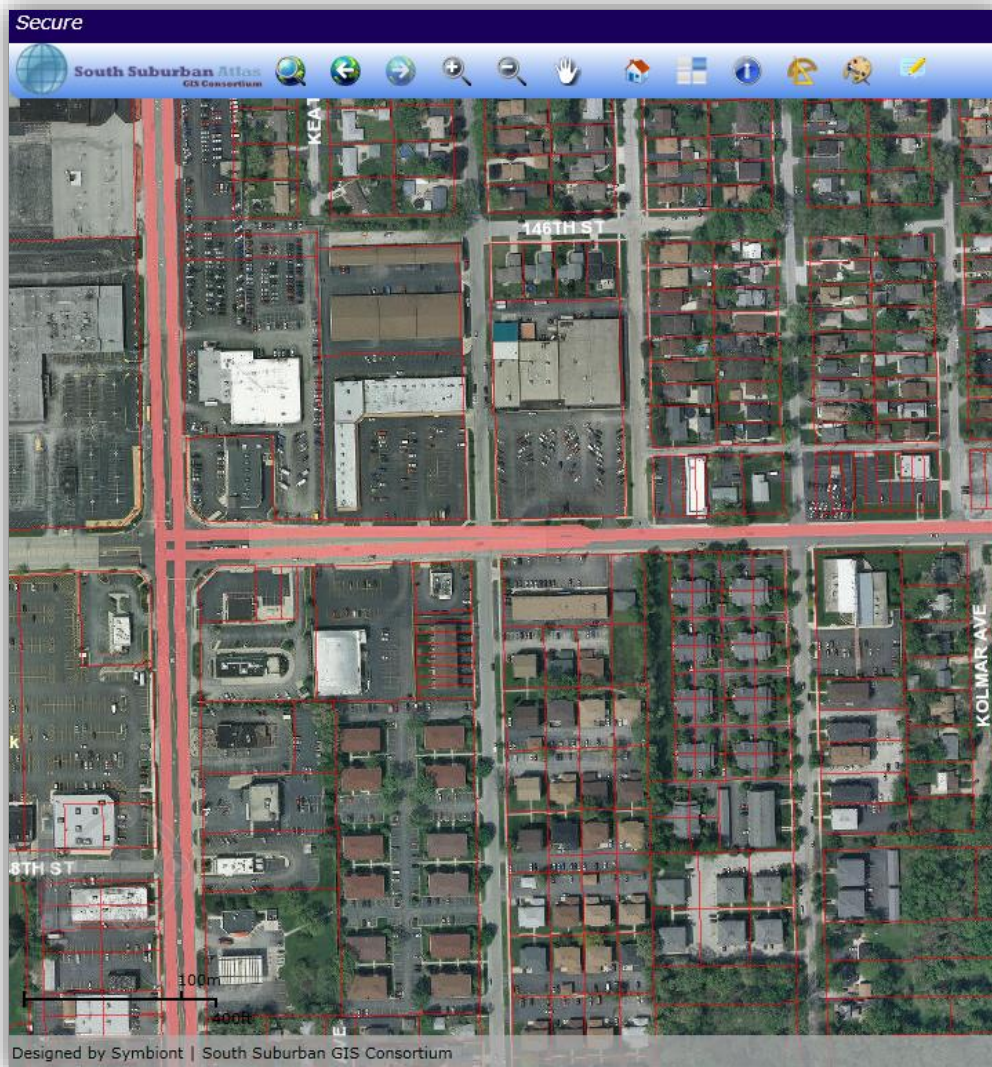
Blog Green TIME Zone The Atlas

Basemaps



- ▶ **Streets**
- ▶ Hybrid(Parcels+Aerials)
- ▶ Aerials
- ▶ Topographic
- ▶ US Geological Service

Basemaps



- ▶ Streets
- ▶ **Hybrid(Parcels+Aerials)**
- ▶ Aerials
- ▶ Topographic
- ▶ US Geological Service

Administrative Dataset

South Suburban Atlas CSEDC | SSMMA

SSMMA Base Maps | Bookmarks | Layers | Print

Identify

(19) Parcels

PIN14	28104000150000
City	MIDLOTHIAN
Address Combined	04322 148TH ST
Taxpayer Address	4322 W 148TH ST
Zip4	604453202
Taxpayer City and State	MIDLOTHIAN IL
Land Average	3775
Taxpayer ZIP	60445
Improvement Value	\$14,693.00
Age	26
Total Value	\$18,468.00
Bedrooms	3
Rooms	5

Layers

- Basemap
- Parcels
- Administrative
- Economic Development
- Emergency Response
- Engineering
- Housing
- Infrastructure
- Natural Resources
- Planning
- Political
- TOD
- Transportation
- Statistical
- Analysis

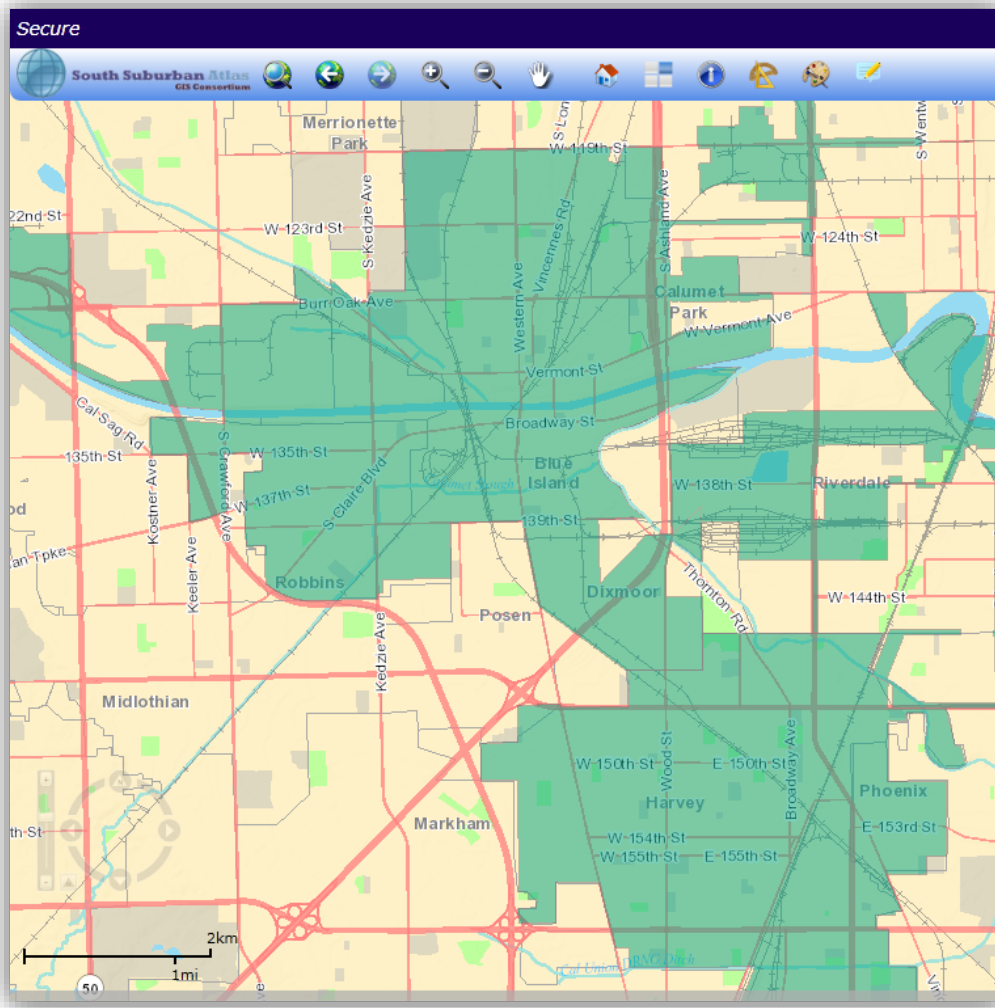
30m
100ft
148TH ST

Designed by Symbiont | South Suburban GIS Consortium

Include: County, Township, Parcel Pin, Community, Address, Assessor's Data, Fire Zone, Police Zone, Snow Removal, Water Distribution, Recycling, Garbage, School Districts, Congressional District, House District, Precinct, Zoning.

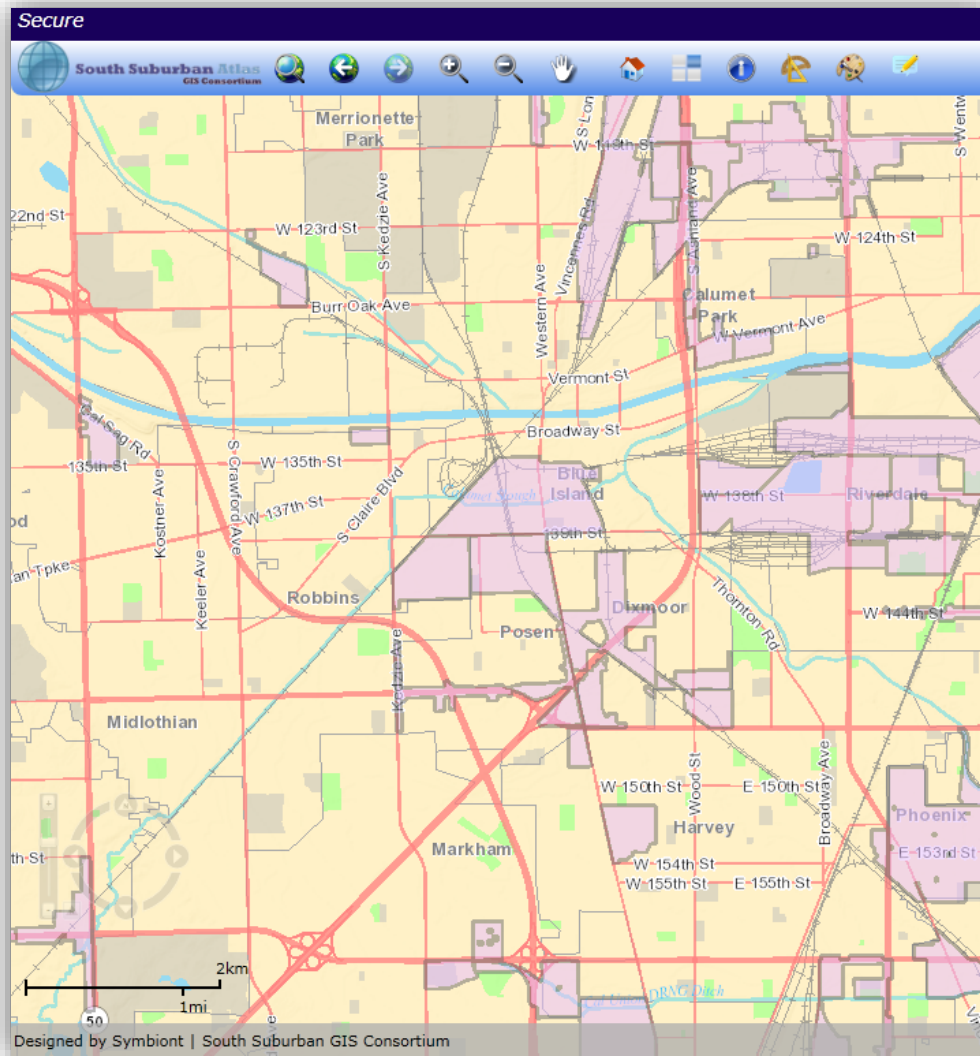


Economic Development Dataset



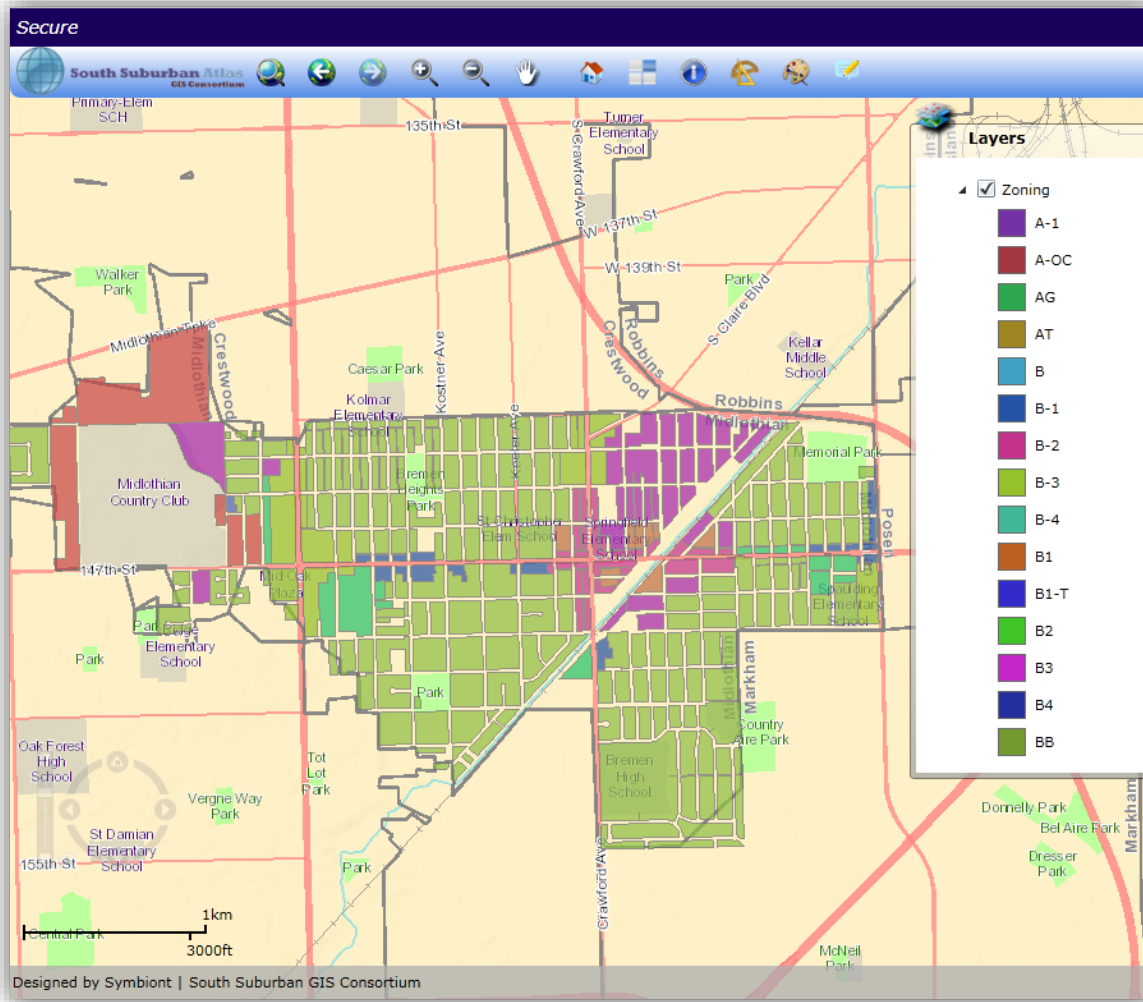
- ▶ Available Buildings and Land
- ▶ Brownfields
- ▶ **Enterprise Zones**
- ▶ TIF Districts
- ▶ Cook Businesses
- ▶ Employment Centers
- ▶ New Market Tax Credits
- ▶ Site Remediation Program
- ▶ Water Capacity/Demand

Economic Development Dataset



- ▶ Available Buildings and Land
- ▶ Brownfields
- ▶ Enterprise Zones
- ▶ **TIF Districts**
- ▶ Cook Businesses
- ▶ Employment Centers
- ▶ New Market Tax Credits
- ▶ Site Remediation Program
- ▶ Water Capacity/Demand

Planning Dataset



▶ Zoning

▶ Building Footprints

▶ Bike Trails

▶ CMAP Land Use

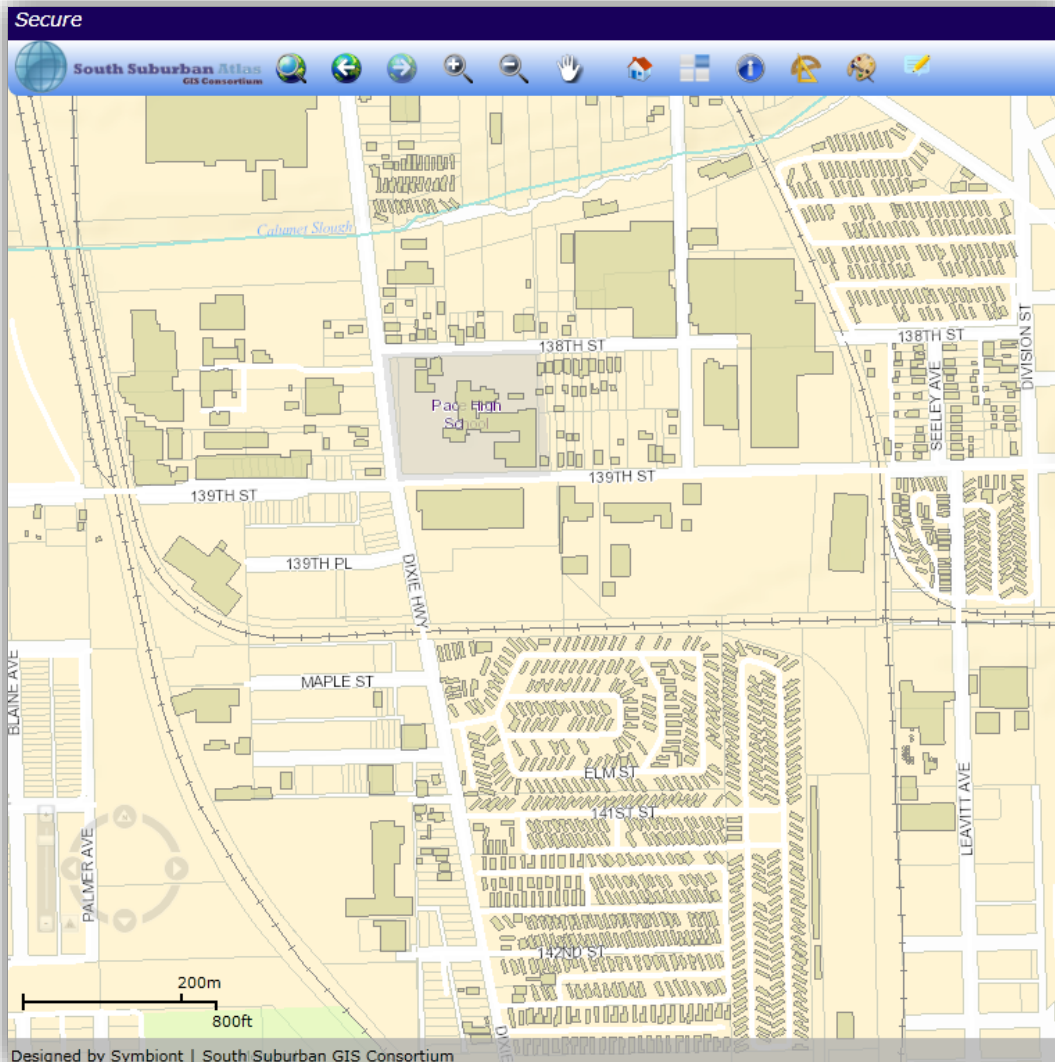
▶ Community Services

▶ Forest Preserves

▶ Subdivisions(County)

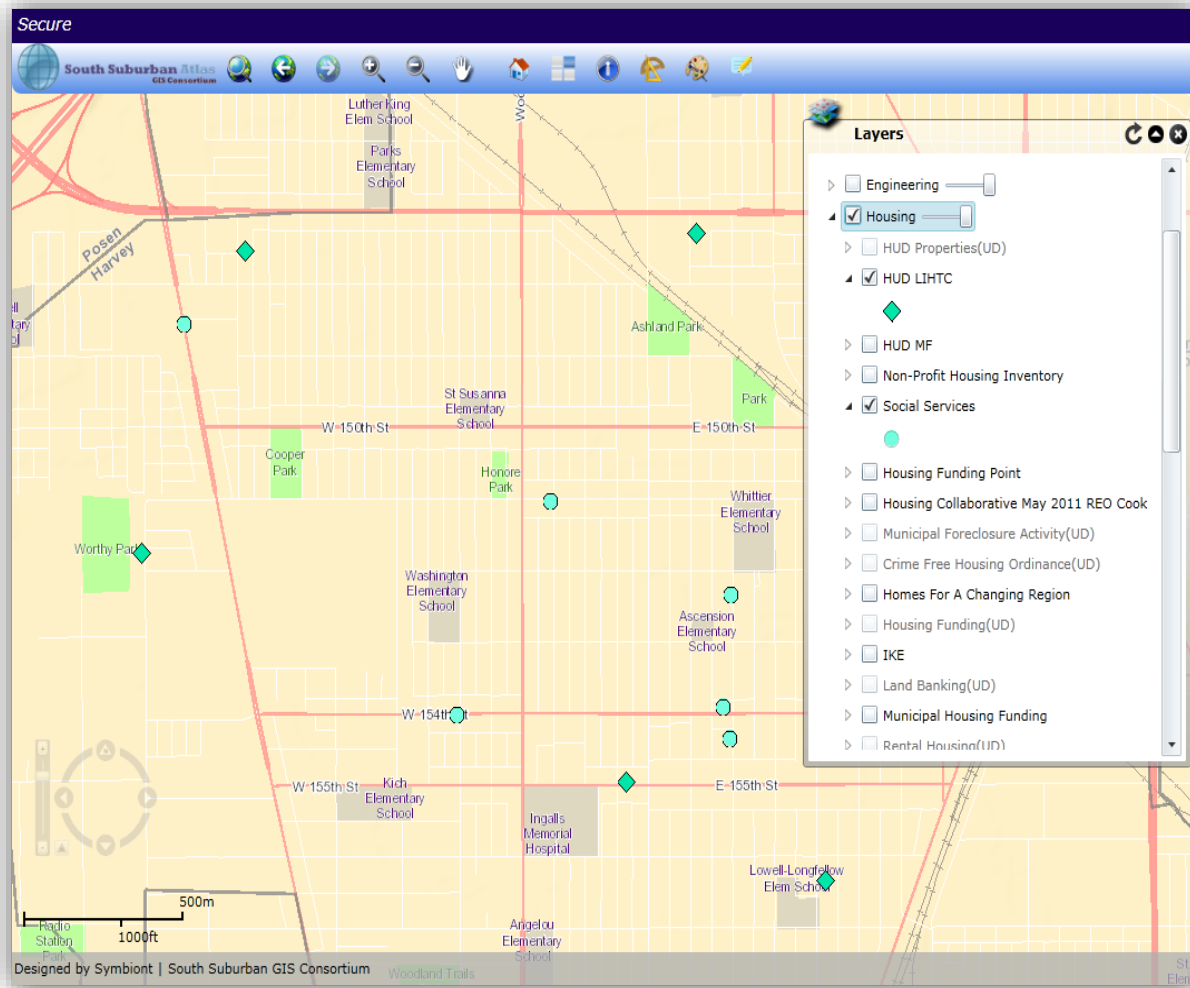
▶ Subdivisions (City)

Planning Dataset



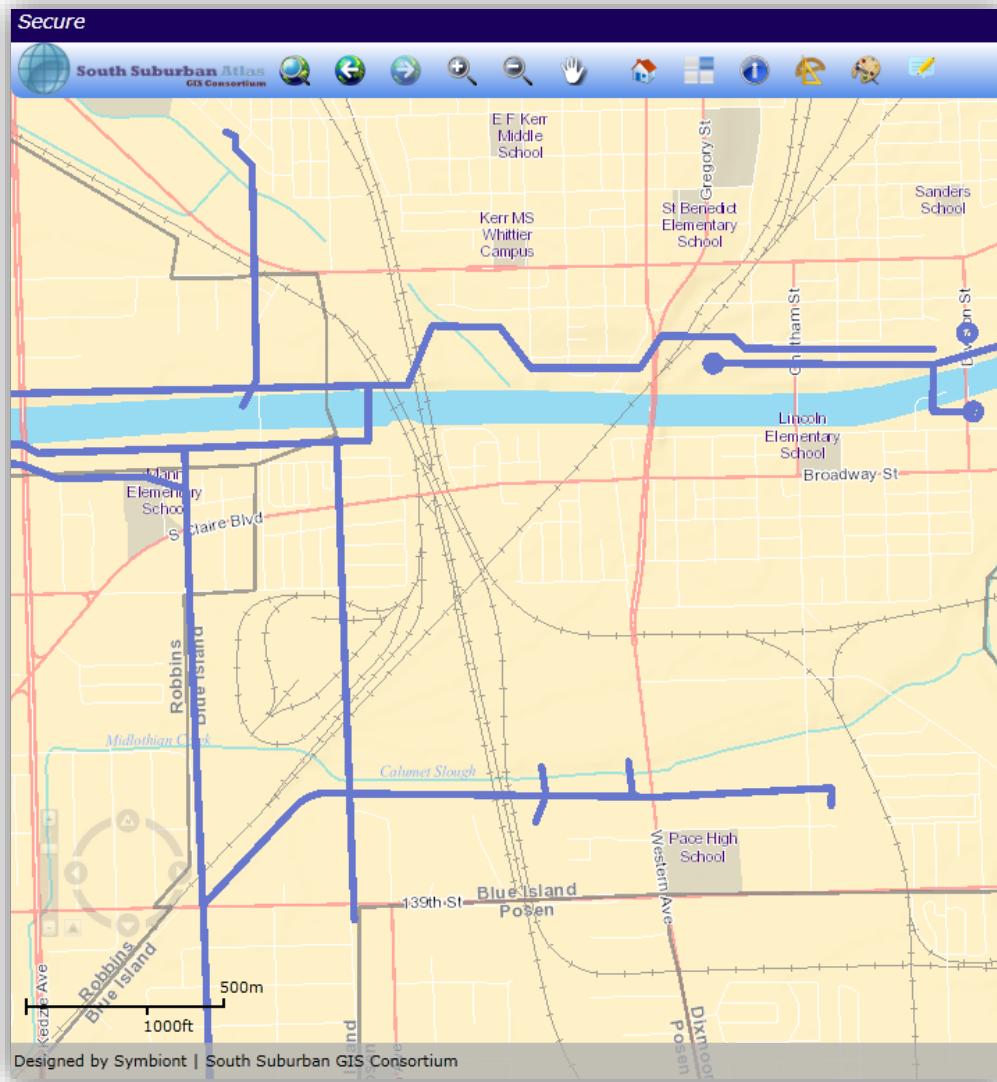
- ▶ Zoning
- ▶ **Building Footprints**
- ▶ Bike Trails
- ▶ CMAP Land Use
- ▶ Community Services
- ▶ Forest Preserves
- ▶ Subdivisions(County)
- ▶ Subdivisions (City)

Housing Dataset



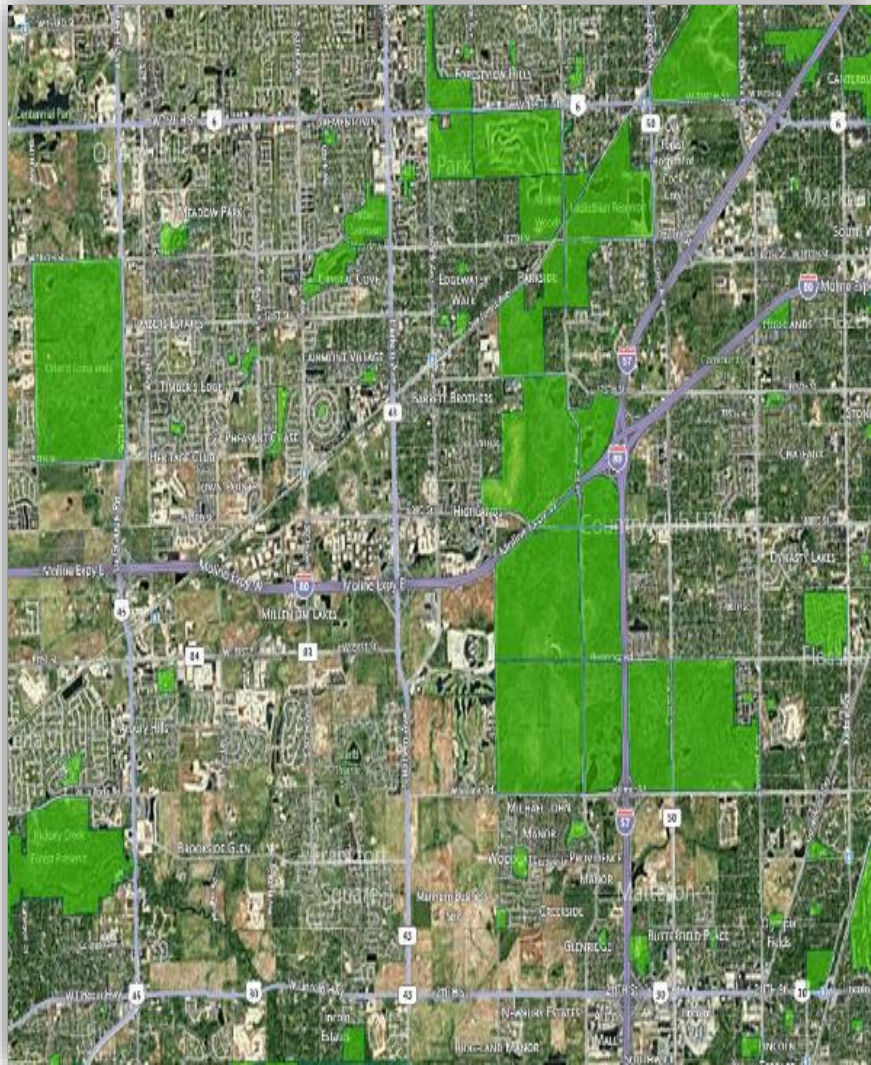
- ▶ Foreclosure Activity(RIS)
- ▶ Non-Profit Housing Funding
- ▶ **HUD_LIHTC**
- ▶ HUD_Multi-Family Properties
- ▶ **Social Services**

Infrastructure Dataset



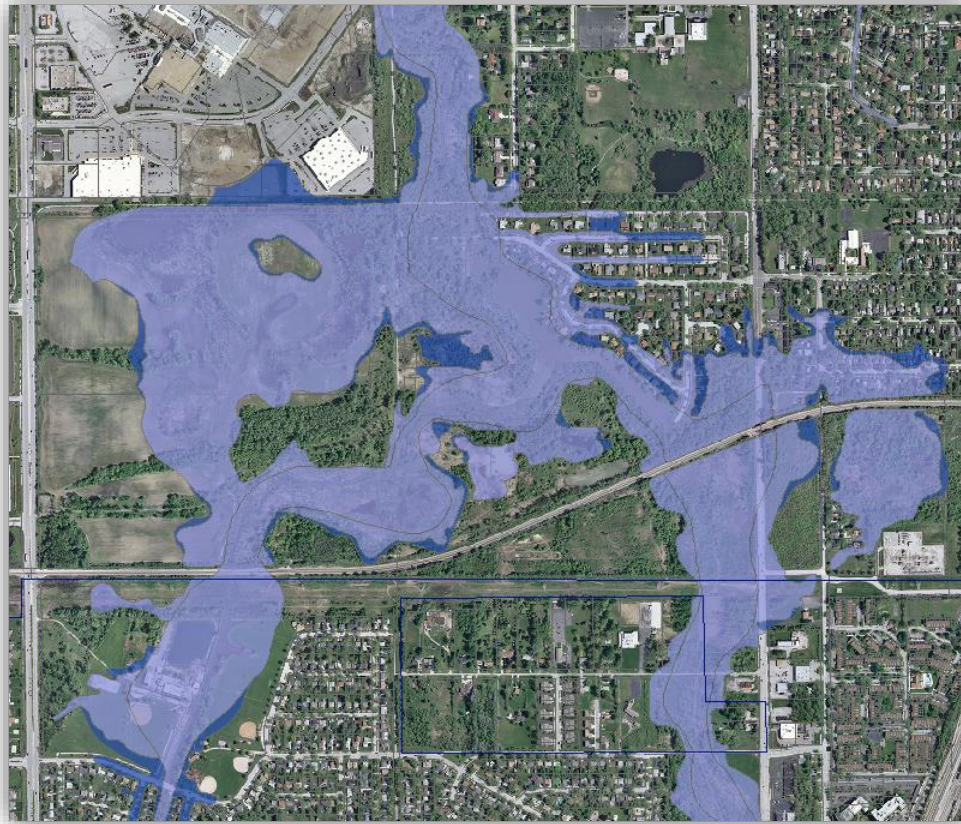
- ▶ Storm Mains
- ▶ Sanitary Mains
- ▶ **MWRD Infrastructure**
- ▶ Thorn Creek S.D. Infrastructure
- ▶ Edge of Pavement
- ▶ Sidewalks
- ▶ State Bridge Inventory
- ▶ Hazardous Materials Pipelines
- ▶ Cell Phone Towers

Natural Resources Dataset



- ▶ **Natural Areas**
- ▶ Floodway
- ▶ Floodplain
- ▶ Watersheds
- ▶ Soils
- ▶ Wildlife Sighting
- ▶ Parks
- ▶ Wetlands
- ▶ Trees

Natural Resources Dataset



- ▶ Natural Areas
- ▶ Floodway
- ▶ **Floodplain**
- ▶ Watersheds
- ▶ Soils
- ▶ Wildlife Sighting
- ▶ Parks
- ▶ Wetlands
- ▶ Trees

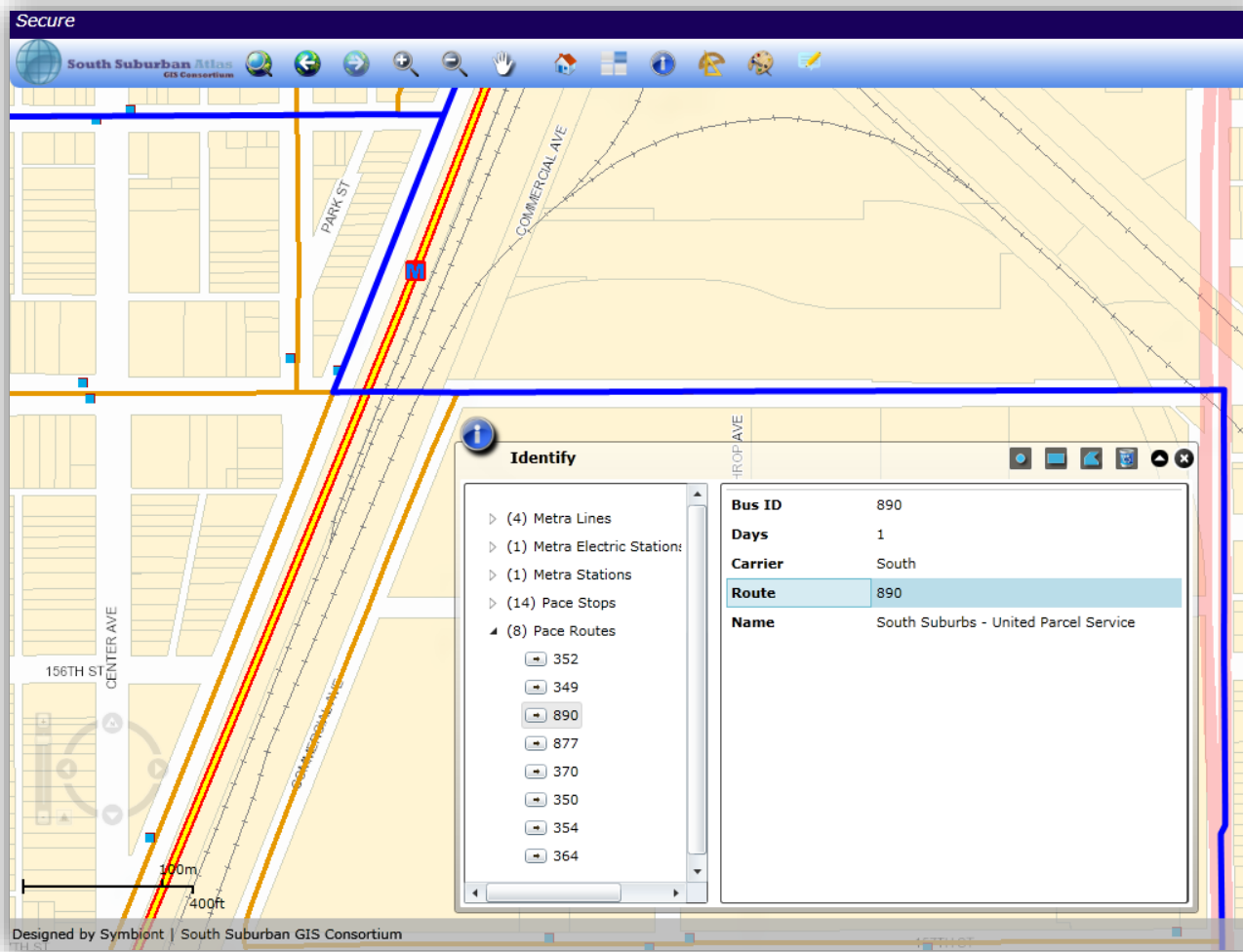


TOD Dataset



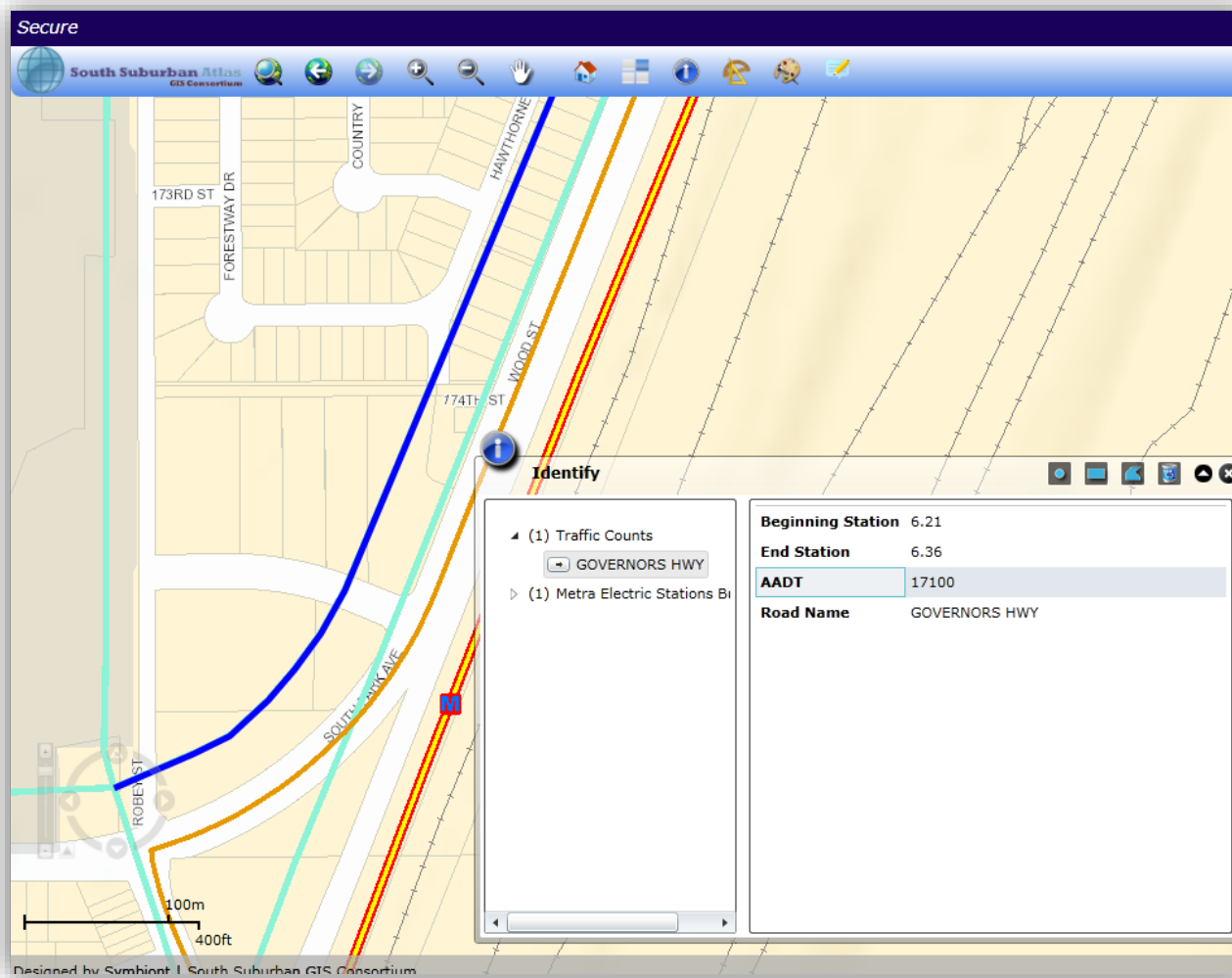
- ▶ **TOD Zoning**
- ▶ TOD Available Sites
- ▶ TOD Land Use
- ▶ Walk/Drive Service Times
- ▶ Transit Data

Transportation Dataset



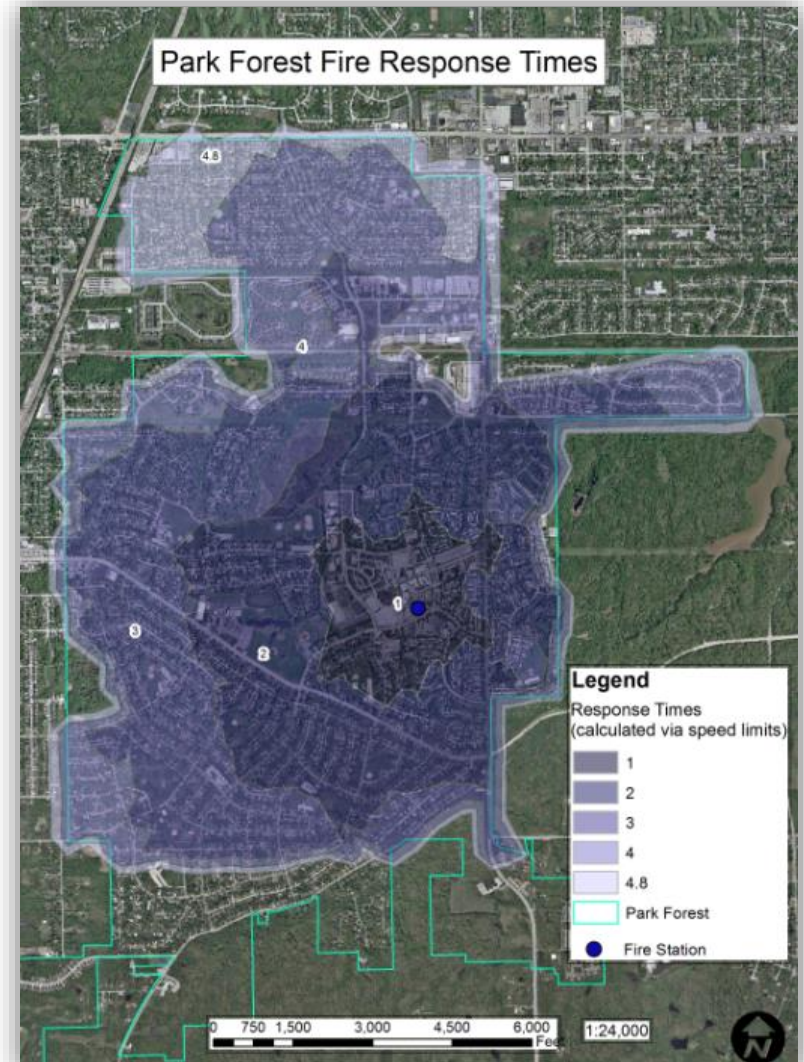
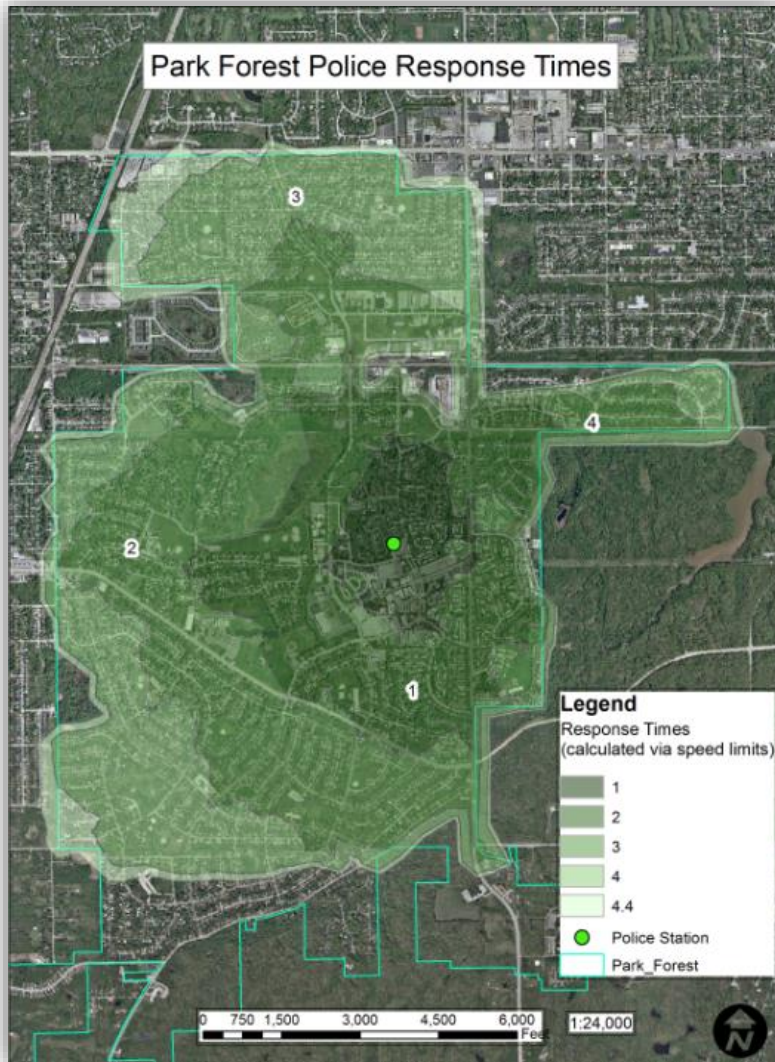
- ▶ **Metra Lines**
- ▶ **Metra Stations**
- ▶ **Pace Routes**
- ▶ **Pace Stops**
- ▶ **Complete Streets**
- ▶ **Truck Routes**
- ▶ **Traffic Counts**

Transportation Dataset

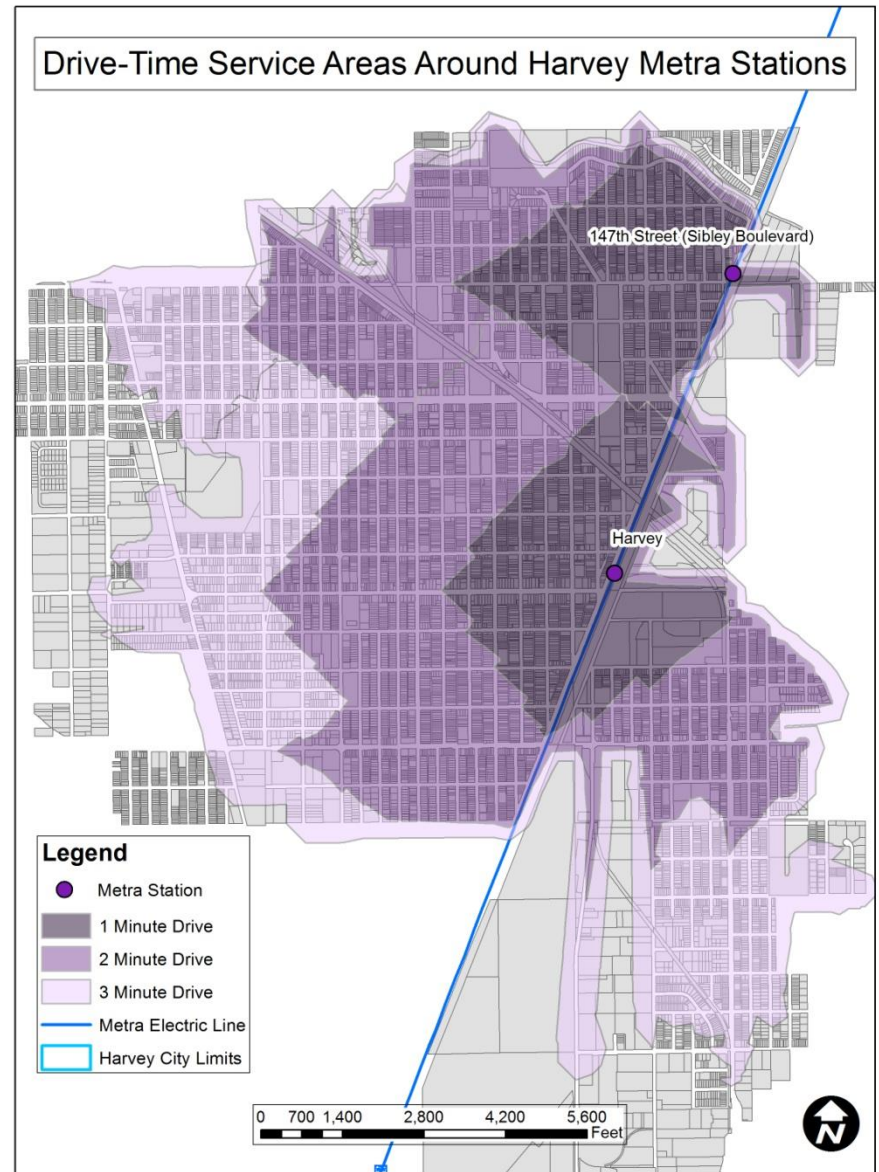
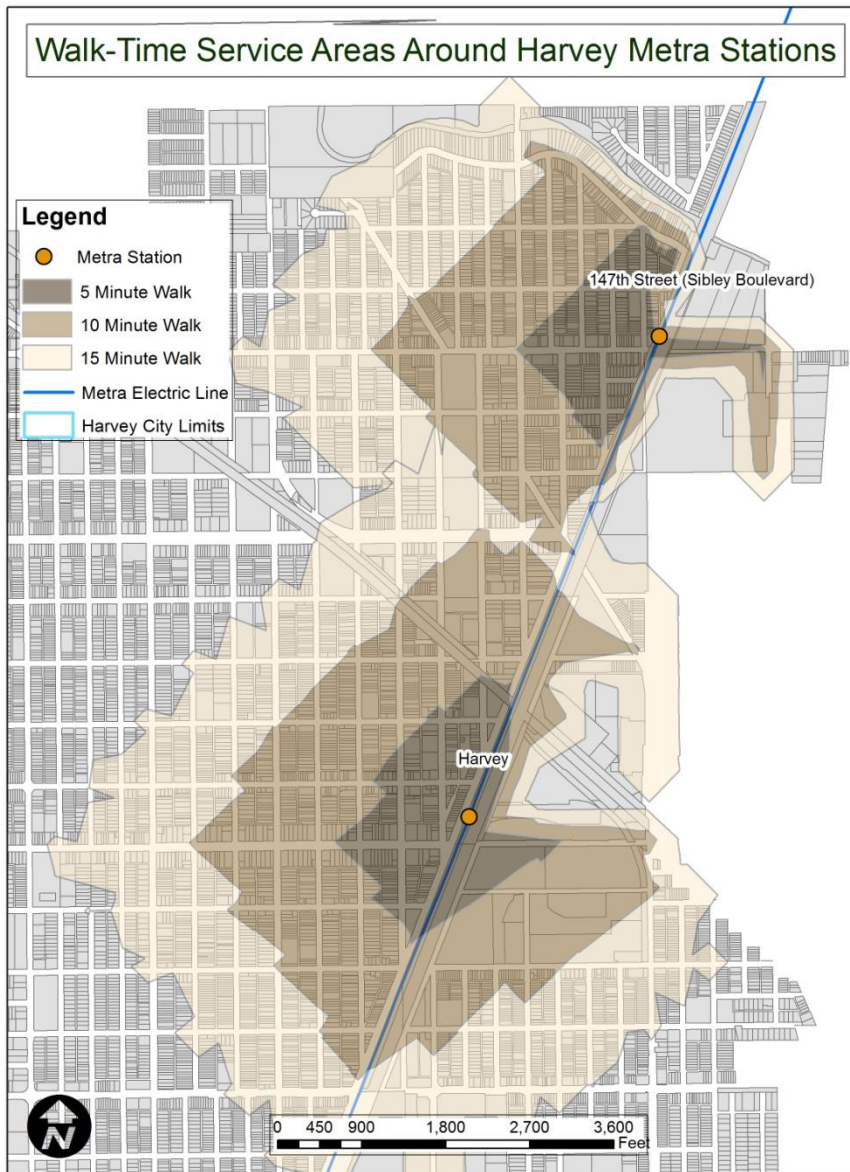


- ▶ **Metra Lines**
- ▶ **Metra Stations**
- ▶ Pace Routes
- ▶ Pace Stops
- ▶ Complete Streets
- ▶ Truck Routes
- ▶ **Traffic Counts**

Park Forest: Emergency Response Times



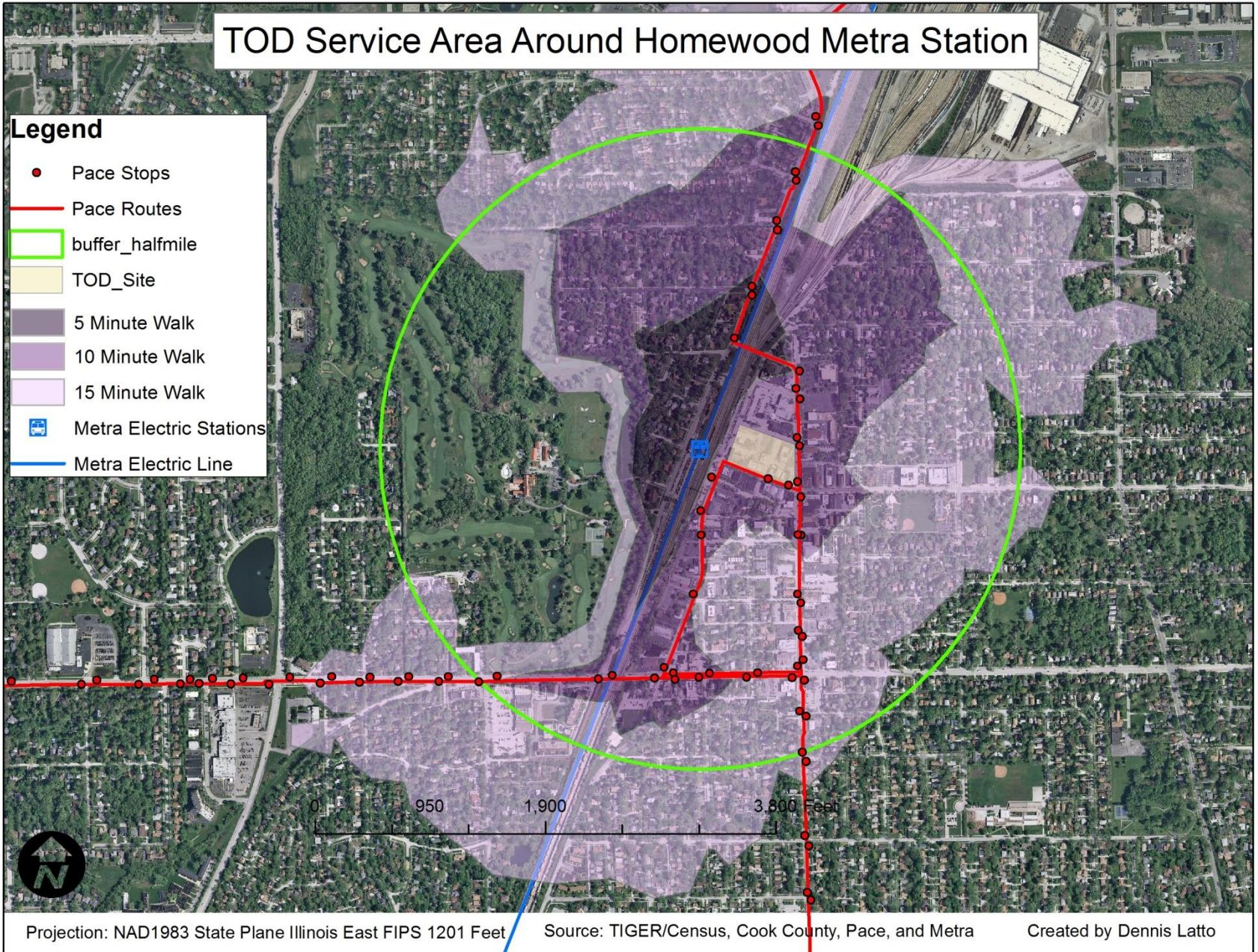
Harvey Service Areas



TOD Service Area Around Homewood Metra Station

Legend

- Pace Stops
- Pace Routes
- buffer_halfmile
- TOD_Site
- 5 Minute Walk
- 10 Minute Walk
- 15 Minute Walk
- Metra Electric Stations
- Metra Electric Line



Conclusion

- ▶ Our goal is provide cost effective GIS services through a **Web Based Mapping Application**
- ▶ We will provide a **public** and **private** portal in order to display information to the public while maintaining sensitive information of you municipality
- ▶ Allow municipalities to **edit** their own information (will provide training)
- ▶ Create a **sustainable** consortium that will maintain and preserve some of your village's most important information such as infrastructure.



Conclusion

- Web Mapping Application should be released by later this month.
- Many municipalities have already joined including: South Chicago Heights, Lemont, Blue Island, South Holland, Olympia Fields, Park Forest, Lansing, and Midlothian, Richton Park, Country Club Hills, and Matteson.
- We can map any file out of AutoCAD or any spreadsheet which has an address field.



Contact Information

- ▶ Thomas Vander Woude – Director of Transportation / SSAtlas
thomas.vanderwoude@ssmma.info
 - ▶ Dennis Latto – Planner / GIS Specialist
dennis.latto@ssmma.info
 - ▶ Jose Alarcon – Senior GIS Analyst
jose.alarcon@ssatlas.org

 - ▶ Alan Hobscheid-Cook County: GIS Manager
alan.hobscheid@cookcountyil.gov

 - ▶ Website:
www.ssatlas.org
-

