

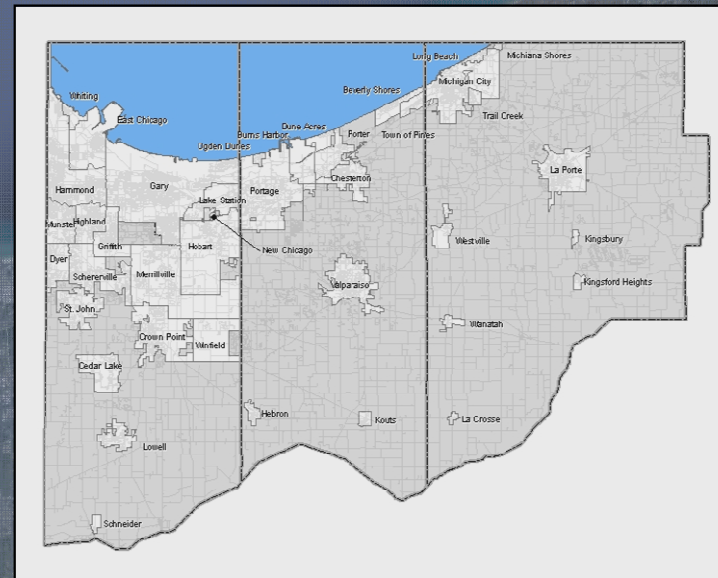
**Creating Tomorrow Today**  
**2040 Comprehensive Regional Plan**  
Gary & Regional Investment Project



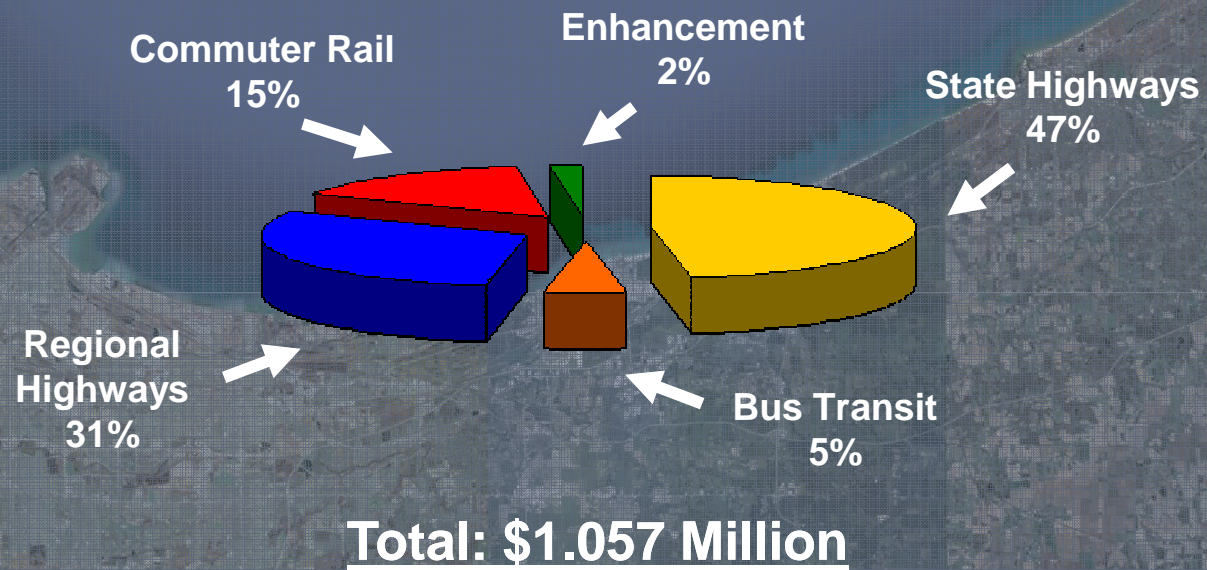
October 27, 2010

## What is NIRPC?

- **Northwestern Indiana Regional Planning Commission**
  - Created in 1965
  - Metropolitan Planning Organization & Council of Governments
- **Serves Lake, La Porte, and Porter Counties**
- **2003 Revised Enabling Legislation:**
  - Expansion of Full Commission Board of Elected Officials into Council of Governments format
  - Established Purpose of Commission to maintain a planning & programming process for:
    - Transportation, Economic Development, Environmental policies



## 2010-2013 Programmed Projects: Federal, State & Local Costs

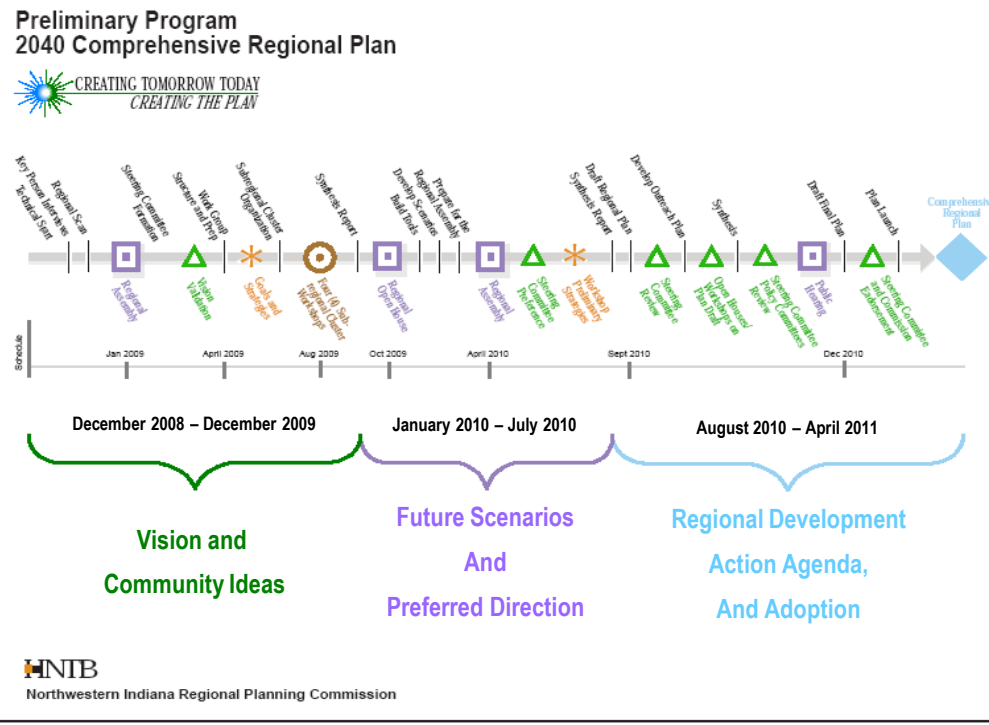




NIRPC 2040  
Comprehensive Regional Plan

- **Develop a Vision and Plan for the Future of Northwest Indiana to the Year 2040**
- **Meet Federal Transportation Planning Requirements**
  - *Expanded planning scope beyond transportation, linking with land use, environment, economic development and social equity*
  - *Unprecedented Public Involvement*

**Slated for Adoption in April 2011**





# Unprecedented Public Involvement

*Regional Forum on the Future of NW IN*

Radisson Hotel, Merrillville

December 6, 2008

**500 person regional visioning meeting identified:**

- Valued places
- Key themes
- Opportunities & challenges
- Vision elements
- Priorities



***“INvision” Northwest Indiana:***

***A vibrant, revitalized, accessible and united region.***

Stretching from the treasured shores of Lake Michigan to the historic banks of the Kankakee River and committed to an ethic of sustainability:

A **vibrant** region – Our economy is thriving, our people are well educated, and our environment is clean;

A **revitalized** region – Growth is planned, urban areas are renewed, and natural and rural areas are valued and protected

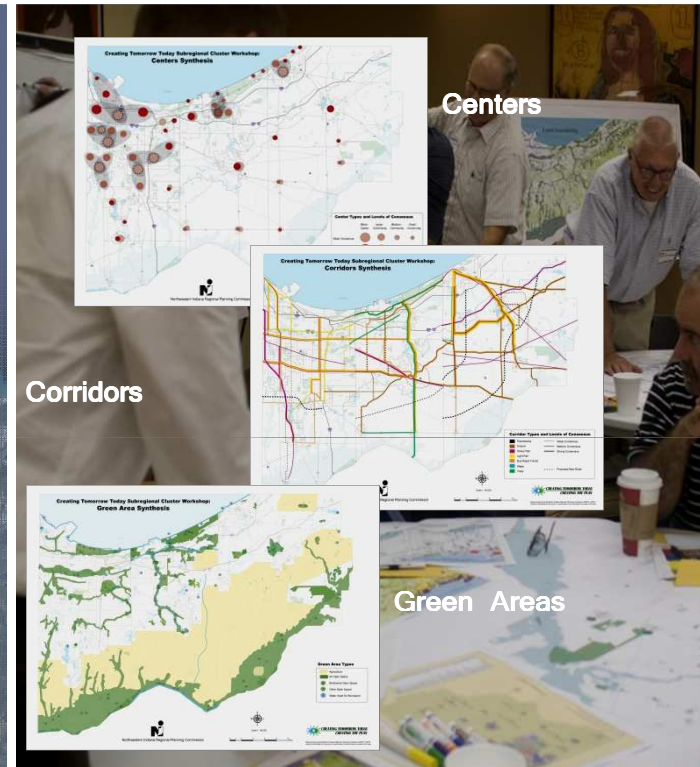
An **accessible** region – Our people are connected to each other and to equal opportunities for working, playing, living, and learning;

A **united** region – Celebrating our diversity, we work together as a community across racial, ethnic, political, and cultural lines for the good of the region.



## How The Plan Will Be Used

- Evaluation and selection of \$45 million in projects annually
  - Local Highways, Commuter Rail, Bus, Pedestrian and Bicycle Trails, Air Quality
- Determine policy & legislative priorities
- Develop, coordinate and implement regional strategies for:
  - Economic Development
  - Environmental Management
  - Land Use





### ***Goal Themes:***

- **Maintaining the distinction between urban and rural areas**
- **Multimodal transport - reduce highway dependence - more sustainable transportation Infrastructure**
- **Urban infill development and regeneration**
- **Economic progress and job and wage development**



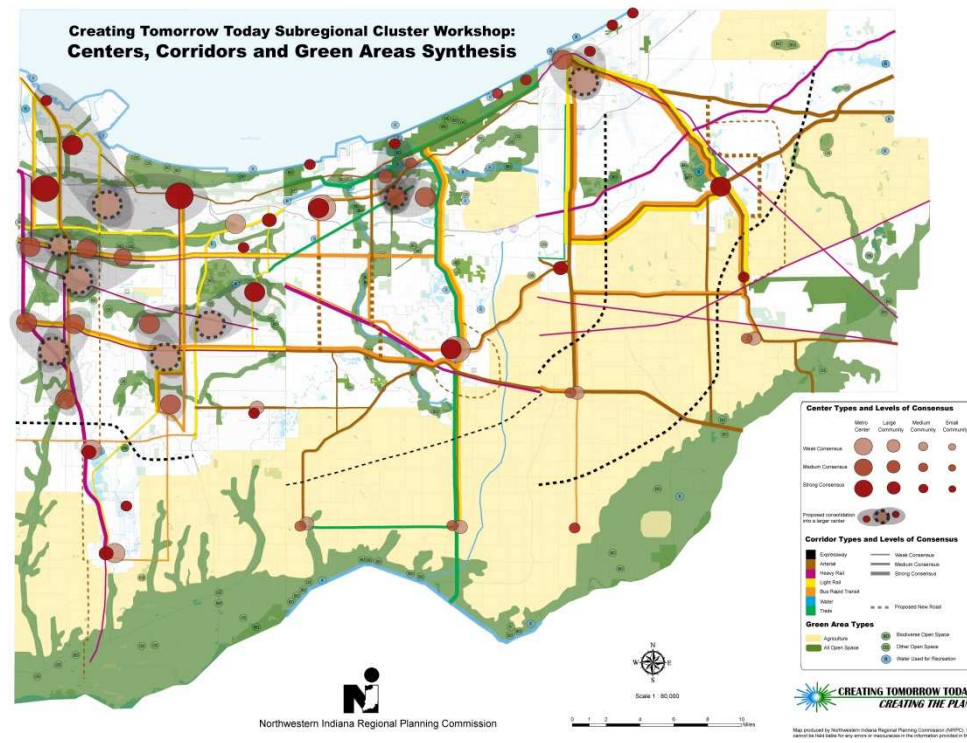
***Goal Themes Continued:***

- Working towards a stronger jobs-housing balance
- “Green” and sustainable approaches
- Developing affordable housing – broader range of types – preventing displacement
- Environmental protection and conservation of resources
- Environmental Justice

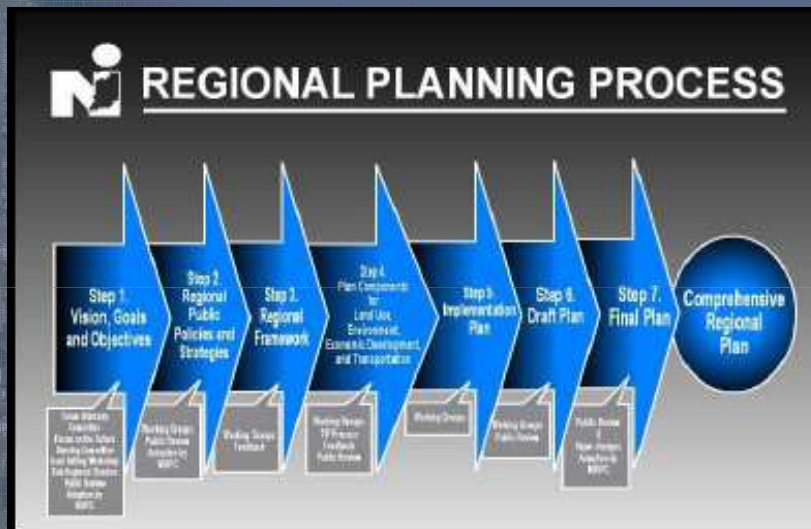




# Composite Map: Centers, Corridors & Green Areas



## Where are We in the Process?

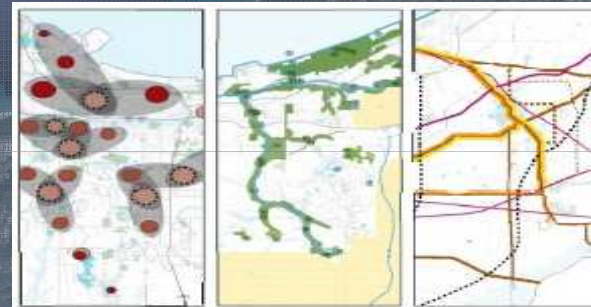


- Our Vision
- Goals and Objectives
- Cluster Workshops
- Scenario Development
- Steering Committee Review
- Public Workshops
- **Finalize Framework**
- Commission Endorsement
- Final Plan for Implementation



# Scenarios Framework

- A View to 2040 – A Framework – Not Yet a Plan
- “Disconnected” from the official forecast process
- Two static scenarios
- Two interactive scenarios
- Tools:
  - CommunityViz
  - NIRPC Travel Demand Forecast Model



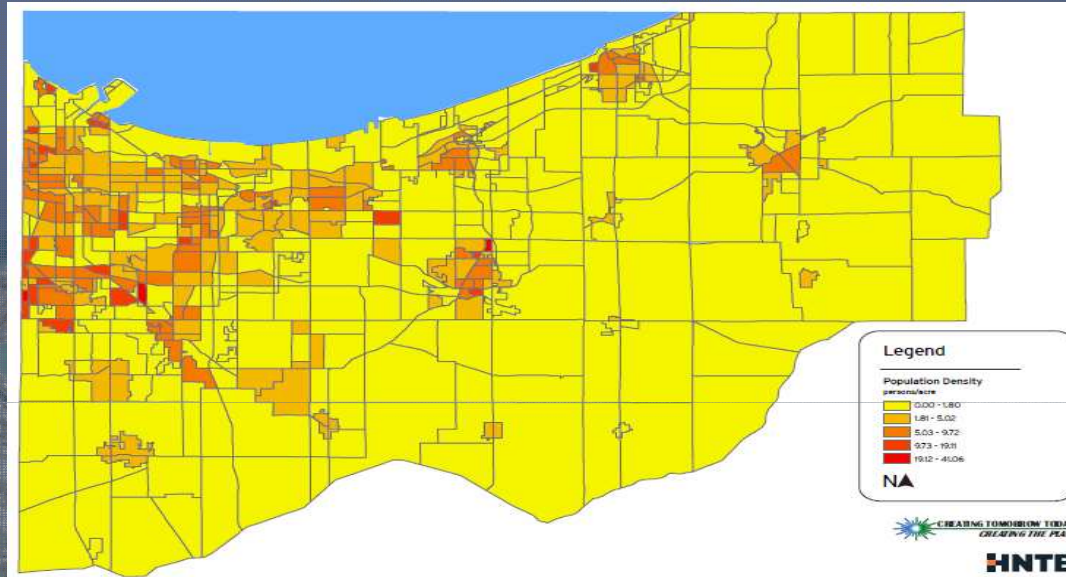
## 4 Scenarios

- Regional Trends to 2040
- Current Community Plans

### Mosaic

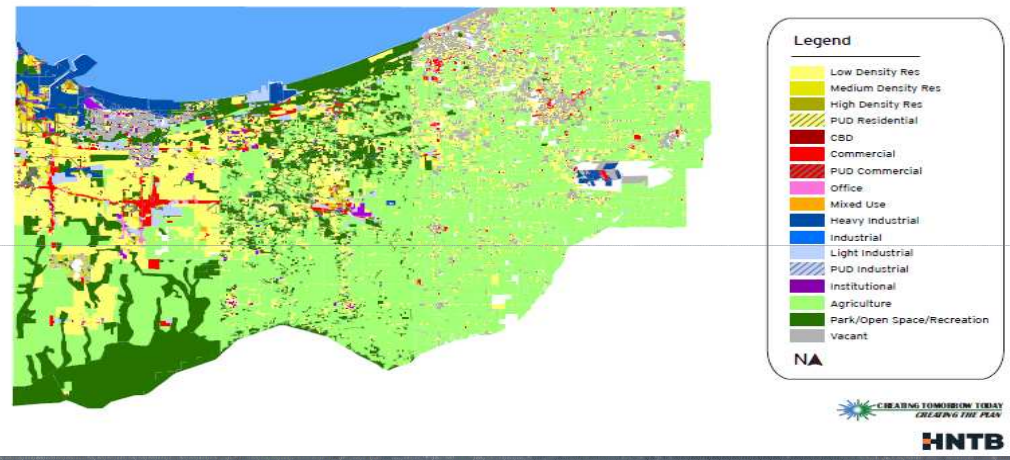
- Livable, Sustainable Centers
- Infill and Revitalization





# Trends – 2040 - Population

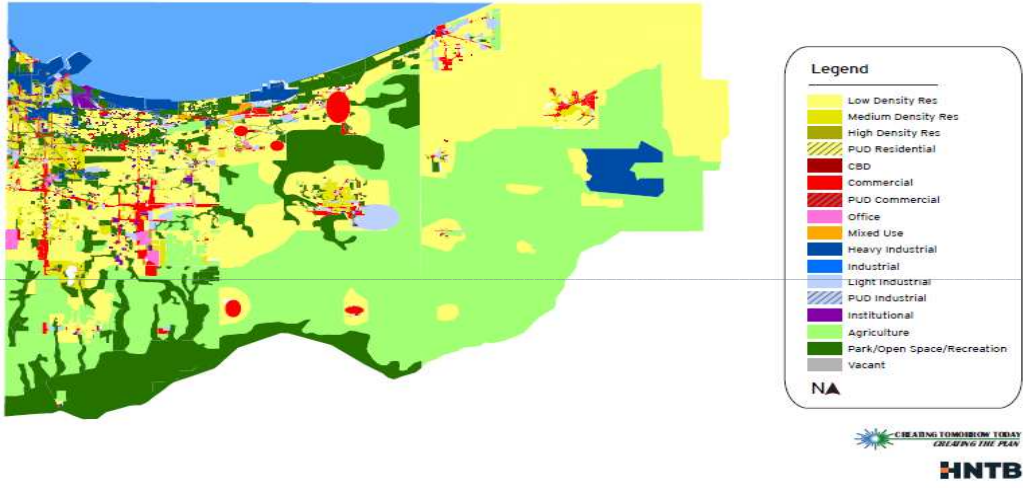
### Plans Scenario: 2010 Land Use



## Plans – Existing Land Use

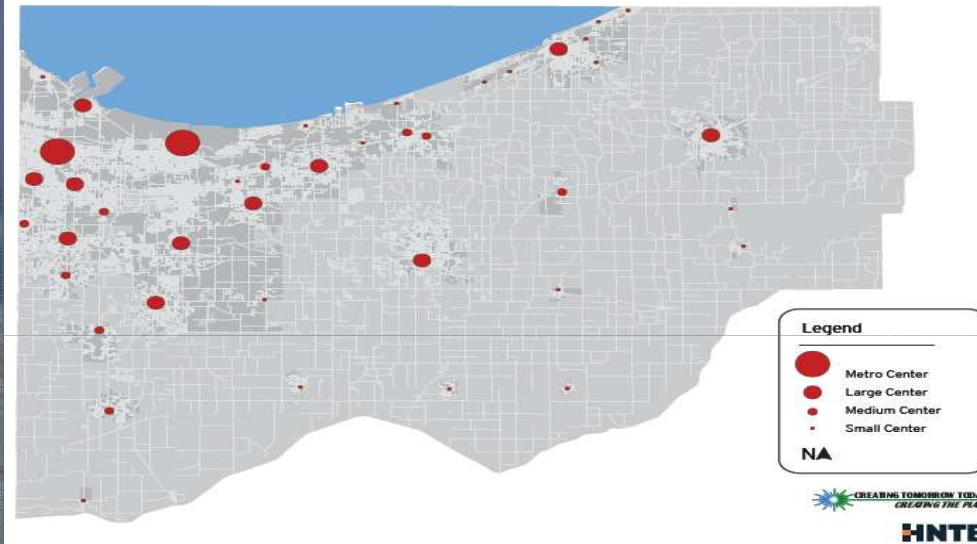


### Plans Scenario: 2040 Land Use



## Plans - Future Land Use

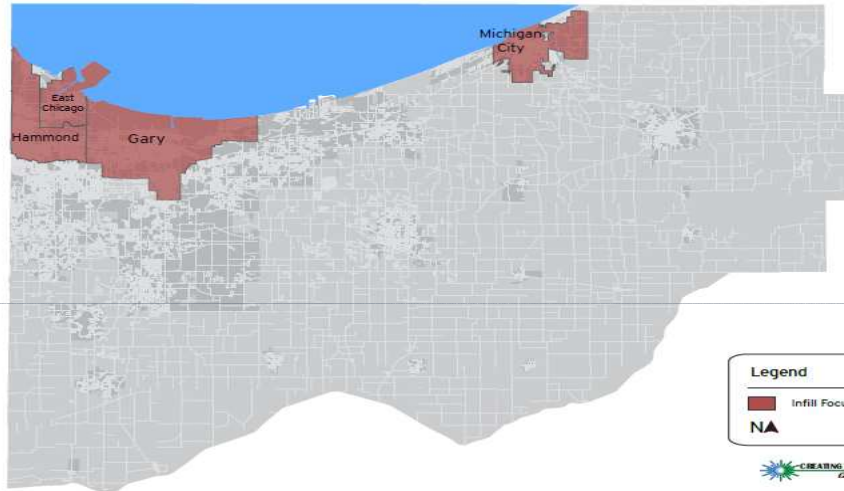
## Livable Centers Scenario: Center Types



# Livable, Sustainable Centers



### Infill Scenario: Infill Focus Areas



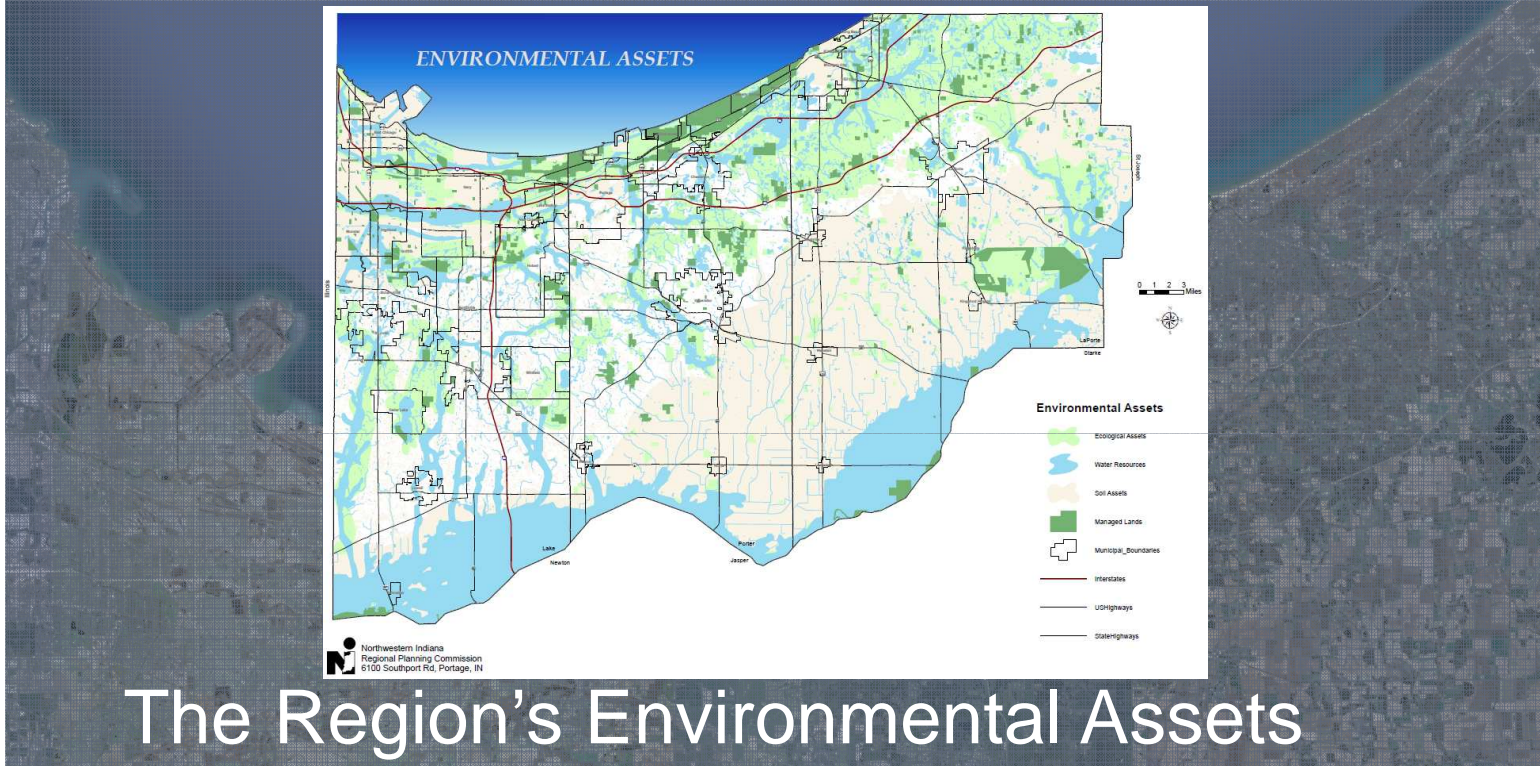
Legend

- Infill Focus Areas
- NA

CREATING TOMORROW TODAY  
2040 Comprehensive Regional Plan

**HNTB**

# Infill and Revitalization of Urban Core

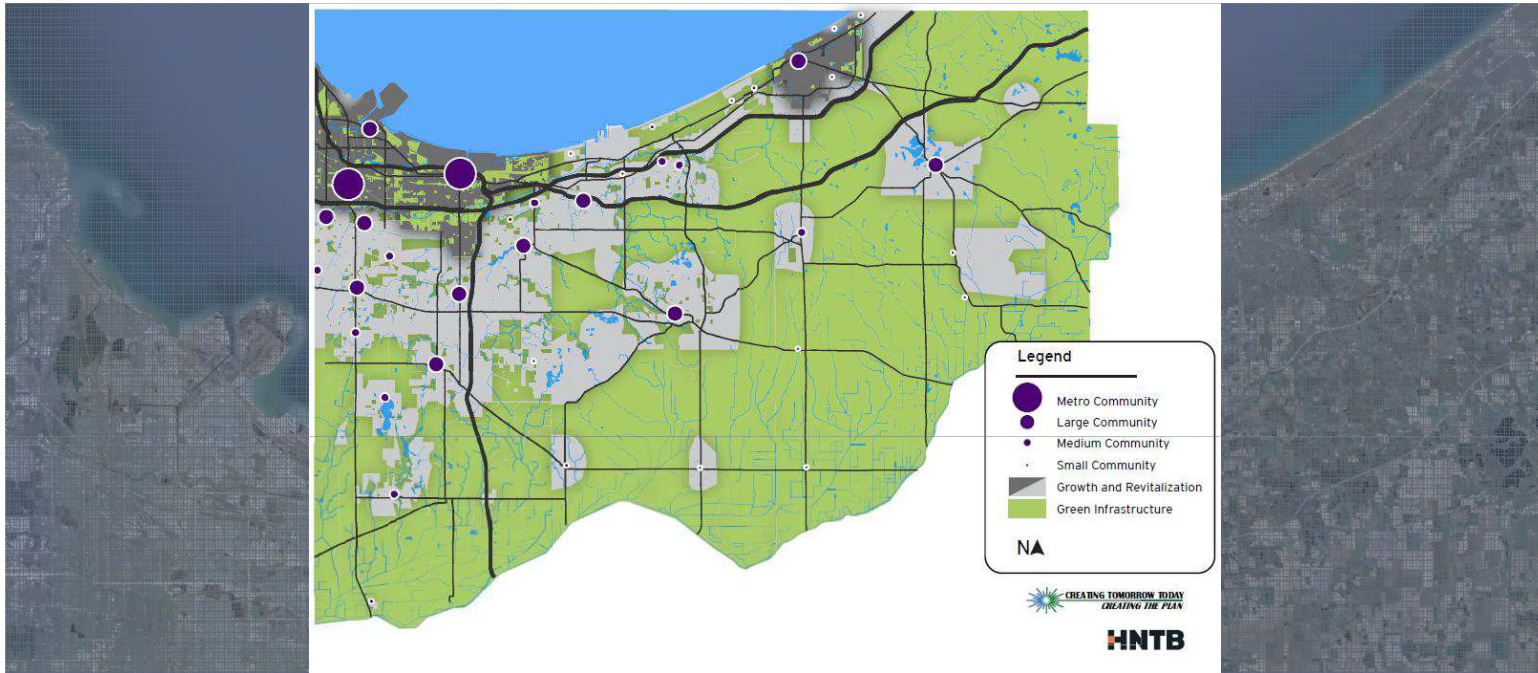


# The Region's Environmental Assets

Creating Tomorrow Today - 2040 Comprehensive Regional Plan - NIRPC







## -2040 Growth and Revitalization Vision Preferred Scenario





## Next Steps

- NIRPC Board Preferred Scenario Action— 10/28/10
- Identification of Implementation Policies, Strategies and Projects
- Financial Plan
- Continuing Community Engagement – workshops, open houses,  
regional assembly
- Draft Plan
- Plan Adoption – April 2011



***“INvision” Northwest Indiana:***

***A vibrant, revitalized, accessible and united region.***

Stretching from the treasured shores of Lake Michigan to the historic banks of the Kankakee River and committed to an ethic of sustainability:

A **vibrant** region – Our economy is thriving, our people are well educated, and our environment is clean;

A **revitalized** region – Growth is planned, urban areas are renewed, and natural and rural areas are valued and protected

An **accessible** region – Our people are connected to each other and to equal opportunities for working, playing, living, and learning;

A **united** region – Celebrating our diversity, we work together as a community across racial, ethnic, political, and cultural lines for the good of the region.

***Thank you***

***More information at [www.nirpc.org](http://www.nirpc.org)***

Northwestern Indiana  
Regional Planning Commission  
6100 Southport Road  
Portage, Indiana 46368  
(219) 763-6060



October 27, 2010

Creating Tomorrow Today - 2040 Comprehensive Regional Plan - NIRPC

