

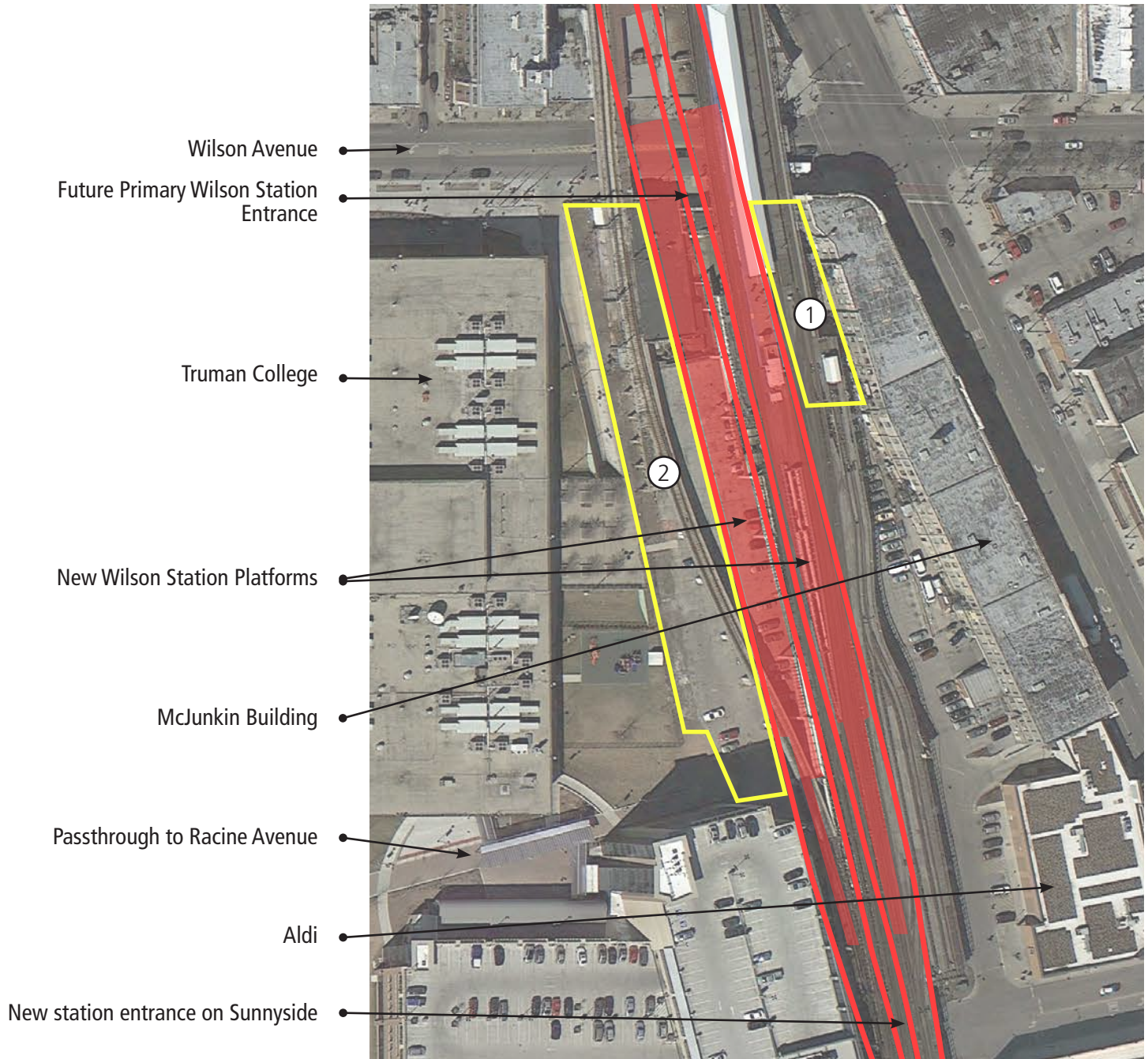
Wilson Station sites

① Lot east of realigned tracks

- 5,520 square feet.
- 30 feet of street frontage.
- Zoned B1-5 and C2-3, which allows for mix of business and commercial uses.
- In Wilson Yard TIF.
- Currently owned by CTA.

② Lot west of realigned tracks

- 32,590 square feet.
- 60 feet of street frontage.
- Zoned B1-5, C2-3 and PD, which allow for mix of business and commercial uses.
- In Wilson Yard TIF.
- Currently owned by CTA and City Colleges.



Wilson Station

Wilson Station, completed in 1923, is one of the Chicago Transit Authority's (CTA) most popular stations, serving an average of about 6,000 daily boardings on 510 trains. The use of Wilson Station has grown, too; over the past 15 years, daily ridership at the station has increased by almost 40 percent.

The station's structure, along with that of the entire North Side Red and Purple Lines, has deteriorated over the years, and the CTA has committed to the reconstruction of the entire line north of Belmont. The Wilson Station renovation is the first element of that process and will include the realignment of the tracks, the creation of a new station headhouse, the construction of a new

entrance at Sunnyside Avenue and the renovation of the Gerber Building. When the \$203 million project is completed in 2017, riders at Wilson will be able to board both Red and Purple Line trains.

CTA's development constraints

- Areas under the track are height restricted.
- Access to track structure and columns must be maintained.
- Buildings cannot be attached to track structure.
- Development must either have a 10 foot setback from the tracks, or access must be maintained on one side of tracks.

Wilson Station renovation plan



Renderings of Wilson Station renovation



Platform view. Cross-platform Red/Purple Line transfers.



Primary station entrance, south side of Wilson Avenue.



South side of Wilson Avenue.



Gerber Building and north side of Wilson Avenue.

Source: Chicago Transit Authority